

[54] **TENT STRUCTURE**

[76] Inventor: **Tony M. L. Tsai**, Rm. 3, 4th Floor, No. 8, Fu Ching Street, Taipei City, Taiwan

[21] Appl. No.: **611,511**

[22] Filed: **Mar. 7, 1996**

[51] Int. Cl.⁶ **E04H 15/50**

[52] U.S. Cl. **135/145; 135/151; 135/155; 135/909**

[58] **Field of Search** 135/143, 144, 135/145, 146, 147, 153, 909, 155, 158, 159, 160, 140-142, 139, 131, 130, 135, 136

[56] **References Cited**

U.S. PATENT DOCUMENTS

3,826,270	7/1974	Hentges	135/153 X
3,874,398	4/1975	Hendrickson	135/144
4,066,089	1/1978	Rainwater	135/143 X
4,077,418	3/1978	Cohen	135/143 X
4,365,908	12/1982	Thiboutot	135/143 X
4,779,635	10/1988	Lynch	135/97
5,133,378	7/1992	Tanasychuk	135/153 X
5,511,572	4/1996	Carter	135/145

FOREIGN PATENT DOCUMENTS

0691531	5/1953	United Kingdom	135/146
---------	--------	----------------	-------	---------

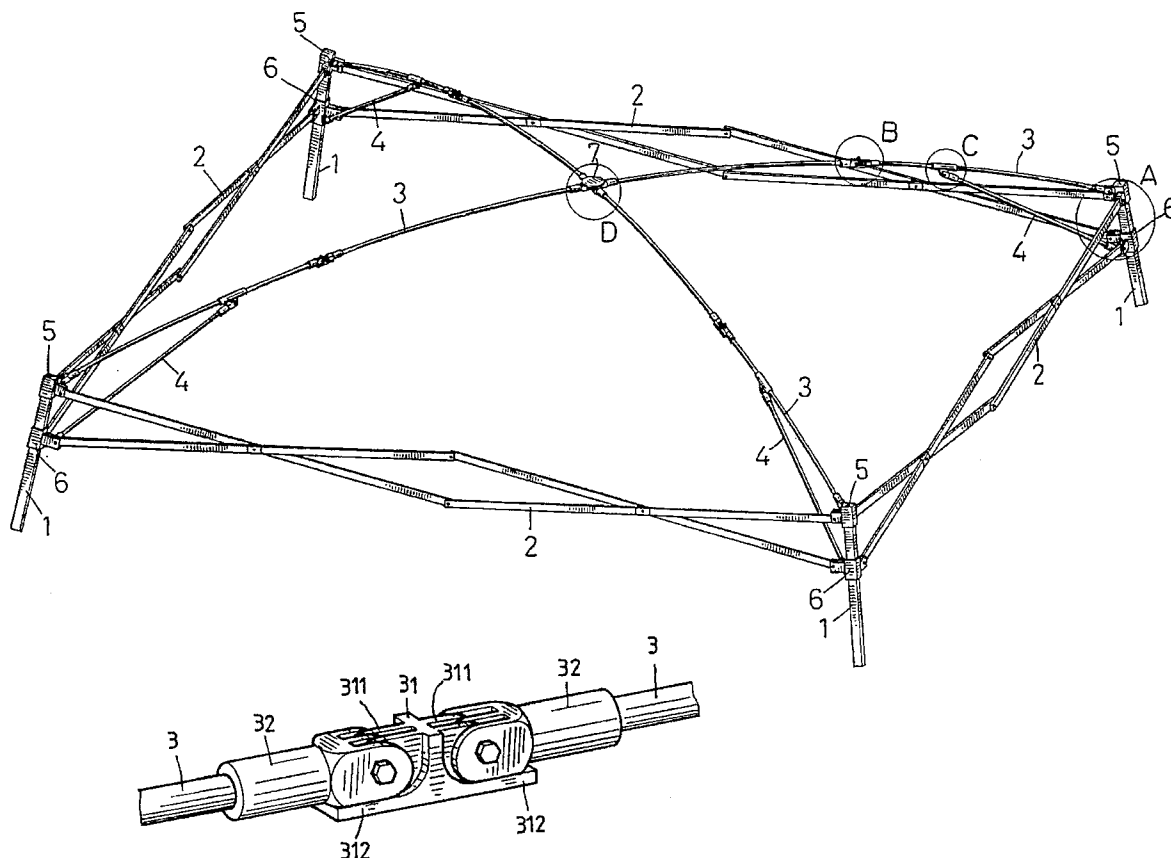
Primary Examiner—Lanna Mai

Attorney, Agent, or Firm—Morton J. Rosenberg; David I. Klein

[57] **ABSTRACT**

A tent structure includes four poles interconnected by four scissors-type linkages forming a square structure and four intermediate pivot connecting members. Each pole comprises a fixed connector and a sliding connector. Each of the fixed connector and the sliding connector has three connecting seats with two connecting seats at respective outer sides adapted to receive and end of the scissors-type linkage and with one connecting seat positioned inbetween the two outer seats adapted to receive an end of a rod member. Each intermediate pivot connecting member has a board and a pair of pivoting member integrally formed on top portion of the board and are adapted as an interconnecting member between the poles and a head connector. Each intermediate pivot connecting member confines the rod members to rotate upwardly only thus the tent is erected when the intermediate pivot connecting members are lifted to the upmost position and the tent is collapsed when the intermediate pivot connecting members are urged downwardly.

2 Claims, 12 Drawing Sheets



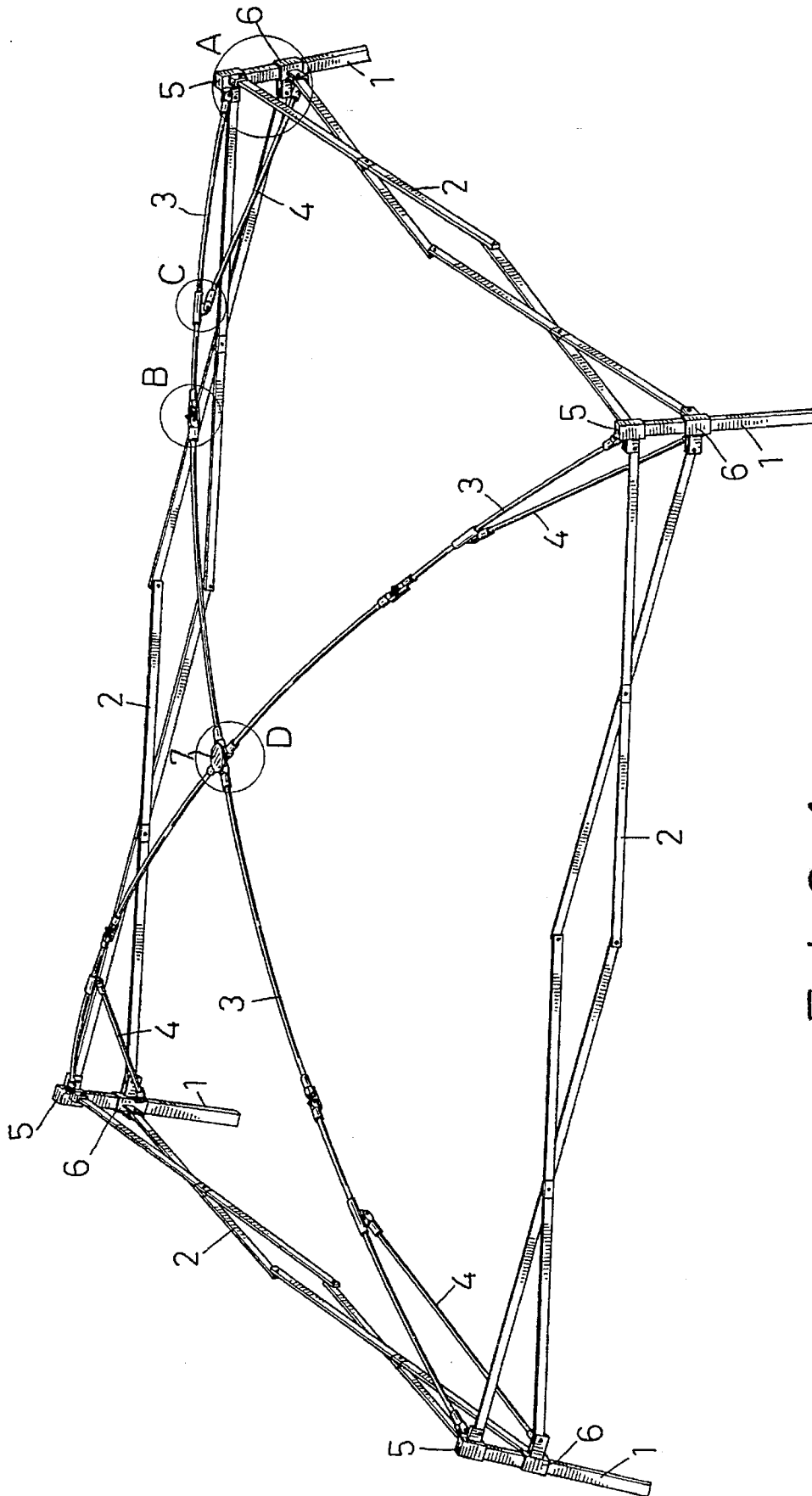


FIG. 1

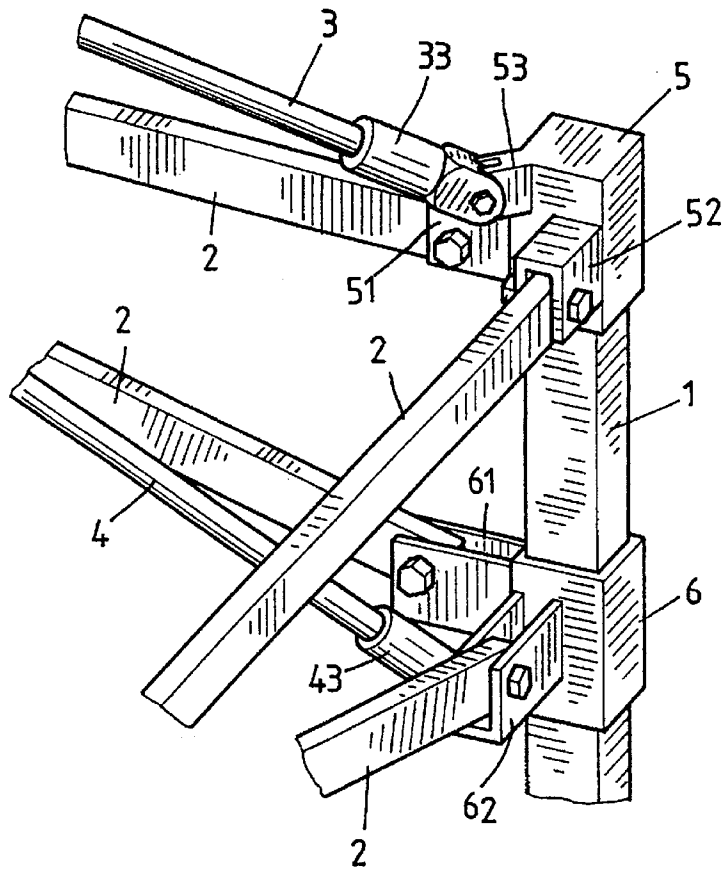


FIG. 2

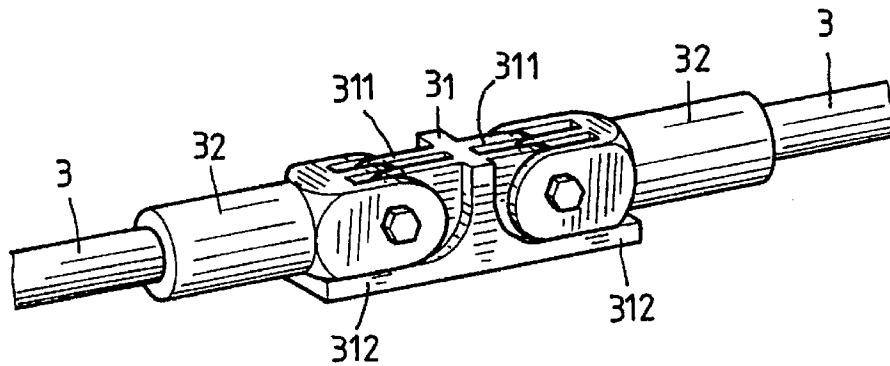


FIG. 3

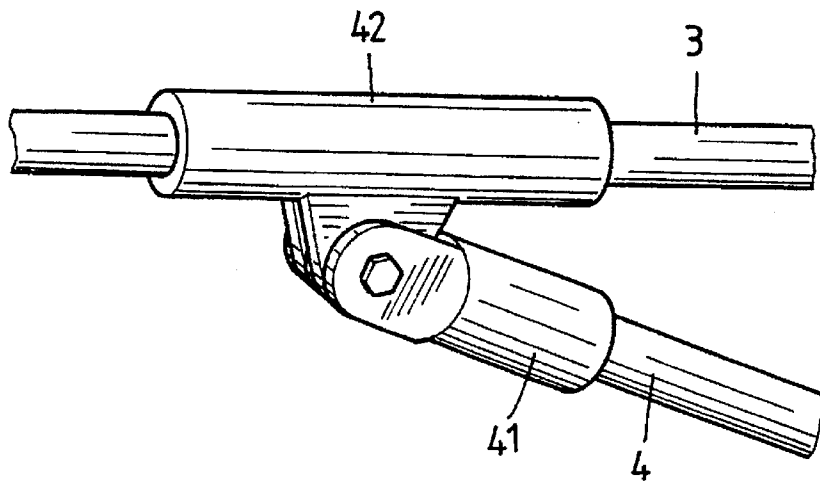


FIG. 4

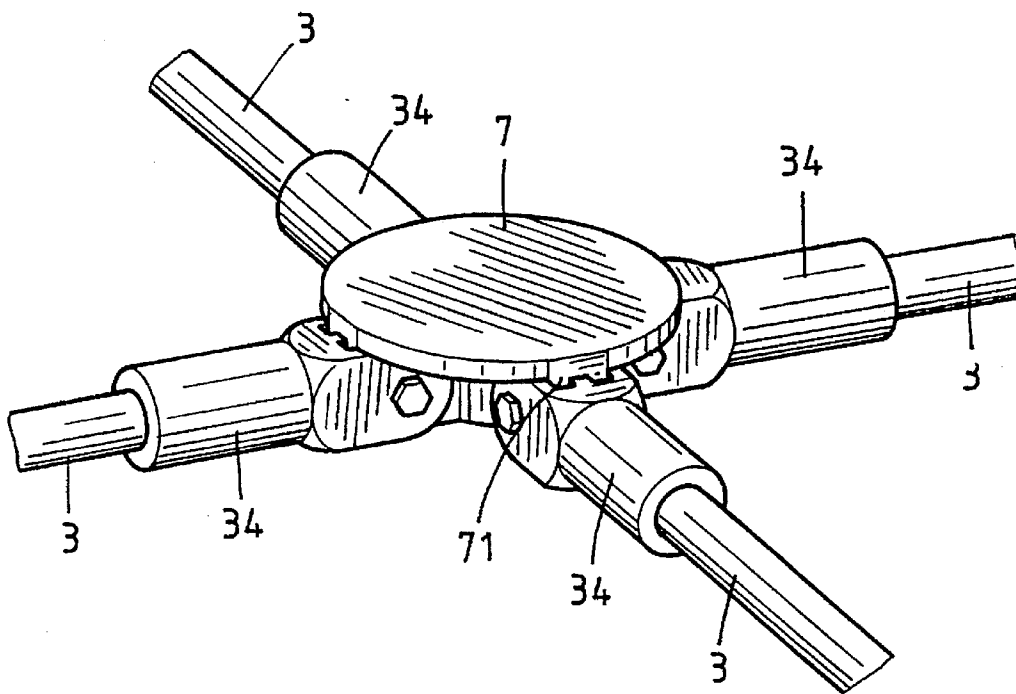


FIG. 5

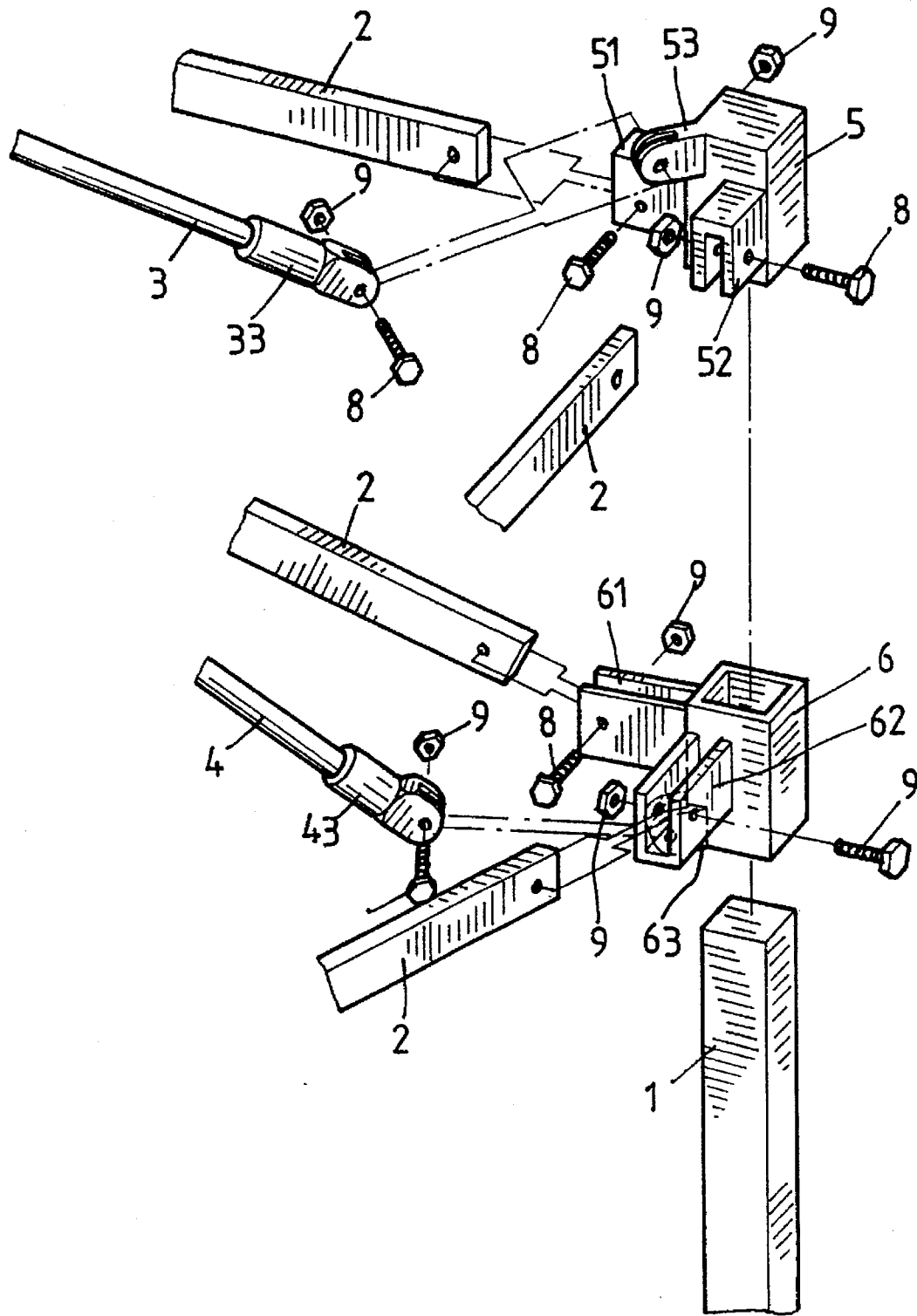


FIG. 6

Explore Litigation Insights

Docket Alarm provides insights to develop a more informed litigation strategy and the peace of mind of knowing you're on top of things.

Real-Time Litigation Alerts



Keep your litigation team up-to-date with **real-time alerts** and advanced team management tools built for the enterprise, all while greatly reducing PACER spend.

Our comprehensive service means we can handle Federal, State, and Administrative courts across the country.

Advanced Docket Research



With over 230 million records, Docket Alarm's cloud-native docket research platform finds what other services can't. Coverage includes Federal, State, plus PTAB, TTAB, ITC and NLRB decisions, all in one place.

Identify arguments that have been successful in the past with full text, pinpoint searching. Link to case law cited within any court document via Fastcase.

Analytics At Your Fingertips



Learn what happened the last time a particular judge, opposing counsel or company faced cases similar to yours.

Advanced out-of-the-box PTAB and TTAB analytics are always at your fingertips.

API

Docket Alarm offers a powerful API (application programming interface) to developers that want to integrate case filings into their apps.

LAW FIRMS

Build custom dashboards for your attorneys and clients with live data direct from the court.

Automate many repetitive legal tasks like conflict checks, document management, and marketing.

FINANCIAL INSTITUTIONS

Litigation and bankruptcy checks for companies and debtors.

E-DISCOVERY AND LEGAL VENDORS

Sync your system to PACER to automate legal marketing.