



US006137802A

United States Patent [19]

[11] Patent Number: **6,137,802**

Jones et al.

[45] Date of Patent: ***Oct. 24, 2000**

[54] **AUTOMATIC MEDIA SWITCHING APPARATUS AND METHOD**

5,748,619	5/1998	Meier	370/466
5,790,536	8/1998	Mahany et al.	370/338
5,844,893	12/1998	Gollnick et al.	370/338
5,915,002	6/1999	Shimosako	379/93.07

[75] Inventors: **Wesley Stuart Jones**, Schaumburg;
Louis P. Dellaverson, Barrington, both of Ill.

Primary Examiner—Chi H. Pham
Assistant Examiner—Frank Duong
Attorney, Agent, or Firm—Charles W. Bethards

[73] Assignee: **Motorola, Inc.**, Schaumburg, Ill.

[*] Notice: This patent issued on a continued prosecution application filed under 37 CFR 1.53(d), and is subject to the twenty year patent term provisions of 35 U.S.C. 154(a)(2).

[57] **ABSTRACT**

A media switching apparatus automatically switches a user device between wired and wireless service mediums of communications networks. The switching apparatus includes a protocol stack having a network layer, a logical link control, a first set of lower layers specific to a wired service medium and a second set of lower layers specific to a wireless service medium. A selector is responsive to the availability of a wired service medium for selecting the first set of lower layers and is further responsive to the non-availability of a wired service medium and the availability of a wireless service medium for selecting the second set of lower layers.

[21] Appl. No.: **08/827,014**

[22] Filed: **Mar. 25, 1997**

[51] Int. Cl.⁷ **H04M 11/00**

[52] U.S. Cl. **370/401; 370/445; 370/463**

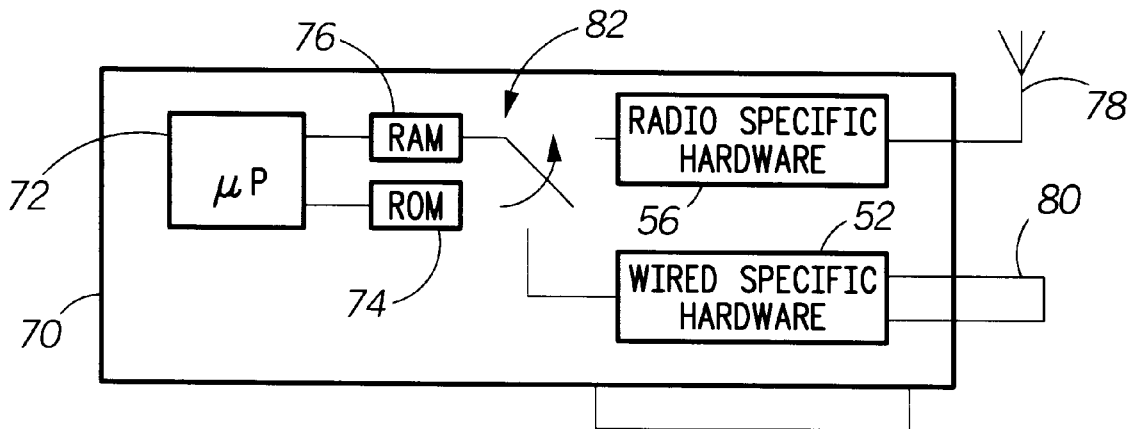
[58] Field of Search 370/401, 402, 370/522, 463, 445, 338; 455/556, 557

[56] **References Cited**

U.S. PATENT DOCUMENTS

5,726,984 3/1998 Kubler et al. 370/338

24 Claims, 6 Drawing Sheets



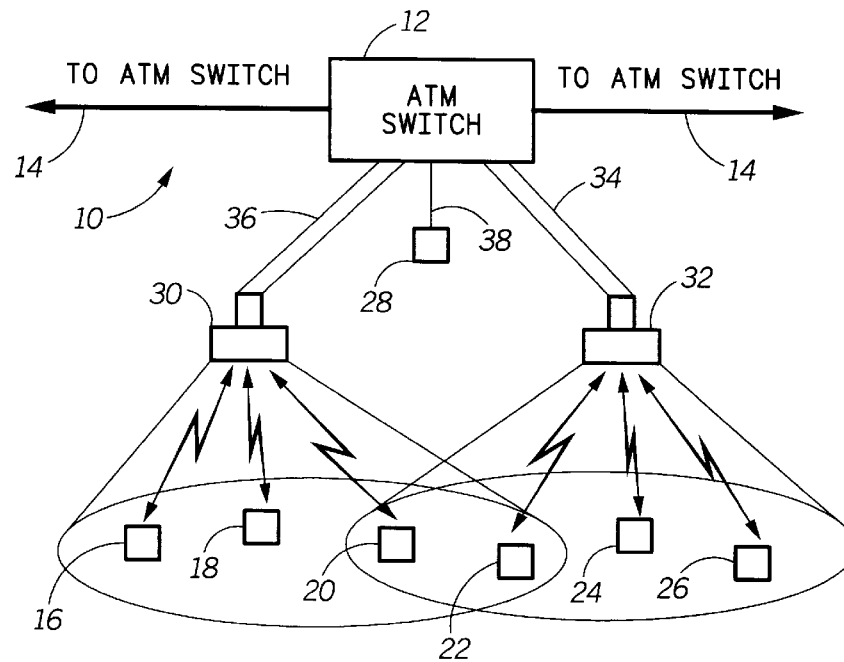


FIG. 1

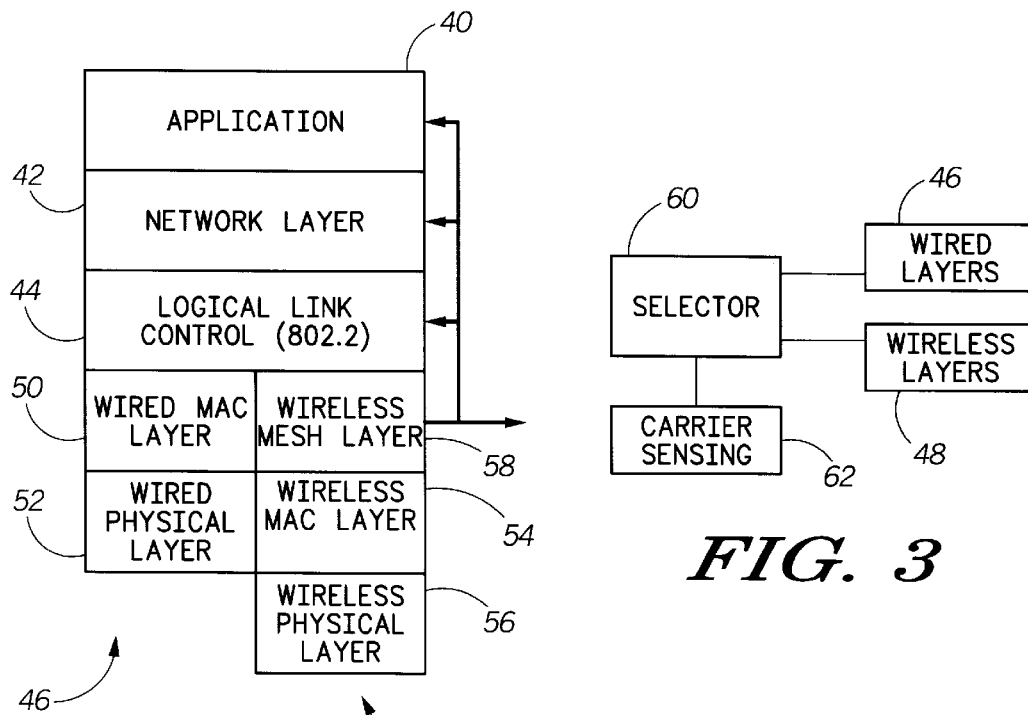


FIG. 2

FIG. 3

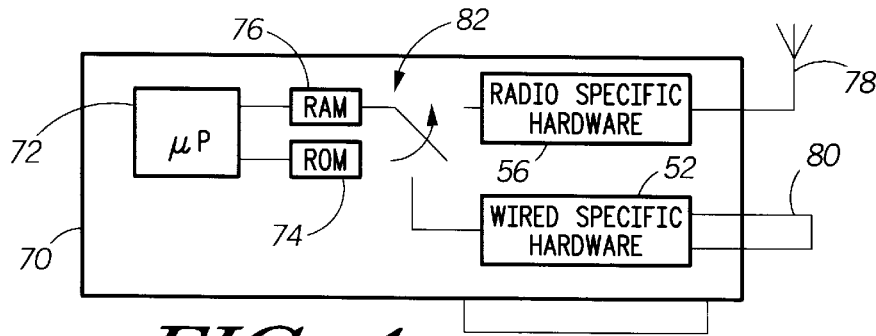


FIG. 4

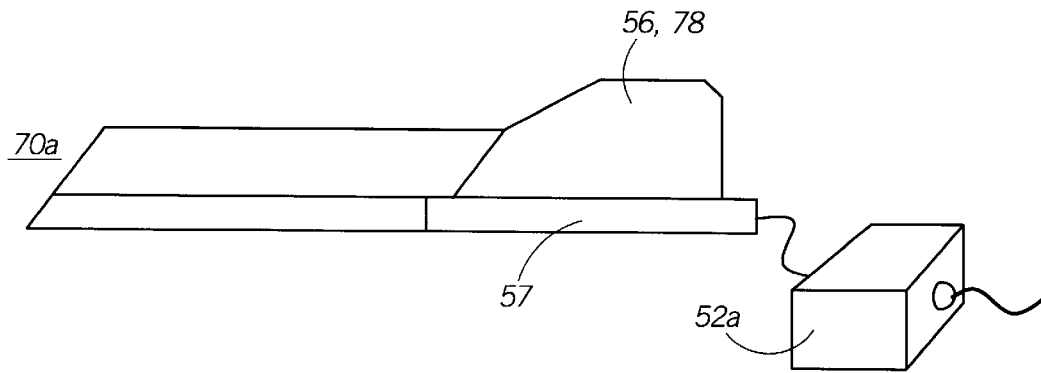


FIG. 5

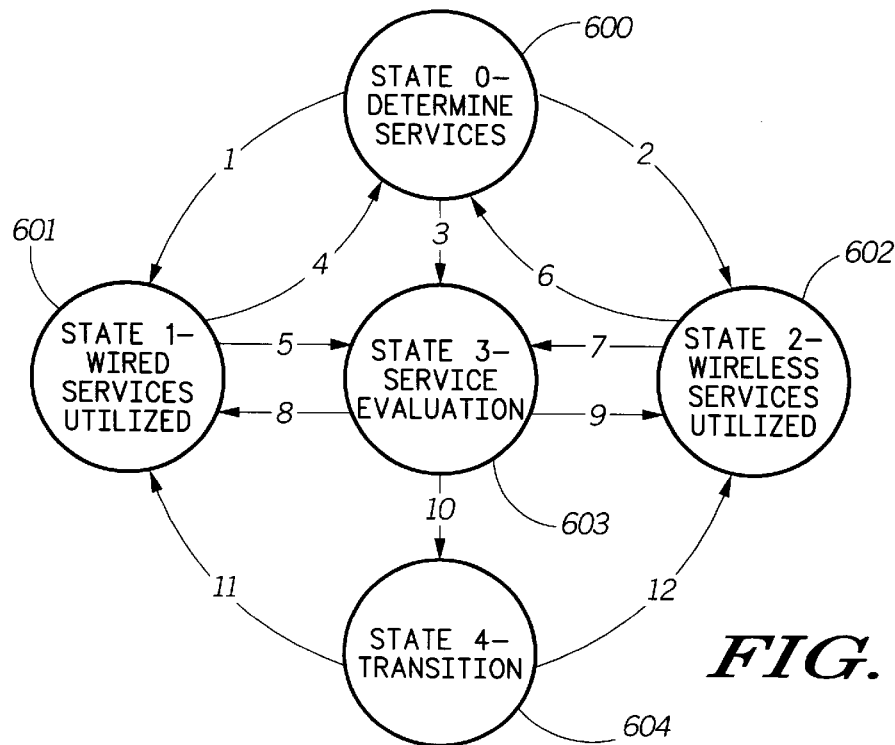


FIG. 6

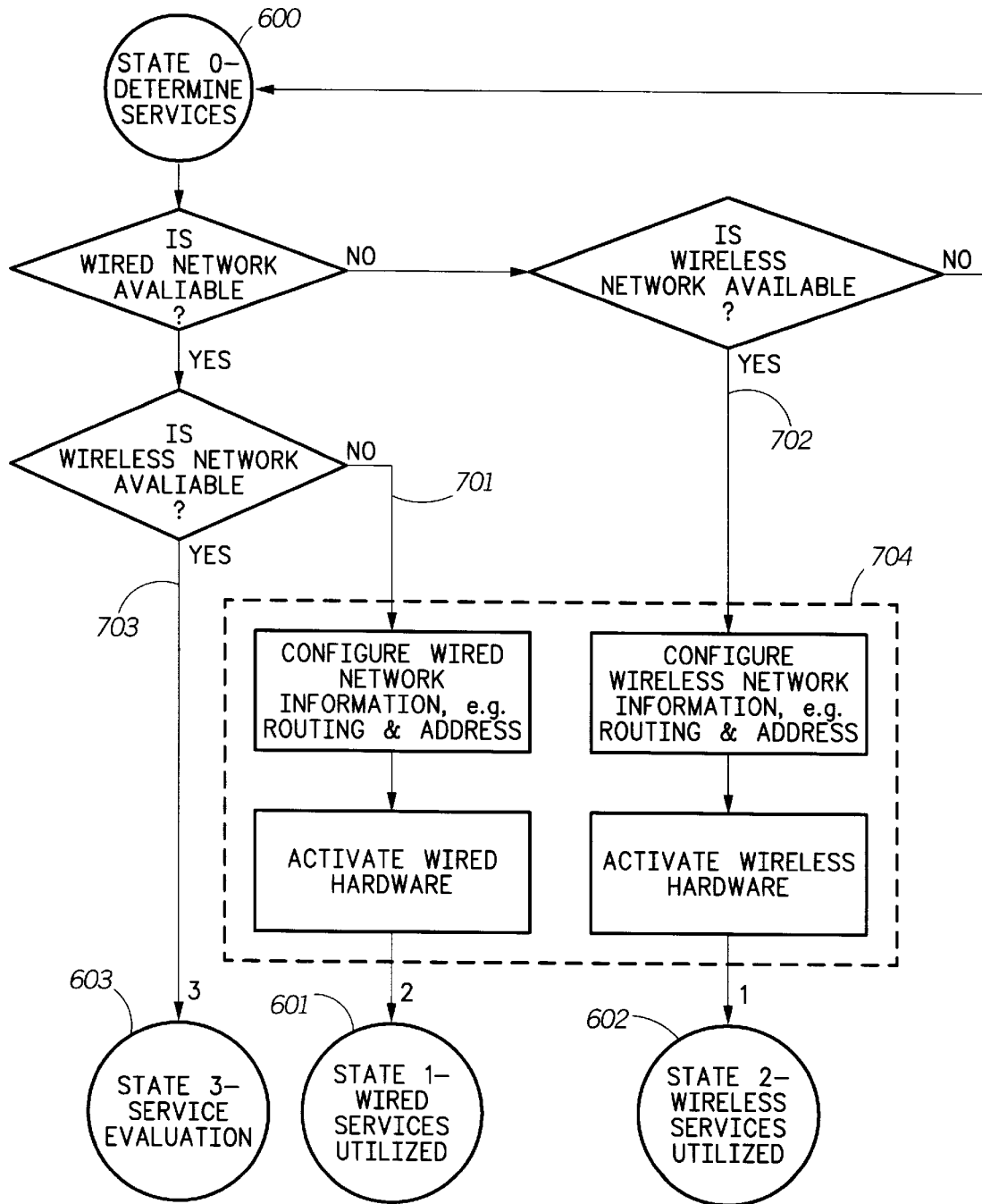


FIG. 7

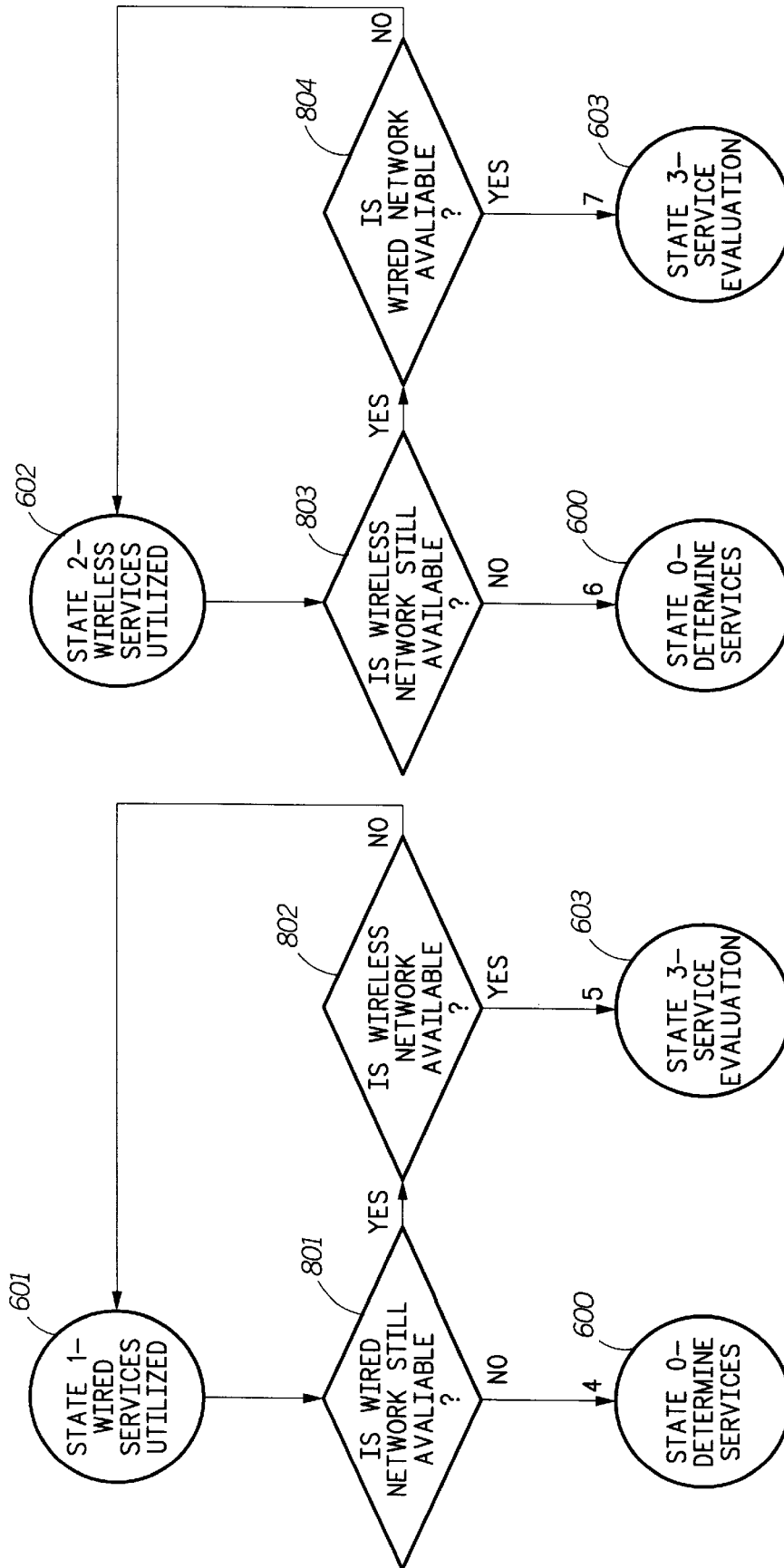


FIG. 8

Explore Litigation Insights

Docket Alarm provides insights to develop a more informed litigation strategy and the peace of mind of knowing you're on top of things.

Real-Time Litigation Alerts



Keep your litigation team up-to-date with **real-time alerts** and advanced team management tools built for the enterprise, all while greatly reducing PACER spend.

Our comprehensive service means we can handle Federal, State, and Administrative courts across the country.

Advanced Docket Research



With over 230 million records, Docket Alarm's cloud-native docket research platform finds what other services can't. Coverage includes Federal, State, plus PTAB, TTAB, ITC and NLRB decisions, all in one place.

Identify arguments that have been successful in the past with full text, pinpoint searching. Link to case law cited within any court document via Fastcase.

Analytics At Your Fingertips



Learn what happened the last time a particular judge, opposing counsel or company faced cases similar to yours.

Advanced out-of-the-box PTAB and TTAB analytics are always at your fingertips.

API

Docket Alarm offers a powerful API (application programming interface) to developers that want to integrate case filings into their apps.

LAW FIRMS

Build custom dashboards for your attorneys and clients with live data direct from the court.

Automate many repetitive legal tasks like conflict checks, document management, and marketing.

FINANCIAL INSTITUTIONS

Litigation and bankruptcy checks for companies and debtors.

E-DISCOVERY AND LEGAL VENDORS

Sync your system to PACER to automate legal marketing.