



US007861262B1

(12) **United States Patent**
Gutman

(10) **Patent No.:** **US 7,861,262 B1**
(45) **Date of Patent:** **Dec. 28, 2010**

(54) **METHOD AND SYSTEM FOR CONTROLLING A PERSONALIZED VIDEO RECORDER WITH A SET-TOP BOX**

(75) Inventor: **James C. Gutman**, Littleton, CO (US)

(73) Assignee: **Enreach Technology, Inc.**, San Jose, CA (US)

(*) Notice: Subject to any disclaimer, the term of this patent is extended or adjusted under 35 U.S.C. 154(b) by 1106 days.

(21) Appl. No.: **09/948,445**

(22) Filed: **Sep. 7, 2001**

(51) **Int. Cl.**

- G06F 3/00** (2006.01)
- G06F 13/00** (2006.01)
- H04N 5/445** (2006.01)
- H04N 9/00** (2006.01)
- H04N 11/00** (2006.01)
- H04N 5/91** (2006.01)
- H04N 7/00** (2006.01)

(52) **U.S. Cl.** **725/37; 725/58; 386/1; 386/46**

(58) **Field of Classification Search** **725/80, 725/141, 147**

See application file for complete search history.

(56) **References Cited**

U.S. PATENT DOCUMENTS

5,003,384	A *	3/1991	Durden et al.	725/104
5,844,623	A *	12/1998	Iwamura	725/70
6,108,516	A *	8/2000	Kuether	725/61
6,137,539	A *	10/2000	Lownes et al.	348/569
6,298,482	B1 *	10/2001	Seidman et al.	725/101
6,442,328	B1 *	8/2002	Elliott et al.	386/46
6,483,986	B1 *	11/2002	Krapf	386/68
6,532,589	B1 *	3/2003	Proehl et al.	725/40
6,968,364	B1 *	11/2005	Wong et al.	709/217

7,003,213	B1 *	2/2006	Hasegawa	386/83
7,206,497	B1 *	4/2007	Boyle et al.	386/83
2001/0003177	A1 *	6/2001	Schena et al.	705/27
2002/0009285	A1 *	1/2002	Safadi et al.	386/46
2002/0046403	A1 *	4/2002	Kim et al.	725/37
2002/0066113	A1 *	5/2002	Utsunomiya et al.	725/146
2002/0067829	A1 *	6/2002	Ficco	380/210
2002/0069417	A1 *	6/2002	Kliger et al.	725/78
2002/0144265	A1 *	10/2002	Connelly	725/39
2002/0170073	A1 *	11/2002	Miller et al.	725/139
2002/0184638	A1 *	12/2002	Agnihotri et al.	725/89
2005/0172332	A1 *	8/2005	Fukuda et al.	725/139

FOREIGN PATENT DOCUMENTS

WO	WO 02/19691	*	8/2001
WO	WO /0219691	*	8/2001

* cited by examiner

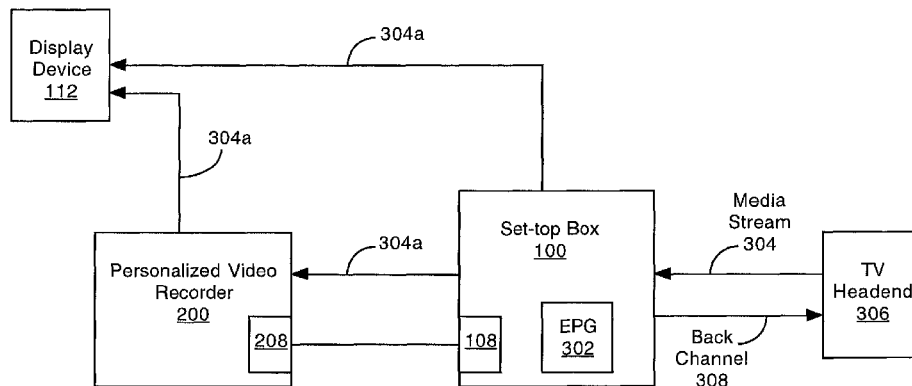
Primary Examiner—Christopher Kelley
Assistant Examiner—Justin E Shepard

(57) **ABSTRACT**

One embodiment of the present invention enables a personalized video recorder (PVR) to reliably record automatically a pay-per-view show that it receives from a set-top box. Specifically, a PVR is communicatively coupled to a set-top box thereby enabling the set-top box to request and receive from the PVR its control commands. The set-top box stores these control commands enabling it to control the functionality of the PVR. Therefore, a user may utilize an electronic programming guide (EPG) provided by the set-top box to program the PVR to record (for example) a pay-per-view show. Upon completion of the programming process, the EPG of the set-top box orders the pay-per-view show while the set-top box transmits the programming instructions to the PVR. After receiving the programming instructions, the PVR adds them to its programmable task list. Subsequently, the PVR receives the ordered pay-per-view show from the set-top box and records it.

18 Claims, 6 Drawing Sheets

300



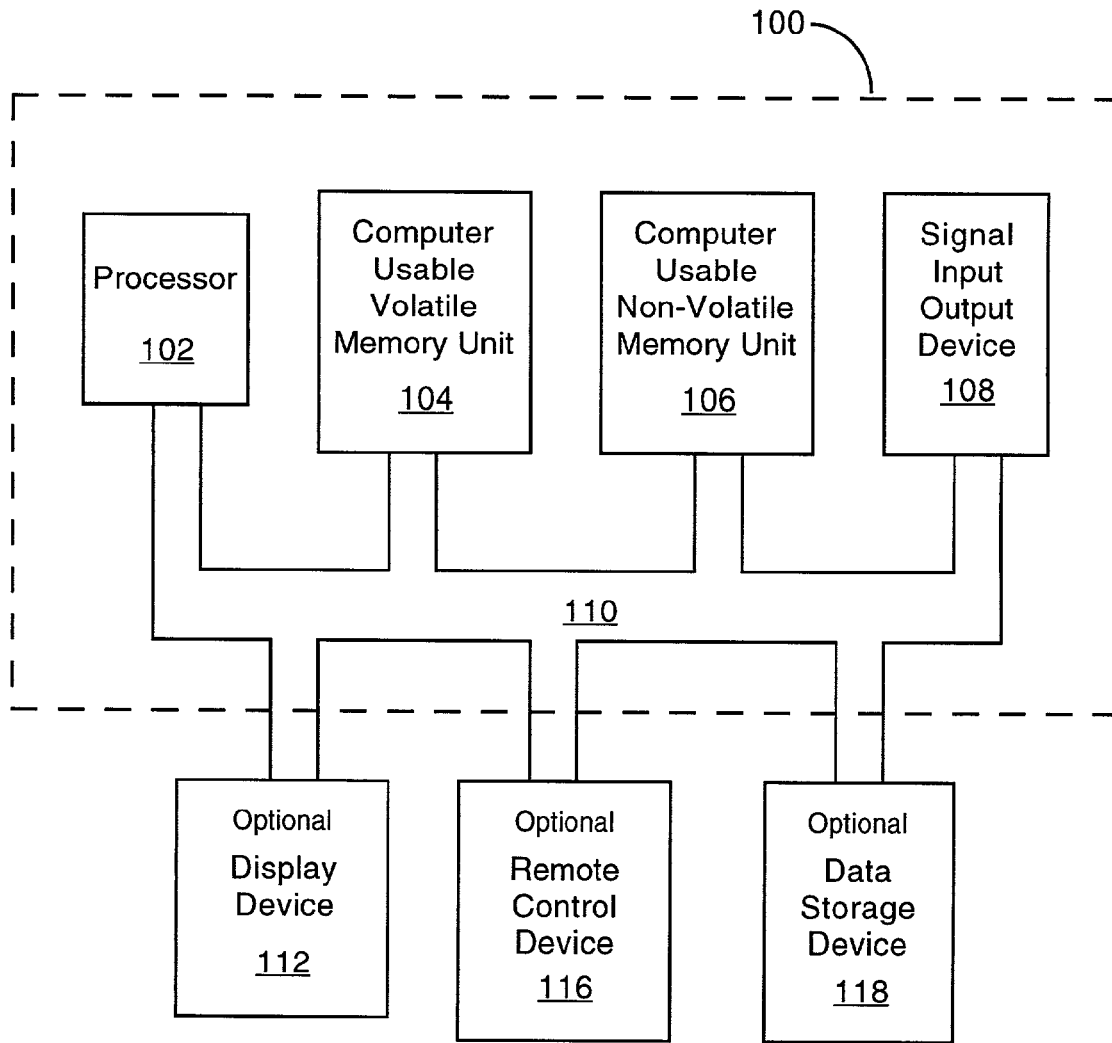


Fig. 1

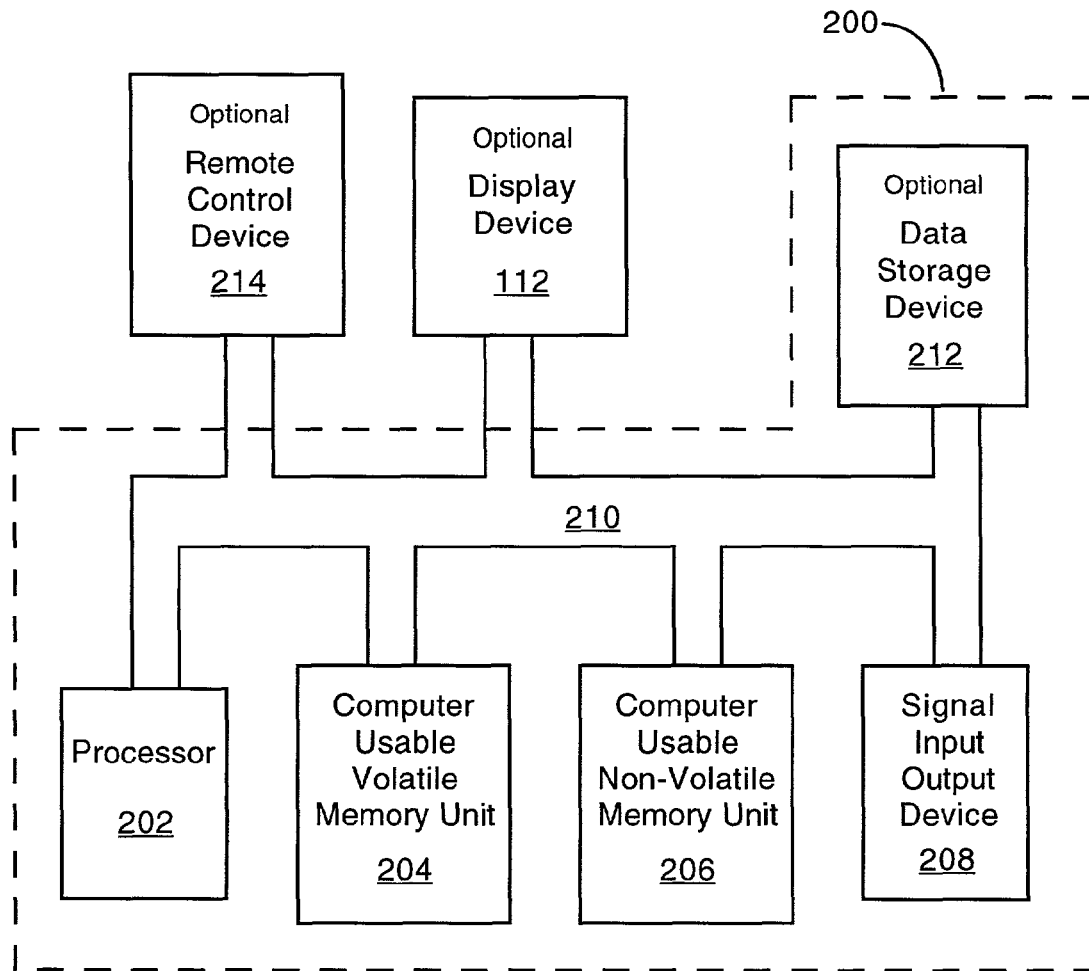


Fig. 2

300

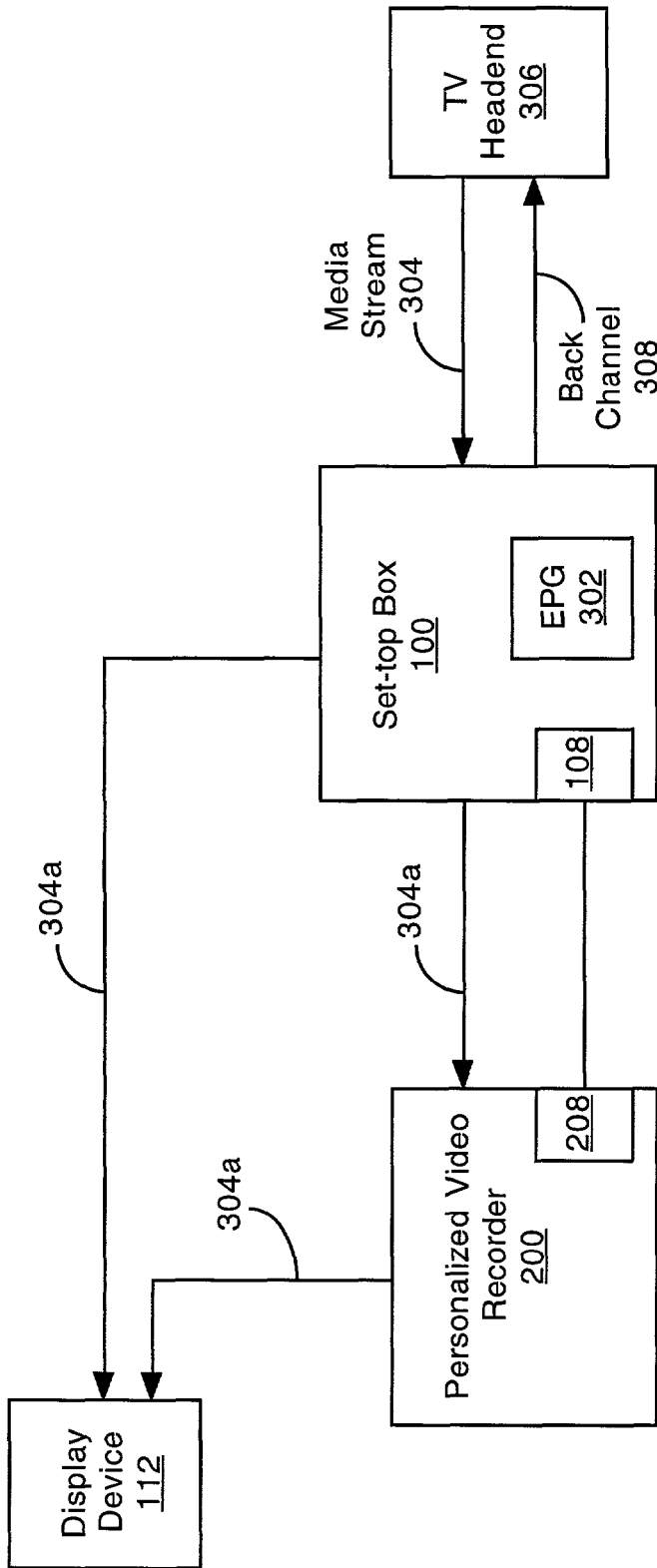


Fig. 3

400

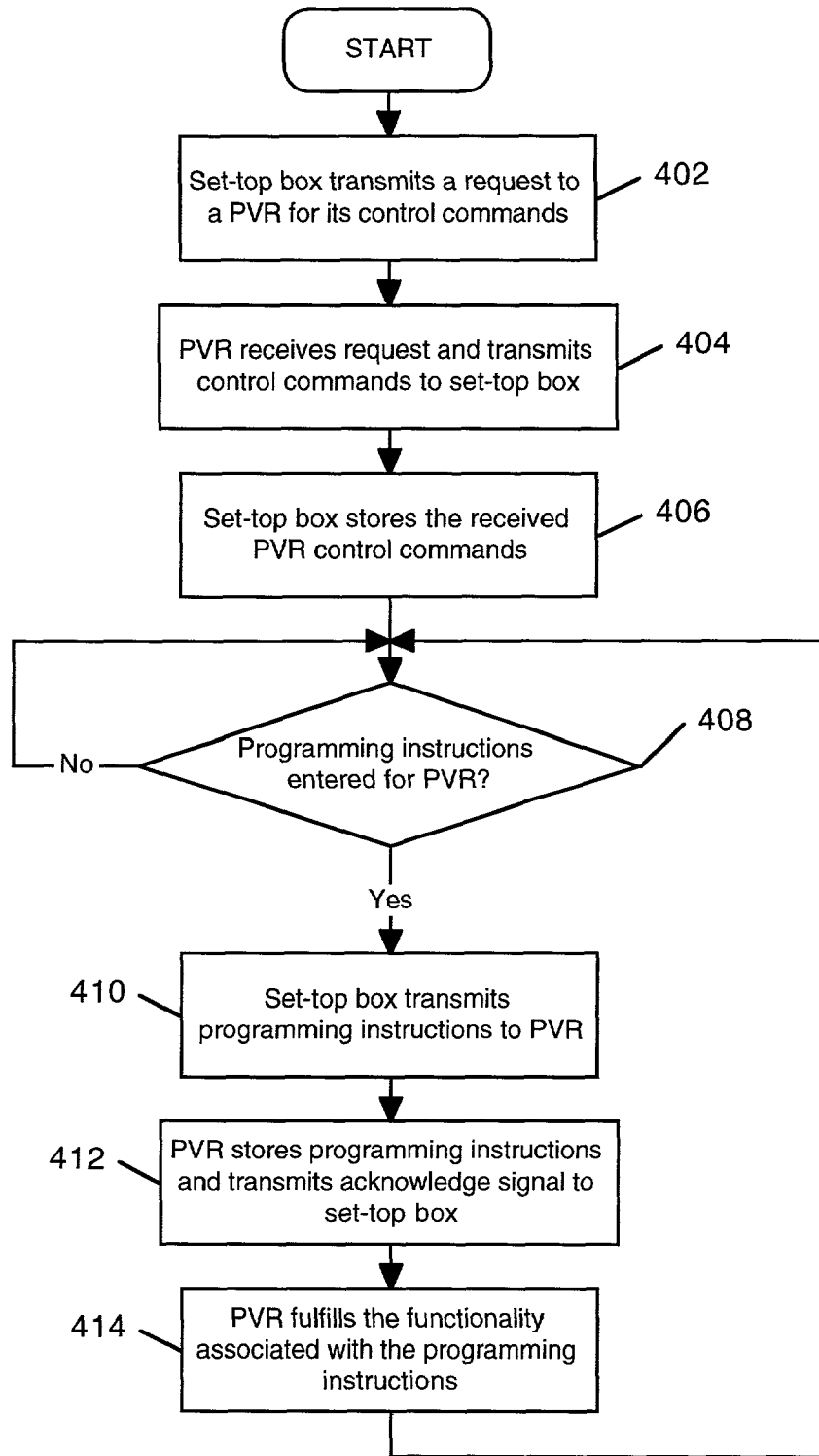


Fig. 4

Explore Litigation Insights

Docket Alarm provides insights to develop a more informed litigation strategy and the peace of mind of knowing you're on top of things.

Real-Time Litigation Alerts



Keep your litigation team up-to-date with **real-time alerts** and advanced team management tools built for the enterprise, all while greatly reducing PACER spend.

Our comprehensive service means we can handle Federal, State, and Administrative courts across the country.

Advanced Docket Research



With over 230 million records, Docket Alarm's cloud-native docket research platform finds what other services can't. Coverage includes Federal, State, plus PTAB, TTAB, ITC and NLRB decisions, all in one place.

Identify arguments that have been successful in the past with full text, pinpoint searching. Link to case law cited within any court document via Fastcase.

Analytics At Your Fingertips



Learn what happened the last time a particular judge, opposing counsel or company faced cases similar to yours.

Advanced out-of-the-box PTAB and TTAB analytics are always at your fingertips.

API

Docket Alarm offers a powerful API (application programming interface) to developers that want to integrate case filings into their apps.

LAW FIRMS

Build custom dashboards for your attorneys and clients with live data direct from the court.

Automate many repetitive legal tasks like conflict checks, document management, and marketing.

FINANCIAL INSTITUTIONS

Litigation and bankruptcy checks for companies and debtors.

E-DISCOVERY AND LEGAL VENDORS

Sync your system to PACER to automate legal marketing.