

United States Patent [19]
Reber et al.

[11] **Patent Number:** **5,961,451**
 [45] **Date of Patent:** **Oct. 5, 1999**

- [54] **NONINVASIVE APPARATUS HAVING A RETAINING MEMBER TO RETAIN A REMOVABLE BIOSENSOR**
- [75] Inventors: **William L. Reber**, Schaumburg;
Jeffrey G. Toler, Algonquin, both of Ill.; **Cary D. Perttunen**, Shelby Township, Mich.
- [73] Assignee: **Motorola, Inc.**, Schaumburg, Ill.
- [21] Appl. No.: **08/833,566**
- [22] Filed: **Apr. 7, 1997**
- [51] **Int. Cl.⁶** **A61B 5/00**
- [52] **U.S. Cl.** **600/322; 600/316; 600/310; 250/341.1**
- [58] **Field of Search** **600/309, 322, 600/346, 347, 572, 573, 578, 314, 316, 575, 583, 584, 562, 310; 604/290, 313; 436/95; 250/341.1; 422/99, 82.05**

5,243,983	9/1993	Tarr et al. .	
5,267,152	11/1993	Yang et al. .	
5,297,548	3/1994	Pologe	600/322
5,310,648	5/1994	Arnold et al. .	
5,313,941	5/1994	Braig et al.	600/322
5,321,265	6/1994	Block .	
5,361,758	11/1994	Hall et al. .	
5,370,114	12/1994	Wong et al. .	
5,379,764	1/1995	Barnes et al. .	
5,383,452	1/1995	Buchert .	
5,398,681	3/1995	Kupersmidt .	
5,424,545	6/1995	Block et al. .	
5,433,197	7/1995	Stark .	
5,434,412	7/1995	Sodickson et al. .	
5,438,201	8/1995	Rosenthal et al. .	
5,448,992	9/1995	Kupersmidt .	
5,458,140	10/1995	Eppstein et al.	600/573
5,459,317	10/1995	Small et al. .	
5,492,118	2/1996	Gratton et al. .	
5,497,772	3/1996	Schulman et al.	600/347
5,507,288	4/1996	Bocker et al.	600/322
5,508,203	4/1996	Fuller et al.	436/149
5,580,794	12/1996	Allen	436/169
5,601,079	2/1997	Wong et al.	600/322
5,617,851	4/1997	Lipkovker	600/573
5,617,852	4/1997	MacGregor	600/322
5,618,275	4/1997	Bock	604/290
5,714,123	2/1998	Sohrab	422/99
5,728,352	3/1998	Poto et al.	422/82.05

[56] **References Cited**
U.S. PATENT DOCUMENTS

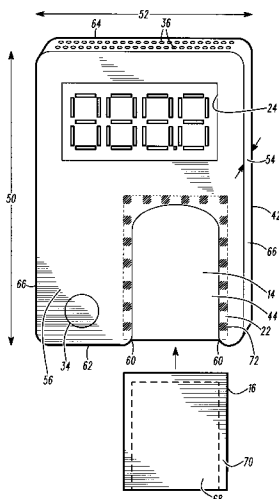
4,014,321	3/1977	March .	
4,655,225	4/1987	Dahne et al. .	
4,750,496	6/1988	Reinhart et al. .	
4,875,486	10/1989	Rapoport et al. .	
4,882,492	11/1989	Schlager .	
4,921,728	5/1990	Takiguchi et al. .	
5,009,230	4/1991	Hutchinson .	
5,019,974	5/1991	Beckers	364/413.02
5,028,787	7/1991	Rosenthal et al. .	
5,036,861	8/1991	Sembrowich et al.	600/573
5,070,874	12/1991	Barnes et al. .	
5,074,977	12/1991	Cheung et al. .	
5,077,476	12/1991	Rosenthal .	
5,086,229	2/1992	Rosenthal et al. .	
5,110,833	5/1992	Mosbach .	
5,112,124	5/1992	Harjunmaa et al. .	
5,119,819	6/1992	Thomas et al. .	
5,137,023	8/1992	Mendelson et al. .	
5,222,496	6/1993	Clarke et al. .	
5,233,997	8/1993	Klein et al. .	
5,237,178	8/1993	Rosenthal et al. .	

Primary Examiner—Richard J. Apley
Assistant Examiner—Justine R. Yu
Attorney, Agent, or Firm—Jeffrey G. Toler; James E. Gauger

[57] **ABSTRACT**

In accordance with a first aspect, a noninvasive apparatus comprises a housing (42) having a grasping region (44), and a noninvasive extraction device (10) to noninvasively extract a sample from a hand of an end user at the grasping region (44). In accordance with a second aspect, a noninvasive apparatus comprises a card-shaped housing which supports the noninvasive extraction device 10. In accordance with a third aspect, a retaining member (22) retains a removable biosensor (16) proximate to at least a portion of the noninvasive extraction device (10).

9 Claims, 5 Drawing Sheets



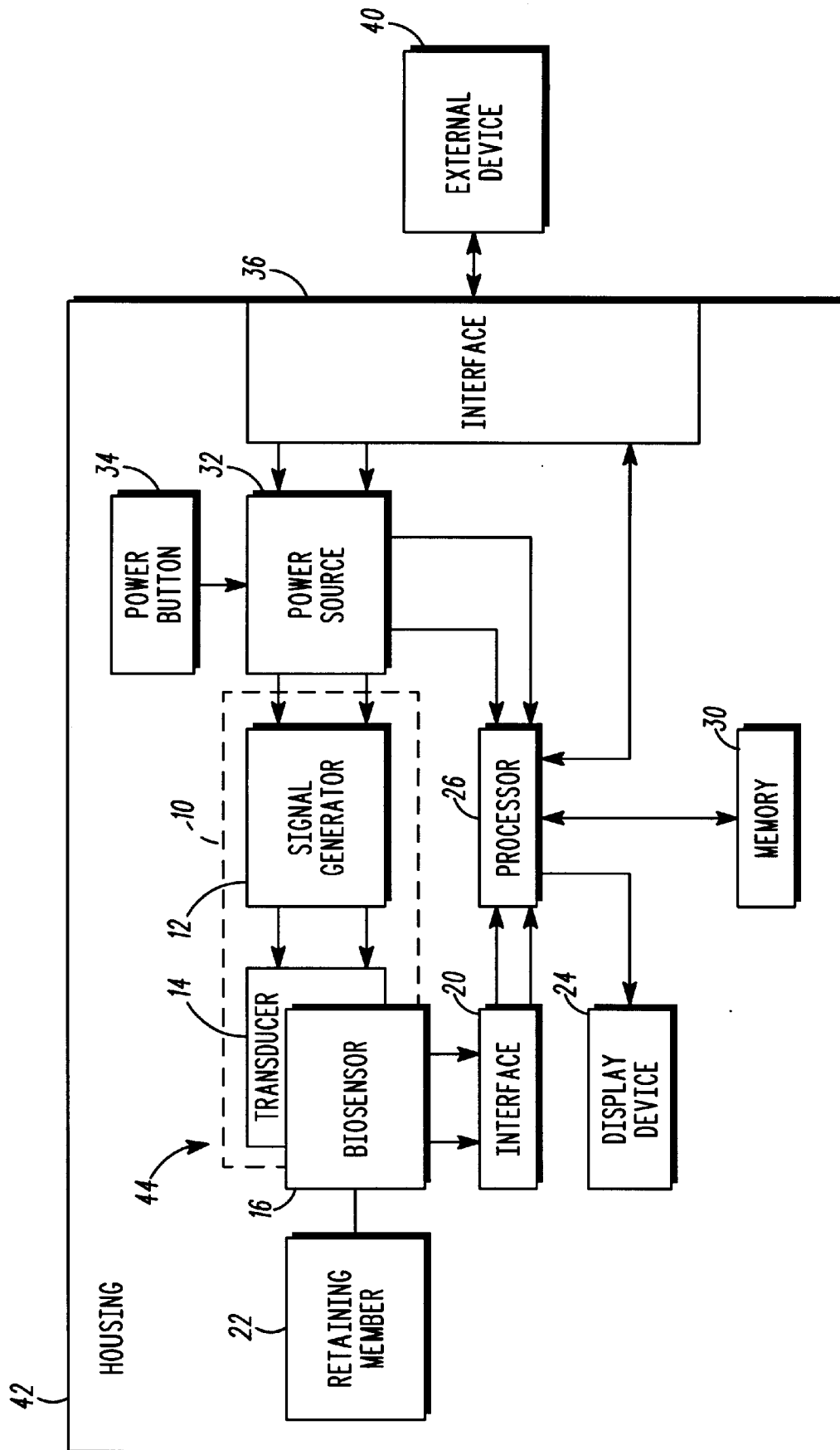


FIG. 1

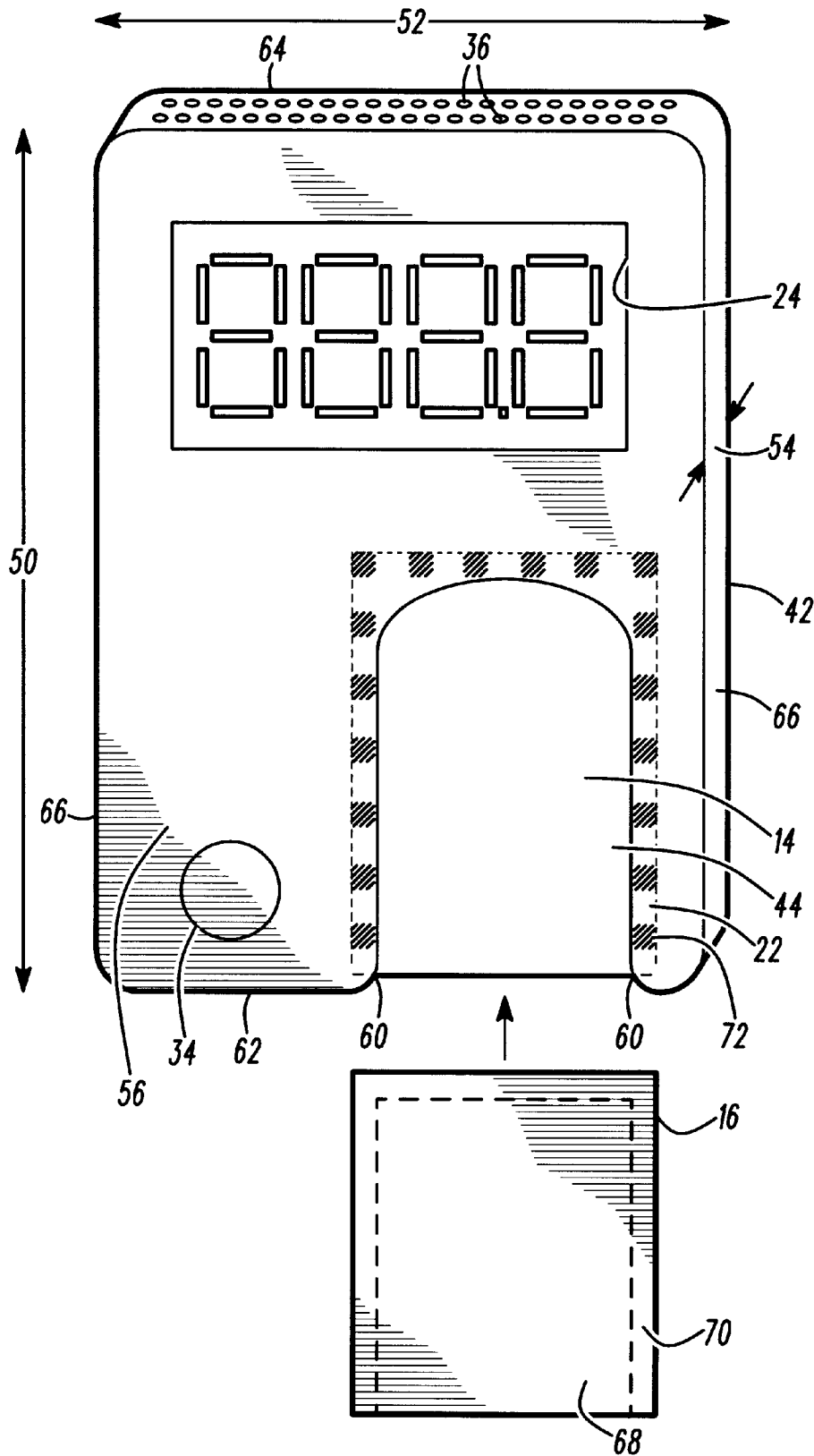


FIG. 2

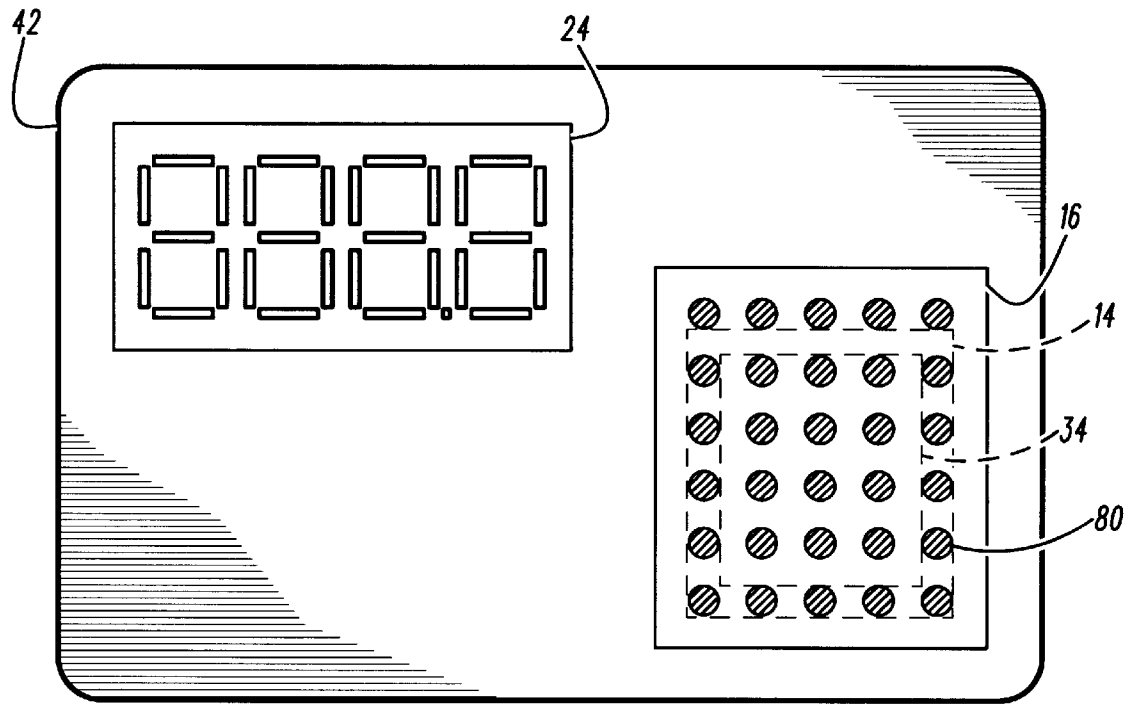


FIG. 3

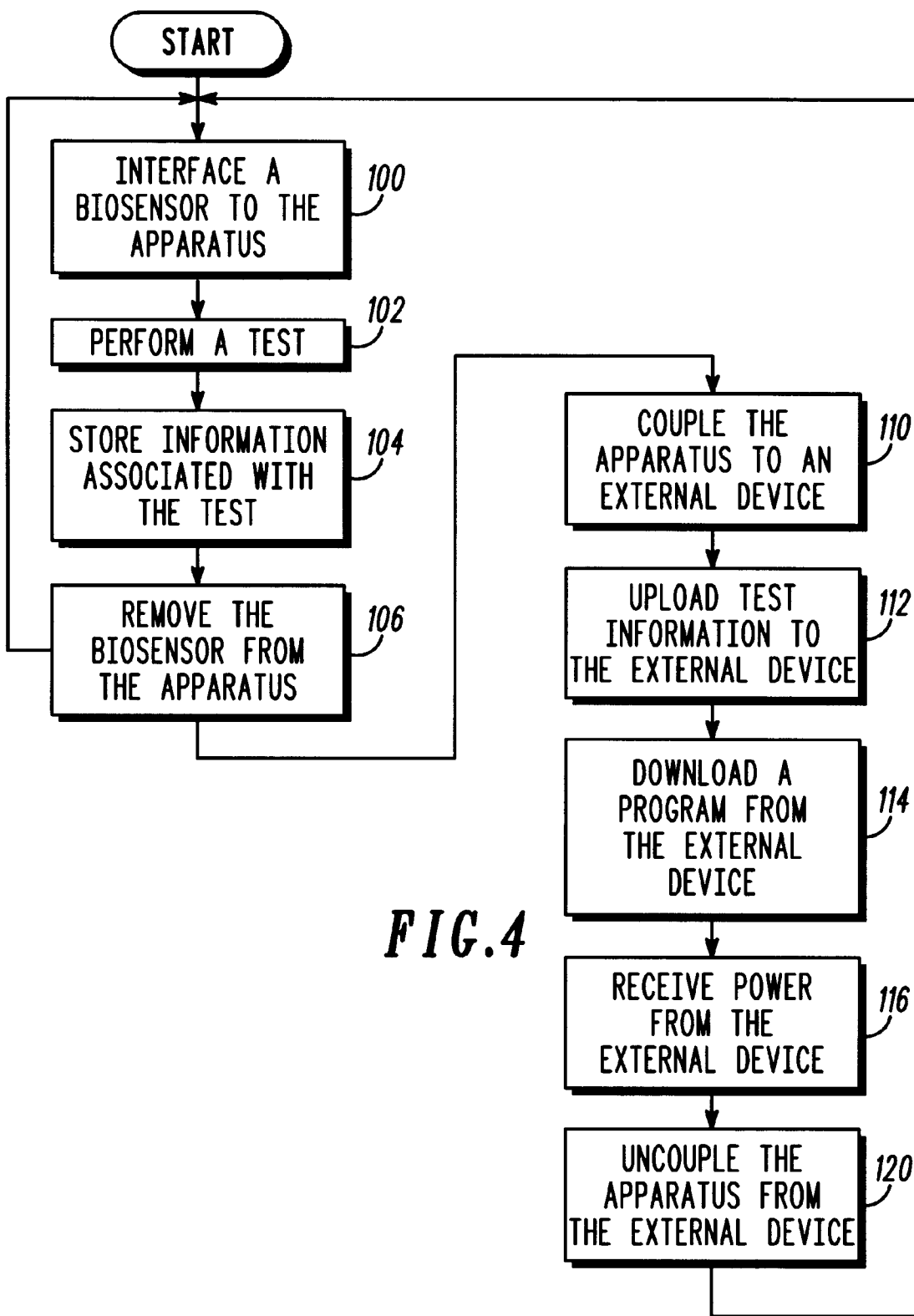


FIG. 4

Explore Litigation Insights

Docket Alarm provides insights to develop a more informed litigation strategy and the peace of mind of knowing you're on top of things.

Real-Time Litigation Alerts



Keep your litigation team up-to-date with **real-time alerts** and advanced team management tools built for the enterprise, all while greatly reducing PACER spend.

Our comprehensive service means we can handle Federal, State, and Administrative courts across the country.

Advanced Docket Research



With over 230 million records, Docket Alarm's cloud-native docket research platform finds what other services can't. Coverage includes Federal, State, plus PTAB, TTAB, ITC and NLRB decisions, all in one place.

Identify arguments that have been successful in the past with full text, pinpoint searching. Link to case law cited within any court document via Fastcase.

Analytics At Your Fingertips



Learn what happened the last time a particular judge, opposing counsel or company faced cases similar to yours.

Advanced out-of-the-box PTAB and TTAB analytics are always at your fingertips.

API

Docket Alarm offers a powerful API (application programming interface) to developers that want to integrate case filings into their apps.

LAW FIRMS

Build custom dashboards for your attorneys and clients with live data direct from the court.

Automate many repetitive legal tasks like conflict checks, document management, and marketing.

FINANCIAL INSTITUTIONS

Litigation and bankruptcy checks for companies and debtors.

E-DISCOVERY AND LEGAL VENDORS

Sync your system to PACER to automate legal marketing.