



US006259863B1

(12) **United States Patent**
Maruyama

(10) **Patent No.:** **US 6,259,863 B1**
(45) **Date of Patent:** **Jul. 10, 2001**

(54) **SILVER HALIDE PHOTOGRAPHIC AND ELECTRONIC IMAGE PICKUP CAMERA**

FOREIGN PATENT DOCUMENTS

10-108054 4/1998 (JP) .

(75) Inventor: **Atsushi Maruyama**, Sagamihara (JP)

* cited by examiner

(73) Assignee: **Olympus Optical Co., Ltd.**, Tokyo (JP)

Primary Examiner—David M. Gray
Assistant Examiner—Arthur A Smith

(*) Notice: Subject to any disclaimer, the term of this patent is extended or adjusted under 35 U.S.C. 154(b) by 0 days.

(57) **ABSTRACT**

A camera includes an exposure device for exposing an image of a subject on a silver halide film; a pop-up unit capable of popping up out of a camera body to a pop-up position; an image pickup contained in the pop-up unit and capable of picking up an image of the subject in a state in which the pop-up unit is popped up out of the camera body; a mode setting device which allows to selectively set a first operation mode of operating both the exposure device and the image pickup and a second operation mode of operating only the image pickup; and a detector for detecting the position of the pop-up unit. A controller is provided for operating the exposure device and/or the image pickup corresponding to the mode set by the mode setting device in response to a manipulation of a release. The controller operates only the exposure device when the first operation mode is set by the mode setting device and when the detector detects that the pop-up unit is not located at the pop-up position.

(21) Appl. No.: **09/595,946**

(22) Filed: **Jun. 16, 2000**

(30) **Foreign Application Priority Data**

Jun. 18, 1999 (JP) 11-173272

(51) **Int. Cl.**⁷ **G03B 15/03**; G03B 41/00

(52) **U.S. Cl.** **396/177**; 396/333; 396/429;
348/64

(58) **Field of Search** 348/64; 358/906,
358/909.1; 396/177, 333, 429

(56) **References Cited**

U.S. PATENT DOCUMENTS

5,740,480 * 4/1998 Kuhn, Jr. et al. 396/177
5,822,625 * 10/1998 Leidig et al. 396/77
5,867,741 * 2/1999 Maruyama et al. 396/187

10 Claims, 7 Drawing Sheets

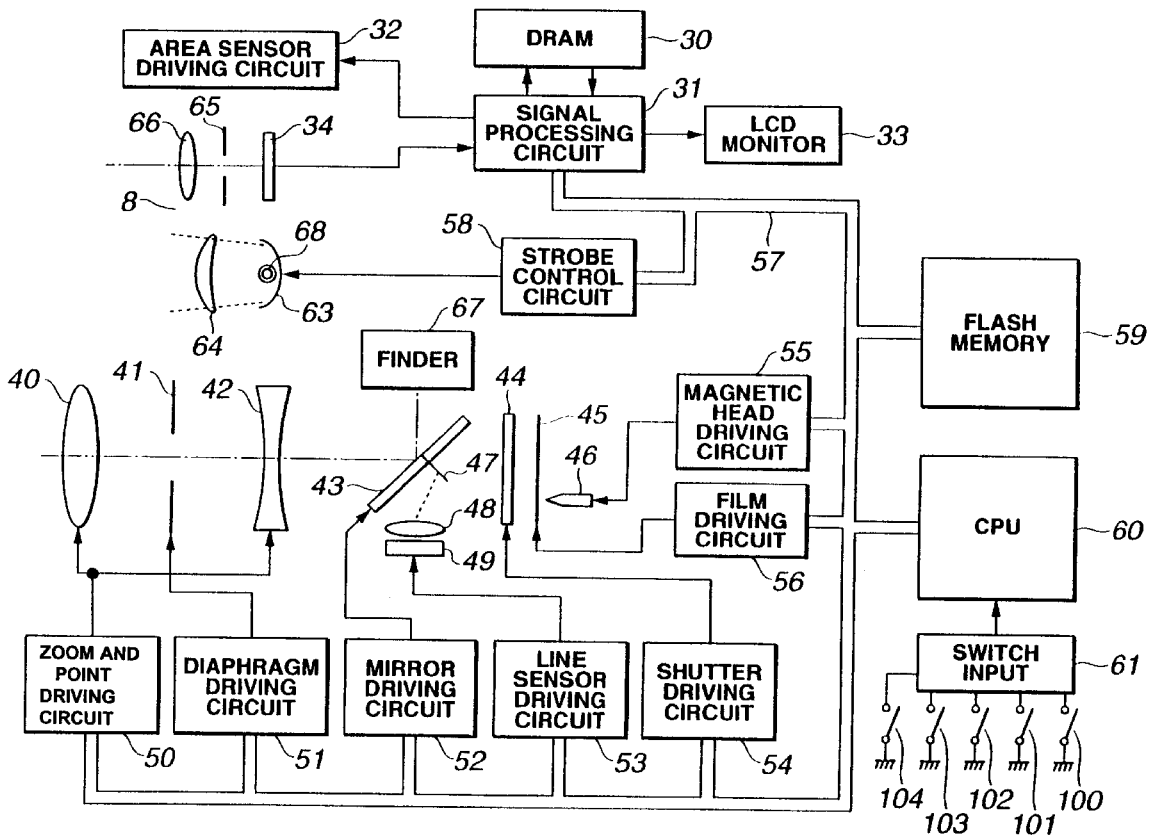


FIG.1

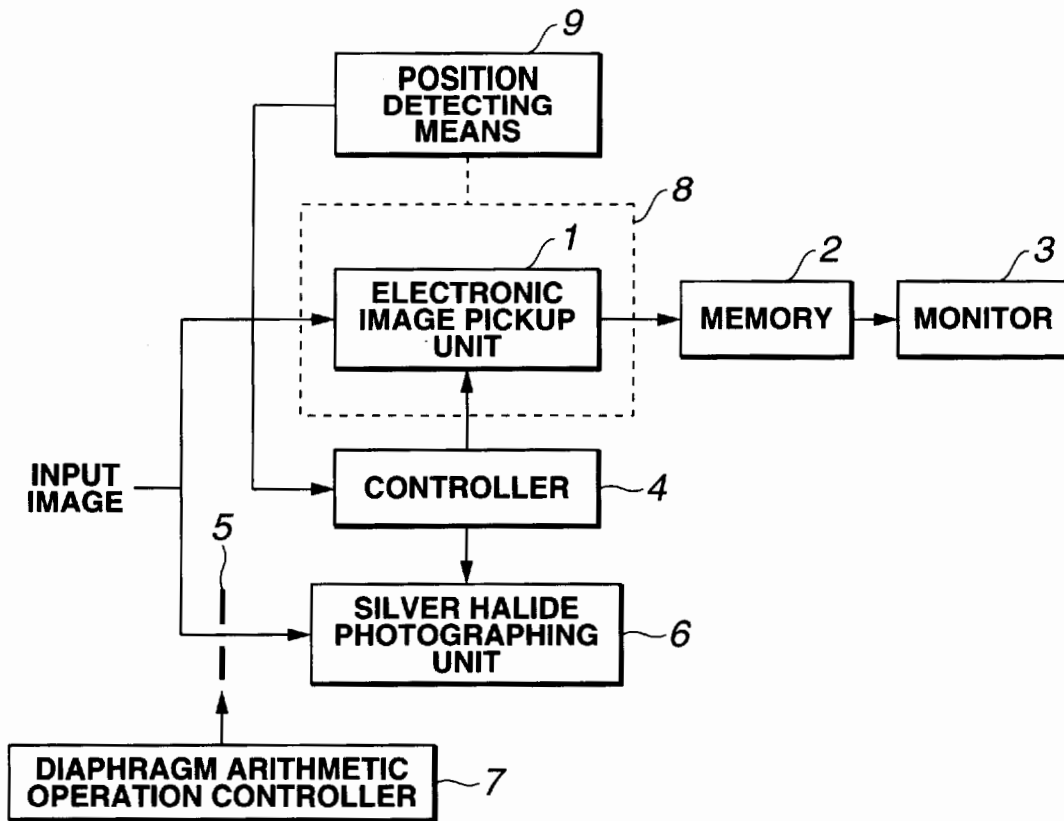


FIG.2

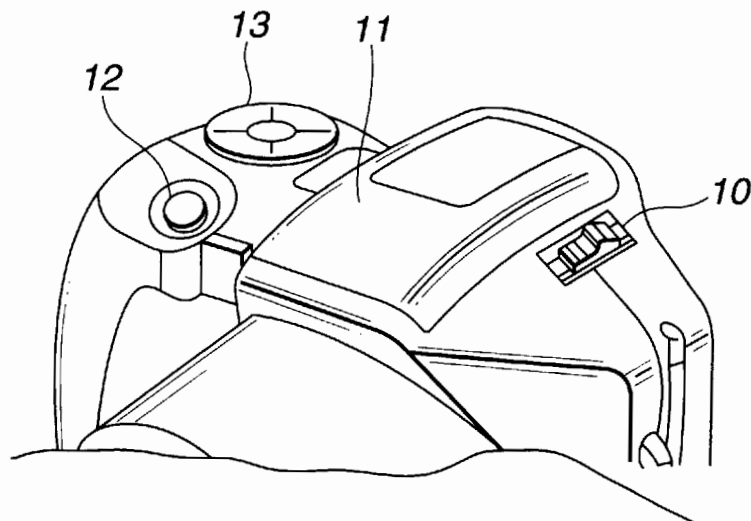


FIG.3

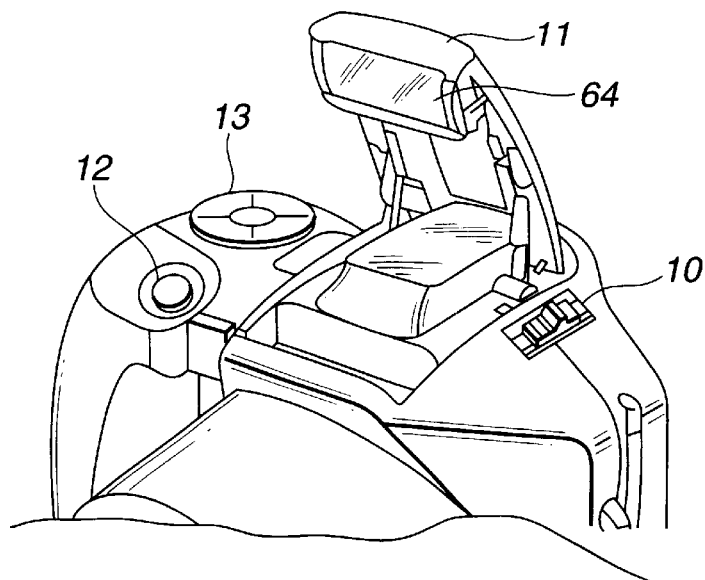


FIG.4

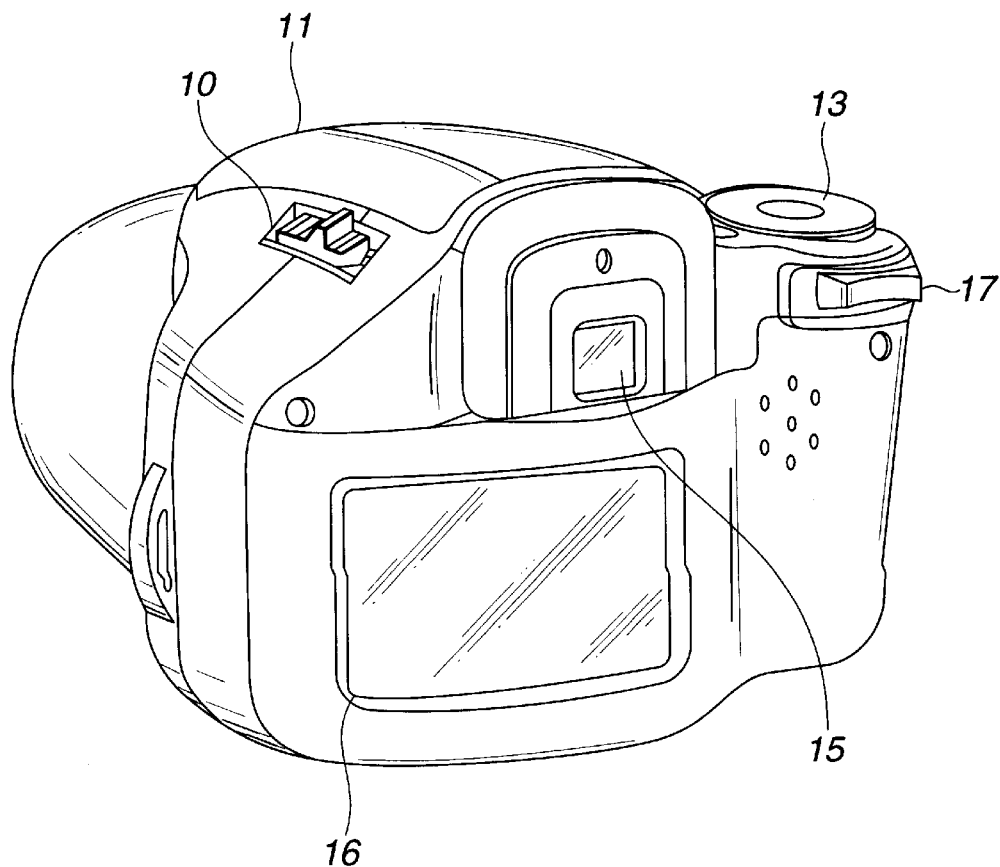


FIG. 5

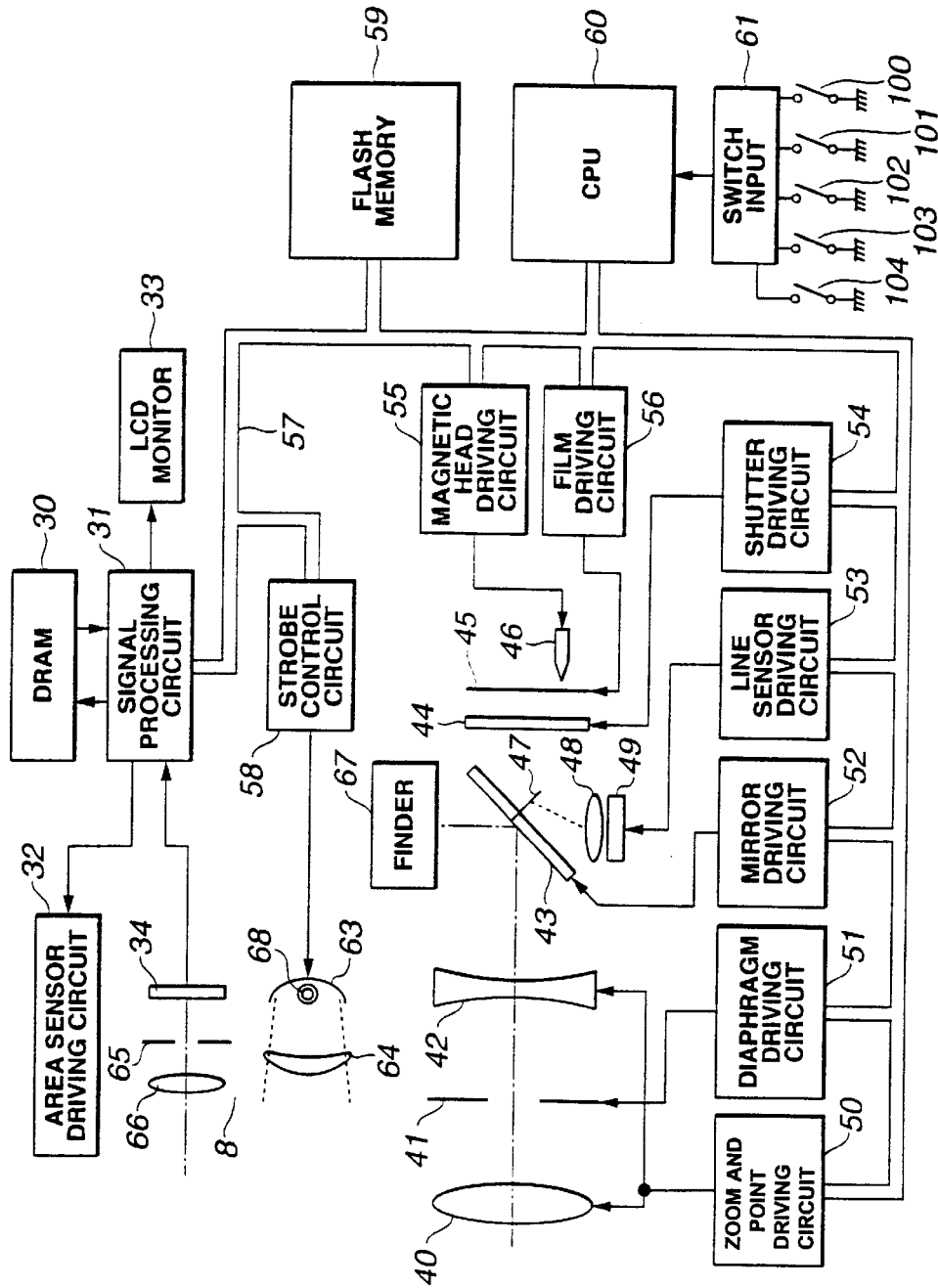
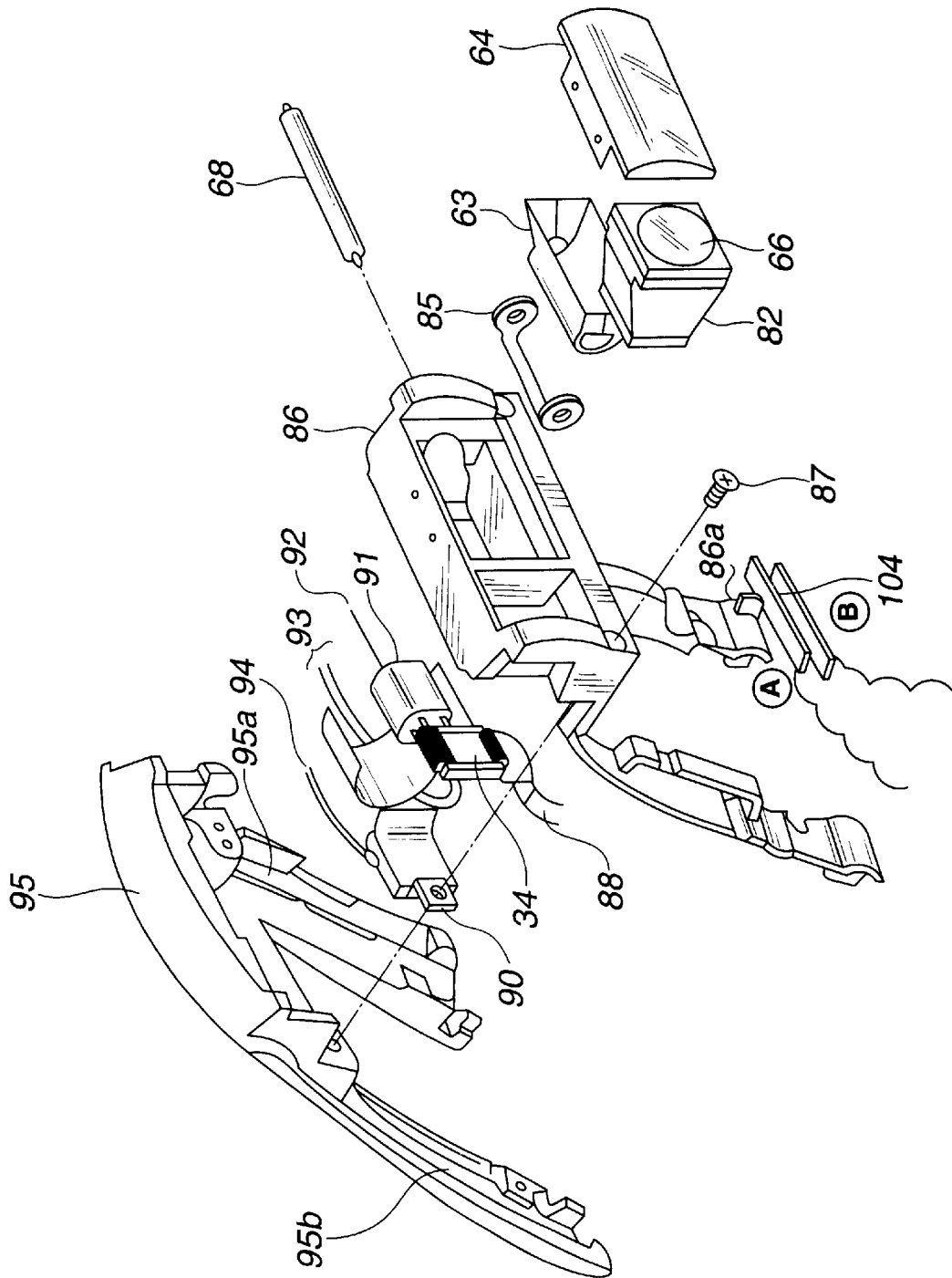


FIG. 6



Explore Litigation Insights

Docket Alarm provides insights to develop a more informed litigation strategy and the peace of mind of knowing you're on top of things.

Real-Time Litigation Alerts



Keep your litigation team up-to-date with **real-time alerts** and advanced team management tools built for the enterprise, all while greatly reducing PACER spend.

Our comprehensive service means we can handle Federal, State, and Administrative courts across the country.

Advanced Docket Research



With over 230 million records, Docket Alarm's cloud-native docket research platform finds what other services can't. Coverage includes Federal, State, plus PTAB, TTAB, ITC and NLRB decisions, all in one place.

Identify arguments that have been successful in the past with full text, pinpoint searching. Link to case law cited within any court document via Fastcase.

Analytics At Your Fingertips



Learn what happened the last time a particular judge, opposing counsel or company faced cases similar to yours.

Advanced out-of-the-box PTAB and TTAB analytics are always at your fingertips.

API

Docket Alarm offers a powerful API (application programming interface) to developers that want to integrate case filings into their apps.

LAW FIRMS

Build custom dashboards for your attorneys and clients with live data direct from the court.

Automate many repetitive legal tasks like conflict checks, document management, and marketing.

FINANCIAL INSTITUTIONS

Litigation and bankruptcy checks for companies and debtors.

E-DISCOVERY AND LEGAL VENDORS

Sync your system to PACER to automate legal marketing.