



US005974454A

United States Patent [19]

[11] Patent Number: **5,974,454**

Apfel et al.

[45] Date of Patent: **Oct. 26, 1999**

[54] **METHOD AND SYSTEM FOR INSTALLING AND UPDATING PROGRAM MODULE COMPONENTS**

Attorney, Agent, or Firm—Jones & Askew, LLP

[57] **ABSTRACT**

[75] Inventors: **Darren A. Apfel**, Redmond; **Michael C. Mathieu**, Seattle; **Lydja K. Williams**, Bellevue, all of Wash.

Installing and updating a software program module component. A determination is made whether the current date is on or after a date stored in a registry key on a computer. If the current date is on or after the date stored in the registry key, then a computer transmits a database query via the Internet to a database server. At the database server, a determination is made whether an upgrade package for the software program module component is available, such as by performing a database lookup. If an upgrade package for the software program module component is available, then an upgrade package message is sent from the database server to the computer. At the computer, a determination is made whether the user wants to download the upgrade package. If so, then an upgrade package query is sent by the computer via the Internet to a package server. At the package server, in response to receiving the upgrade package query, the upgrade package is retrieved and sent over the Internet to the computer. The upgrade package is then installed on the computer to update the software program module component.

[73] Assignee: **Microsoft Corporation**, Redmond, Wash.

[21] Appl. No.: **08/970,668**

[22] Filed: **Nov. 14, 1997**

[51] Int. Cl.⁶ **G06F 9/445**

[52] U.S. Cl. **709/221; 709/218; 395/712**

[58] Field of Search **709/221, 218; 395/712**

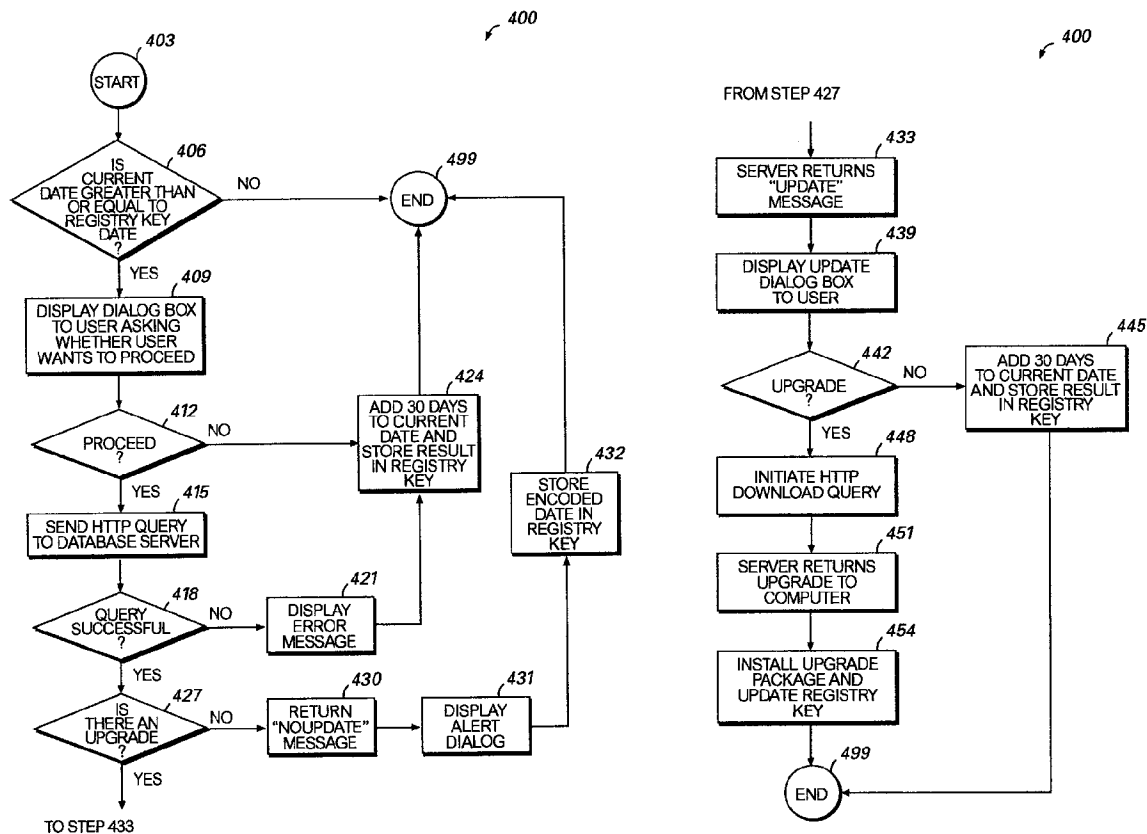
[56] **References Cited**

U.S. PATENT DOCUMENTS

5,732,275	3/1998	Kullick et al.	395/712
5,805,891	9/1998	Bizuneh et al.	395/704
5,845,077	12/1998	Fawcett	709/221
5,909,581	6/1999	Park	395/712

Primary Examiner—Robert B. Harrell
Assistant Examiner—Kenneth R. Coulter

17 Claims, 5 Drawing Sheets



MICROSOFT CORP.

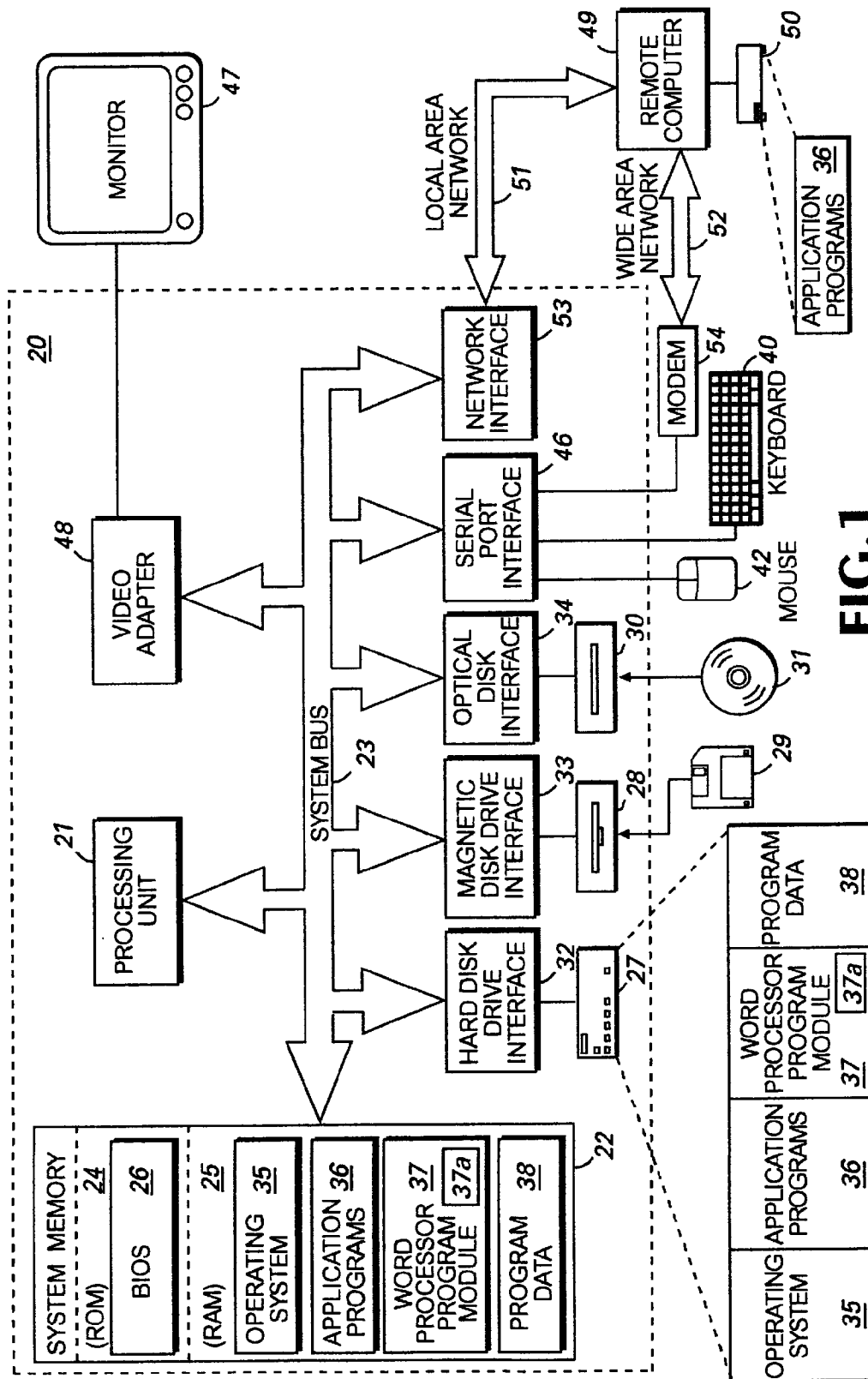


FIG. 1

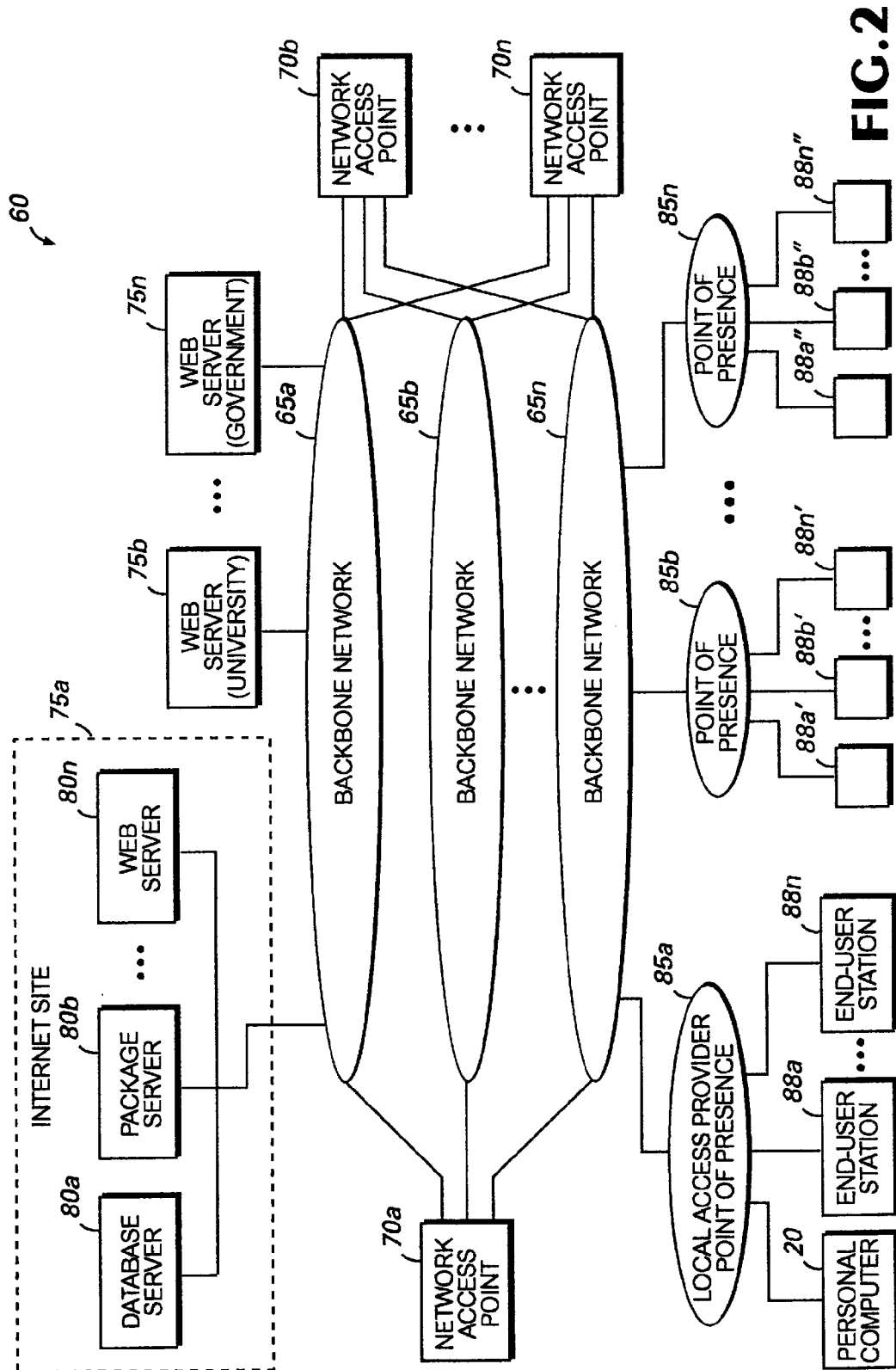


FIG. 2

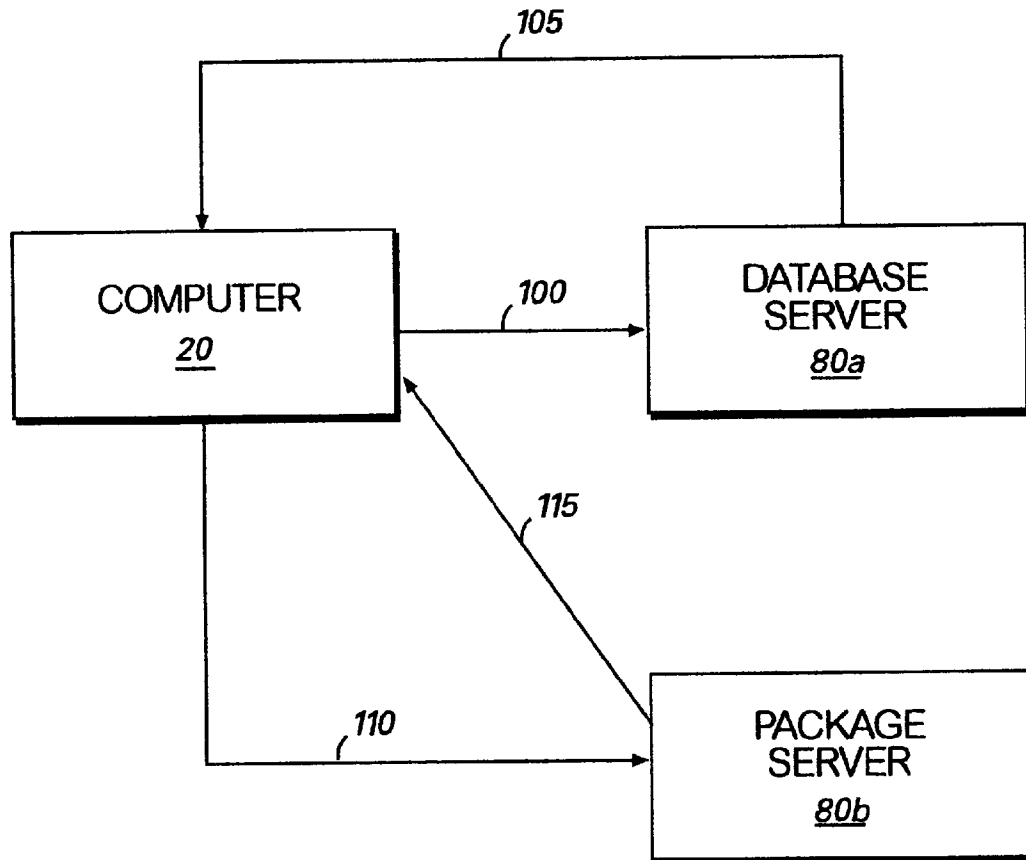


FIG. 3

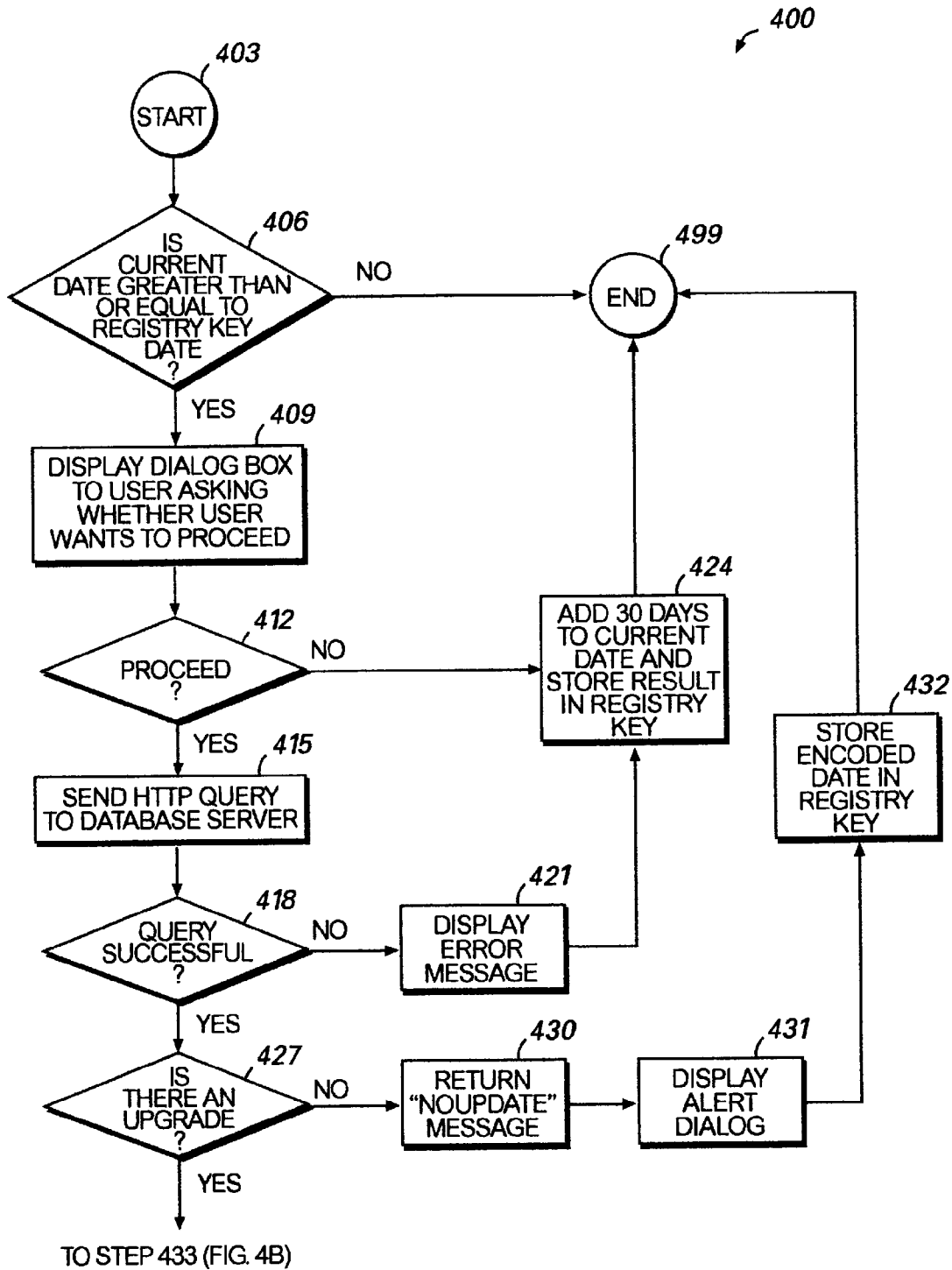


FIG.4A

Explore Litigation Insights

Docket Alarm provides insights to develop a more informed litigation strategy and the peace of mind of knowing you're on top of things.

Real-Time Litigation Alerts



Keep your litigation team up-to-date with **real-time alerts** and advanced team management tools built for the enterprise, all while greatly reducing PACER spend.

Our comprehensive service means we can handle Federal, State, and Administrative courts across the country.

Advanced Docket Research



With over 230 million records, Docket Alarm's cloud-native docket research platform finds what other services can't. Coverage includes Federal, State, plus PTAB, TTAB, ITC and NLRB decisions, all in one place.

Identify arguments that have been successful in the past with full text, pinpoint searching. Link to case law cited within any court document via Fastcase.

Analytics At Your Fingertips



Learn what happened the last time a particular judge, opposing counsel or company faced cases similar to yours.

Advanced out-of-the-box PTAB and TTAB analytics are always at your fingertips.

API

Docket Alarm offers a powerful API (application programming interface) to developers that want to integrate case filings into their apps.

LAW FIRMS

Build custom dashboards for your attorneys and clients with live data direct from the court.

Automate many repetitive legal tasks like conflict checks, document management, and marketing.

FINANCIAL INSTITUTIONS

Litigation and bankruptcy checks for companies and debtors.

E-DISCOVERY AND LEGAL VENDORS

Sync your system to PACER to automate legal marketing.