

## Declaration of Rachel J. Watters on Authentication of Publication

I, Rachel J. Watters, am a librarian, and the Director of Wisconsin TechSearch (“WTS”), located at 728 State Street, Madison, Wisconsin, 53706. WTS is an interlibrary loan department at the University of Wisconsin-Madison. I have worked as a librarian at the University of Wisconsin library system since 1998. I have been employed at WTS since 2002, first as a librarian and, beginning in 2011, as the Director. Through the course of my employment, I have become well informed about the operations of the University of Wisconsin library system, which follows standard library practices.

This Declaration relates to the dates of receipt and availability of the following:

**Miller, G.A., Beckwith, R., Fellbaum, C., Gross, D., and Miller, K.J. (1990) Introduction to WordNet: an on-line lexical database. *International Journal of Lexicography*, 3(4), 235-244.**

*Standard operating procedures for materials at the University of Wisconsin-Madison Libraries.* When an issue was received by the Library, it would be checked in, stamped with the date of receipt, added to library holdings records, and made available to readers as soon after its arrival as possible. The procedure normally took a few days or at most 2 to 3 weeks.

Exhibit A to this Declaration is true and accurate copy of the title page with library date stamp of *International Journal of Lexicography* (1990), from the University of Wisconsin-Madison Library collection. Exhibit A also includes an excerpt of pages 235 to 244 of that issue, showing the article entitled *Introduction to WordNet: an on-*

Declaration of Rachel J. Watters on Authentication of Publication


*line lexical database* (1990). Based on this information, the date stamp on the journal title page indicates *Introduction to WordNet: an on-line lexical database* (1990) was received by the University of Wisconsin-Madison Libraries on January 4, 1991.

Based on the information in Exhibit A, it is clear that the volume was received by the library on or before January 4, 1991, catalogued and available to library patrons within a few days or at most 2 to 3 weeks after January 4, 1991.

I declare that all statements made herein of my own knowledge are true and that all statements made on information and belief are believed to be true; and further that these statements were made with the knowledge that willful false statements and the like so made are punishable by fine or imprisonment, or both, under Section 1001 of Title 18 of the United States Code.

Date: February 28, 2020

Wisconsin TechSearch  
Memorial Library  
728 State Street  
Madison, Wisconsin 53706

  
\_\_\_\_\_  
Rachel J. Watters  
Director



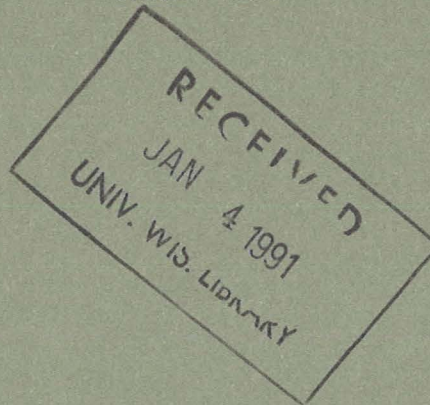
ISSN 0950-3846

International Journal of

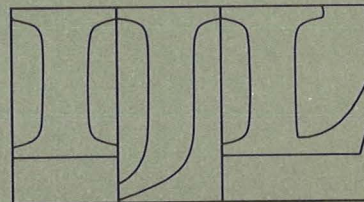
PR

# *Lexicography*

Volume 3 Number 4  
Winter 1990



Oxford University Press



# International Journal of Lexicography

**Editor: Robert Ilson** (58 Antrim Mansions, Antrim Road, London NW3 4XU, UK)

## Editorial Board

European Association for Lexicography (EURALEX)—Executive Board:

M Alvar Ezquerro, Ju D Apresjan, B T Atkins, H Béjoint, R R K Hartmann,  
F E Knowles, O Norling-Christensen, M Snell-Hornby, S Ter-Minasova, A Zampolli,  
R F Ilson (co-opted)

Dictionary Society of North America (DSNA)—Executive Board:

J Algeo, W Frawley, D B Guralnik, V G McDavid, L T Milic, R J Steiner, L K  
Vandersall

J Aitchison (London)

J M Channell (Nottingham)

COBUILD (Birmingham)

Cordell Collection of Dictionaries  
(Terre Haute)—David E Vancil

A P Cowie (Leeds)

D Crystal (Bangor)

Dictionaries Editorial Committee  
(OUP)—Lesley Burnett

Dictionary Research Centre  
(Exeter)—R R K Hartmann

F Dubois Charlier (Paris)

Erlanger Zentrum für  
Wörterbuchforschung (Erlangen-  
Nürnberg)—F J Hausmann

C J Fillmore (Berkeley)

W Frawley (Newark, Delaware)

Y Ikegami (Tokyo)

Istituto di Linguistica

Computazionale (Pisa)—

A Zampolli

LADS (Liège)

T McArthur (Cambridge)

W Martin (Amsterdam)

Igor Mel'čuk (Montréal)

MLA Discussion Group on Lexicography

A W Read (New York)

J Rey-Debove (Paris)

SILEX (Lille)—P Corbin

L Urdang (Old Lyme)

H E Wiegand (Heidelberg)

L Zgusta (Urbana-Champaign)

## Subscriptions

Published quarterly, at an annual subscription of £35 in the UK, US\$68 in N. America, £42 elsewhere; single issues £10.50 in the UK, US\$20 in N. America, £12.50 elsewhere. Prices include postage by surface mail or, for subscribers in the USA, Canada, India, Japan, Australia and New Zealand, by Air Speeded Post. Airmail rates are available on request.

Contributors to the Journal are entitled to one year's subscription at half price.

## Order information

Payment is required with all orders and subscriptions are accepted and entered by the volume. Payment may be made by cheque or Eurocheque (payable to Oxford University Press), National Girobank (account 500 1056), credit card (Access, Visa, American Express, Diners Club), or UNESCO coupons.

Please send orders and requests for sample copies to the Journals Subscriptions Department, Oxford University Press, Pinkhill House, Southfield Road, Eynsham OX8 1JJ, UK. Telex 83147 OXPRESG.

## Advertising

Advertisements are welcomed and rates will be quoted on request. Enquiries should be addressed to the Journals Advertising Coordinator, Journals Production Department, Oxford University Press, Pinkhill House, Southfield Road, Eynsham OX8 1JJ, UK.

Authorization to photocopy items for internal or personal use, or the internal or personal use of specific clients, is granted by Oxford University Press for users in the USA registered with the Copyright Clearance Center (CCC) Transactional Reporting Service, provided that the base fee of \$3.00 per copy is paid directly to CCC, 27 Congress Street, Salem, MA 01970. For those organizations that have been granted a photocopy licence by CCC a separate system of payment has been arranged. The fee code for users of the Transactional Reporting Service is: 0950-3846/90 \$3.00.

© 1990 Oxford University Press

---

# International Journal of Lexicography

Volume 3 Number 4 Winter 1990

---

## Contents

Introduction to WordNet: An On-line Lexical Database. <i>George A. Miller, Richard Beckwith, Christiane Fellbaum, Derek Gross and Katherine J. Miller</i>	235
Nouns in WordNet: A Lexical Inheritance System. <i>George A. Miller</i>	245
Adjectives in WordNet. <i>Derek Gross and Katherine J. Miller</i>	265
English Verbs as a Semantic Net. <i>Christiane Fellbaum</i>	278
Implementing a Lexical Network. <i>Richard Beckwith and George A. Miller</i>	302
<b>The EURALEX Bulletin</b>	<b>i</b>

Oxford University Press

# Explore Litigation Insights

Docket Alarm provides insights to develop a more informed litigation strategy and the peace of mind of knowing you're on top of things.

## Real-Time Litigation Alerts



Keep your litigation team up-to-date with **real-time alerts** and advanced team management tools built for the enterprise, all while greatly reducing PACER spend.

Our comprehensive service means we can handle Federal, State, and Administrative courts across the country.

## Advanced Docket Research



With over 230 million records, Docket Alarm's cloud-native docket research platform finds what other services can't. Coverage includes Federal, State, plus PTAB, TTAB, ITC and NLRB decisions, all in one place.

Identify arguments that have been successful in the past with full text, pinpoint searching. Link to case law cited within any court document via Fastcase.

## Analytics At Your Fingertips



Learn what happened the last time a particular judge, opposing counsel or company faced cases similar to yours.

Advanced out-of-the-box PTAB and TTAB analytics are always at your fingertips.

## API

Docket Alarm offers a powerful API (application programming interface) to developers that want to integrate case filings into their apps.

## LAW FIRMS

Build custom dashboards for your attorneys and clients with live data direct from the court.

Automate many repetitive legal tasks like conflict checks, document management, and marketing.

## FINANCIAL INSTITUTIONS

Litigation and bankruptcy checks for companies and debtors.

## E-DISCOVERY AND LEGAL VENDORS

Sync your system to PACER to automate legal marketing.