



US005721902A

United States Patent [19]

[11] Patent Number: 5,721,902

Schultz

[45] Date of Patent: Feb. 24, 1998

[54] RESTRICTED EXPANSION OF QUERY TERMS USING PART OF SPEECH TAGGING

- 648113 11/1992 Australia .
- 4213393 10/1993 Australia .
- 9427227 11/1994 WIPO .
- 9427237 11/1994 WIPO .
- 9500896 1/1995 WIPO .
- 9512172 5/1995 WIPO .
- 9513582 5/1995 WIPO .
- 9513585 5/1995 WIPO .
- 9514279 5/1995 WIPO .
- 9514280 5/1995 WIPO .
- 9518406 7/1995 WIPO .

[75] Inventor: John Michael Schultz, Bala Cynwyd, Pa.

[73] Assignee: Infonautics Corporation, Wayne, Pa.

[21] Appl. No.: 528,740

[22] Filed: Sep. 15, 1995

[51] Int. Cl.⁶ G06F 17/30

[52] U.S. Cl. 395/604; 364/419; 364/419.08; 364/222.01; 364/225; 364/225.3; 364/225.4

[58] Field of Search 364/19.08, 419, 364/419.08, 222.01, 225.3, 225.4, 225; 395/600, 605, 604

Primary Examiner—Thomas G. Black
Assistant Examiner—Jean M. Corriélus
Attorney, Agent, or Firm—Reed Smith Shaw & McClay

[57] ABSTRACT

A method for searching a database of an information retrieval system in response to a query having at least one query word with a part of speech. for applying the query word to the database and selecting information from the database according to the query word. A semantic network is provided for determining expansion words to expand the search of the database in response to said the query word. The part of speech of the selected query word is determined. The selected query word is applied to the semantic network to provide a query expansion word in response to the selected query word. The part of speech of the query expansion word is determined. The query expansion word is applied to the database in accordance with the part of speech of the selected query word and the part of speech of the query expansion word.

[56] References Cited

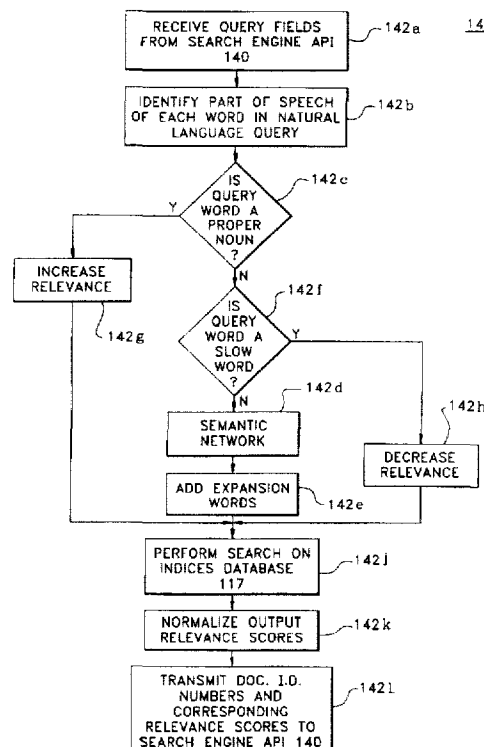
U.S. PATENT DOCUMENTS

4,849,898	7/1989	Adi	364/419
4,868,733	9/1989	Fujisawa et al.	364/200
5,099,426	3/1992	Cargren et al.	364/419
5,146,405	9/1992	Church	364/419
5,241,671	8/1993	Reed et al.	395/610
5,265,065	11/1993	Turle	395/600
5,297,039	3/1994	Kanaegami et al.	364/419.08
5,331,556	7/1994	Black et al.	364/419.08
5,477,448	12/1995	Golding et al.	364/419.08
5,485,372	1/1996	Golding et al.	364/419.08
5,544,049	8/1996	Henderson et al.	364/419.19

FOREIGN PATENT DOCUMENTS

624837 12/1989 Australia .

4 Claims, 22 Drawing Sheets



100

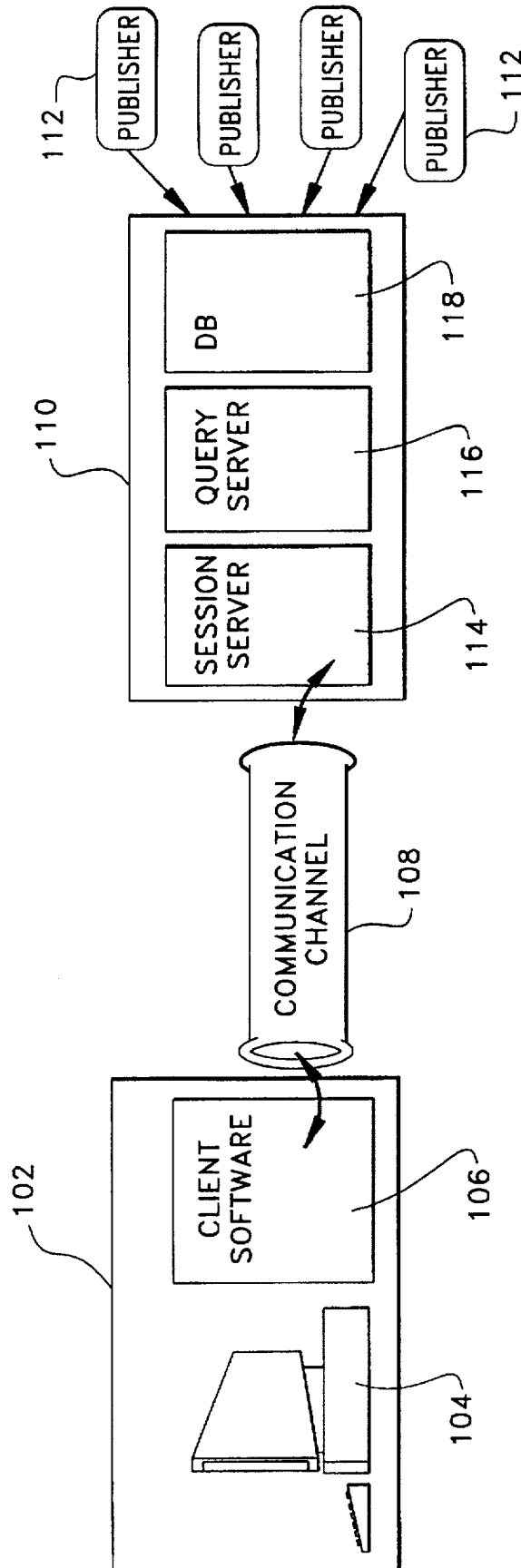


FIG. 1

200

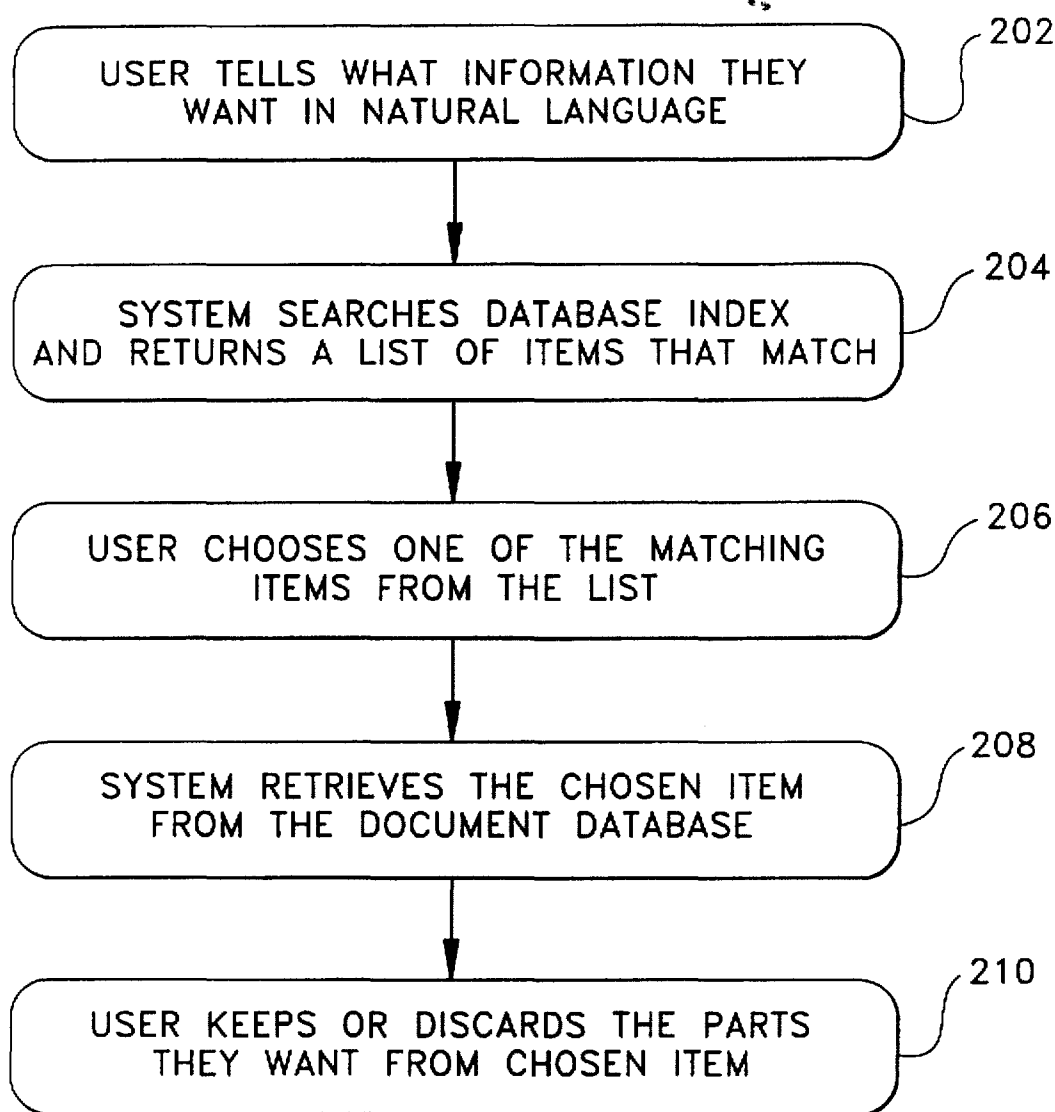
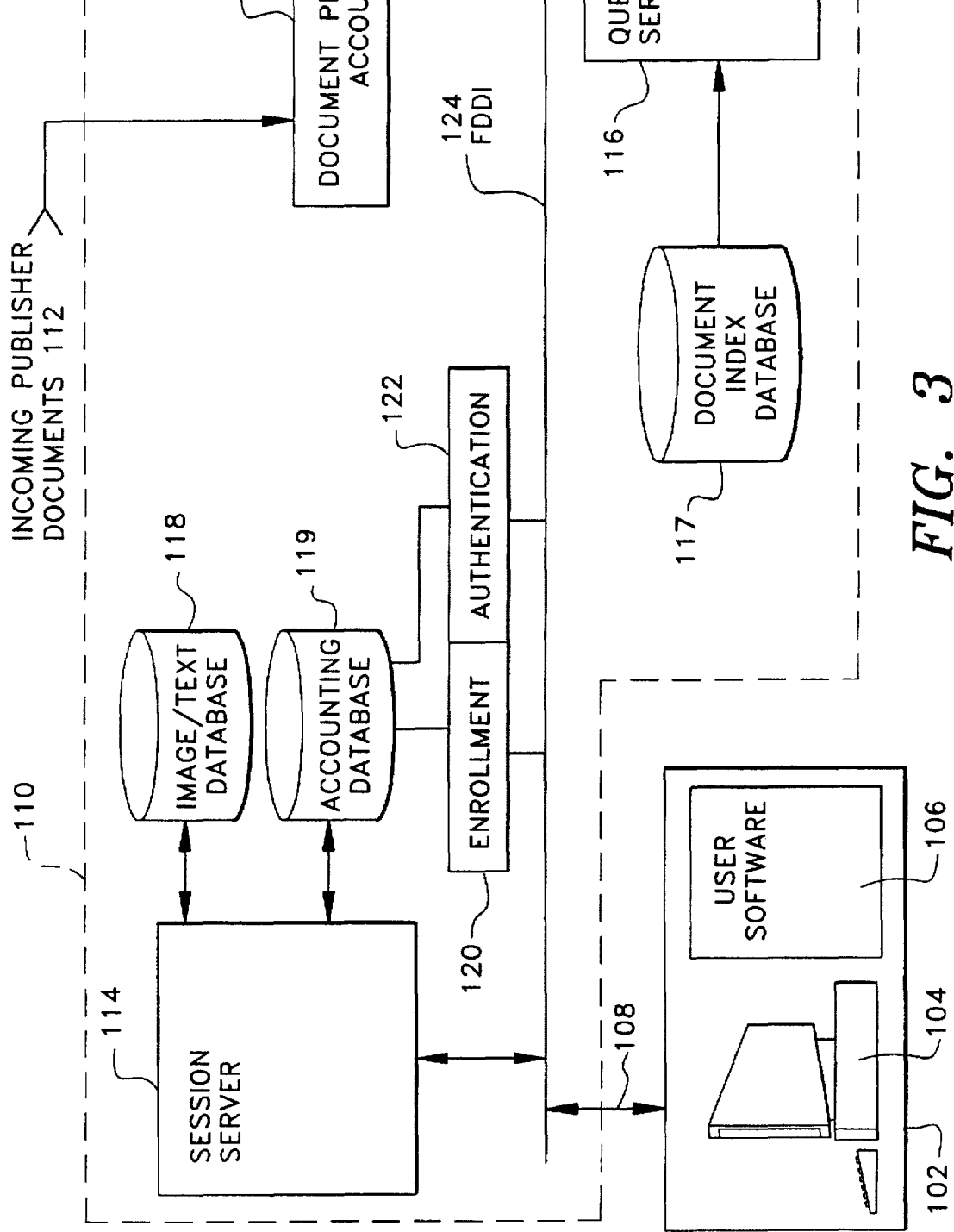


FIG. 2



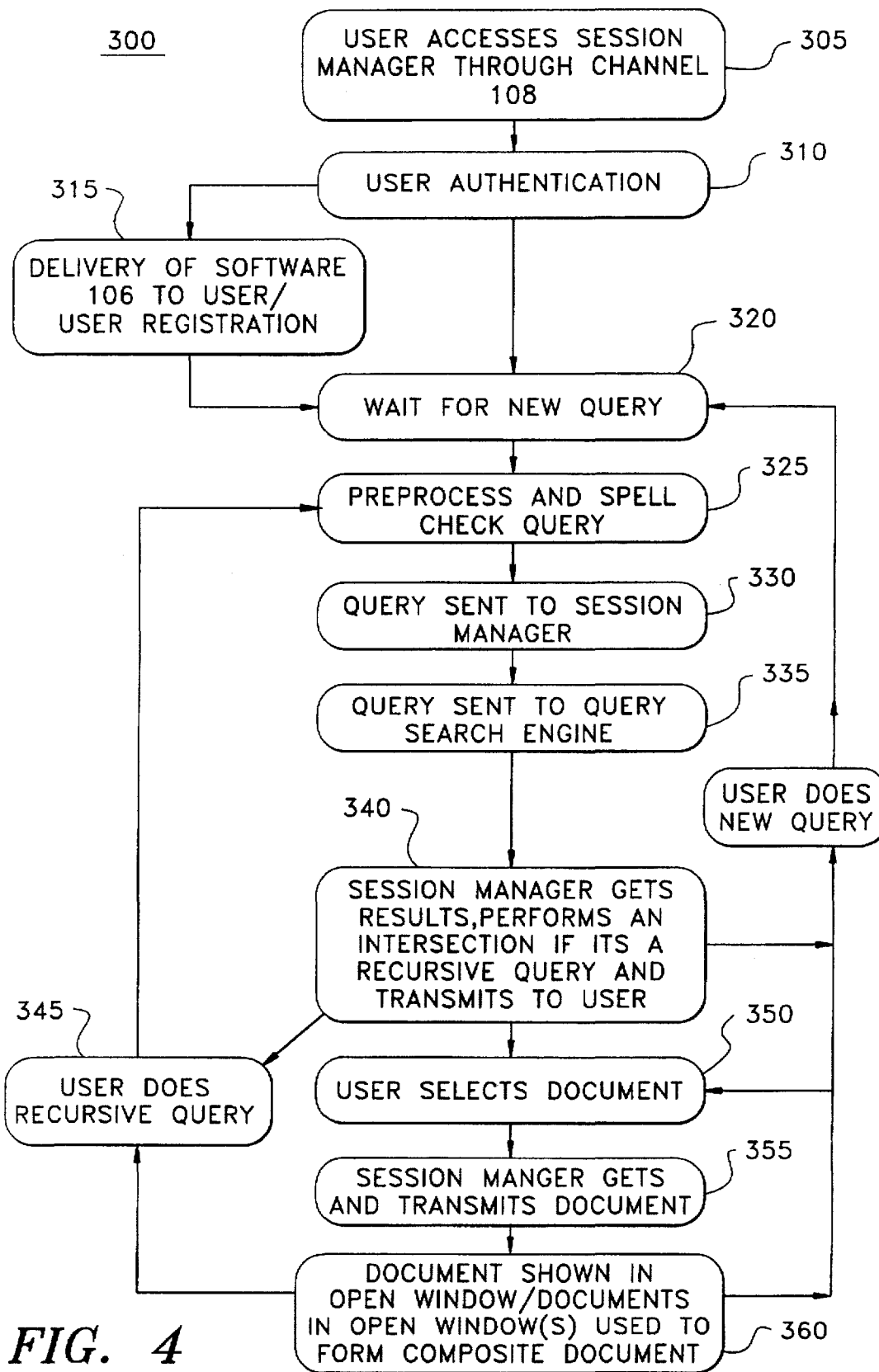


FIG. 4

Explore Litigation Insights

Docket Alarm provides insights to develop a more informed litigation strategy and the peace of mind of knowing you're on top of things.

Real-Time Litigation Alerts



Keep your litigation team up-to-date with **real-time alerts** and advanced team management tools built for the enterprise, all while greatly reducing PACER spend.

Our comprehensive service means we can handle Federal, State, and Administrative courts across the country.

Advanced Docket Research



With over 230 million records, Docket Alarm's cloud-native docket research platform finds what other services can't. Coverage includes Federal, State, plus PTAB, TTAB, ITC and NLRB decisions, all in one place.

Identify arguments that have been successful in the past with full text, pinpoint searching. Link to case law cited within any court document via Fastcase.

Analytics At Your Fingertips



Learn what happened the last time a particular judge, opposing counsel or company faced cases similar to yours.

Advanced out-of-the-box PTAB and TTAB analytics are always at your fingertips.

API

Docket Alarm offers a powerful API (application programming interface) to developers that want to integrate case filings into their apps.

LAW FIRMS

Build custom dashboards for your attorneys and clients with live data direct from the court.

Automate many repetitive legal tasks like conflict checks, document management, and marketing.

FINANCIAL INSTITUTIONS

Litigation and bankruptcy checks for companies and debtors.

E-DISCOVERY AND LEGAL VENDORS

Sync your system to PACER to automate legal marketing.