



[54] TOUCHSCREEN INTERFACE HAVING POP-UP VARIABLE ADJUSTMENT DISPLAYS FOR CONTROLLERS AND AUDIO PROCESSING SYSTEMS

Primary Examiner—Stanley J. Witkowski
Attorney, Agent, or Firm—Haynes & Davis

[75] Inventors: **Marcus K. Bryan, Jr.; Alexander J. Limberis; John S. Bowen**, all of San Jose; **Daniel A. Phillips**, Palo Alto, all of Calif.

[57] **ABSTRACT**

A touchscreen interface for a sound processing system, such as music synthesizers, which has a display panel and a touch sensitive panel overlying the display panel, includes an icon which represents an adjustable parameter used by the processing system. The processing resources supply a variable adjustment display to the display panel in response to a touch on the position of the icon, using pop-up slider or pop-up knob motif. The variable adjustment display overlies the interface display and has a size on the touch sensitive panel larger than the size of the icon to facilitate manipulation of the variable using a finger over a significant range of values. The variable adjustment display pops up when touched to obscure a portion of the graphical display used for the interface. When the variable is adjusted using the touch sequence, the variable adjustment display is removed, and the interface display is left unobscured. This allows the user to manipulate a particular variable while maintaining the window which shows the values of related variables on the screen. By maintaining the current window on the screen, the user is less likely to get lost in a hierarchy of windows used for setting variables.

[73] Assignee: **Korg, Inc.**, Tokyo, Japan

[21] Appl. No.: **306,365**

[22] Filed: **Sep. 15, 1994**

[51] Int. Cl.⁶ **G10H 1/057**; G10H 1/06; G10H 1/08; G10H 1/46

[52] U.S. Cl. **84/653**; 84/659; 84/660; 84/663; 84/665; 345/173; 395/159

[58] Field of Search 84/600, 615-620, 84/622-633, 653-665, 477 R, 478, 462; 345/173-178; 395/159

[56] **References Cited**

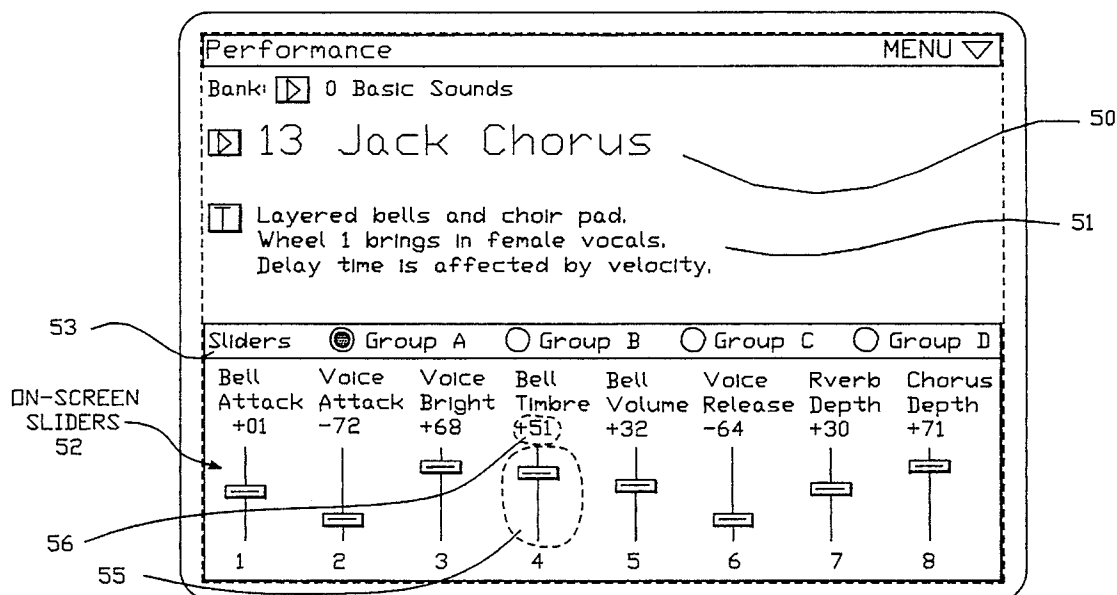
U.S. PATENT DOCUMENTS

- 5,027,689 7/1991 Fujimori 84/659 X
- 5,146,833 9/1992 Lui 84/477 R X
- 5,153,829 10/1992 Furuya et al. 84/477 R X

OTHER PUBLICATIONS

Rubine, et al., "Programmable Finger Tracking Instrument Controllers"; Computer Music Journal, vol. 14, No. 1, Spring, 1990.

44 Claims, 6 Drawing Sheets



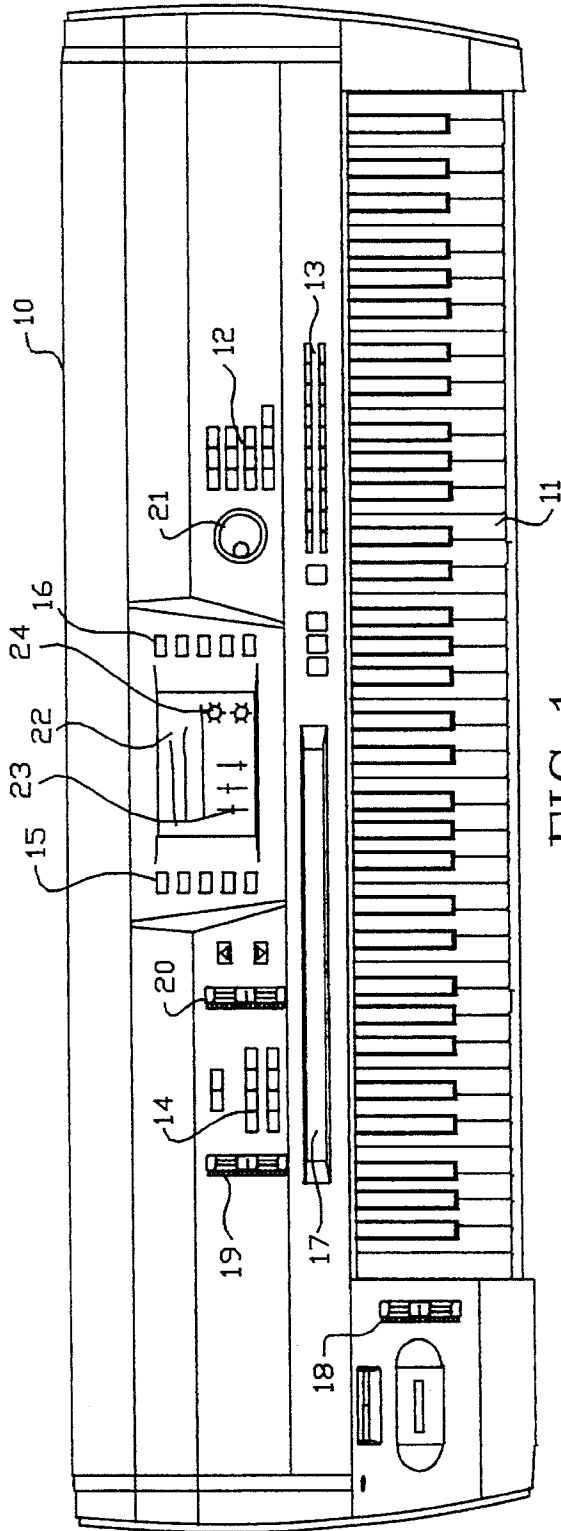


FIG. 1

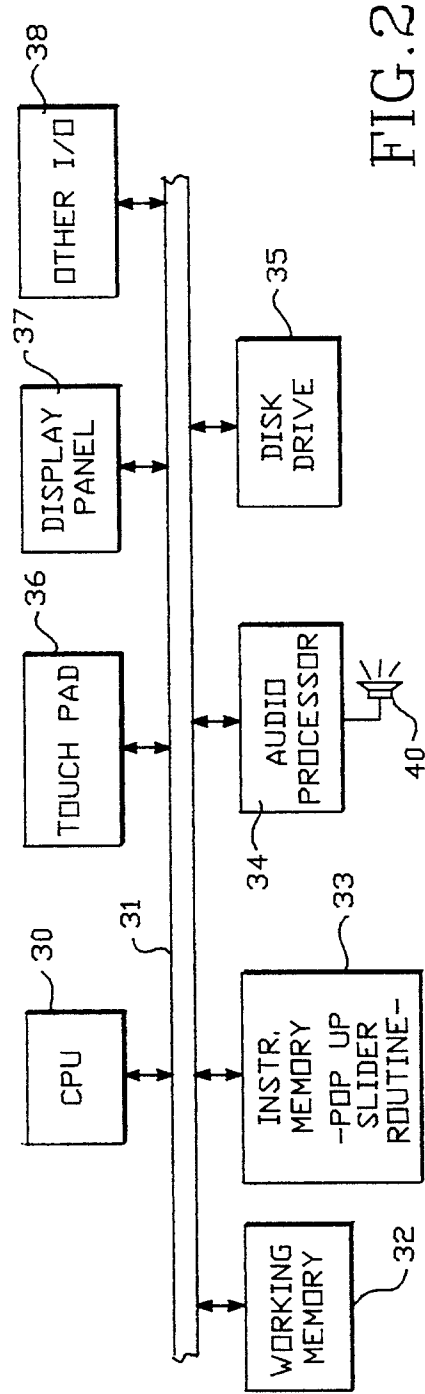


FIG. 2

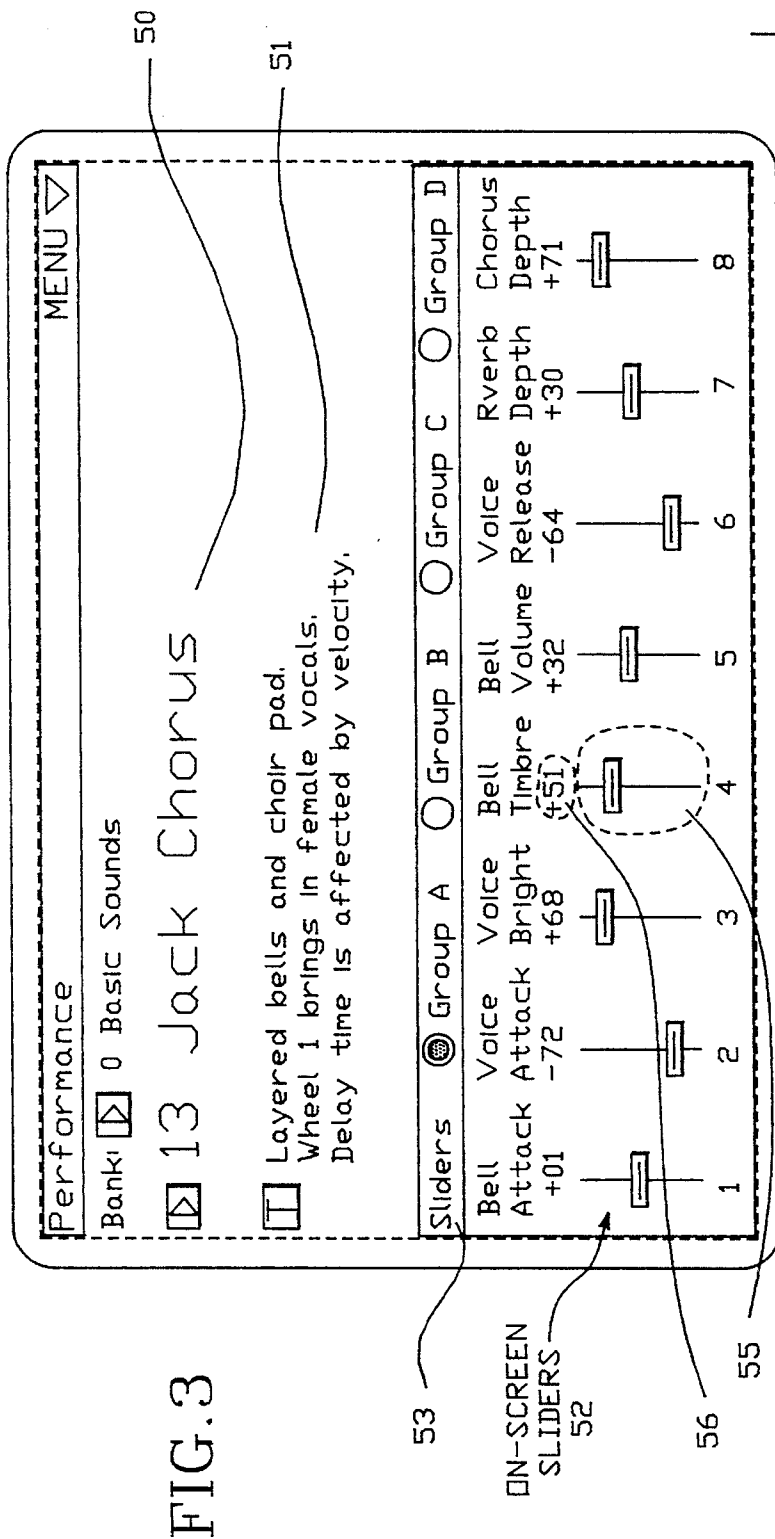


FIG. 3

ON-SCREEN SLIDERS

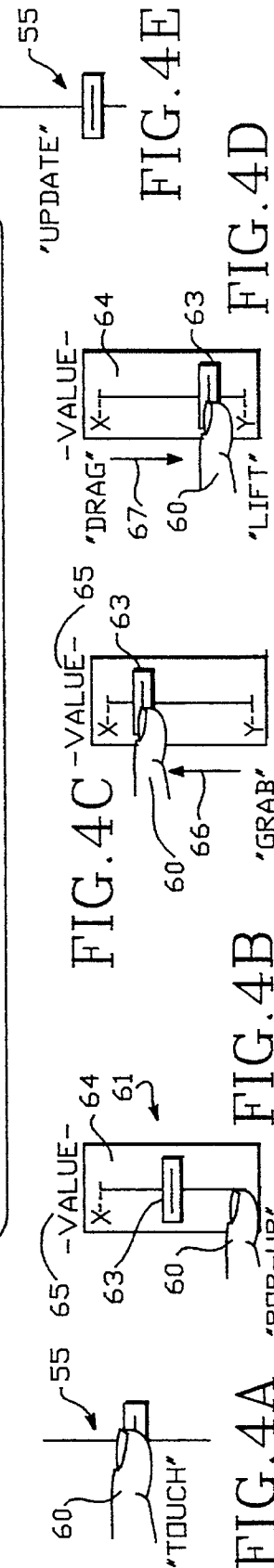


FIG. 4A 'TOUCH'

FIG. 4B 'POP-UP'

FIG. 4C 'DRAG'

FIG. 4D 'LIFT'

FIG. 4E 'UPDATE'

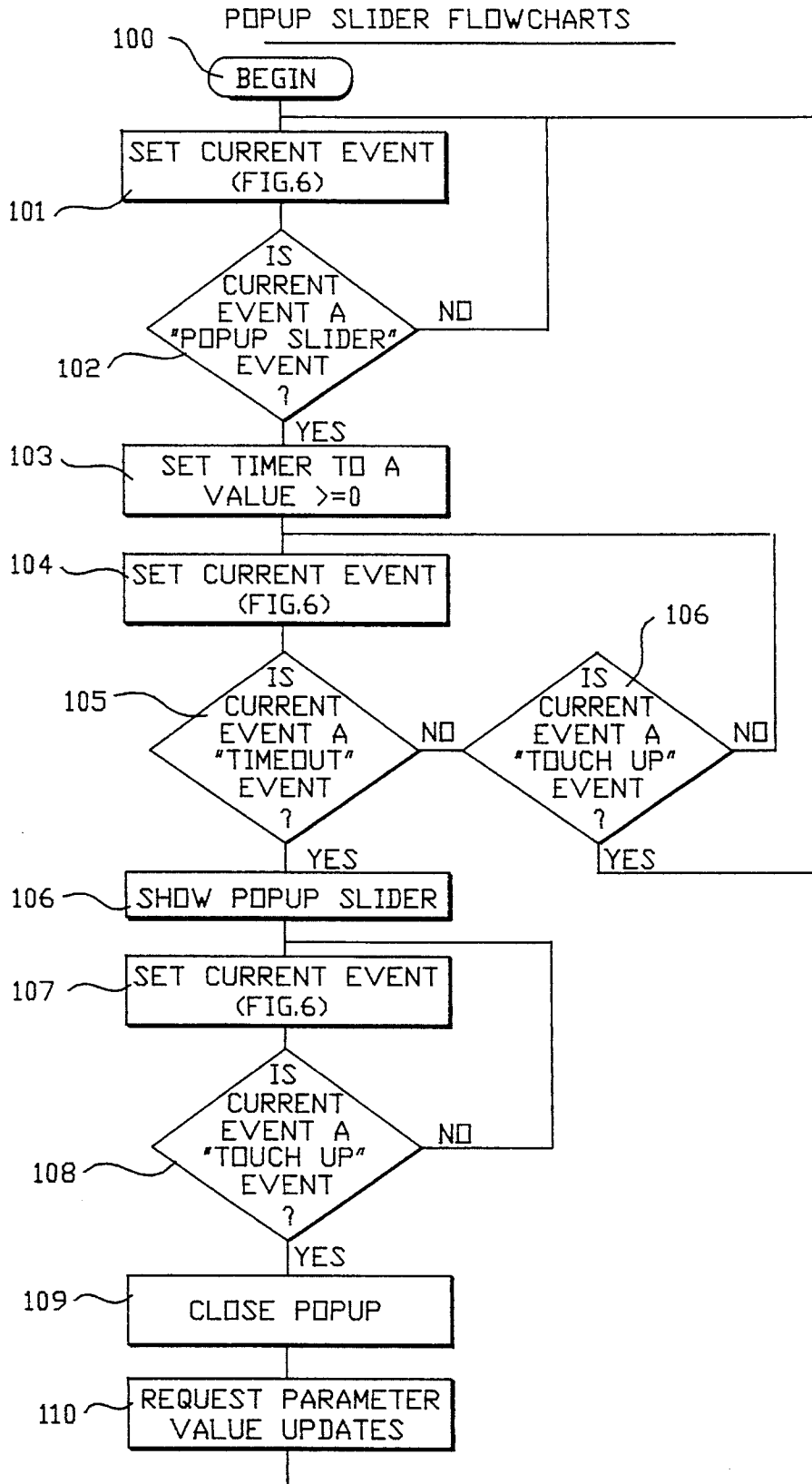


FIG.5

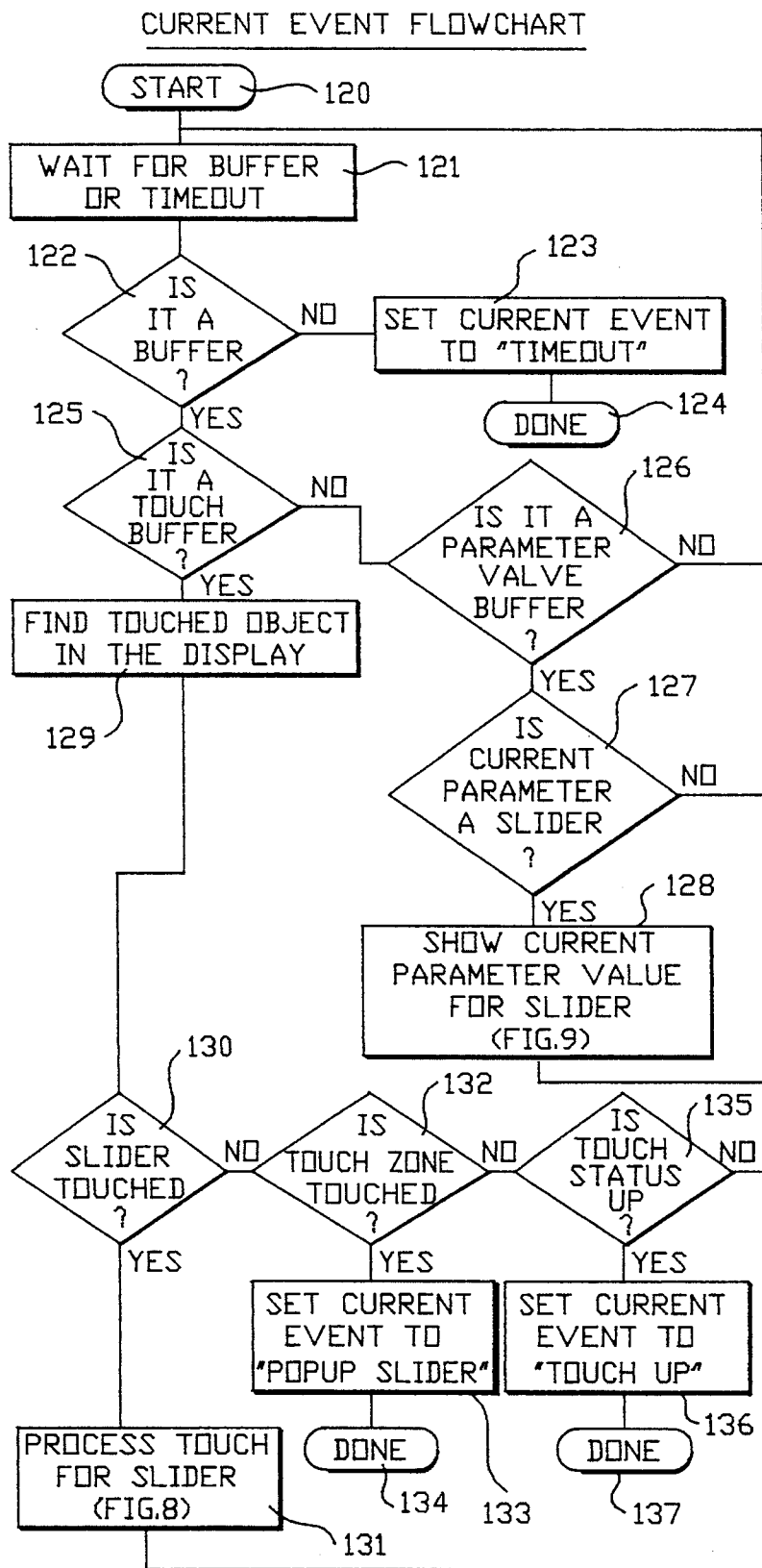


FIG. 6

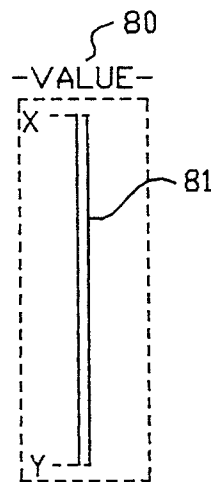


FIG. 7A

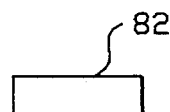


FIG. 7B

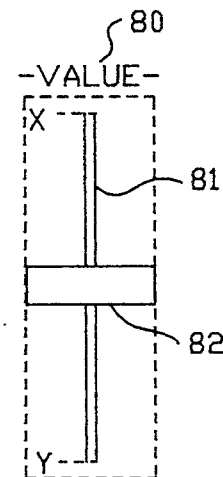


FIG. 7C

Explore Litigation Insights

Docket Alarm provides insights to develop a more informed litigation strategy and the peace of mind of knowing you're on top of things.

Real-Time Litigation Alerts



Keep your litigation team up-to-date with **real-time alerts** and advanced team management tools built for the enterprise, all while greatly reducing PACER spend.

Our comprehensive service means we can handle Federal, State, and Administrative courts across the country.

Advanced Docket Research



With over 230 million records, Docket Alarm's cloud-native docket research platform finds what other services can't. Coverage includes Federal, State, plus PTAB, TTAB, ITC and NLRB decisions, all in one place.

Identify arguments that have been successful in the past with full text, pinpoint searching. Link to case law cited within any court document via Fastcase.

Analytics At Your Fingertips



Learn what happened the last time a particular judge, opposing counsel or company faced cases similar to yours.

Advanced out-of-the-box PTAB and TTAB analytics are always at your fingertips.

API

Docket Alarm offers a powerful API (application programming interface) to developers that want to integrate case filings into their apps.

LAW FIRMS

Build custom dashboards for your attorneys and clients with live data direct from the court.

Automate many repetitive legal tasks like conflict checks, document management, and marketing.

FINANCIAL INSTITUTIONS

Litigation and bankruptcy checks for companies and debtors.

E-DISCOVERY AND LEGAL VENDORS

Sync your system to PACER to automate legal marketing.