

[54] CAMERA
[75] Inventors: Roger S. Van Heyningen, Rochester; Cynthia S. Bell, Webster; Paul L. Ruben, Penfield, all of N.Y.

[73] Assignee: Eastman Kodak Company, Rochester, N.Y.

[21] Appl. No.: 288,887

[22] Filed: Dec. 23, 1988

[51] Int. Cl.⁵ G03B 7/00

[52] U.S. Cl. 354/412; 358/224; 354/75

[58] Field of Search 354/412, 413, 416, 417, 354/429, 432, 402, 75, 76, 219; 358/225, 226, 909, 224

[56] References Cited

U.S. PATENT DOCUMENTS

3,714,442	1/1973	Frank	250/209
4,303,322	12/1981	Someya	354/31
4,330,797	5/1982	Yokokawa et al.	358/224
4,420,773	12/1983	Toyoda et al.	358/335

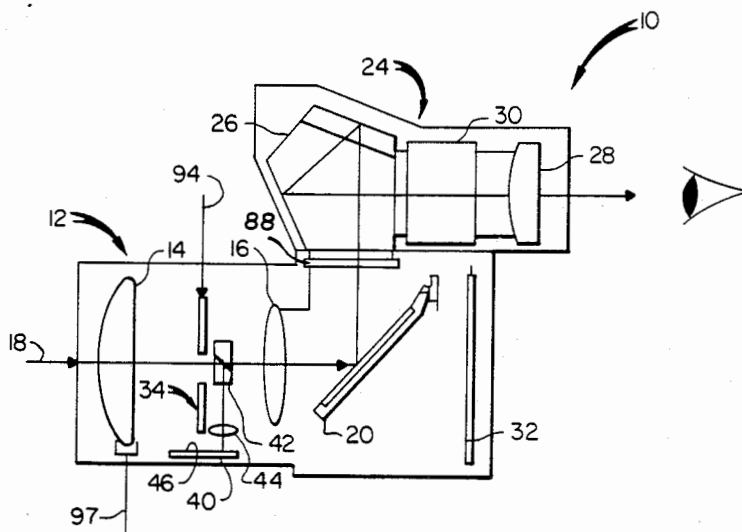
4,571,627	2/1986	Stempeck	358/224
4,694,151	9/1987	Yoshimura	354/402
4,714,962	12/1987	Levine	358/209
4,716,470	12/1987	Levine	358/256
4,717,959	1/1988	Isago	354/402
4,738,526	4/1988	Larish	354/412
4,742,369	5/1988	Ishii et al.	354/441
4,763,146	8/1988	Niikura	354/75
4,785,323	11/1988	Bell	354/443

Primary Examiner—Russell E. Adams
Attorney, Agent, or Firm—Donald D. Schaper

[57] ABSTRACT

A camera is disclosed which includes elements for recording an image on photographic film and a solid-state image sensor for recording an electronic image. In order to reduce the size and complexity of the camera and to improve the camera performance, the electronic and film recording functions of the camera are integrated. The solid-state image sensor is used both in controlling the recording of an image on film and in producing an electronic image.

10 Claims, 5 Drawing Sheets



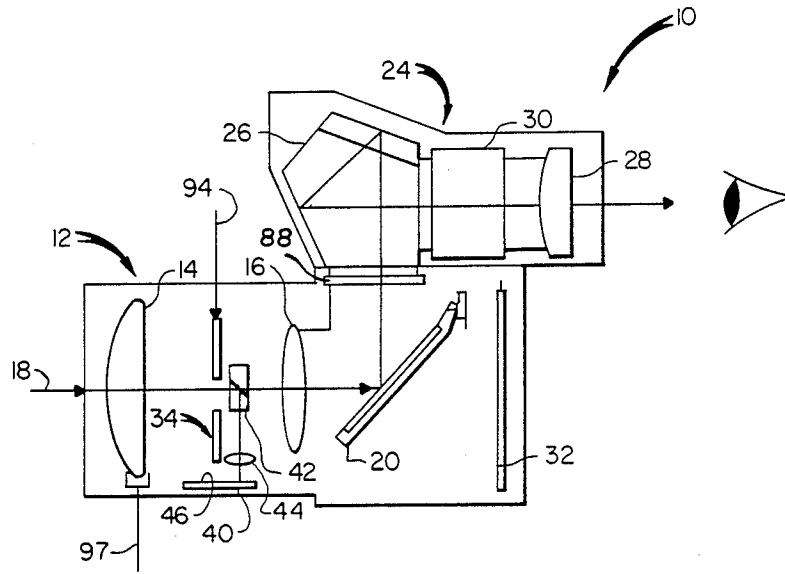


FIG. 1

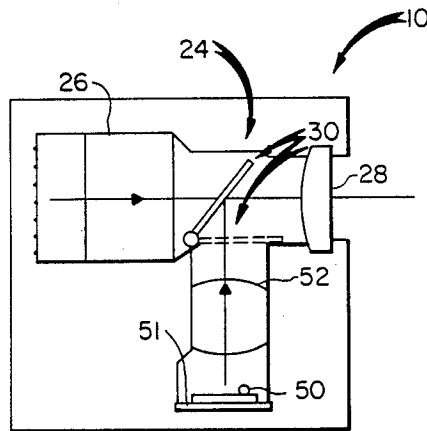


FIG. 2

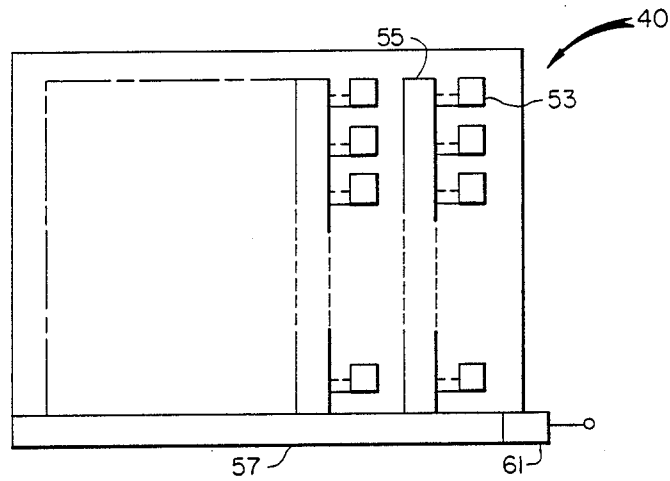


FIG. 3

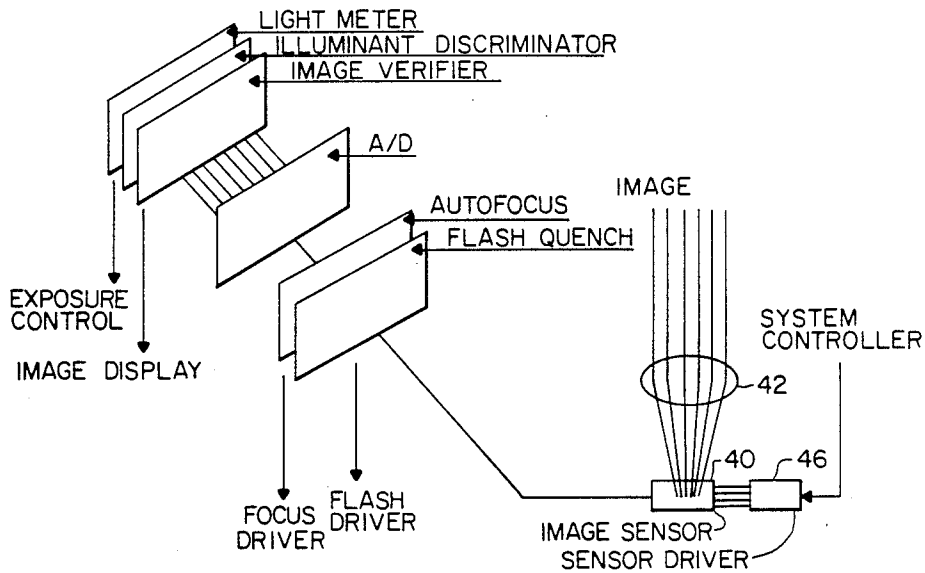


FIG. 4

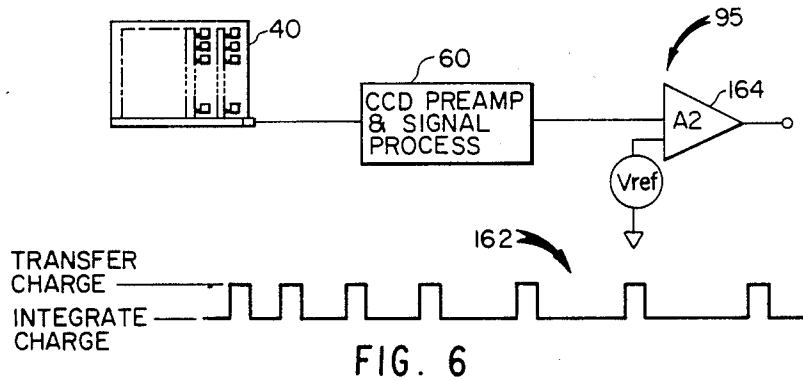


FIG. 6

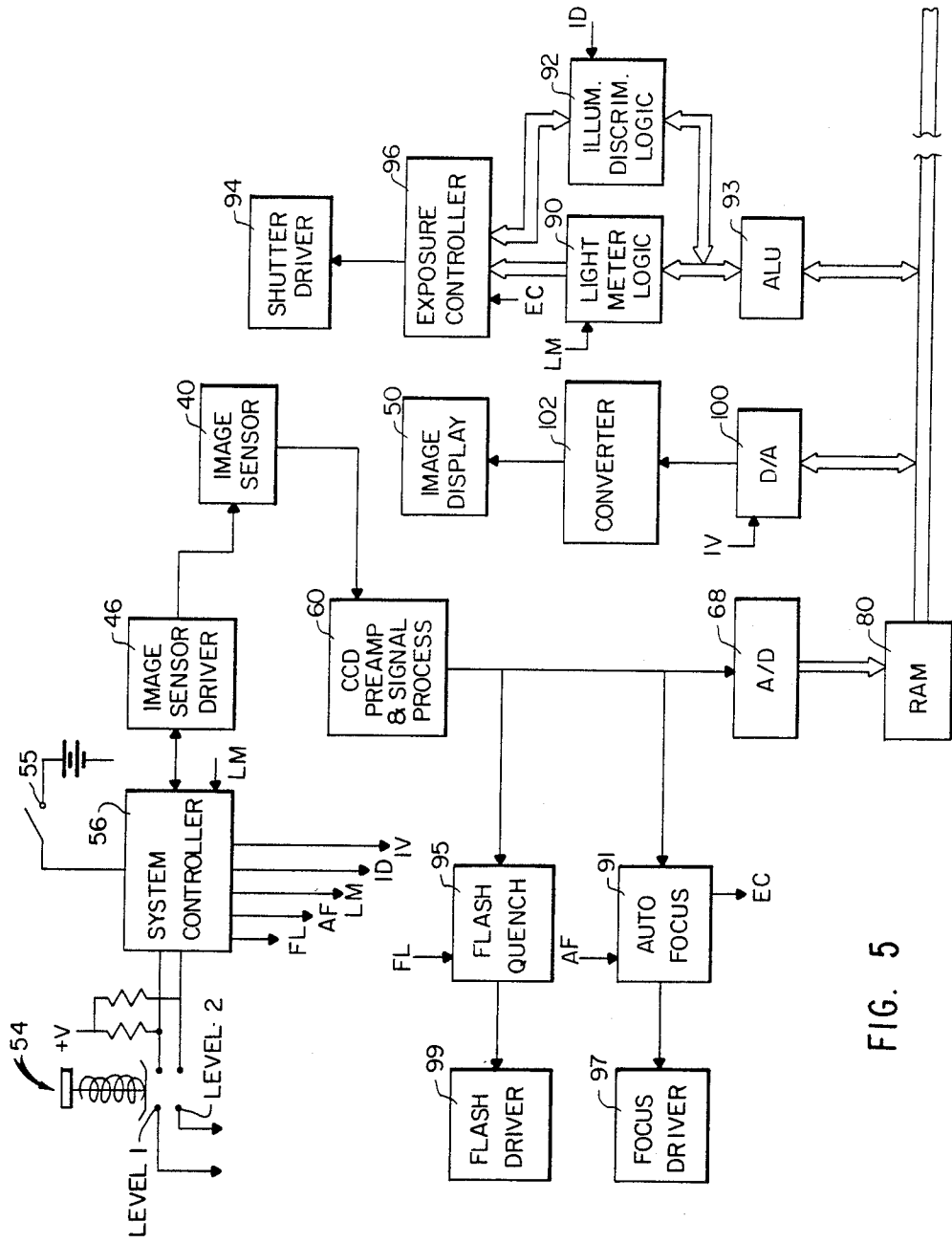


FIG. 5

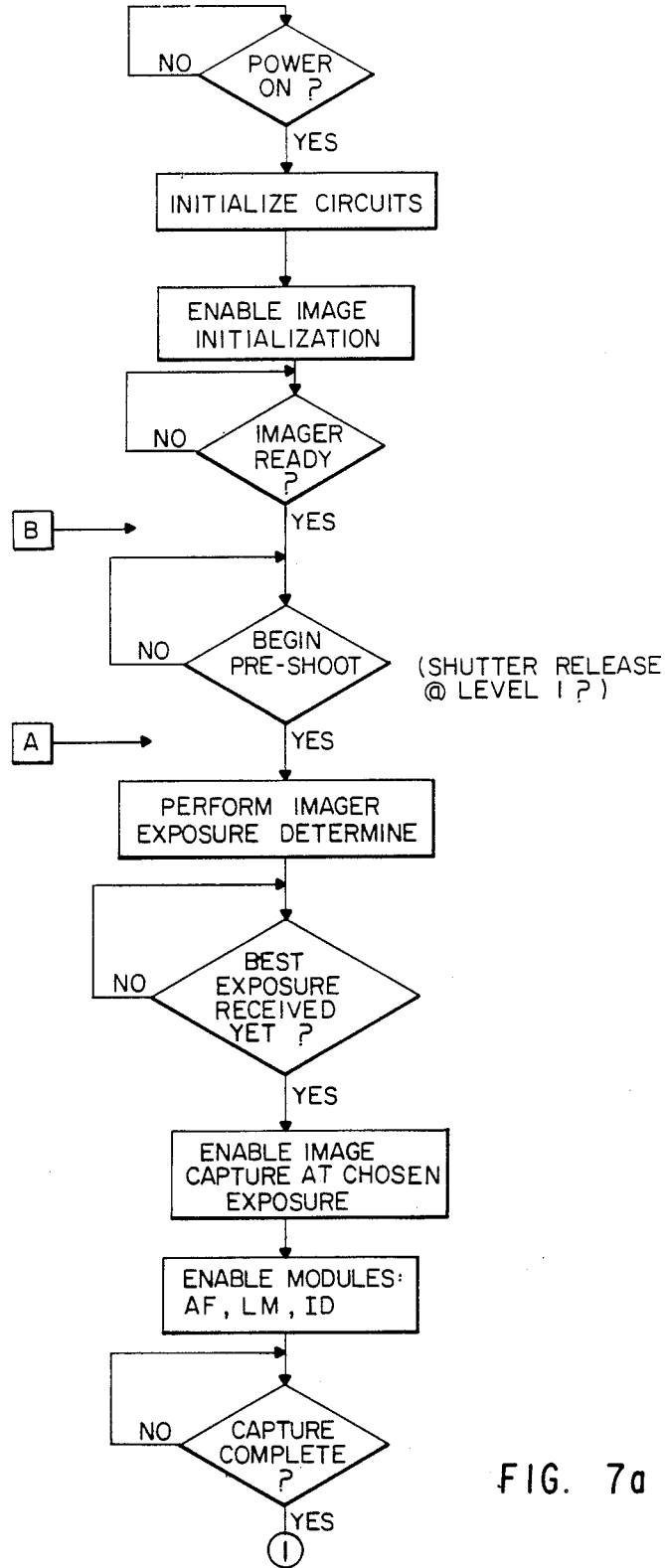


FIG. 7a

Explore Litigation Insights

Docket Alarm provides insights to develop a more informed litigation strategy and the peace of mind of knowing you're on top of things.

Real-Time Litigation Alerts



Keep your litigation team up-to-date with **real-time alerts** and advanced team management tools built for the enterprise, all while greatly reducing PACER spend.

Our comprehensive service means we can handle Federal, State, and Administrative courts across the country.

Advanced Docket Research



With over 230 million records, Docket Alarm's cloud-native docket research platform finds what other services can't. Coverage includes Federal, State, plus PTAB, TTAB, ITC and NLRB decisions, all in one place.

Identify arguments that have been successful in the past with full text, pinpoint searching. Link to case law cited within any court document via Fastcase.

Analytics At Your Fingertips



Learn what happened the last time a particular judge, opposing counsel or company faced cases similar to yours.

Advanced out-of-the-box PTAB and TTAB analytics are always at your fingertips.

API

Docket Alarm offers a powerful API (application programming interface) to developers that want to integrate case filings into their apps.

LAW FIRMS

Build custom dashboards for your attorneys and clients with live data direct from the court.

Automate many repetitive legal tasks like conflict checks, document management, and marketing.

FINANCIAL INSTITUTIONS

Litigation and bankruptcy checks for companies and debtors.

E-DISCOVERY AND LEGAL VENDORS

Sync your system to PACER to automate legal marketing.