

PCG#20

an Les Pins, France, 22 April 2008

G20_23

ATE CONTRIBUTION



MCC Activity Report

Source

Adrian Scrase

TM

A G L O B A L I N I T I A T I V E

Contents

- **Organizational Changes**
- **Resource Allocation**
- **Marketing and Communications**
- **Workload**
- **3GPP's Growing Membership**
- **3GPP Meeting Participation per Region**
- **IT Service at Working Group Meetings**TM
- **Outlook for 2008**

A GLOBAL INITIATIVE

Organizational Changes

Departures

There have been two departures since the last PCG meeting:

Maude Arzelier has left to work with an Individual member company (and so will still be involved in 3GPP activities).

Yohan Baev has also left to work with an Individual member company (and so will still be involved in 3GPP activities).



Organizational Changes

Arrivals

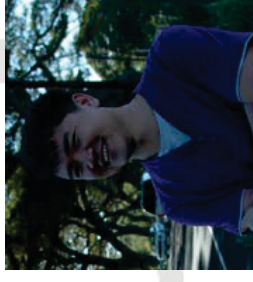
There have been four arrivals since the last PCG meeting:

Norm Krause has joined MCC to support RAN2 activities. (You may remember him since he has worked MCC before)

Who Chun has joined MCC to support CT3 and CT5 activities.

Kevin Flynn has joined MCC as 3GPP's Marketing and Communications Officer

Robert Sigovich will join MCC on 28 April to support 3GPP N5 and GERAN3



Organizational Changes

Vacancies

There is one open call for a Core Network expert to join MCC:
The call can be found on the 3GPP home page at
http://www.3gpp.org/Support/CL08_2620.doc
Finding a good candidature is essential so please distribute the call
widely.



Explore Litigation Insights

Docket Alarm provides insights to develop a more informed litigation strategy and the peace of mind of knowing you're on top of things.

Real-Time Litigation Alerts



Keep your litigation team up-to-date with **real-time alerts** and advanced team management tools built for the enterprise, all while greatly reducing PACER spend.

Our comprehensive service means we can handle Federal, State, and Administrative courts across the country.

Advanced Docket Research



With over 230 million records, Docket Alarm's cloud-native docket research platform finds what other services can't. Coverage includes Federal, State, plus PTAB, TTAB, ITC and NLRB decisions, all in one place.

Identify arguments that have been successful in the past with full text, pinpoint searching. Link to case law cited within any court document via Fastcase.

Analytics At Your Fingertips



Learn what happened the last time a particular judge, opposing counsel or company faced cases similar to yours.

Advanced out-of-the-box PTAB and TTAB analytics are always at your fingertips.

API

Docket Alarm offers a powerful API (application programming interface) to developers that want to integrate case filings into their apps.

LAW FIRMS

Build custom dashboards for your attorneys and clients with live data direct from the court.

Automate many repetitive legal tasks like conflict checks, document management, and marketing.

FINANCIAL INSTITUTIONS

Litigation and bankruptcy checks for companies and debtors.

E-DISCOVERY AND LEGAL VENDORS

Sync your system to PACER to automate legal marketing.