

- [54] SIGNAL DIVERSITY ARRANGEMENT FOR MOBILE RECEPTION
- [75] Inventors: Karl-Heinz G. Lindenmeier, Planegg; Gerhard Flachenecker, Ottobrunn, both of Fed. Rep. of Germany
- [73] Assignee: U.S. Philips Corporation, New York, N.Y.
- [21] Appl. No.: 127,827
- [22] Filed: Dec. 1, 1987
- [30] Foreign Application Priority Data
Dec. 2, 1986 [DE] Fed. Rep. of Germany 3641109
- [51] Int. Cl.⁴ H04B 11/16
- [52] U.S. Cl. 455/133; 455/135; 455/275; 455/278
- [58] Field of Search 455/132-135, 455/50, 272, 275, 276, 278, 296, 303; 375/100; 370/95, 100, 110.1

[56] References Cited

U.S. PATENT DOCUMENTS

4,498,885	2/1985	Namiki	455/278
4,512,034	4/1985	Greenstein et al.	455/278
4,578,819	3/1986	Shimizu	455/135
4,736,455	4/1988	Matsue et al.	455/278
4,742,568	5/1988	Furuya	455/135
4,756,023	7/1988	Kojima	455/134

OTHER PUBLICATIONS

"NTG Fachbrichte Band 72", p. 241, 3/80.

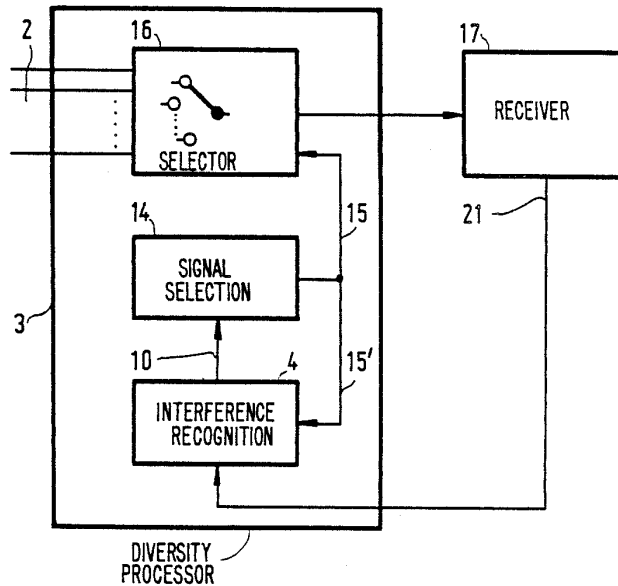
Primary Examiner—Robert L. Griffin
Assistant Examiner—Curtis Kuntz

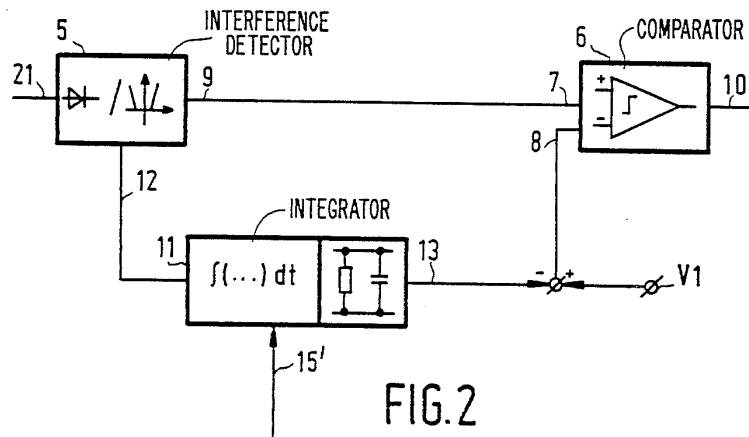
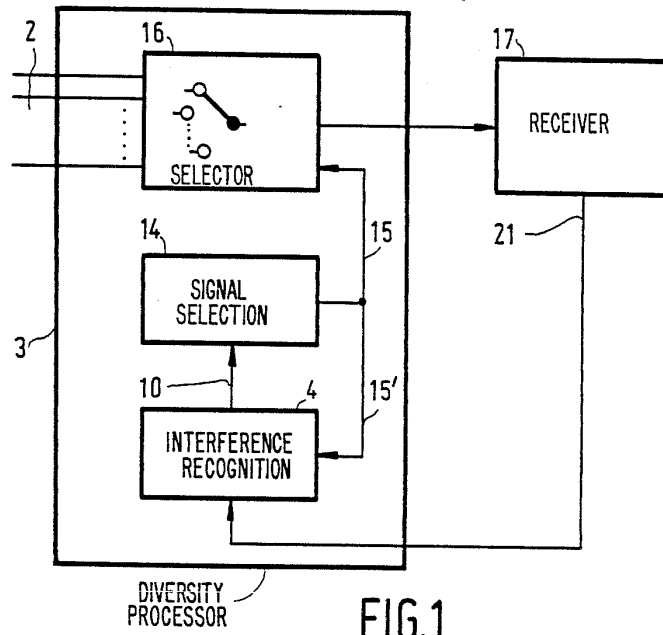
Attorney, Agent, or Firm—David R. Treacy

[57] ABSTRACT

The invention relates to a signal diversity arrangement for a mobile reception, comprising a receiver and a diversity processor, which receives the input signals and applies a different input signal to the receiver when interference occurs. The diversity processor comprises an interference detector operating in the analog mode and a comparator, to whose first input is applied the output signal of the interference detector and to whose second input is applied a suitably set voltage V1. The comparator shows on its output the occurrence of interference by way of a binary signal when the threshold voltage V at the second input is exceeded. No less than one integrator is available having a discharging time constant, to whose input is applied a signal derived from the interference signal and whose time of integration is equal to the switching interval of one of the input signals and whose output signal is added to either the interference signal at the first comparator input such that when the interference is increased the total voltage at the first input of the comparator is increased also, or the output signal is applied to the second comparator input such that the threshold voltage is lowered when the interference rises. In the case of a series of integrators whose inputs each receive a signal derived from the interference signal of the associated input signal, the output signals of these integrators are each time applied to one of the comparator inputs and the threshold voltage V is changed each time in accordance with the interference signal during the switching interval.

12 Claims, 4 Drawing Sheets





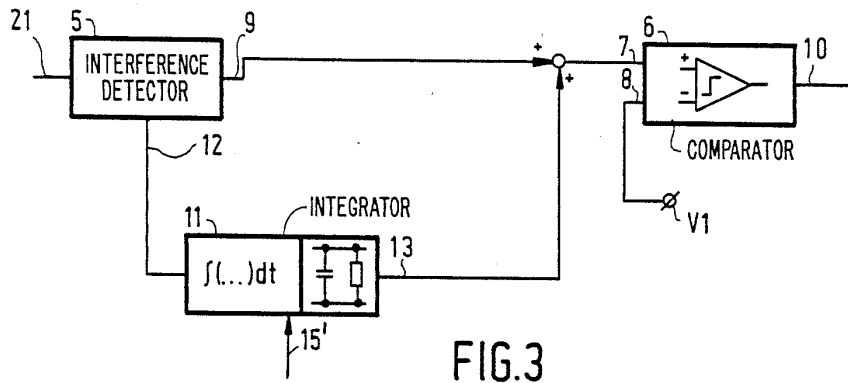


FIG. 3

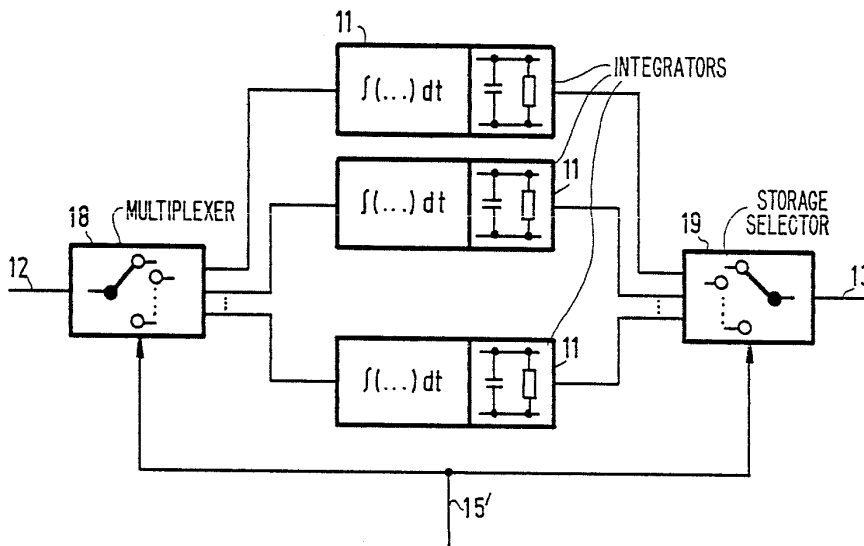


FIG. 4

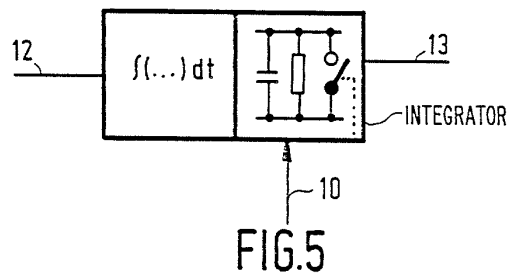


FIG. 5

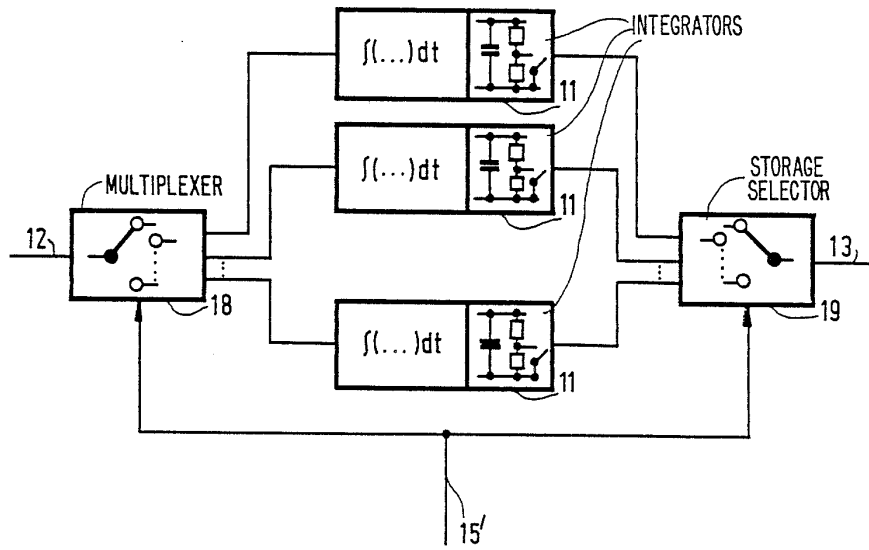


FIG.8

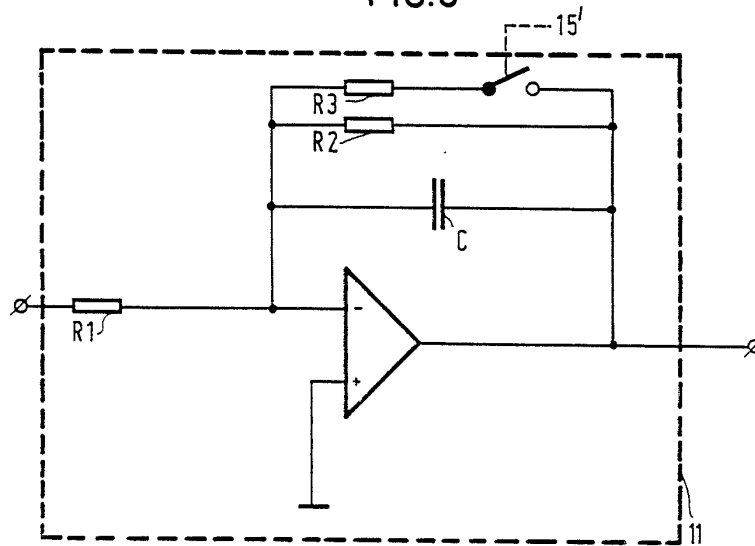


FIG.9

Explore Litigation Insights

Docket Alarm provides insights to develop a more informed litigation strategy and the peace of mind of knowing you're on top of things.

Real-Time Litigation Alerts



Keep your litigation team up-to-date with **real-time alerts** and advanced team management tools built for the enterprise, all while greatly reducing PACER spend.

Our comprehensive service means we can handle Federal, State, and Administrative courts across the country.

Advanced Docket Research



With over 230 million records, Docket Alarm's cloud-native docket research platform finds what other services can't. Coverage includes Federal, State, plus PTAB, TTAB, ITC and NLRB decisions, all in one place.

Identify arguments that have been successful in the past with full text, pinpoint searching. Link to case law cited within any court document via Fastcase.

Analytics At Your Fingertips



Learn what happened the last time a particular judge, opposing counsel or company faced cases similar to yours.

Advanced out-of-the-box PTAB and TTAB analytics are always at your fingertips.

API

Docket Alarm offers a powerful API (application programming interface) to developers that want to integrate case filings into their apps.

LAW FIRMS

Build custom dashboards for your attorneys and clients with live data direct from the court.

Automate many repetitive legal tasks like conflict checks, document management, and marketing.

FINANCIAL INSTITUTIONS

Litigation and bankruptcy checks for companies and debtors.

E-DISCOVERY AND LEGAL VENDORS

Sync your system to PACER to automate legal marketing.