

- |   |  |                                      |  |                          |
|---|--|--------------------------------------|--|--------------------------|
| [54] <b>METHOD AND APPARATUS FOR CONTROLLING A POWER LEVEL OF A BASE STATION OF A WIRELESS COMMUNICATION SYSTEM</b> | 5,003,619<br>5,239,667<br>5,245,629<br>5,386,589 | 3/1991<br>8/1993<br>9/1993<br>1/1995 | Morris et al. ....<br>Kanai .<br>Hall .<br>Kanai ..... | 455/69<br><br><br>455/69 |
|---|--|--------------------------------------|--|--------------------------|

**OTHER PUBLICATIONS**

[75] Inventors: **John D. Reed**, Arlington; **Walter J. Rozanski, Jr.**, Hurst, both of Tex.

Microwave Mobile Communications, Edited by William C. Jakes, Jr., A Wiley-Interscience Publication, 1974.

[73] Assignee: **Motorola, Inc.**, Schaumburg, Ill.

*Primary Examiner*—Andrew Faile

*Assistant Examiner*—Doris To

*Attorney, Agent, or Firm*—Richard A. Sonnentag

[21] Appl. No.: **354,297**

[22] Filed: **Dec. 13, 1994**

[57] **ABSTRACT**

**Related U.S. Application Data**

[63] Continuation-in-part of Ser. No. 16,446, Feb. 11, 1993, abandoned.

[51] **Int. Cl.<sup>6</sup>** ..... **H04B 7/00**

[52] **U.S. Cl.** ..... **455/69; 455/52.1; 455/56.1; 455/63; 455/67.1**

[58] **Field of Search** ..... 455/69, 70, 52.1, 455/52.3, 65, 54.1, 54.2, 67.1, 89, 83, 67.6, 67.4, 63, 127, 226.1, 226.2, 226.3

After setting a base station to a transmit power level (12) which provides a signal at a subscriber unit having a target quality level, a fading characteristic of a communication channel between the subscriber unit and a base site is measured (13). The fading characteristic is then compared with a threshold value (14). The measuring (13) and comparing (14) are repeated until the fading characteristic crosses a threshold (15). Once the fading characteristic crosses the threshold for a receive Eb/No level that is representative of a e.g. static fading condition, the base transmit power that is transmitted to the subscriber is increased by a predetermined amount in anticipation of the need for an increased Eb/No for the case of a faded signal (61). The determination of the fading characteristic and threshold comparison may be performed at either the subscriber unit or the base station.

[56] **References Cited**

**U.S. PATENT DOCUMENTS**

- |           |         |                          |
|-----------|---------|--------------------------|
| 3,940,695 | 2/1976  | Sickles, II .            |
| 4,228,538 | 10/1980 | Scharla-Nielsen et al. . |
| 4,580,262 | 4/1986  | Naylor et al. .          |
| 4,777,653 | 10/1988 | Bonnerot et al. .        |
| 4,901,307 | 2/1990  | Gilhausen et al. .       |

**7 Claims, 4 Drawing Sheets**

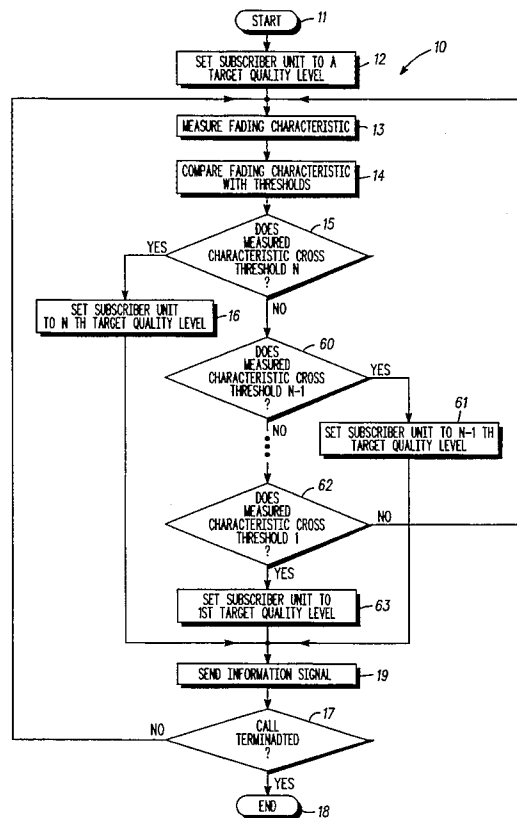
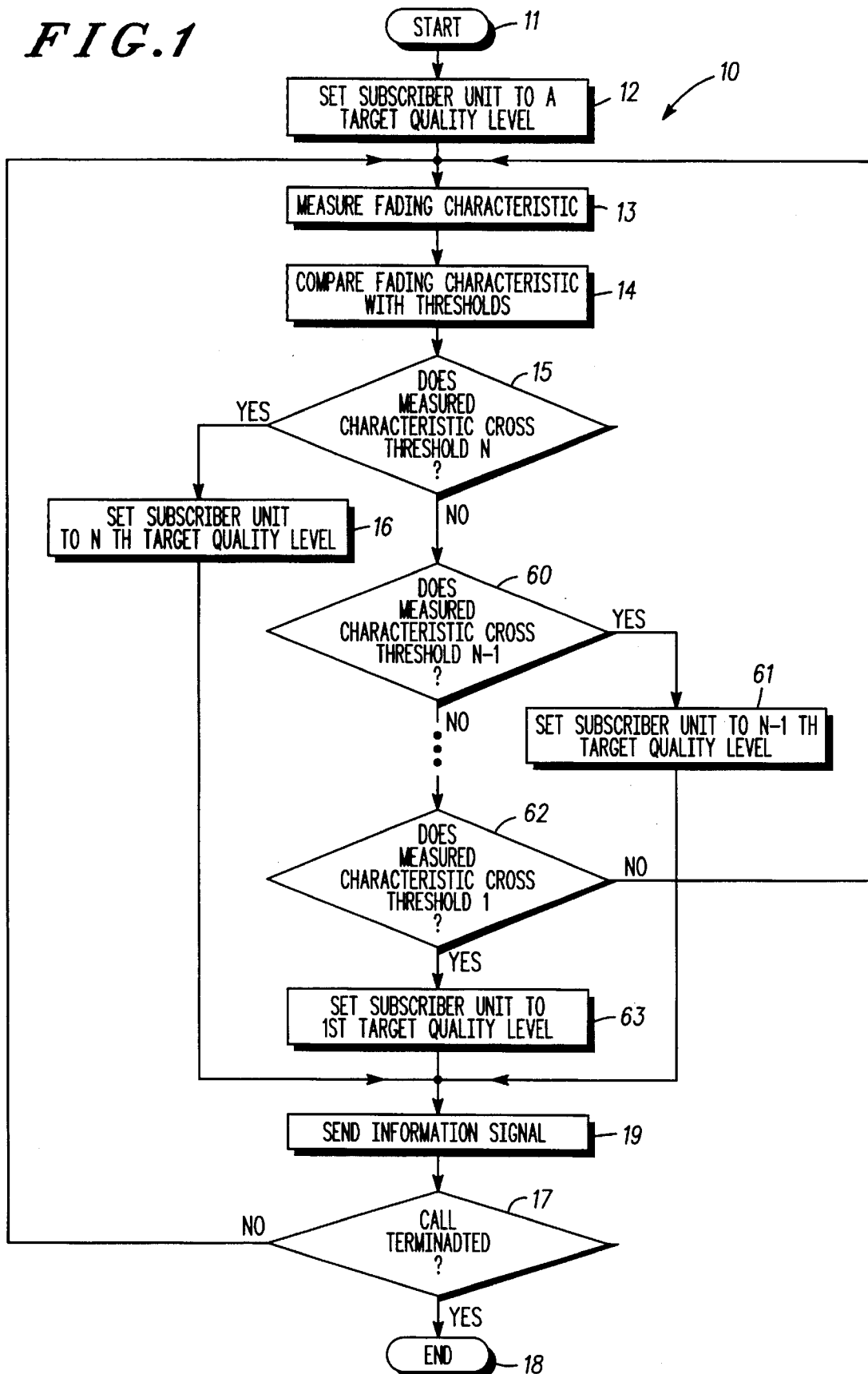
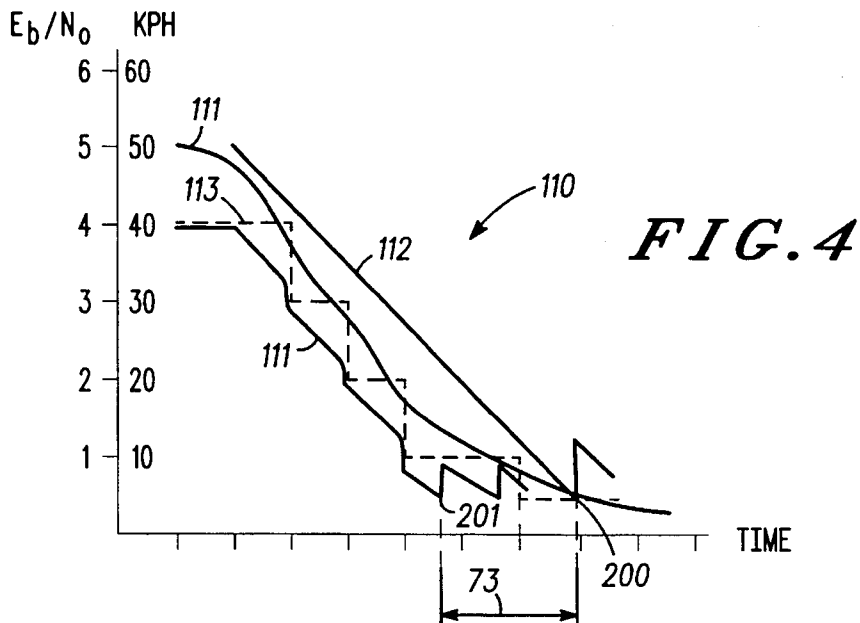
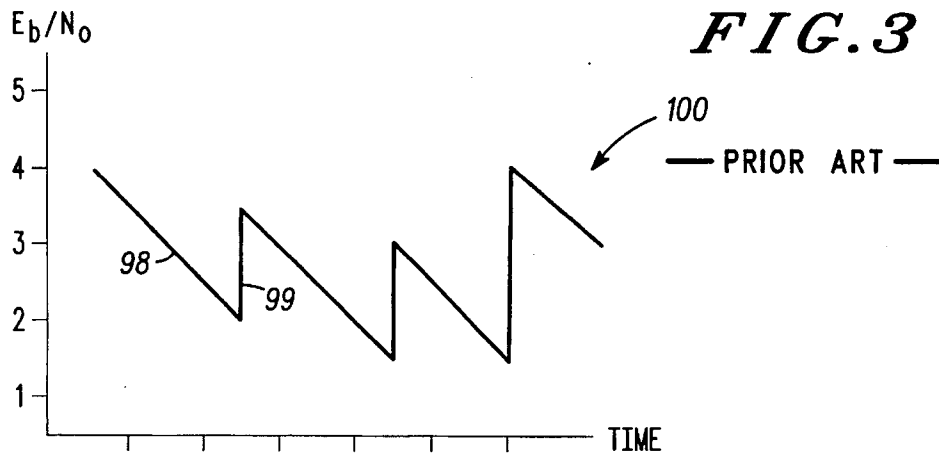
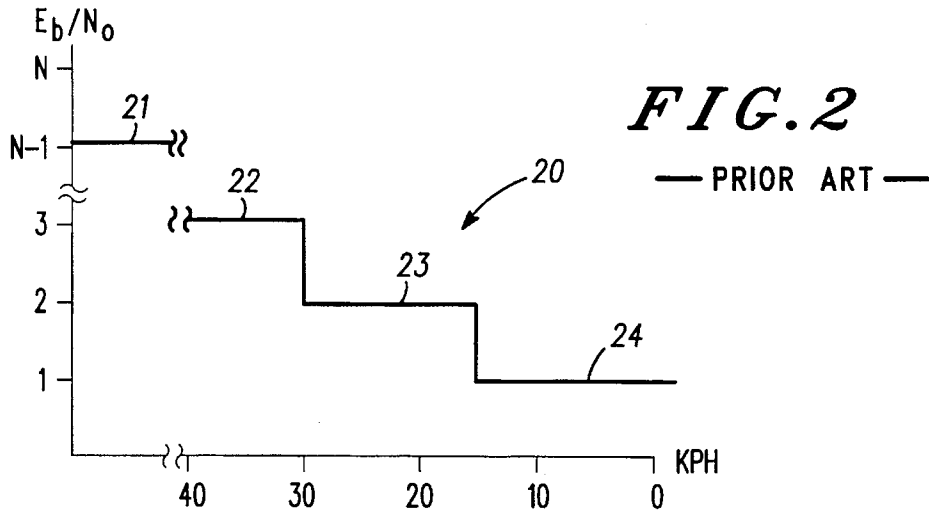
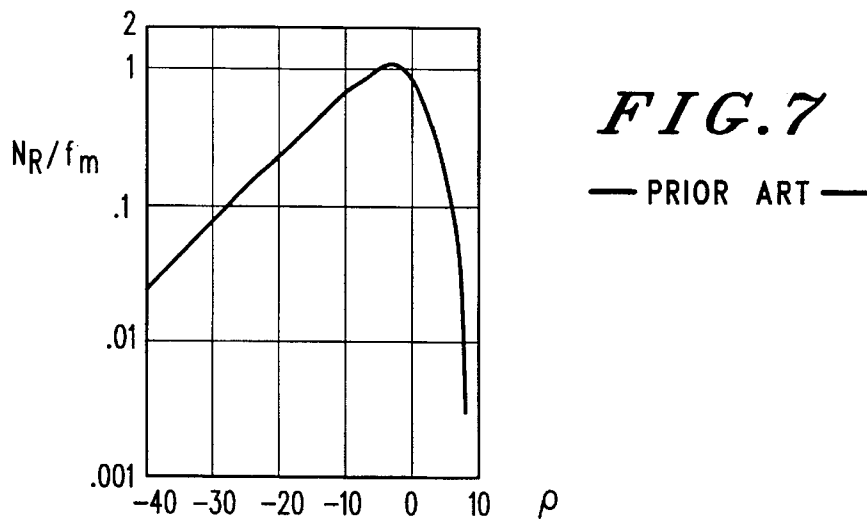
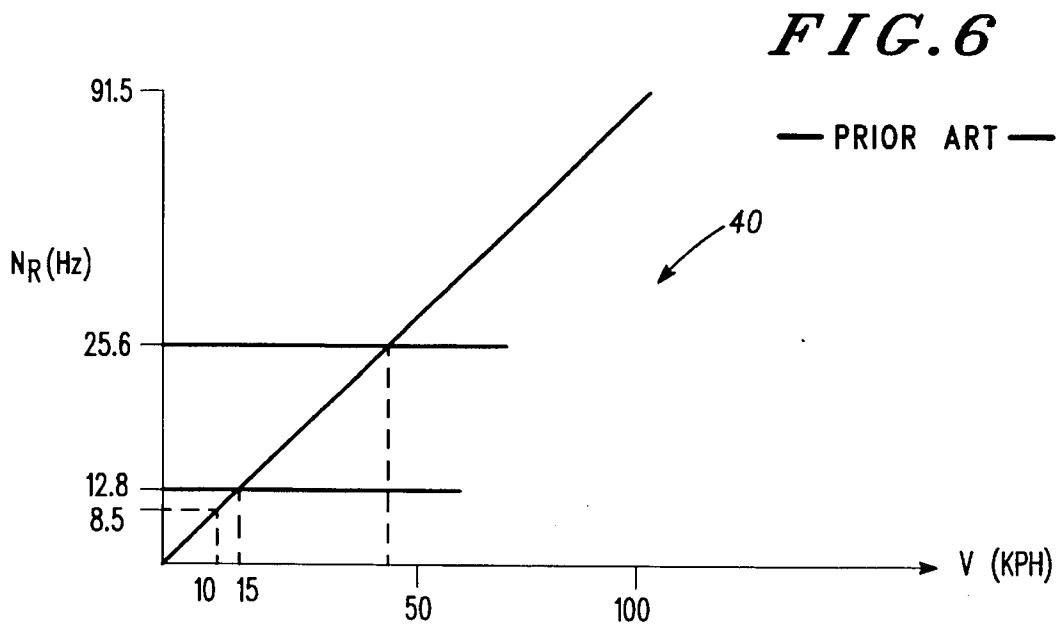
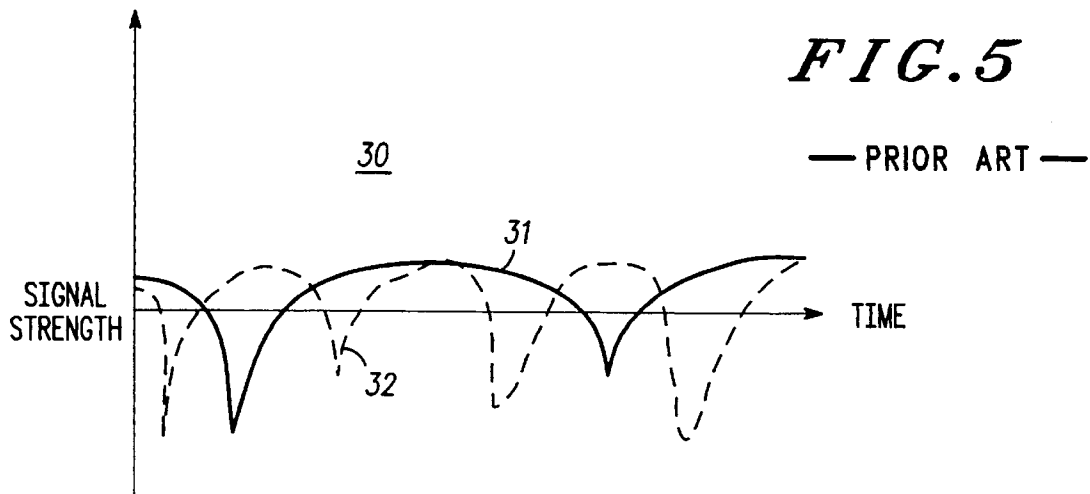
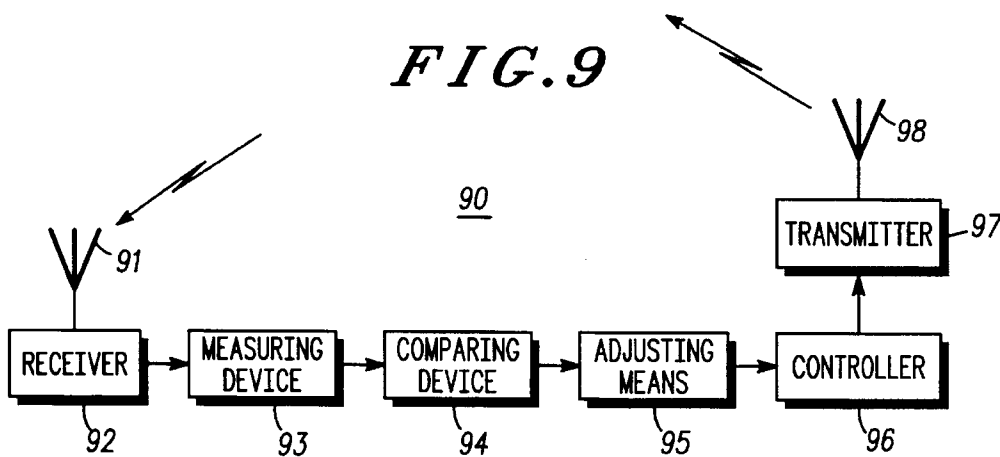
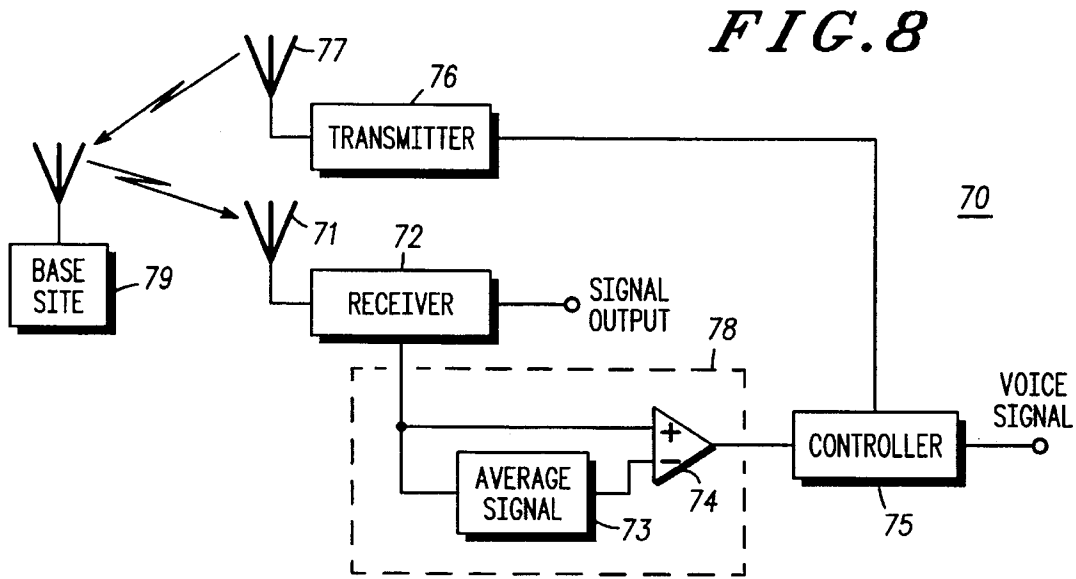


FIG. 1









# Explore Litigation Insights

Docket Alarm provides insights to develop a more informed litigation strategy and the peace of mind of knowing you're on top of things.

## Real-Time Litigation Alerts



Keep your litigation team up-to-date with **real-time alerts** and advanced team management tools built for the enterprise, all while greatly reducing PACER spend.

Our comprehensive service means we can handle Federal, State, and Administrative courts across the country.

## Advanced Docket Research



With over 230 million records, Docket Alarm's cloud-native docket research platform finds what other services can't. Coverage includes Federal, State, plus PTAB, TTAB, ITC and NLRB decisions, all in one place.

Identify arguments that have been successful in the past with full text, pinpoint searching. Link to case law cited within any court document via Fastcase.

## Analytics At Your Fingertips



Learn what happened the last time a particular judge, opposing counsel or company faced cases similar to yours.

Advanced out-of-the-box PTAB and TTAB analytics are always at your fingertips.

## API

Docket Alarm offers a powerful API (application programming interface) to developers that want to integrate case filings into their apps.

## LAW FIRMS

Build custom dashboards for your attorneys and clients with live data direct from the court.

Automate many repetitive legal tasks like conflict checks, document management, and marketing.

## FINANCIAL INSTITUTIONS

Litigation and bankruptcy checks for companies and debtors.

## E-DISCOVERY AND LEGAL VENDORS

Sync your system to PACER to automate legal marketing.