

Visit the JACI home page  
 www.mosby.com/jaci to receive  
 Tables of Content by e-mail!

VOLUME 104 NO. 3 PART 1

SEPTEMBER 1999

# THE JOURNAL OF Allergy AND Clinical Immunology

**CURRENT REVIEWS  
 OF ALLERGY AND CLINICAL  
 IMMUNOLOGY**

**Airway remodeling and  
 persistent obstruction in  
 asthma**

**MOLECULAR MECHANISMS  
 IN ALLERGY AND CLINICAL  
 IMMUNOLOGY**

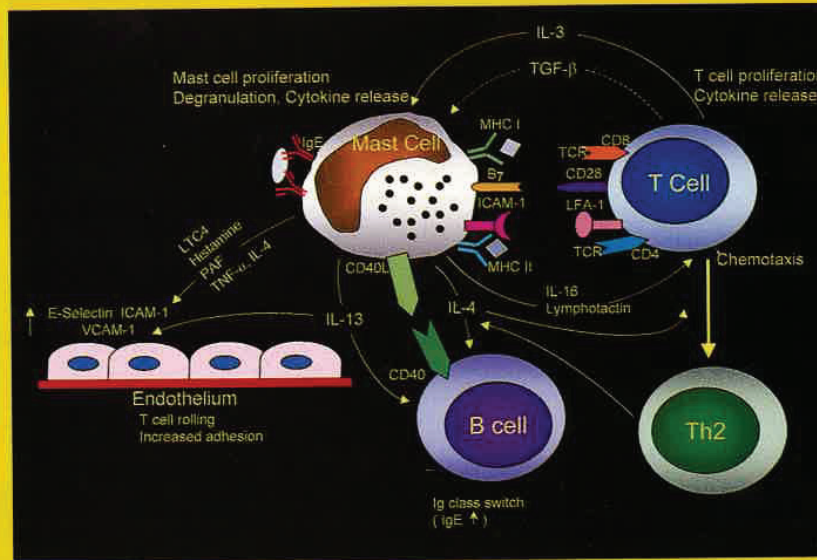
**Mast cell-T cell interactions**

**EDITORIALS**

**New understanding of  
 disease mechanisms:  
 Excitement and caution**

**Beyond breast-feeding**

**Balance in asthma between  
 matrix metalloproteinases  
 and their inhibitors**



**Mast cell-T cell interactions**  
 (a detailed explanation of the figure appears on page 13A)

OFFICIAL JOURNAL OF



AMERICAN ACADEMY OF ALLERGY  
 ASTHMA & IMMUNOLOGY

Published Monthly by  
**Mosby**  
 ISSN 0091-6749

WESTON LIBRARY  
 OCT 04 1999  
 J5/120 CLINICAL SCIENCES CENTER  
 600 HIGHLAND AV-MADISON, WI 53732

# THE JOURNAL OF Allergy AND Clinical Immunology

Contents

VOLUME 104

NUMBER 3, PART 1



OFFICIAL JOURNAL OF THE AMERICAN ACADEMY OF ALLERGY, ASTHMA AND IMMUNOLOGY

- The editors' choice** 507  
*Donald Y. M. Leung, MD, PhD, Harold S. Nelson, MD, and Stanley J. Szefler, MD*
- Current reviews of allergy and clinical immunology**
- Airway remodeling and persistent airway obstruction in asthma 509  
*James E. Fish, MD, and Stephen P. Peters, MD, PhD, Philadelphia, Pa*
- Molecular mechanisms in allergy and clinical immunology**
- Mast cell-T cell interactions 517  
*Yoseph A. Mekori, MD, and Dean D. Metcalfe, MD, Kfar-Saba, Israel, and Bethesda, Md*
- Editorials**
- New understanding of disease mechanisms: Excitement and caution 524  
*David A. Stempel, MD, Seattle, Wash*
- Beyond breast-feeding 526  
*Jennifer K. Peat, PhD, Jane Allen, PhD, and Wendy Oddy, MPH, Westmead and West Perth, Australia*
- Balance in asthma between matrix metalloproteinases and their inhibitors 530  
*Gisèle Mautino, PhD, Françoise Capony, PhD, Jean Bousquet, MD, and Antonio M. Vignola, MD, Montpellier, France, and Palermo, Italy*
- Rostrum**
- Allergic rhinobronchitis: The asthma-allergic rhinitis link 534  
*F. Estelle R. Simons, MD, FRCPC, Winnipeg, Manitoba, Canada*

Continued on page 7A

 **Mosby** Copyright © 1999 by Mosby, Inc.

Vol. 104, No. 3, Pt. 1, September 1999. The Journal of Allergy and Clinical Immunology (ISSN 0091-6749) is published monthly, except semimonthly in January (thirteen issues per year), by Mosby, Inc., 11830 Westline Industrial Dr., St. Louis, MO 63146-3318; phone 1 (800) 453-4351 or (314) 453-4351. Periodicals postage paid at St. Louis, Mo., and additional mailing offices. Postmaster: Send change of address to The Journal of Allergy and Clinical Immunology, 11830 Westline Industrial Dr., St. Louis, MO 63146-3318. Annual subscription rates effective through December 31, 1999: domestic, \$146.00.

**DOCKET  
ALARM**

Find authenticated court documents without watermarks at [docketalarm.com](http://docketalarm.com)

GSK Exhibit 1017 - Page 2 of 14

## Original articles

### *Asthma, rhinitis, other respiratory diseases*

- EC** Treatment of late-onset asthma with fluconazole 541  
*George W. Ward Jr, MD, Judith A. Woodfolk, MB, ChB, Mary L. Hayden, RN, MS, Sandra Jackson, RN, and Thomas A. E. Platts-Mills, MD, PhD, Charlottesville, Va*
- Montelukast versus salmeterol in patients with asthma and exercise-induced bronchoconstriction 547  
*Cesar Villaran, MD, Shane J. O'Neill, MD, FRCPI, Arthur Helbling, MD, Jan A. van Noord, MD, PhD, Tak H. Lee, MD, Alexander G. Chuchalin, MD, PhD, Stephen J. Langley, MB, Kulasiri A. Gunawardena, MD, Stanislav Suskovic, MD, PhD, Martino Laurenzi, MD, Jay Jasan, VMD, Joris Menten, MSc, Jonathan A. Leff, MD, and the Montelukast/Salmeterol Exercise Study Group, Lima, Peru, Dublin, Ireland, Bern, Switzerland, Heerlen, The Netherlands, London, Manchester, and Stoke Poges, United Kingdom, Moscow, Russia, Ljubljana, Slovenia, and Whitehouse Station, NJ*
- The magnitude of the effect of smaller family sizes on the increase in the prevalence of asthma and hay fever in the United Kingdom and New Zealand 554  
*Kristin Wickens, DPH, Julian Crane, FRACP, Neil Pearce, PhD, and Richard Beasley, MD, Wellington, New Zealand*
- EC** Association of urinary leukotriene E<sub>4</sub> excretion during aspirin challenges with severity of respiratory responses 559  
*Pamela J. Daffern, MD, Diego Muilenburg, BA, Tony E. Hugli, PhD, and Donald D. Stevenson, MD, La Jolla, Calif*
- EC** In vivo resistance to corticosteroids in bronchial asthma is associated with enhanced phosphorylation of JUN N-terminal kinase and failure of prednisolone to inhibit JUN N-terminal kinase phosphorylation 565  
*Ana R. Sousa, PhD, Stephen J. Lane, MRCPI, PhD, Cecilia Soh, PhD, and Tak H. Lee, ScD, FRCP, London, United Kingdom*
- Altered expression and action of the low-affinity IgE receptor FcεRII (CD23) in asthmatic airway smooth muscle 575  
*Hakon Hakonarson, MD, Carrie Carter, BA, Cecilia Kim, BA, and Michael M. Grunstein, MD, PhD, Philadelphia, Pa*
- EC** Prevention of severe premenstrual asthma attacks by leukotriene receptor antagonist 585  
*Hiroko Nakasato, MD, Takashi Ohnui, MD, Kiyohisa Sekizawa, MD, Toshifumi Matsui, MD, Mutsuo Yamaya, MD, Gen Tamura, MD, and Hidetada Sasaki, MD, Sendai, Japan*
- ### *Mechanisms of allergy*
- Breast-feeding, maternal IgE, and total serum IgE in childhood 589  
*Anne L. Wright, PhD, Duane Sherrill, PhD, Catharine J. Holberg, PhD, Marilyn Halonen, PhD, and Fernando D. Martinez, MD, Tucson, Ariz*

Continued on page 84



- Allergic airway inflammation in hypothyroid rats **595**  
*Simone Manzolli, MSc, Maria Fernanda Macedo-Soares, PhD, Elcio O. Vianna, MD, PhD, and Paulina Sannomiya, PhD, São Paulo, Brazil*
- Skin test reactivity to 2 recombinant *Aspergillus fumigatus* allergens in *A. fumigatus*-sensitized asthmatic subjects allows diagnostic separation of allergic bronchopulmonary aspergillosis from fungal sensitization **601**  
*Stefanie Hemmann, PhD, Günter Menz, MD, Chaim Ismail, MD, Kurt Blaser, PhD, and Reto Cramer, PhD, Davos, Switzerland*
- Isolation and characterization of the mountain cedar (*Juniperus ashei*) pollen major allergen, Jun a 1 **608**  
*Terumi Midoro-Horiuti, MD, PhD, Randall M. Goldblum, MD, Alexander Kurosky, PhD, David W. Goetz, MD, PhD, and Edward G. Brooks, MD, Galveston and Lackland Air Force Base, Tex*
- Molecular cloning of the mountain cedar (*Juniperus ashei*) pollen major allergen, Jun a 1 **613**  
*Terumi Midoro-Horiuti, MD, PhD, Randall M. Goldblum, MD, Alexander Kurosky, PhD, Thomas G. Wood, PhD, Catherine H. Schein, PhD, and Edward G. Brooks, MD, Galveston, Tex*
- Linkage between IgE receptor-mediated histamine releasability from basophils and gene marker of chromosome 11q13 **618**  
*Yoon-Keun Kim, MD, Sang-Heon Cho, MD, Young-Yull Koh, MD, Jee-Woong Son, MD, Byung-Jae Lee, MD, Kyung-Up Min, MD, and You-Young Kim, MD, Seoul, Korea*
- EC** An in vitro comparison of commonly used topical glucocorticoid preparations **623**  
*Cristiana Stellato, MD, PhD, Jun Asuta, MD, PhD, Carol A. Bickel, MS, and Robert P. Schleimer, PhD, Baltimore, Md, and Tsu Mie, Japan*
- IgE-binding proliferative responses and skin test reactivity to Cop c 1, the first recombinant allergen from the basidiomycete *Coprinus comatus* **630**  
*Karl A. Brander, PhD, Peter Borbély, MD, Reto Cramer, PhD, Werner J. Pichler, MD, and Arthur Helbling, MD, Bern and Davos, Switzerland*
- Basic and clinical immunology**
- Immunopathogenesis of human gastrointestinal infection by *Anisakis simplex* **637**  
*Victoria del Pozo, PhD, Ignacio Arrieta, MD, Teresa Tuñón, MD, PhD, Isabel Cortegano, BS, Belen Gomez, MD, Blanca Cárdbaba, PhD, Soledad Gallardo, PhD, Marta Rojo, BS, Guadalupe Renedo, MD, PhD, Pilar Palomino, PhD, Ana I. Tabar, MD, PhD, and Carlos Lahoz, MD, PhD, Madrid and Pamplona, Spain*
- EC** Differential regulation of cytokine expression after allergen exposure of sensitized rats by cyclosporin A and corticosteroids: Relationship to bronchial hyperresponsiveness **644**  
*Tung-Jung Huang, MD, Robert Newton, PhD, El-Bdaoui Haddad, PhD, and K. Fan Chung, MD, London, United Kingdom, and Keelung, Republic of China*

- Gonadotropin-releasing hormone increases CD4<sup>+</sup> T-lymphocyte numbers in an animal model of immunodeficiency 653

*Jill D. Jacobson, MD, Mansoor A. Ansari, PhD, Matthew E. Mansfield, MS, Carole P. McArthur, MD, and Lorán T. Clement, MD, Kansas City, Mo, and Los Angeles, Calif*

### ***Dermatologic and ocular diseases***

- Increased production of macrophage migration inhibitory factor by PBMCs of atopic dermatitis 659

*Tadamichi Shimizu, MD, Riichiro Abe, MD, Akira Ohkawara, MD, and Jun Nishihira, MD, Sapporo, Japan*

### ***Environmental and occupational disorders***

- Molecular cloning of a major *Alternaria alternata* allergen, rAlt a 2 665

*Robert K. Bush, MD, Hiram Sanchez, BS, and David Geisler, AAS, Madison, Wis*

- Measurement and characterization of cockroach allergens detected during normal domestic activity 672

*Sandra D. De Lucca, Bsc (Hons), David J. M. Taylor, Bsc (Hons), Timothy J. O'Meara, PhD, Allan S. Jones, PhD, and Euan R. Tovey, PhD, Sydney, Australia*

### ***Food and drug reactions and anaphylaxis***

- Cross-reactions in the latex-fruit syndrome: A relevant role of chitinases but not of complex asparagine-linked glycans 681

*Araceli Diaz-Perales, BS, Carmen Collada, PhD, Carlos Blanco, PhD, Rosa Sanchez-Monge, PhD, Teresa Carrillo, PhD, Cipriano Aragoncillo, PhD, and Gabriel Salcedo, PhD, Madrid and Las Palmas de Gran Canaria, Spain*

- Pollen allergy in peach-allergic patients: Sensitization and cross-reactivity to taxonomically unrelated pollens 688

*Javier Cuesta-Herranz, MD, PhD, Milagros Lázaro, MD, PhD, Alberto Martínez, PhD, Elena Figueredo, MD, Ricardo Palacios, PhD, Manuel de-Las-Henas, MD, and Jorge Martínez, PhD, Madrid, Salamanca, and Bilbao, Spain*

- IgE reactivity to  $\alpha$ 1 and  $\alpha$ 2 chains of bovine type 1 collagen in children with bovine gelatin allergy 695

*Masahiro Sakaguchi, PhD, Hisae Hori, PhD, Shunji Hattori, PhD, Shinkichi Irie, PhD, Atsushi Imai, DVM, Makoto Yanagida, PhD, Hiroshi Miyazawa, PhD, Masako Toda, PhD, and Sakae Inouye, MD, Tokyo and Gunma, Japan*

### **Brief communications**

- Allergy to proteases in medical laboratory technicians: A new occupational disease? 700

*Werner Kempf, MD, Hans Oman, PhD, and Brunello Wüthrich, MD, Zürich and Uppsala, Switzerland*

# Explore Litigation Insights

Docket Alarm provides insights to develop a more informed litigation strategy and the peace of mind of knowing you're on top of things.

## Real-Time Litigation Alerts



Keep your litigation team up-to-date with **real-time alerts** and advanced team management tools built for the enterprise, all while greatly reducing PACER spend.

Our comprehensive service means we can handle Federal, State, and Administrative courts across the country.

## Advanced Docket Research



With over 230 million records, Docket Alarm's cloud-native docket research platform finds what other services can't. Coverage includes Federal, State, plus PTAB, TTAB, ITC and NLRB decisions, all in one place.

Identify arguments that have been successful in the past with full text, pinpoint searching. Link to case law cited within any court document via Fastcase.

## Analytics At Your Fingertips



Learn what happened the last time a particular judge, opposing counsel or company faced cases similar to yours.

Advanced out-of-the-box PTAB and TTAB analytics are always at your fingertips.

## API

Docket Alarm offers a powerful API (application programming interface) to developers that want to integrate case filings into their apps.

## LAW FIRMS

Build custom dashboards for your attorneys and clients with live data direct from the court.

Automate many repetitive legal tasks like conflict checks, document management, and marketing.

## FINANCIAL INSTITUTIONS

Litigation and bankruptcy checks for companies and debtors.

## E-DISCOVERY AND LEGAL VENDORS

Sync your system to PACER to automate legal marketing.