



[54] **PROTOCOL ANALYZER FOR MONITORING DIGITAL TRANSMISSION NETWORKS**

[75] Inventors: **Craig D. Anderson**, Durham; **Mark B. Anderson**, Chapel Hill; **Eugene N. Cookmeyer**, Apex; **Ralph A. Daniels**, Clayton; **Lee E. Wheat**, Durham; **Roger A. Lingle**, Raleigh, all of N.C.

[73] Assignee: **Wandel & Goltermann Technologies, Inc.**

[21] Appl. No.: **742,093**

[22] Filed: **Oct. 31, 1996**

Related U.S. Application Data

- [60] Provisional application No. 60/023,459, Aug. 2, 1996.
- [51] **Int. Cl.⁶** **H04L 12/26**
- [52] **U.S. Cl.** **370/252; 371/20.1; 395/183.15**
- [58] **Field of Search** **370/241, 252, 370/253; 371/20.1; 395/183.15, 200.94**

References Cited

U.S. PATENT DOCUMENTS

4,437,184	3/1984	Cork et al.	371/19
4,550,407	10/1985	Couason et al.	371/29
4,672,611	6/1987	Fukuhara et al.	371/59
4,680,755	7/1987	Reames	370/85
4,775,973	10/1988	Tomberlin et al.	370/60
4,792,753	12/1988	Iwai	324/73
4,887,260	12/1989	Carden et al.	370/60
4,916,694	4/1990	Roth	370/94
5,040,111	8/1991	Al-Salameth et al.	364/200
5,090,014	2/1992	Polich et al.	371/15.1
5,097,469	3/1992	Douglas	371/20.1
5,187,708	2/1993	Nakatani et al.	370/85.1
5,197,127	3/1993	Waclawski et al.	395/200
5,260,970	11/1993	Henry et al.	375/10
5,276,529	1/1994	Williams	358/406
5,276,802	1/1994	Yamaguchi et al.	395/164
5,278,836	1/1994	Imura et al.	370/112
5,282,194	1/1994	Harley, Jr. et al.	370/17
5,287,506	2/1994	Whiteside	395/650

5,293,384	3/1994	Keeley et al.	371/16.3
5,303,344	4/1994	Yokoyama et al.	395/200
5,309,507	5/1994	Hosaka et al.	379/96
5,317,725	5/1994	Smith et al.	395/575
5,317,742	5/1994	Bapat	395/700
5,325,528	6/1994	Klein	395/650
5,333,302	7/1994	Hensley et al.	395/575
5,345,396	9/1994	Yamaguchi	395/500
5,347,524	9/1994	l'Anson	371/29.1
5,373,346	12/1994	Hocker	364/550
5,375,126	12/1994	Wallace	371/20.1
5,375,159	12/1994	Williams	379/23
5,377,196	12/1994	Godlew et al.	371/20.1
5,418,972	5/1995	Takeuchi et al.	395/800

(List continued on next page.)

OTHER PUBLICATIONS

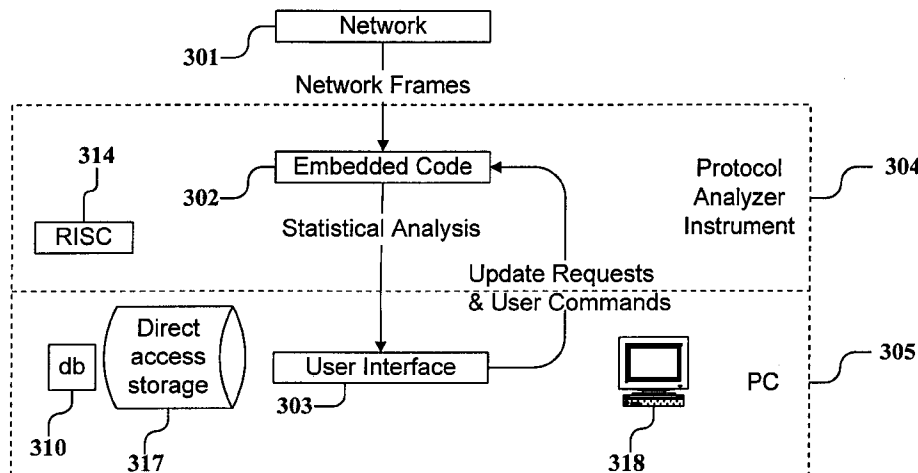
- Uyless Black, "OSI: A Model for Computer Communications Standards", Prentice-Hall, Inc., pp. 8-11 and 54-56, 1991.
- Weaver, Alfred C. and McNabb, James F., "A Real-Time Monitor for Token Ring Networks," MILCOM '89: Bridging the Gap, pp. 794-798, 1989.
- Brochure, Network General Corporation, Products and Services, dated May, 1995, face, back page, and pp. 1-10.

Primary Examiner—Melvin Marcelo
Attorney, Agent, or Firm—Moore & Van Allen, PLLC; William G. Dosse

[57] **ABSTRACT**

A new and improved protocol analyzer for monitoring digital transmission networks is disclosed. The protocol analyzer of the present invention is capable of displaying station level statistics, network statistics, real-time event information, and protocol distribution. The protocol analyzer of the present invention is additionally capable of creating baseline network performance information and displaying the baseline information simultaneously with real-time performance information, pre-programming monitoring sessions, and generating presentation-quality reports in conjunction with analyzing digital transmission networks, all in real time.

1 Claim, 18 Drawing Sheets



U.S. PATENT DOCUMENTS

5,434,845	7/1995	Miller	370/13
5,440,719	8/1995	Hanes et al.	395/500
5,442,737	8/1995	Smith	395/135
5,442,741	8/1995	Hughes et al.	395/142
5,444,706	8/1995	Osaki	370/94.1
5,446,874	8/1995	Waclawski et al.	395/575
5,457,729	10/1995	Hamann et al.	379/2
5,469,463	11/1995	Polich et al.	395/182.18
5,473,551	12/1995	Sato et al.	364/496
5,475,732	12/1995	Pester, III	379/34
5,477,531	12/1995	McKee et al.	370/17
5,481,548	1/1996	Wallace	371/20.1
5,490,199	2/1996	Fuller et al.	379/1
5,504,736	4/1996	Cubbison, Jr.	370/13
5,701,400	12/1997	Amado	395/76

OTHER PUBLICATIONS

Distributed Sniffer System, "Seven-Layer Analysis on all Segments Quickly Pinpoints Problems And Recommends Solutions", Network General Corporation, dated May, 1996, 6 pages.

Sniffer Network Analyzer, "Seven-Layer Analysis on all Segments Quickly Pinpoints Problems And Recommends Solutions", Network General Corporation, dated Jul. 1996, 6 pages.

Product Brochure, DominoLAN™ Internetwork Analyzer, DA-320, Wandel & Goltermann, 6 pages.

User Guide, Link View™ 1000 Network Analyzer, Tinwald Networking Technologies Inc., dated Jan. 1, 1996.

FIG. 1

LAYER 7 - APPLICATION LAYER
LAYER 6 - PRESENTATION LAYER
LAYER 5 - SESSION LAYER
LAYER 4 - TRANSPORT LAYER
LAYER 3 - NETWORK LAYER
LAYER 2 - DATA LINK LAYER
LAYER 1 - PHYSICAL LAYER

FIG. 2

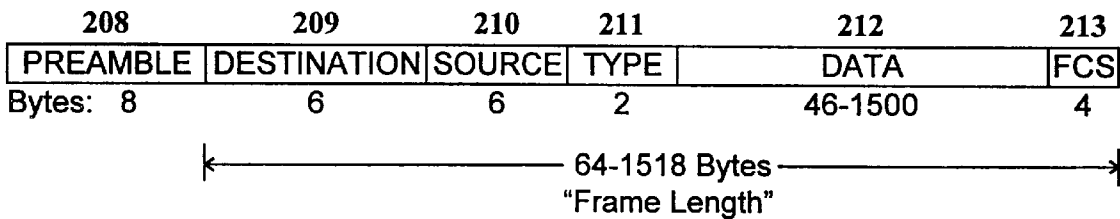


FIG. 3

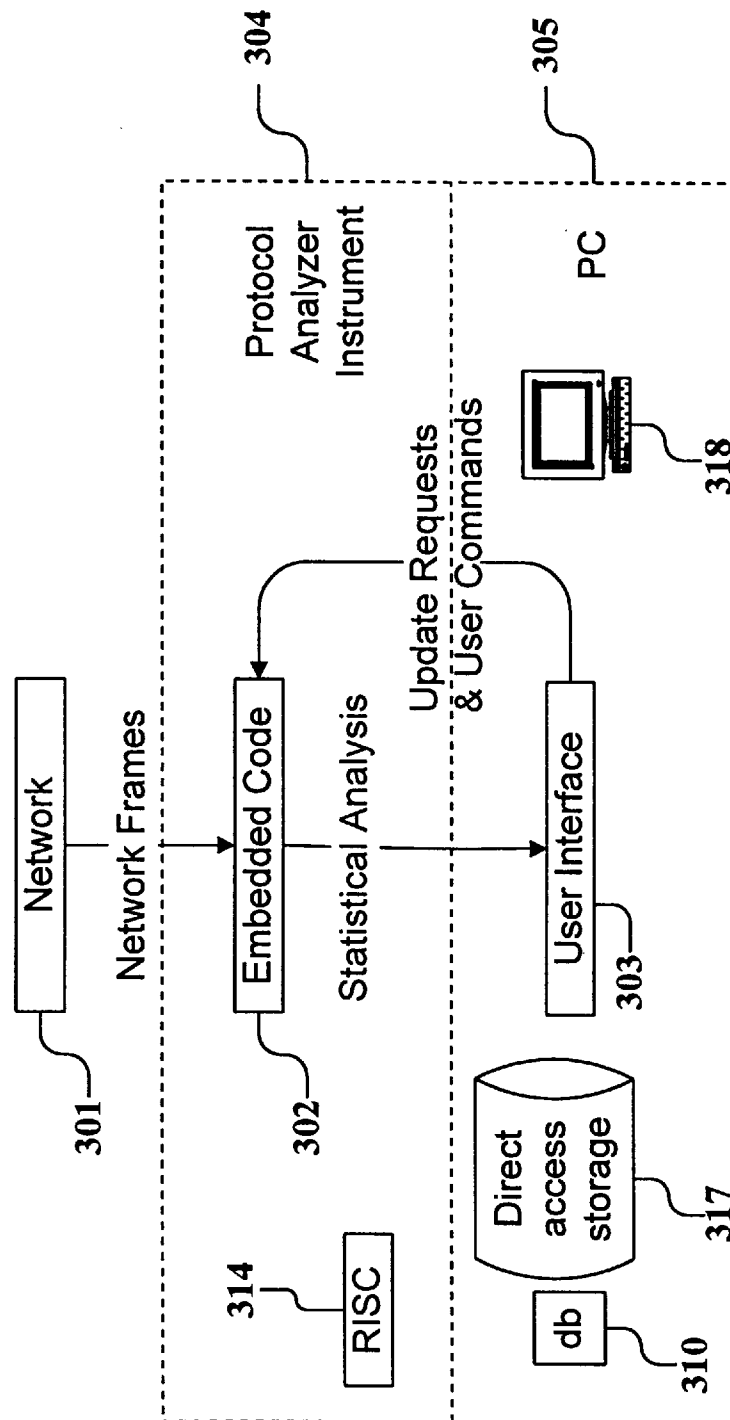
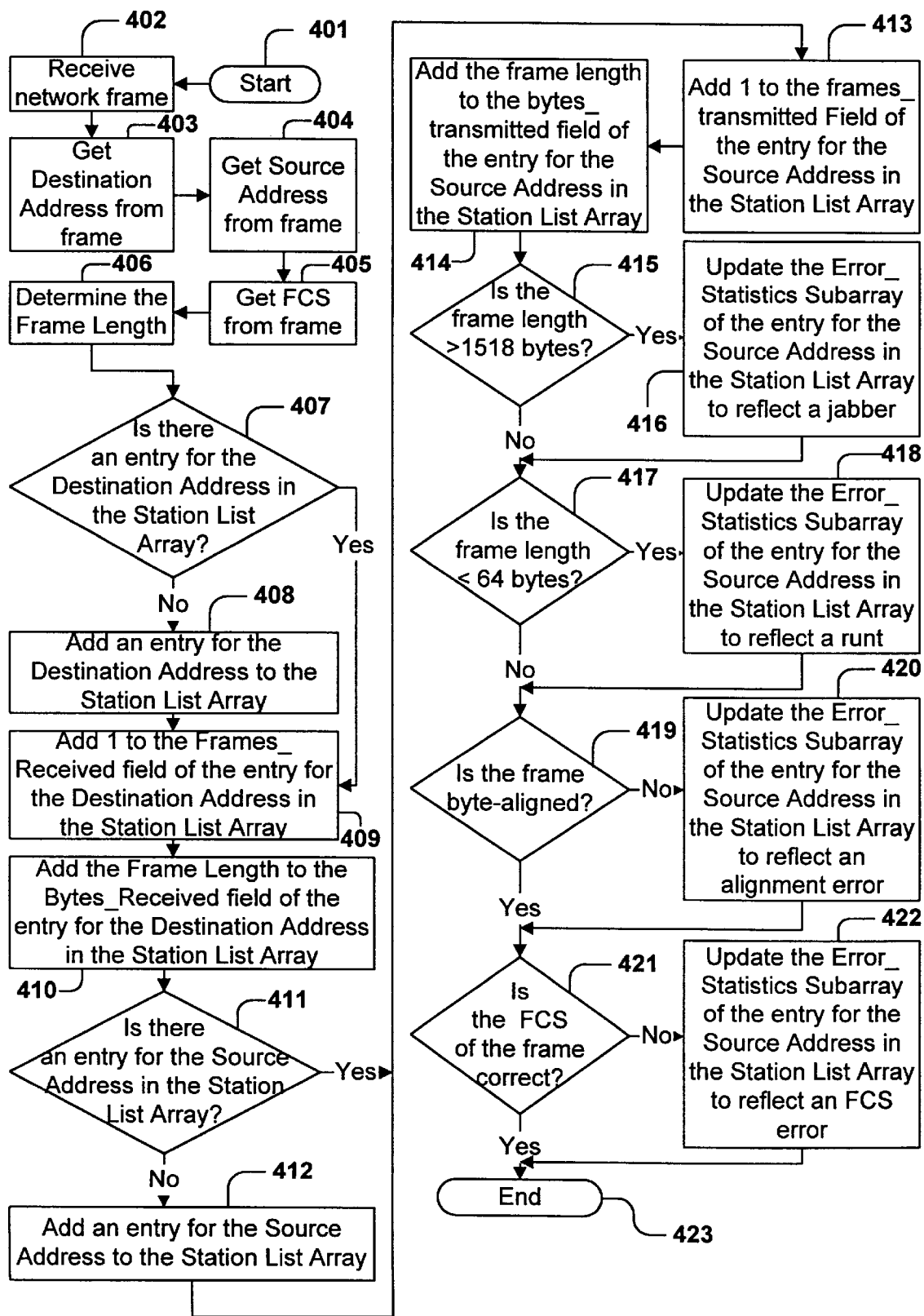


FIG. 4



Explore Litigation Insights

Docket Alarm provides insights to develop a more informed litigation strategy and the peace of mind of knowing you're on top of things.

Real-Time Litigation Alerts



Keep your litigation team up-to-date with **real-time alerts** and advanced team management tools built for the enterprise, all while greatly reducing PACER spend.

Our comprehensive service means we can handle Federal, State, and Administrative courts across the country.

Advanced Docket Research



With over 230 million records, Docket Alarm's cloud-native docket research platform finds what other services can't. Coverage includes Federal, State, plus PTAB, TTAB, ITC and NLRB decisions, all in one place.

Identify arguments that have been successful in the past with full text, pinpoint searching. Link to case law cited within any court document via Fastcase.

Analytics At Your Fingertips



Learn what happened the last time a particular judge, opposing counsel or company faced cases similar to yours.

Advanced out-of-the-box PTAB and TTAB analytics are always at your fingertips.

API

Docket Alarm offers a powerful API (application programming interface) to developers that want to integrate case filings into their apps.

LAW FIRMS

Build custom dashboards for your attorneys and clients with live data direct from the court.

Automate many repetitive legal tasks like conflict checks, document management, and marketing.

FINANCIAL INSTITUTIONS

Litigation and bankruptcy checks for companies and debtors.

E-DISCOVERY AND LEGAL VENDORS

Sync your system to PACER to automate legal marketing.