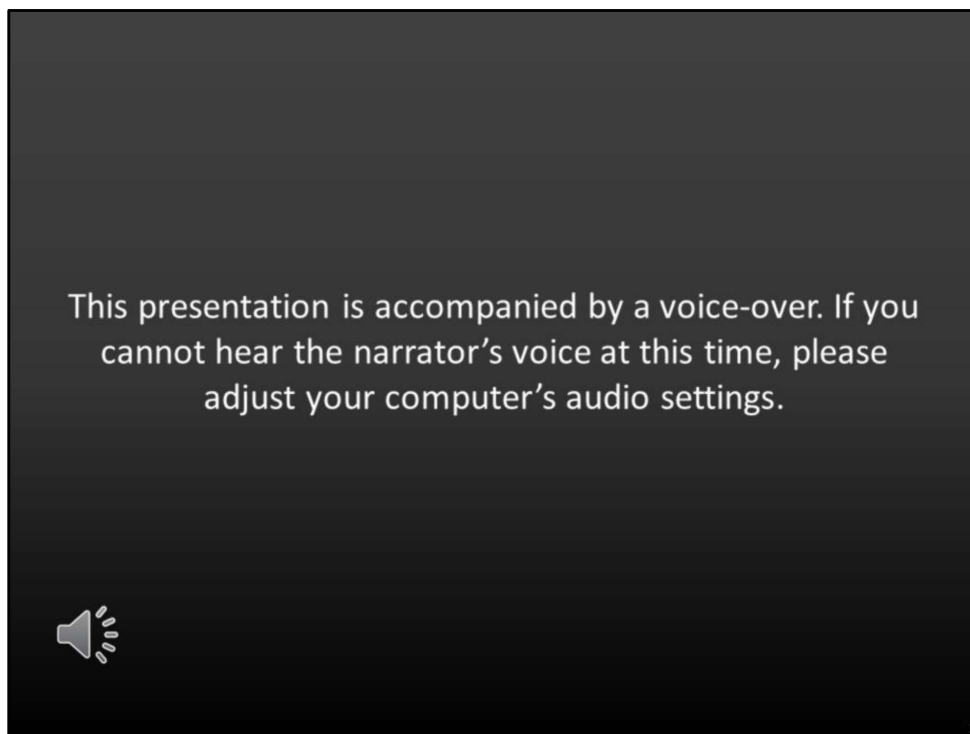
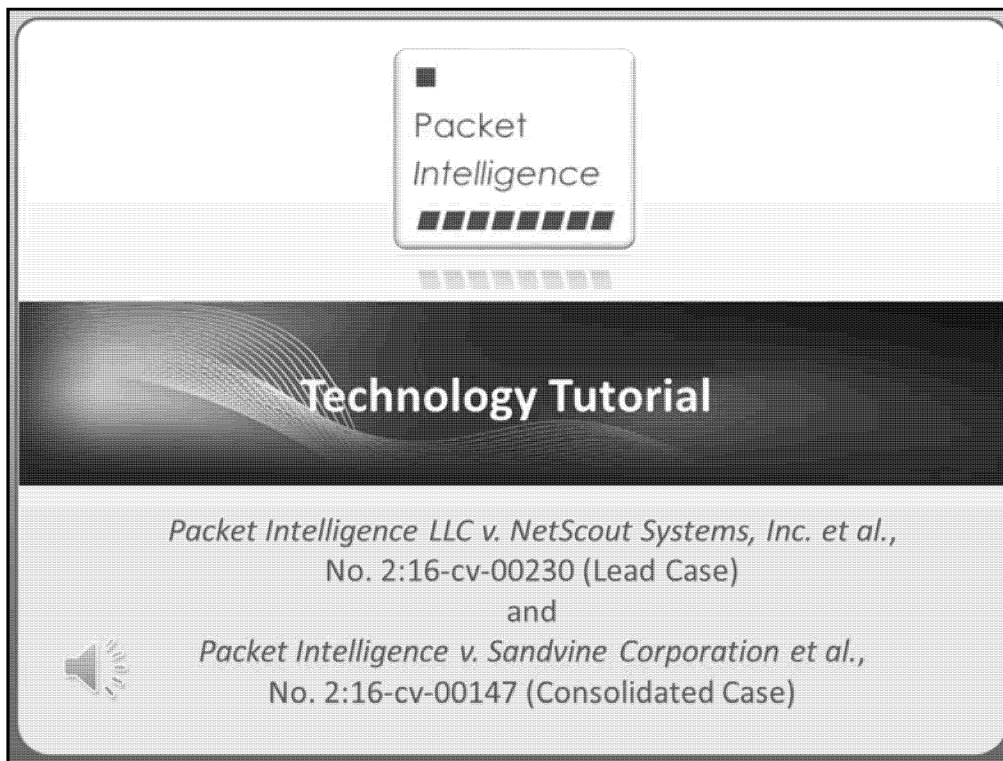


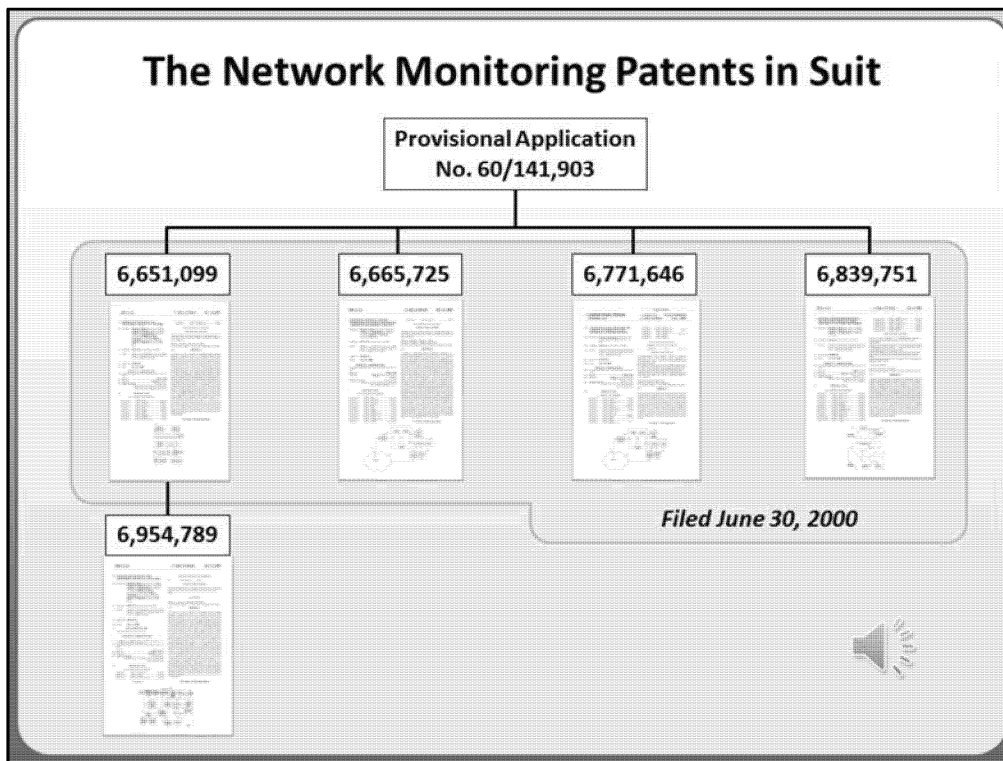
EXHIBIT G



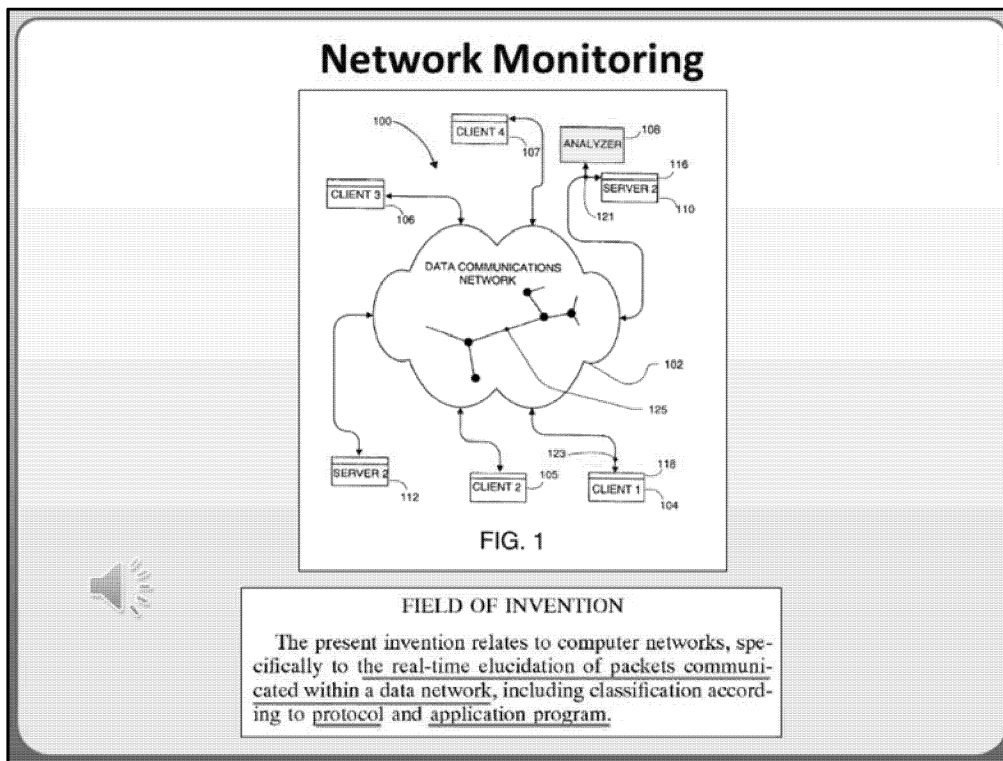
This presentation is accompanied by a voice-over. If you cannot hear the narrator's voice at this time, please adjust your computer's audio settings.



Plaintiff Packet Intelligence presents this tutorial to familiarize the Court with the technology of the patents in suit.



The patents-in-suit are all related and claim priority to the same provisional application. The '099, '725, '646, and '751 patent all were filed on the same day, June 30, 2000. The '789 patent was filed as a Continuation application to the '099 patent.



The patents-in-suit relate to a network monitor that analyzes network communications. According to the patents, the monitor determines two things. First, the network monitor determines the underlying protocols used within a network communication. Second, the monitor uses the identified protocols and data transmitted within those protocols to determine the application responsible for the communication.

The packets are analyzed as they pass through a connection point on a computer network. As the packets are received, they are analyzed to determine the underlying protocols and ultimately the application related to the communication. This process may involve analyzing multiple packets before the related protocols and applications are determined.

Explore Litigation Insights

Docket Alarm provides insights to develop a more informed litigation strategy and the peace of mind of knowing you're on top of things.

Real-Time Litigation Alerts



Keep your litigation team up-to-date with **real-time alerts** and advanced team management tools built for the enterprise, all while greatly reducing PACER spend.

Our comprehensive service means we can handle Federal, State, and Administrative courts across the country.

Advanced Docket Research



With over 230 million records, Docket Alarm's cloud-native docket research platform finds what other services can't. Coverage includes Federal, State, plus PTAB, TTAB, ITC and NLRB decisions, all in one place.

Identify arguments that have been successful in the past with full text, pinpoint searching. Link to case law cited within any court document via Fastcase.

Analytics At Your Fingertips



Learn what happened the last time a particular judge, opposing counsel or company faced cases similar to yours.

Advanced out-of-the-box PTAB and TTAB analytics are always at your fingertips.

API

Docket Alarm offers a powerful API (application programming interface) to developers that want to integrate case filings into their apps.

LAW FIRMS

Build custom dashboards for your attorneys and clients with live data direct from the court.

Automate many repetitive legal tasks like conflict checks, document management, and marketing.

FINANCIAL INSTITUTIONS

Litigation and bankruptcy checks for companies and debtors.

E-DISCOVERY AND LEGAL VENDORS

Sync your system to PACER to automate legal marketing.