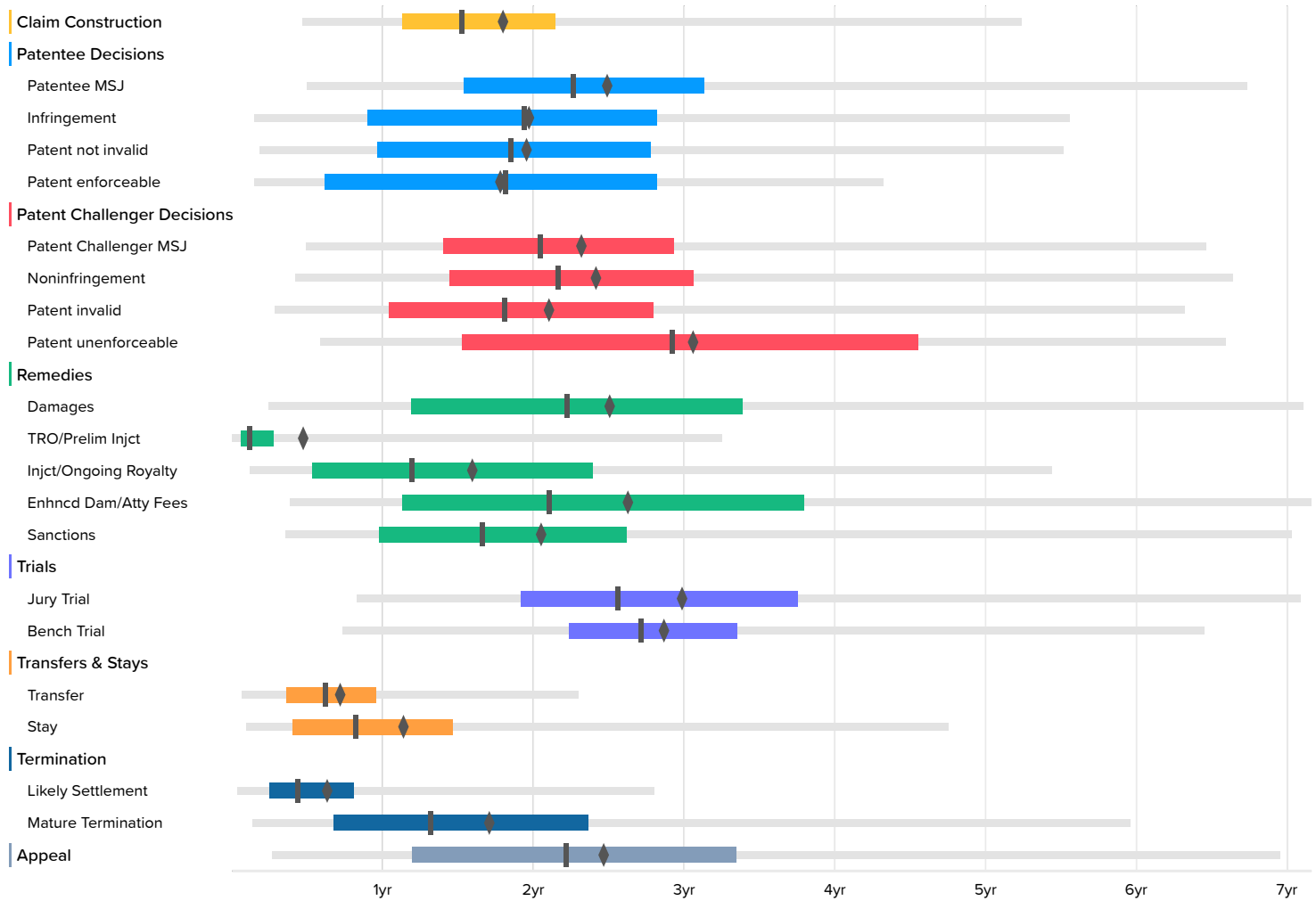


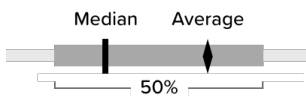
Time to Milestones Search

Time to Milestones

U.S. District Courts (50927 cases)



The milestones shown in this chart are based on Docket Navigator's classification of orders matching the search criteria specified to generate the report. Each box plot shows the time between the filing of the complaint and the named milestone. The left and right ends of the box labeled 50% are respectively the first- and third-quartiles. The lighter line shows events between the 2nd and 98th percentile. The remaining points are outliers, represent at most 4% of the data, and are not shown, however, the true minimum and maximum are included in the accompanying table and the mean includes outliers. Fewer than ten events occurring in a category are shown as dots instead of a box plot.



U.S. District Courts

	Occurrences	Minimum	2nd Percentile	First Quartile	Median	Third Quartile	98th Percentile	Maximum	Average
Claim Construction	5235	-32.8	5.6	13.5	18.3	25.7	62.7	140.8	21.7
Patentee MSJ	1872	0.3	6.0	18.4	27.1	37.5	80.7	115.7	30.0
Infringement	7370	0.3	1.8	10.8	23.2	33.7	66.6	134.2	23.8
Patent not invalid	9016		2.2	11.5	22.2	33.3	66.0	134.5	23.6
Patent enforceable	4860	0.3	1.8	7.4	21.7	33.7	51.8	115.7	21.5
Patent Challenger MSJ	4831	0.3	5.9	16.8	24.5	35.1	77.4	124.3	28.0
Noninfringement	4158	0.0	5.0	17.3	25.9	36.7	79.5	125.1	29.1
Patent invalid	3521	0.0	3.4	12.5	21.7	33.5	75.7	142.2	25.4
Patent unenforceable	142	1.8	7.0	18.3	35.0	54.5	79.0	96.3	36.8
Damages	1650	0.2	2.9	14.3	26.6	40.6	85.1	134.2	30.2
TRO/Prelim Injct	2403			0.7	1.4	3.3	38.9	75.0	5.9
Injct/Ongoing Royalty	7297	0.2	1.4	6.4	14.3	28.7	65.1	123.2	19.3
Enhncd Dam/Atty Fees	815	1.9	4.6	13.5	25.2	45.4	85.8	114.3	31.7
Sanctions	391	1.6	4.2	11.7	19.9	31.3	84.2	118.3	24.8
Jury Trial	1557	0.8	10.0	23.0	30.7	45.0	84.9	125.3	36.0
Bench Trial	392	4.6	8.8	26.8	32.5	40.1	77.3	102.9	34.5
Transfer	2859	0.0	0.8	4.3	7.4	11.5	27.5	70.1	8.8
Stay	9373		1.2	4.9	9.8	17.5	56.9	120.9	13.8
Likely Settlement	32987		0.4	3.0	5.2	9.7	33.6	92.8	7.8
Mature Termination	13969		1.6	8.1	15.8	28.3	71.4	142.2	20.7
Appeal	4222	-24.4	3.2	14.3	26.5	40.0	83.3	143.1	29.7