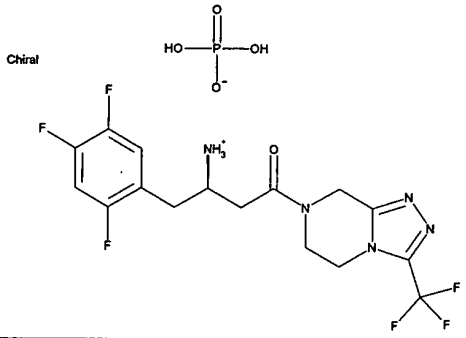


Empirical Formula: C16H16F6N5O 408.329 H2O4P 96.987
 Molecular Weight: 505.317
 Chemical name: (2R)-4-OXO-4-[3-(TRIFLUOROMETHYL)-5,6-DIHYDRO[1,2,4]TRIAZOLO[4,3-A]PYRAZIN-7(8H)-YL]-1-(2,4,5-TRIFLUOROPHENYL)BUTAN-2-AMINE PHOSPHORIC ACID SALT

L-000224715-006F017 17-JUN-2002
 Project Code: 0431
 Prepared By: KARL HANSEN
 Amount Made: 4.44 KG Reference: 72471-049
 Date Of Manufacture: 05-JUN-2002
 Sample ID(s): 200004693

Structure:



Date(s) Tested: 11-JUN-2002
 Milled: N Process Change: N
 Nature Of Change:
 Restricted Release By: ARMSTRONG, TILLYER
 Send To: B. Martell WP78-10 1.4 Kg Ph I
 B. Martell WP78-10 2.9 Kg Ph II
 Reserve Sample RY28 1 gram
18-Jun-2002

Warning: PB-ECL CODE P3 Storage Conditions: REFRIGERATED
 500MG FREEZER
18-Jun-2002

Appearance Color: WHITE Form: POWDER X-RAY Observations: CRYSTALLINE, SAME AS PREVIOUS (200004568) IMPURITY PROFILE RRT 0.95: 0.20 % RRT 0.97: 0.26 % Total impurities: 0.46 % # of quantifiable impurities <0.10%: 0 No other impurity =>: 0.05 % TITRATION - PERCHLORIC ACID Analyte: L-224715-006F Result: 100.2 (w/w) %* TITRATION - SODIUM HYDROXIDE Analyte: PHOSPHATE Result: 19.4 (w/w) %* ABSORBANCE - 1ST WAVELENGTH Solvent: DI WATER Wavelength 1: 267.0 nm A% @ wavelength 1: 37.7 A%* KARL FISCHER (KF) Water: 0.3 w/w% RESIDUAL SOLVENTS EtOH: N.D. (w/w) % RESIDUE ON IGNITION BY ICP Wt% of residue: <0.05 (w/w) % CHIRAL PURITY L-224715*: 100.00 %	MICROSCOPIC EXAM Phase: ANISOTROPIC Morphology: PLATE LIKE Agglomeration: MOSTLY PRIMARY PARTICLES AND SOME AGGLOMERATION SURFACE AREA Surface area: 2.78 sq. m/g PARTICLE SIZE Technique: MICRO TRAC Distribution type: VOLUME Average size: 62. um S.D. of distribution: 38. um 95% <: 139. um % < size: 20. % Size: 25 um BULK DENSITY Loose density: 0.34 g/mL Tapped density: 0.53 g/mL COLOR (SOLID) Solvent: DI WATER Concentration: 1.0 (w/v) % Wavelength: 440 nm A% x 1000: 3. NEPHELOS Solvent: DI WATER Concentration: 1.0 (w/v) % Result: 0.8 ntu PH Solvent: DI WATER Concentration: 1.0 (w/v) % Sample pH: 4.6 pH	DISC Solvent: DI WATER Net wt. (sample): 2.0 grams Visual Comparison to Std: < STD 1 IDENTITY BY FTIR Conforms: YES SPECIFIC ROTATION (SOLID) Solvent: DI WATER Concentration: 1.0 (w/v) % Specific Rotation: -75.6 degrees* DSC CHARACTERIZATION T onset 1: 216.1 degrees -C T max 1: 218.2 degrees -C Delta H 1: 93.0 J/g TG Weight Loss 1: N.D. w/w% Final Temp: 221.2 degrees -C HEAVY METALS BY ICP/MS USP<231> and EPA regulated elements: <10. ppm ELEMENTAL ANALYSIS Palladium (Pd): <3. ppm Copper (Cu): <3. ppm Ruthenium (Ru): <3. ppm POTENCY AS-IS Potency: 99.2 % As: L-224715-006F PHOSPHATE SALT Rationale: {100-GC-KF} X 0.01 {100-TOTAL IMPURITIES (LCAP +CHIRAL)} PURITY Purity: 99.5 % Rationale: BASED ON HPLC AREA PERCENT
---	--	--

* Dry basis

Phosphate theory = 19.4%

Dept. Approval: *[Signature]* 18 June 2002 Del. Sheet By: SCOTT THOMAS 13-JUN-2002
 Quality Approval: *Jean M. Wyratt* 18 June 2002 Reviewed By: *Jana V. Holder* 18 June 2002
 Transferred By: *[Signature]* 03 July 2002 Run ID: 103292681 Lot Id: 700000942

CC: Egan RY818-B204, Eiserle RY 818-C221, Thomas RY818-C208, Wyratt RY818-B201, Hansen RY800-B269, Armstrong RY800-D371, Kumke RY819-405
 Restricted