



US 20100190437A1

(19) **United States**

(12) **Patent Application Publication**
Buhot

(10) **Pub. No.: US 2010/0190437 A1**

(43) **Pub. Date: Jul. 29, 2010**

(54) **WIRELESS COMMUNICATION DEVICE FOR PROVIDING AT LEAST ONE NEAR FIELD COMMUNICATION SERVICE**

(52) **U.S. CL. 455/41.1**

(57) **ABSTRACT**

(75) **Inventor: Thomas Buhot, Toulouse (FR)**

Correspondence Address:
MOTOROLA INC
600 NORTH US HIGHWAY 45, W4 - 39Q
LIBERTYVILLE, IL 60048-5343 (US)

A wireless communication device (102) is arranged to provide at least one Near Field Communication service to a user. The wireless communication device (102) comprises a Near Field Communication unit (218) for storing a plurality of application elements (302-312) for use in providing a plurality of Near Field Communication services, and a plurality of Near Field Communication managing elements (318-328). Each of the plurality of Near Field Communication managing elements (318-328) is associated with at least one of the plurality of application elements (302-312) stored in the Near Field Communication unit (218) for managing the at least one associated application element of the plurality of application elements. A user interface element (224) interfaces with at least some of the Near Field Communication managing elements (318-328) and provides information to a user relating to the Near Field Communication services provided by the plurality of application elements (302-312) associated with the at least some of the Near Field Communication managing elements. In operation, the user interface element (224) in response to user selection of a Near Field Communication service based on the user provided information is further arranged to activate the Near Field Communication managing element of the selected Near Field Communication service to manage the at least one associated application element.

(73) **Assignee: MOTOROLA, INC., Schaumburg, IL (US)**

(21) **Appl. No.: 12/646,251**

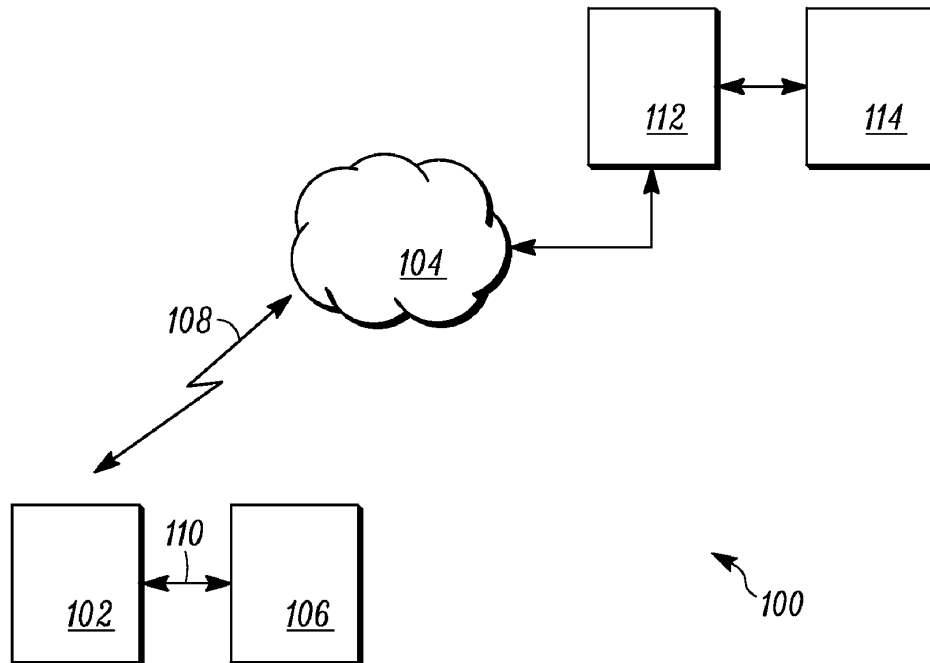
(22) **Filed: Dec. 23, 2009**

(30) **Foreign Application Priority Data**

Jan. 26, 2009 (EP) EP09290052

Publication Classification

(51) **Int. Cl.**
H04B 5/00 (2006.01)



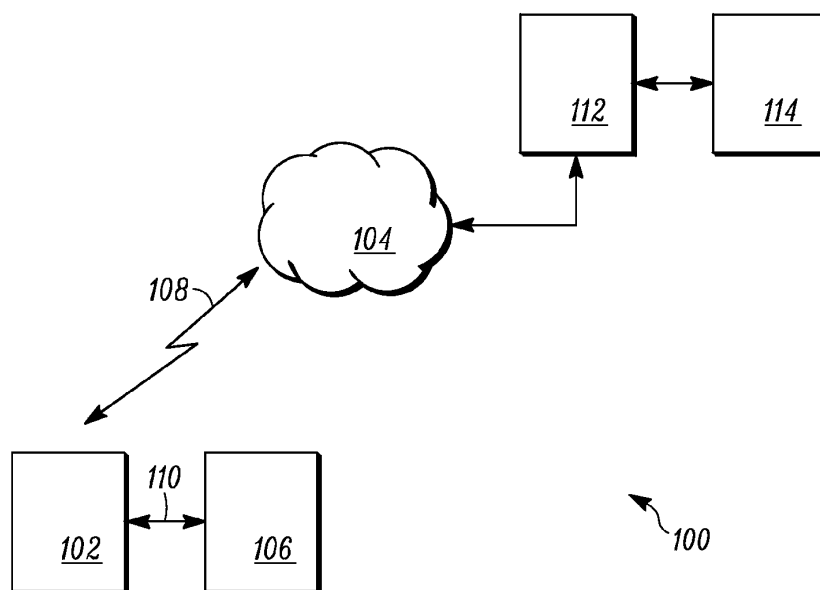


FIG. 1

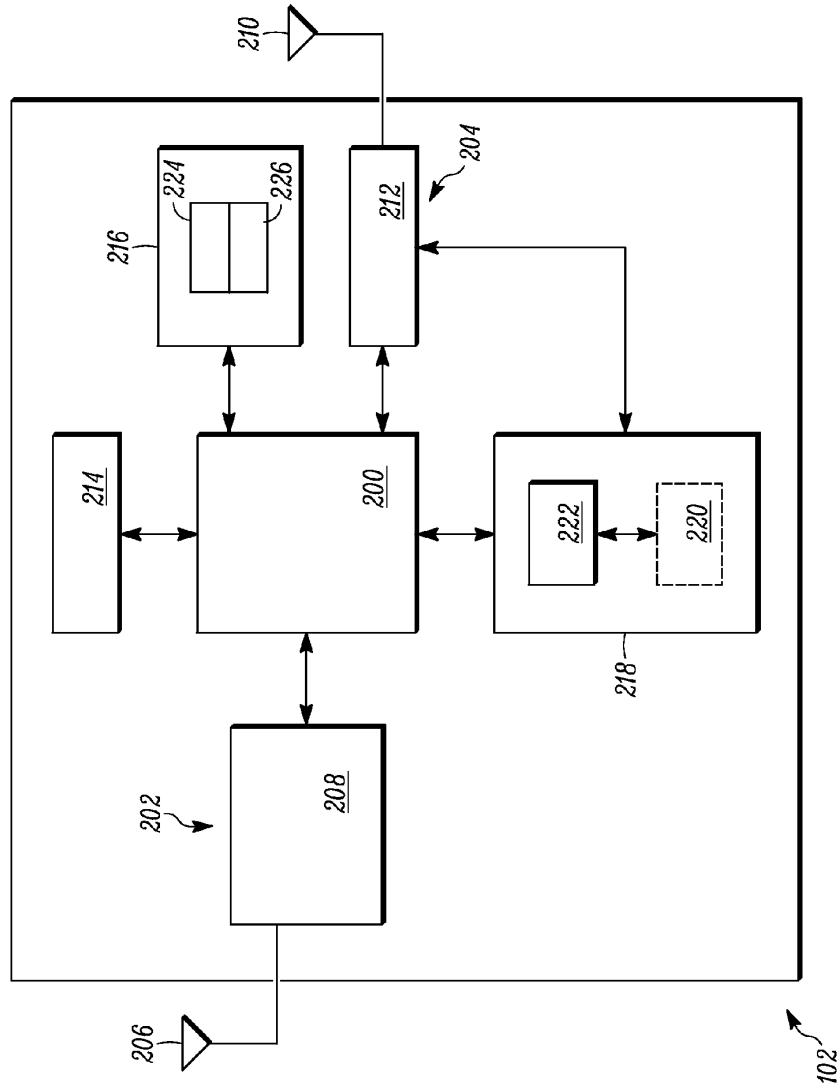


FIG. 2

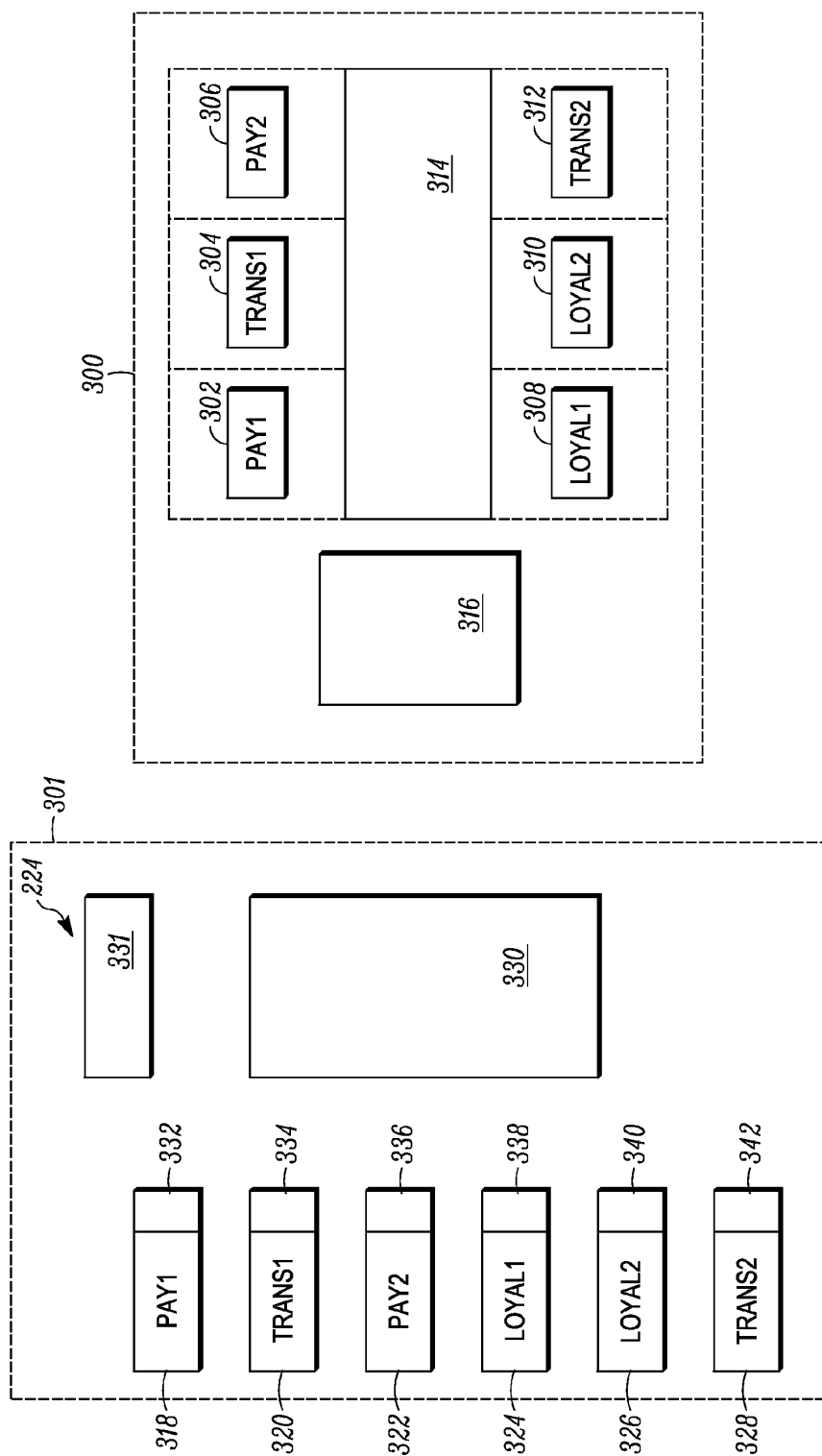


FIG. 3

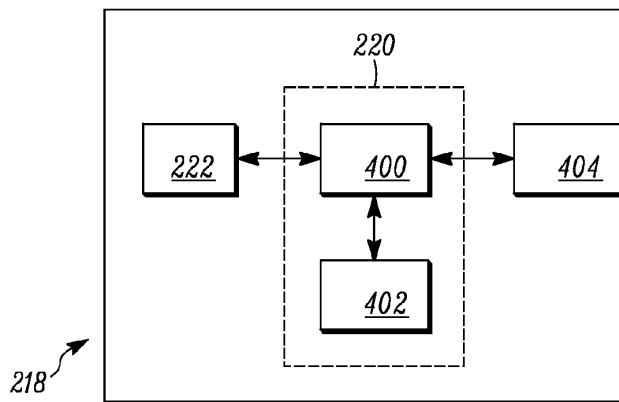


FIG. 4

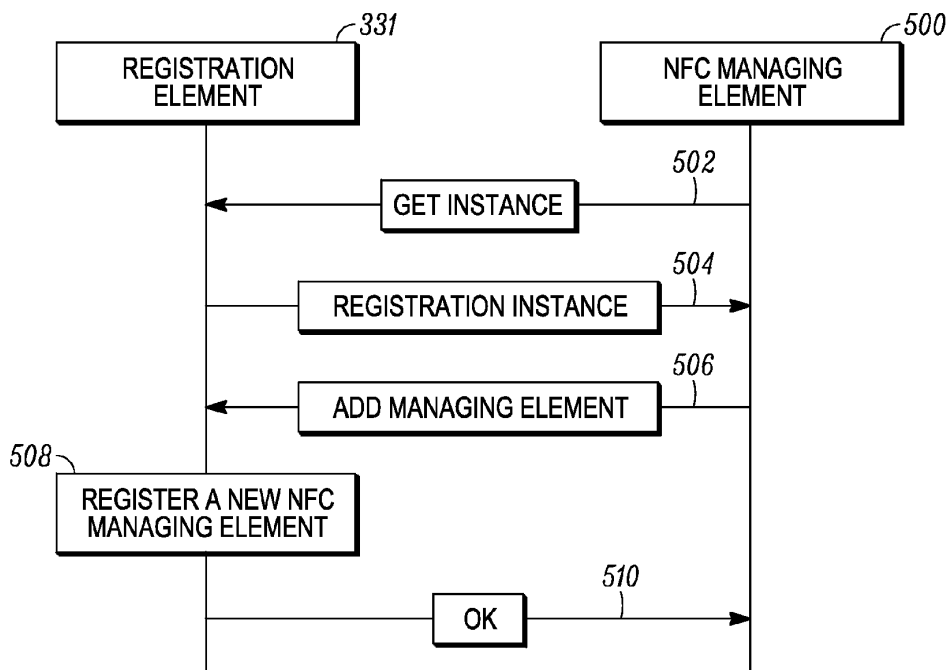


FIG. 5

Explore Litigation Insights

Docket Alarm provides insights to develop a more informed litigation strategy and the peace of mind of knowing you're on top of things.

Real-Time Litigation Alerts



Keep your litigation team up-to-date with **real-time alerts** and advanced team management tools built for the enterprise, all while greatly reducing PACER spend.

Our comprehensive service means we can handle Federal, State, and Administrative courts across the country.

Advanced Docket Research



With over 230 million records, Docket Alarm's cloud-native docket research platform finds what other services can't. Coverage includes Federal, State, plus PTAB, TTAB, ITC and NLRB decisions, all in one place.

Identify arguments that have been successful in the past with full text, pinpoint searching. Link to case law cited within any court document via Fastcase.

Analytics At Your Fingertips



Learn what happened the last time a particular judge, opposing counsel or company faced cases similar to yours.

Advanced out-of-the-box PTAB and TTAB analytics are always at your fingertips.

API

Docket Alarm offers a powerful API (application programming interface) to developers that want to integrate case filings into their apps.

LAW FIRMS

Build custom dashboards for your attorneys and clients with live data direct from the court.

Automate many repetitive legal tasks like conflict checks, document management, and marketing.

FINANCIAL INSTITUTIONS

Litigation and bankruptcy checks for companies and debtors.

E-DISCOVERY AND LEGAL VENDORS

Sync your system to PACER to automate legal marketing.