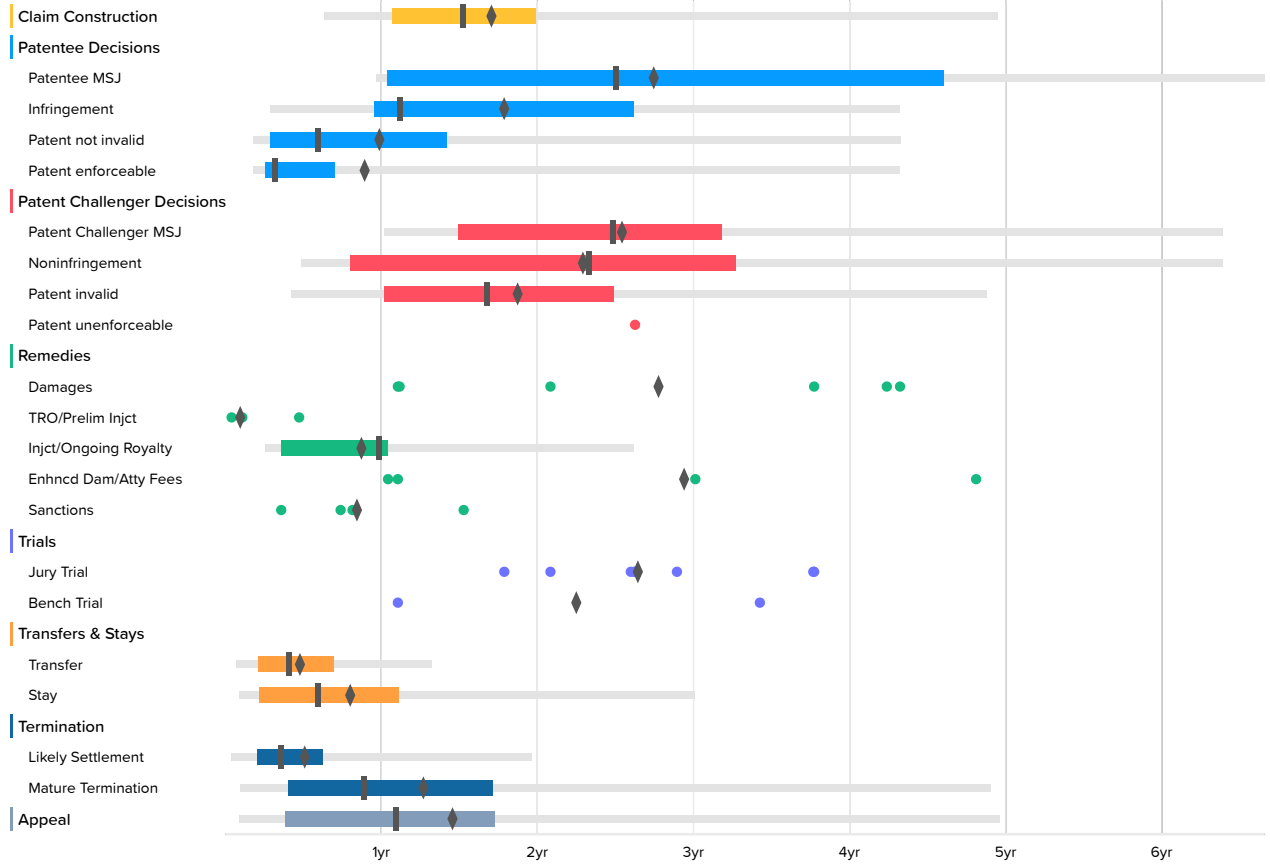


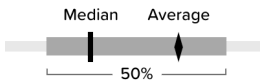
# Time to Milestones Search

## Western District of Texas Patent Cases (2008-present)

U.S. District Courts (976 cases)



The milestones shown in this chart are based on Docket Navigator's classification of orders matching the search criteria specified to generate the report. Each box plot shows the time between the filing of the complaint and the named milestone. The left and right ends of the box labeled 50% are respectively the first- and third-quartiles. The lighter line shows events between the 2nd and 98th percentile. The remaining points are outliers, represent at most 4% of the data, and are not shown, however, the true minimum and maximum are included in the accompanying table and the mean includes outliers. Fewer than ten events occurring in a category are shown as dots instead of a box plot.



## U.S. District Courts

	Occurrences	Minimum	2nd Percentile	First Quartile	Median	Third Quartile	98th Percentile	Maximum	Average
Claim Construction	82	1.3	7.6	12.8	18.2	23.9	59.2	62.8	20.6
Patentee MSJ	14	8.1	11.6	12.4	30.0	55.1	79.7	79.7	33.1
Infringement	31	3.4	3.4	11.4	13.4	31.3	51.8	51.8	21.6
Patent not invalid	165	2.2	2.2	3.5	7.1	17.0	51.8	55.6	12.0
Patent enforceable	120	2.2	2.2	3.1	3.8	8.4	51.8	79.7	10.9
Patent Challenger MSJ	43	4.0	12.2	17.9	29.8	38.1	76.5	76.5	30.6
Noninfringement	47	4.8	5.9	9.6	27.9	39.1	76.5	76.5	27.6
Patent invalid	63	3.9	5.0	12.2	20.1	29.8	58.4	62.8	22.6
Patent unenforceable	3	31.4			31.4			31.4	31.4
Damages	9	13.2			25.0			51.8	33.4
TRO/Prelim Injct	7	0.5			0.5			5.7	1.3
Injct/Ongoing Royalty	53	2.2	3.1	4.3	11.8	12.5	31.3	31.3	10.6
Enhncd Dam/Atty Fees	5	12.5			36.1			57.6	35.4
Sanctions	4	4.3			9.3			18.3	10.3
Jury Trial	9	21.4			31.4			45.2	31.9
Bench Trial	2	13.2			27.1			41.0	27.1
Transfer	90		0.9	2.5	4.9	8.3	15.8	21.2	5.9
Stay	148	0.2	1.0	2.6	7.1	13.3	36.0	80.1	9.8
Likely Settlement	432		0.5	2.4	4.3	7.5	23.5	53.2	6.3
Mature Termination	257	0.9	1.2	4.8	10.6	20.6	58.7	80.2	15.4
Appeal	35	0.2	1.0	4.6	13.1	20.7	59.4	59.4	17.6