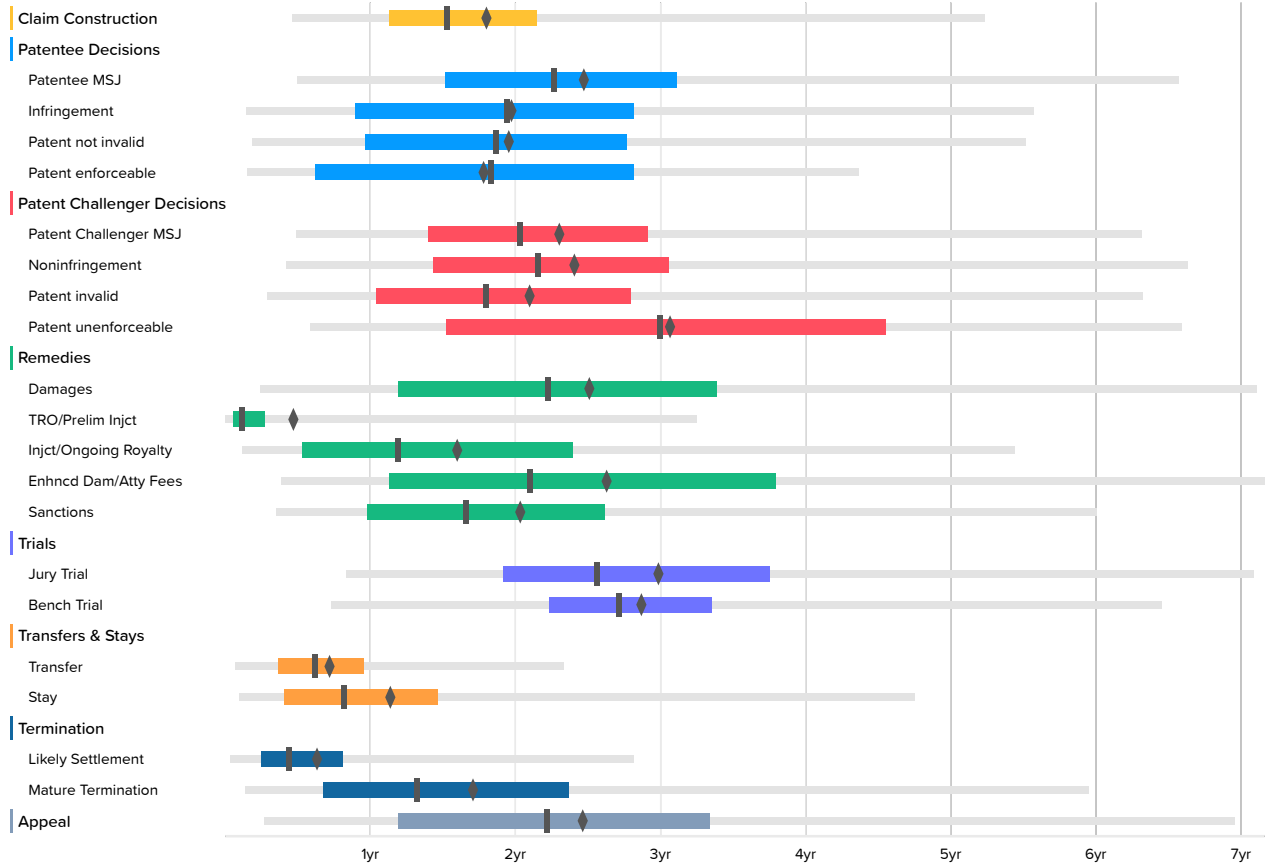


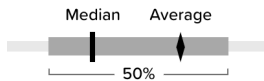
Time to Milestones Search

Nationwide District Court Patent Cases (2008-present)

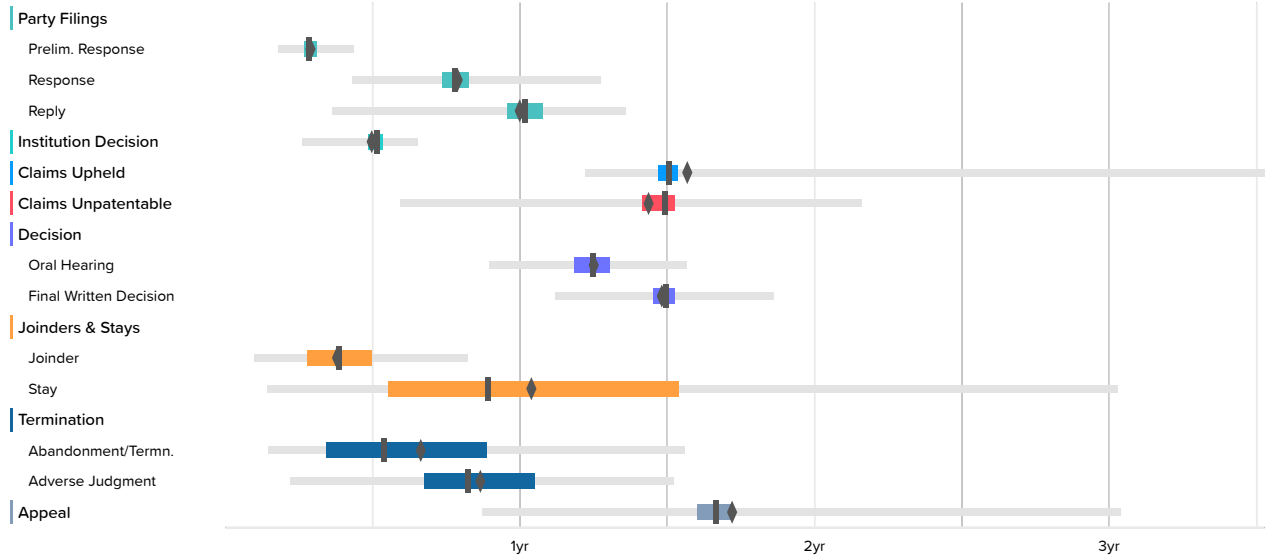
U.S. District Courts (50491 cases)



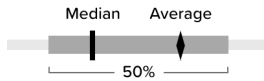
The milestones shown in this chart are based on Docket Navigator's classification of orders matching the search criteria specified to generate the report. Each box plot shows the time between the filing of the complaint and the named milestone. The left and right ends of the box labeled 50% are respectively the first- and third-quartiles. The lighter line shows events between the 2nd and 98th percentile. The remaining points are outliers, represent at most 4% of the data, and are not shown, however, the true minimum and maximum are included in the accompanying table and the mean includes outliers. Fewer than ten events occurring in a category are shown as dots instead of a box plot.



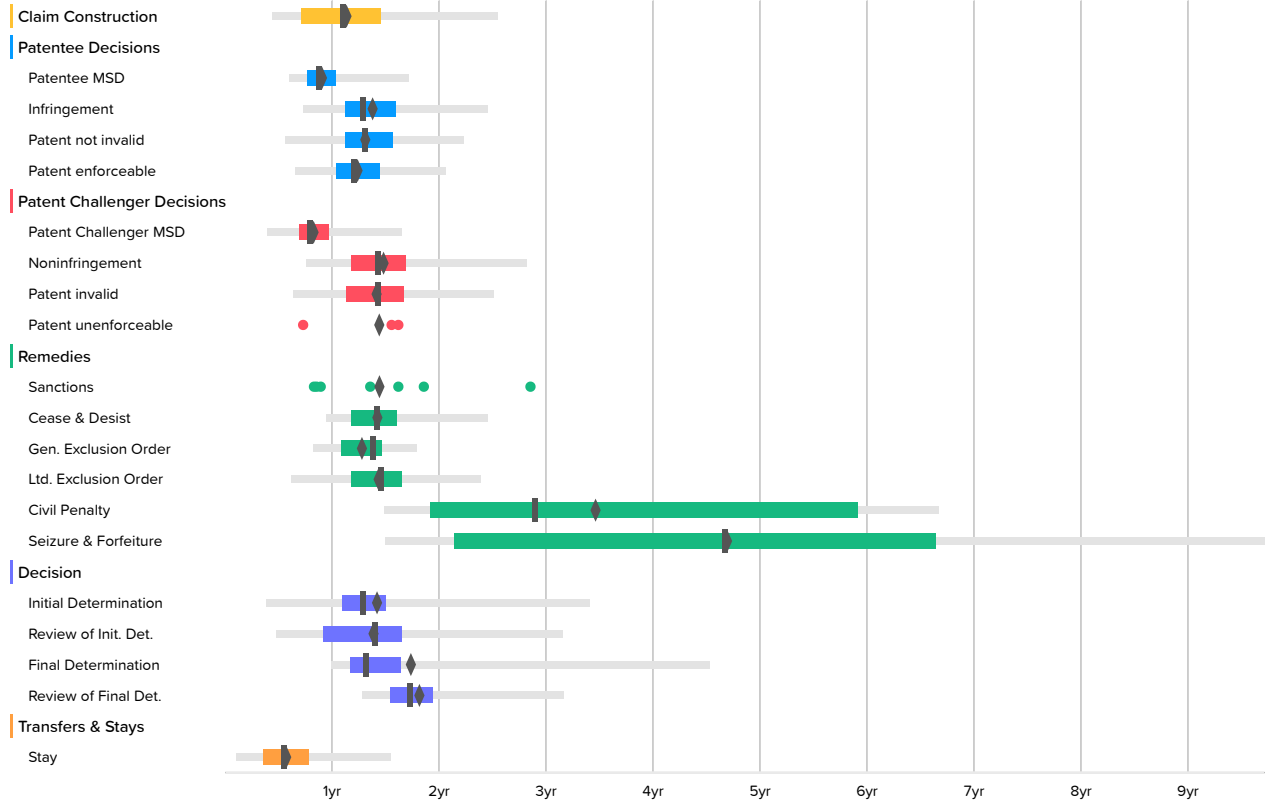
Patent Trial and Appeal Board (11289 cases)



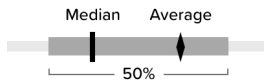
The milestones shown in this chart are based on Docket Navigator's classification of orders matching the search criteria specified to generate the report. Each box plot shows the time between the filing of the complaint and the named milestone. The left and right ends of the box labeled 50% are respectively the first- and third-quartiles. The lighter line shows events between the 2nd and 98th percentile. The remaining points are outliers, represent at most 4% of the data, and are not shown, however, the true minimum and maximum are included in the accompanying table and the mean includes outliers. Fewer than ten events occurring in a category are shown as dots instead of a box plot.



International Trade Commission (569 cases)



The milestones shown in this chart are based on Docket Navigator's classification of orders matching the search criteria specified to generate the report. Each box plot shows the time between the filing of the complaint and the named milestone. The left and right ends of the box labeled 50% are respectively the first- and third-quartiles. The lighter line shows events between the 2nd and 98th percentile. The remaining points are outliers, represent at most 4% of the data, and are not shown, however, the true minimum and maximum are included in the accompanying table and the mean includes outliers. Fewer than ten events occurring in a category are shown as dots instead of a box plot.



U.S. District Courts

	Occurrences	Minimum	2nd Percentile	First Quartile	Median	Third Quartile	98th Percentile	Maximum	Average
Claim Construction	5191	-32.8	5.5	13.5	18.3	25.7	62.7	140.8	21.8
Patentee MSJ	1852	0.3	6.0	18.1	27.1	37.2	78.7	115.7	29.8
Infringement	7268	0.3	1.8	10.8	23.3	33.7	66.8	134.2	23.8
Patent not invalid	8850		2.2	11.5	22.3	33.2	66.1	134.5	23.6
Patent enforceable	4773	0.3	1.8	7.4	22.0	33.7	52.3	115.7	21.5
Patent Challenger MSJ	4783	0.3	5.9	16.7	24.3	34.9	75.7	124.3	27.8
Noninfringement	4122	0.0	5.0	17.2	25.8	36.6	79.4	125.1	29.0
Patent invalid	3477	0.0	3.4	12.5	21.5	33.5	75.7	142.2	25.3
Patent unenforceable	139	1.8	7.0	18.2	35.9	54.5	79.0	96.3	36.9
Damages	1634	0.2	2.9	14.3	26.7	40.6	85.1	134.2	30.3
TRO/Prelim Injct	2398			0.7	1.4	3.2	38.9	75.0	5.8
Injct/Ongoing Royalty	7129	0.2	1.4	6.4	14.3	28.7	65.1	123.2	19.4
Enhncd Dam/Atty Fees	802	1.9	4.6	13.5	25.2	45.4	85.8	114.3	31.7
Sanctions	390	1.6	4.2	11.7	19.9	31.3	71.9	118.3	24.6
Jury Trial	1555	0.8	10.0	23.0	30.7	44.9	84.9	125.3	36.0
Bench Trial	388	4.6	8.8	26.8	32.5	40.1	77.3	102.9	34.6
Transfer	2841	-0.0	0.8	4.3	7.4	11.5	28.0	70.1	8.8
Stay	9306		1.2	4.9	9.8	17.5	56.9	120.9	13.8
Likely Settlement	32781		0.4	3.0	5.2	9.7	33.7	92.8	7.8
Mature Termination	13830		1.7	8.1	15.8	28.4	71.2	142.2	20.7
Appeal	4190	-24.4	3.2	14.3	26.5	40.0	83.3	143.1	29.7

Patent Trial and Appeal Board

	Occurrences	Minimum	2nd Percentile	First Quartile	Median	Third Quartile	98th Percentile	Maximum	Average
Prelim. Response	8888		2.2	3.2	3.4	3.7	5.2	34.9	3.6
Response	4547	0.9	5.2	8.8	9.3	9.9	15.3	57.2	9.6
Reply	3878	1.1	4.4	11.5	12.2	12.9	16.3	60.9	12.1
Institution Decision	9079	0.5	3.1	5.8	6.2	6.4	7.8	39.7	6.1
Claims Upheld	1085	5.8	14.7	17.6	18.1	18.4	42.3	72.0	18.9
Claims Unpatentable	2976	0.9	7.1	17.0	17.9	18.3	25.9	57.7	17.3
Oral Hearing	3231	-38.2	10.8	14.2	15.0	15.7	18.8	63.6	15.1
Final Written Decision	3155	3.5	13.4	17.4	18.0	18.3	22.3	52.6	17.9
Joinder	846	0.1	1.2	3.3	4.6	6.0	9.9	19.0	4.7
Stay	62	0.4	1.7	6.7	10.7	18.5	36.4	44.5	12.6
Abandonment/Termn.	2997	0.6	1.8	4.1	6.5	10.6	18.7	66.9	8.1
Adverse Judgment	426	0.9	2.7	8.1	9.9	12.6	18.3	68.2	10.5
Appeal	2395	1.0	10.5	19.2	20.0	20.6	36.5	75.0	20.7

International Trade Commission

	Occurrences	Minimum	2nd Percentile	First Quartile	Median	Third Quartile	98th Percentile	Maximum	Average
Claim Construction	275	1.3	5.3	8.5	13.2	17.3	30.4	79.9	13.9
Patentee MSD	56	5.7	7.1	9.1	10.5	12.4	20.5	20.5	11.1
Infringement	596	5.7	8.8	13.4	15.4	19.1	29.4	79.9	16.8
Patent not invalid	646	5.1	6.7	13.4	15.6	18.8	26.7	30.0	16.0
Patent enforceable	109	5.7	7.8	12.4	14.5	17.3	24.7	24.7	15.1
Patent Challenger MSD	218	3.0	4.7	8.3	9.4	11.6	19.8	32.7	10.2
Noninfringement	545	6.0	9.1	14.1	17.0	20.2	33.7	79.9	18.0
Patent invalid	289	4.9	7.6	13.6	17.1	20.0	30.0	30.9	17.2
Patent unenforceable	7	8.7			18.6			19.4	17.5
Sanctions	7	9.9			16.2			34.2	17.6
Cease & Desist	898	7.5	11.3	14.1	17.0	19.2	29.4	45.7	17.3
Gen. Exclusion Order	878	7.4	9.9	13.0	16.6	17.5	21.5	24.9	15.6
Ltd. Exclusion Order	1090	2.7	7.4	14.2	17.4	19.7	28.6	45.7	17.5
Civil Penalty	13	17.4	17.8	22.9	34.7	70.8	79.9	79.9	41.7
Seizure & Forfeiture	250	17.4	17.8	25.7	56.0	79.6	116.3	162.2	56.5
Initial Determination	151	0.0	4.6	13.0	15.4	18.0	40.9	93.1	17.3
Review of Init. Det.	107	2.8	5.7	11.0	16.8	19.8	37.7	58.9	16.9
Final Determination	31	4.9	11.9	14.0	15.7	19.7	54.3	54.3	21.1
Review of Final Det.	132	14.0	15.3	18.4	20.7	23.2	37.9	45.7	22.0
Stay	181	0.0	1.2	4.2	6.6	9.3	18.6	27.3	7.1