



US008032911B2

(12) **United States Patent**  
**Ohkita**

(10) **Patent No.:** **US 8,032,911 B2**

(45) **Date of Patent:** **Oct. 4, 2011**

(54) **RELAY DEVICE AND RELAY METHOD**

FOREIGN PATENT DOCUMENTS

- (75) Inventor: **Hideki Ohkita**, Kunitachi (JP)
- (73) Assignee: **Kabushiki Kaisha Toshiba**, Tokyo (JP)
- (\*) Notice: Subject to any disclaimer, the term of this patent is extended or adjusted under 35 U.S.C. 154(b) by 65 days.

JP	H10-200583	A	7/1998
JP	2004-274608	A	9/2004
JP	2008-034976		2/2008
JP	2008-035190		2/2008
JP	2008-153826	A	7/2008
JP	2008-153974	A	7/2008
JP	2008153974	A	* 7/2008
WO	WO 2005/006740	A1	1/2005
WO	WO 2007/136038	A1	11/2007

(21) Appl. No.: **12/463,928**

OTHER PUBLICATIONS

(22) Filed: **May 11, 2009**

'High-Definition Multimedia Interface Specification', Jun. 22, 2006, Version 1.3, pp. 123-125.\*

(65) **Prior Publication Data**

Explanation of Non-English Language Reference(s).

US 2009/0288130 A1 Nov. 19, 2009

\* cited by examiner

(30) **Foreign Application Priority Data**

*Primary Examiner* — William Trost, IV  
*Assistant Examiner* — Omar S Parra

May 13, 2008 (JP) ..... 2008-126081

(74) *Attorney, Agent, or Firm* — Knobbe, Martens, Olson & Bear LLP

(51) **Int. Cl.**

- H74N 7/18* (2006.01)
- G06F 15/16* (2006.01)
- H04L 12/28* (2006.01)
- H04L 12/56* (2006.01)

(57) **ABSTRACT**

- (52) **U.S. Cl.** ..... **725/74; 725/78; 725/80; 709/245; 370/402**
- (58) **Field of Classification Search** ..... **370/402; 709/245; 725/74, 78, 80-82, 85**  
See application file for complete search history.

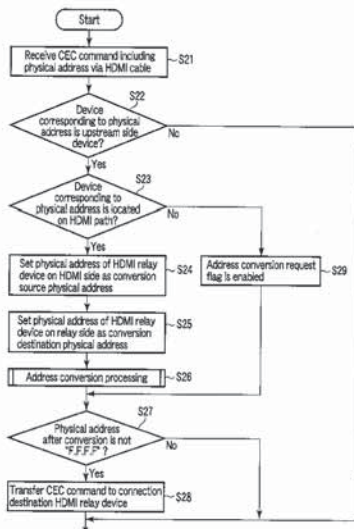
According to one embodiment, a relay device includes an address management module which executes processing of acquiring a first physical address assigned to the relay device based on a sink device, processing of acquiring a second physical address assigned to the relay device based on another sink device, determination processing of determining, in the case where it is determined that the command needs to be transmitted to the other sink device, whether to perform conversion of the physical address included in a parameter in the other sink device, and conversion processing of converting, in the case where it is determined that the conversion of the physical address is not performed in the other sink device, the physical address included in the parameter into a physical address based on the other sink device using the first and second physical addresses.

(56) **References Cited**

U.S. PATENT DOCUMENTS

5,754,548	A *	5/1998	Hoekstra et al.	370/402
7,849,218	B2 *	12/2010	Funabiki et al.	709/245
2003/0161332	A1 *	8/2003	Ohno et al.	370/401
2006/0117367	A1 *	6/2006	Lyle	725/114
2007/0230909	A1	10/2007	Mukaide et al.	
2009/0089842	A1 *	4/2009	Perry et al.	725/78

**14 Claims, 14 Drawing Sheets**



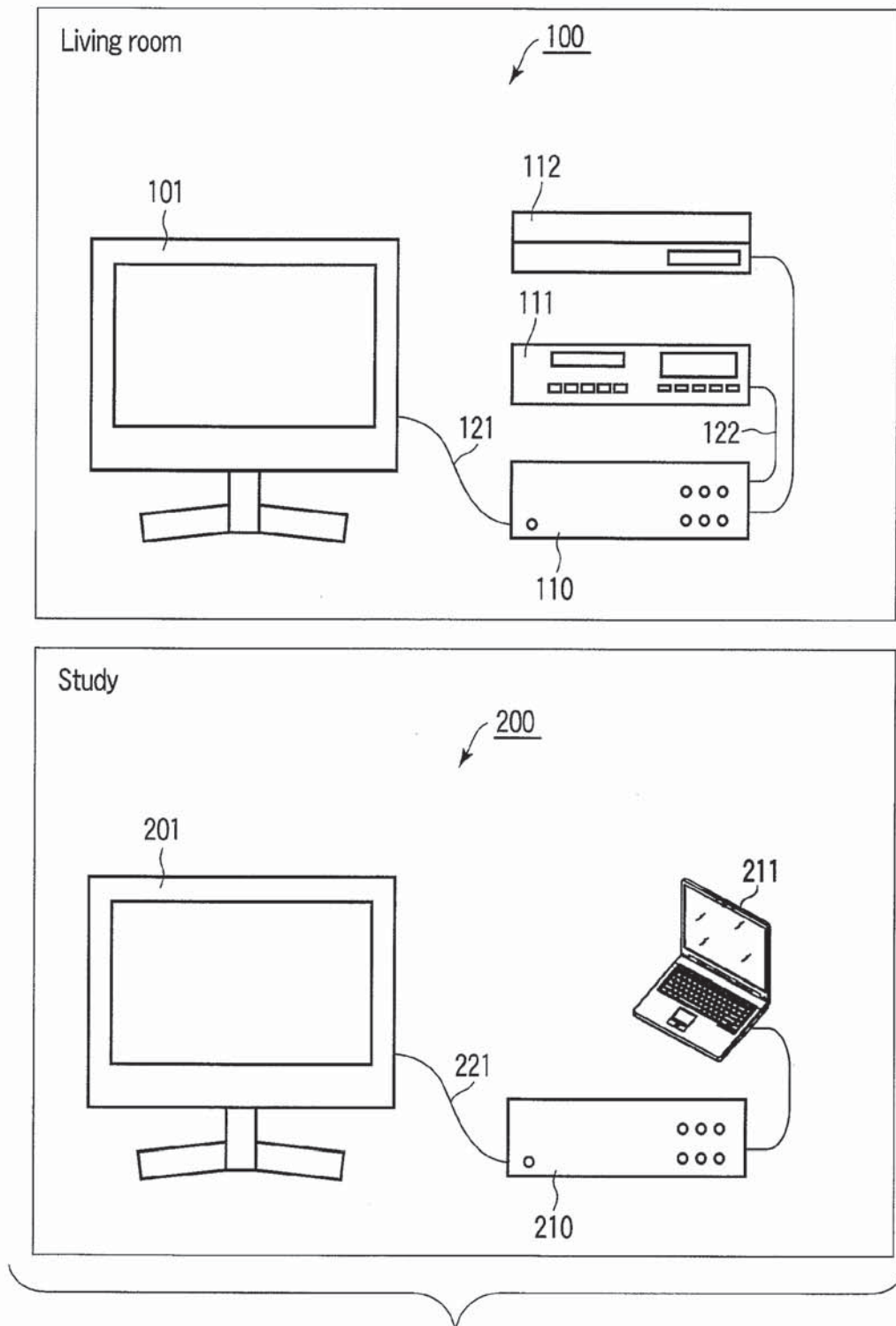


FIG. 1

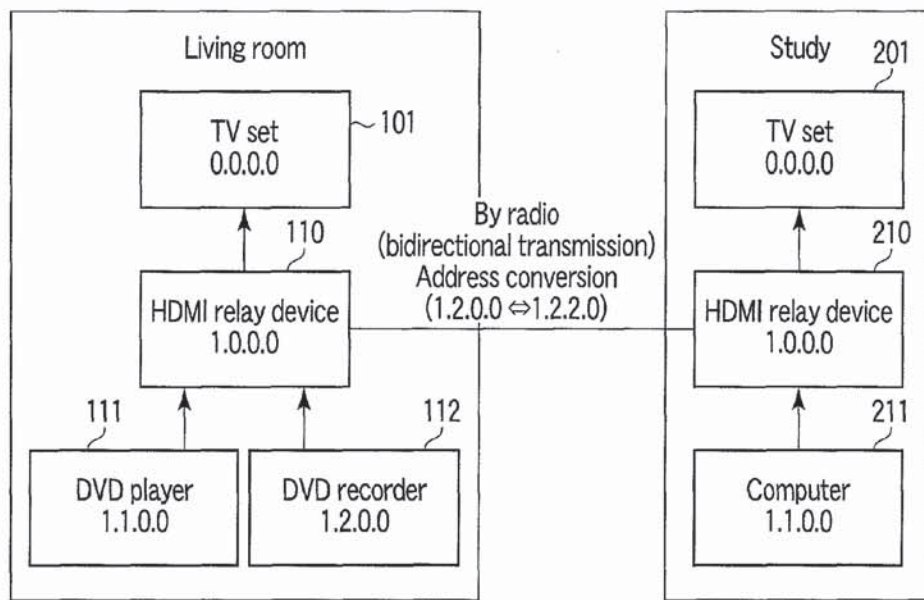


FIG. 2

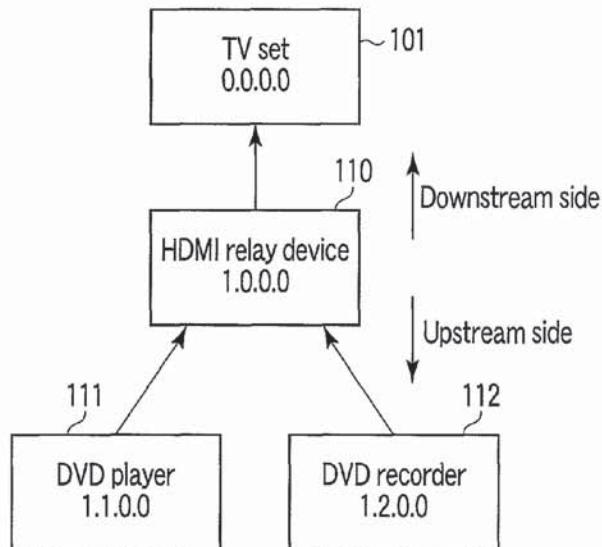


FIG. 3

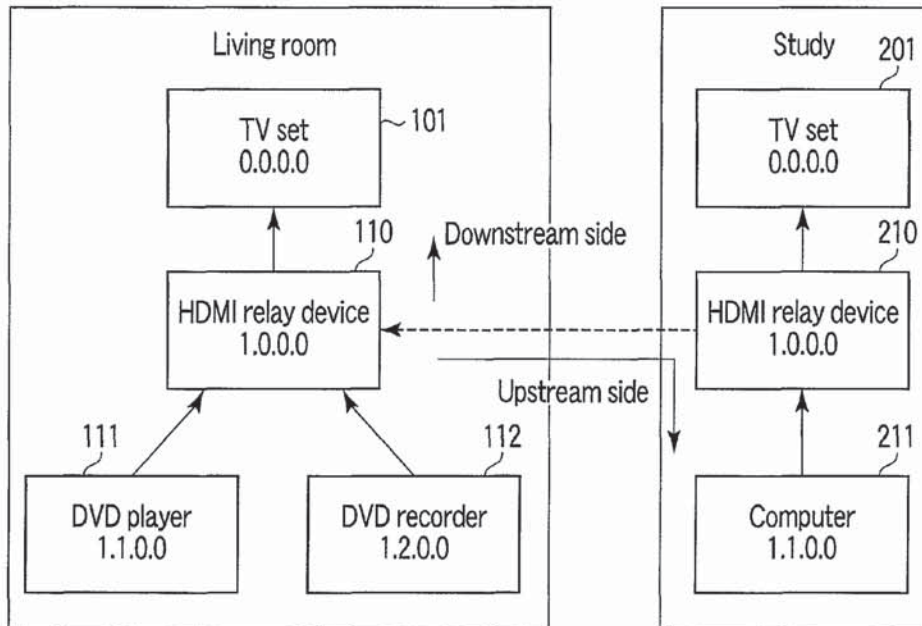


FIG. 4

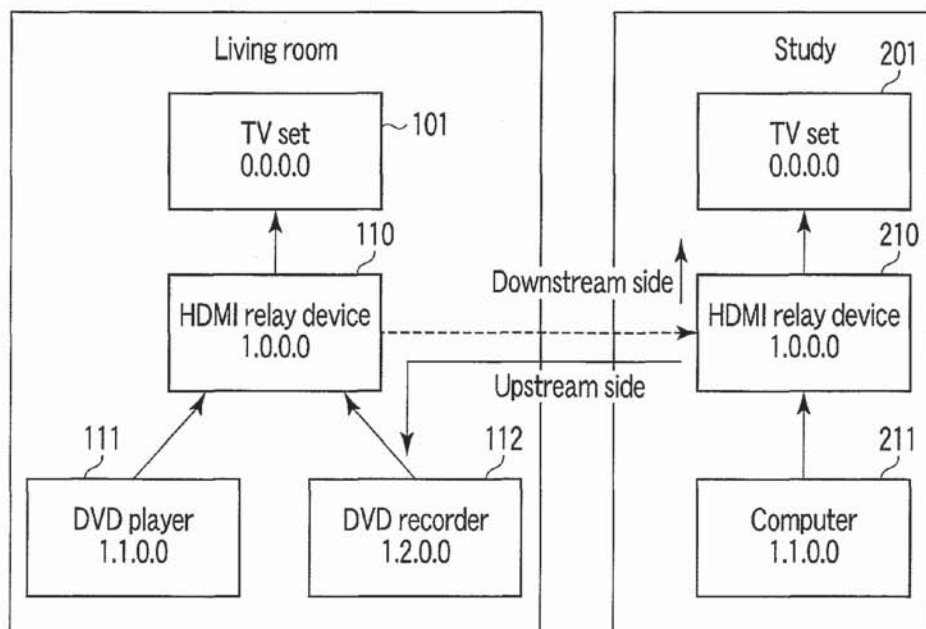


FIG. 5

FIG. 6A

Hierarchy as viewed from TV in living room

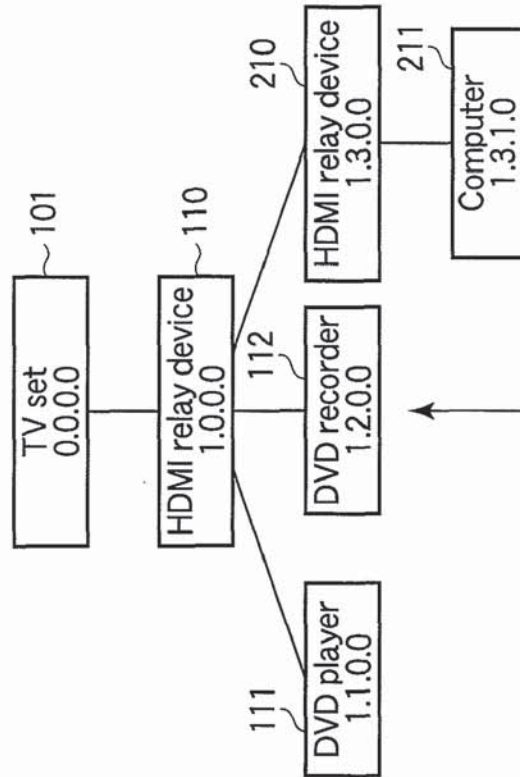
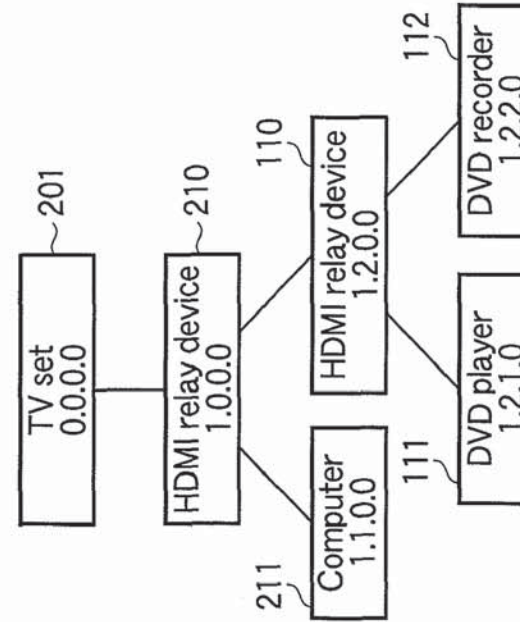


FIG. 6B

Hierarchy as viewed from TV in study



Physical address differs → Physical address needs to be converted  
(1.2.0.0 ↔ 1.2.2.0)

# Explore Litigation Insights

Docket Alarm provides insights to develop a more informed litigation strategy and the peace of mind of knowing you're on top of things.

## Real-Time Litigation Alerts



Keep your litigation team up-to-date with **real-time alerts** and advanced team management tools built for the enterprise, all while greatly reducing PACER spend.

Our comprehensive service means we can handle Federal, State, and Administrative courts across the country.

## Advanced Docket Research



With over 230 million records, Docket Alarm's cloud-native docket research platform finds what other services can't. Coverage includes Federal, State, plus PTAB, TTAB, ITC and NLRB decisions, all in one place.

Identify arguments that have been successful in the past with full text, pinpoint searching. Link to case law cited within any court document via Fastcase.

## Analytics At Your Fingertips



Learn what happened the last time a particular judge, opposing counsel or company faced cases similar to yours.

Advanced out-of-the-box PTAB and TTAB analytics are always at your fingertips.

## API

Docket Alarm offers a powerful API (application programming interface) to developers that want to integrate case filings into their apps.

## LAW FIRMS

Build custom dashboards for your attorneys and clients with live data direct from the court.

Automate many repetitive legal tasks like conflict checks, document management, and marketing.

## FINANCIAL INSTITUTIONS

Litigation and bankruptcy checks for companies and debtors.

## E-DISCOVERY AND LEGAL VENDORS

Sync your system to PACER to automate legal marketing.