

(12) **United States Patent**
Dvir et al.

(10) **Patent No.:** **US 6,557,001 B1**
(45) **Date of Patent:** **Apr. 29, 2003**

(54) **METHOD FOR ENHANCING VIDEO COMPRESSION THROUGH AUTOMATIC DATA ANALYSIS AND PROFILE SELECTION**

(75) Inventors: **Ira Dvir**, Tel Aviv (IL); **Yoav Medan**, Haifa (IL)

(73) Assignee: **Moonlight Cordless Ltd.**, Ramat Gan (IL)

(*) Notice: Subject to any disclaimer, the term of this patent is extended or adjusted under 35 U.S.C. 154(b) by 0 days.

(21) Appl. No.: **09/438,500**

(22) Filed: **Nov. 12, 1999**

Related U.S. Application Data

(63) Continuation-in-part of application No. 09/197,441, filed on Nov. 23, 1998.

(51) **Int. Cl.**⁷ **G06F 17/30**

(52) **U.S. Cl.** **707/101**

(58) **Field of Search** 707/3, 101, 104.1, 707/500, 500.1; 370/465; 375/240; 345/502, 723; 709/200, 217, 231

(56) **References Cited**

U.S. PATENT DOCUMENTS

- 5,706,290 A * 1/1998 Shaw et al. 345/723
- 6,202,060 B1 * 3/2001 Tran 707/104.1
- 6,356,945 B1 * 3/2002 Shaw et al. 375/240

* cited by examiner

Primary Examiner—Diane D. Mizrahi

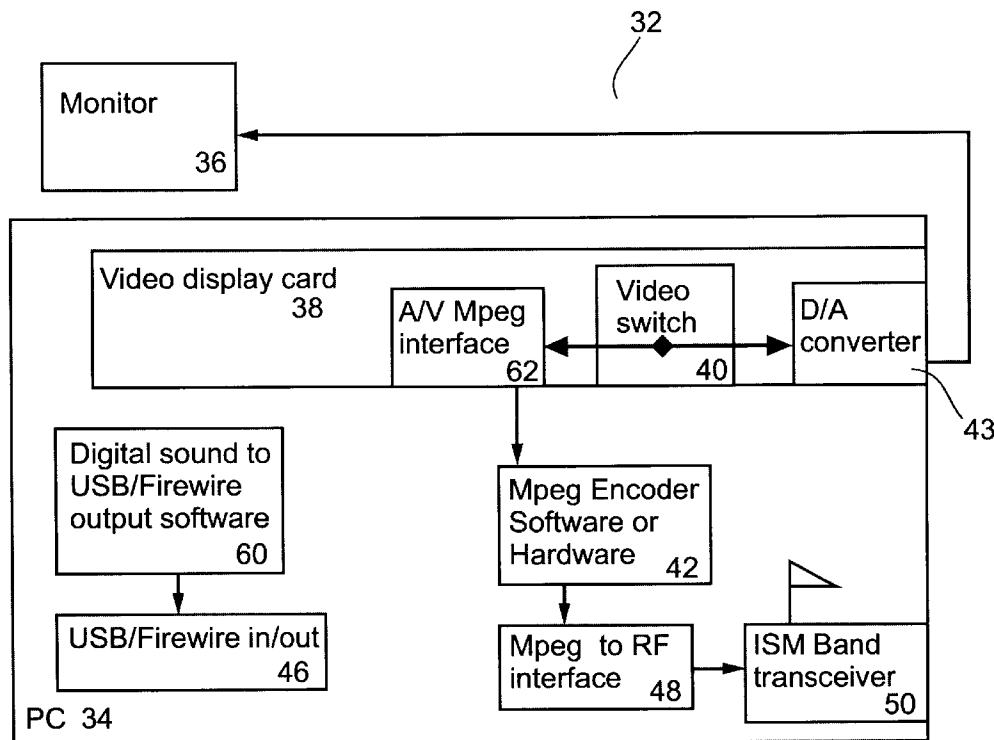
Assistant Examiner—Apu Mofiz

(74) *Attorney, Agent, or Firm*—G. E. Ehrlich Ltd.

(57) **ABSTRACT**

A system and method for rapid video data compression and transmission for a wireless remote monitor. The compression method is adjusted according to the type of software application which generated the video data, and according to the characteristics of the data itself. Preferably, the type and profile of video data compression is selected by a profile manager, which detects the characteristics of the video data to determine the character of the data, and then which selects the video data compression method and profile according to the video data character. The compression method and system may be used with a device for remotely displaying information from a monitor of a main computer and for remotely and fully controlling the main computer.

26 Claims, 5 Drawing Sheets



Internal implementation

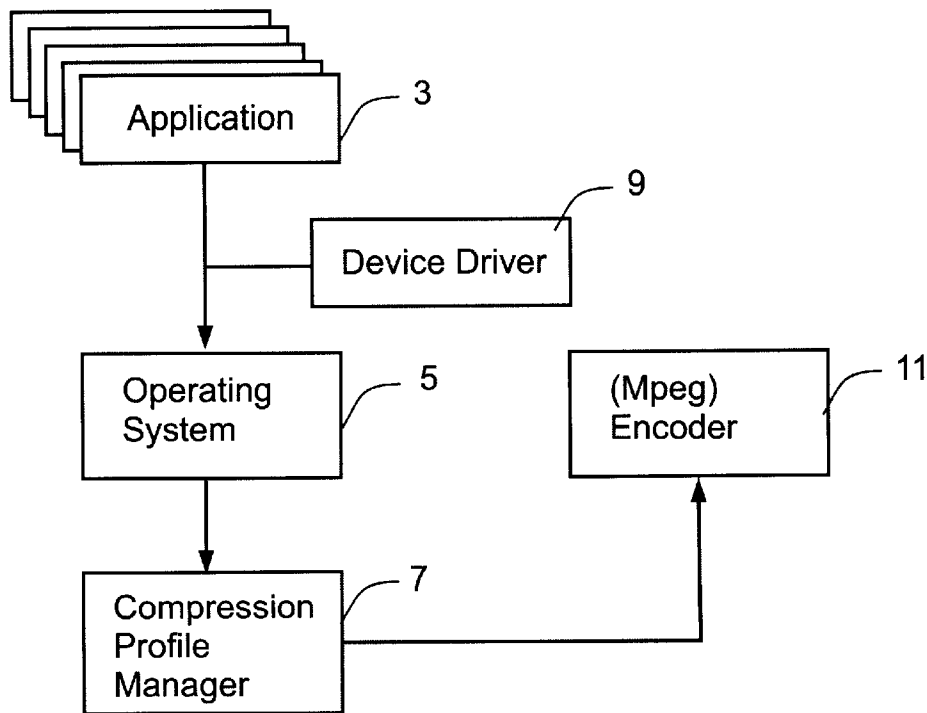


Fig. 1a

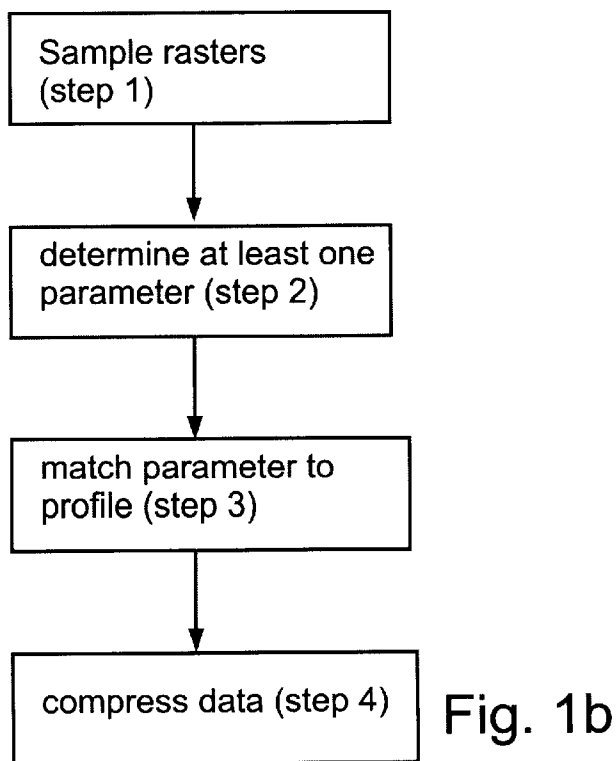


Fig. 1b

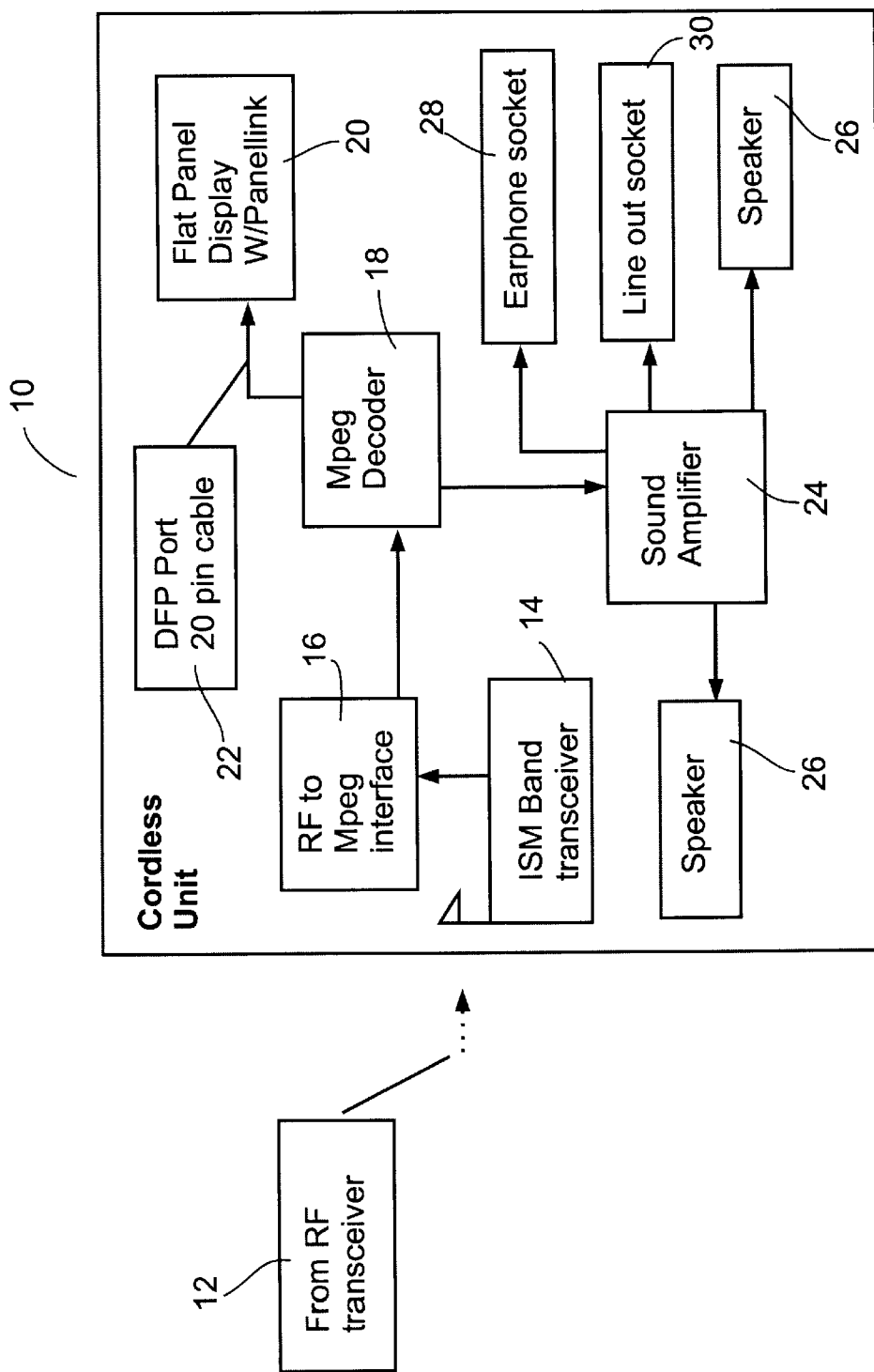


Fig. 2

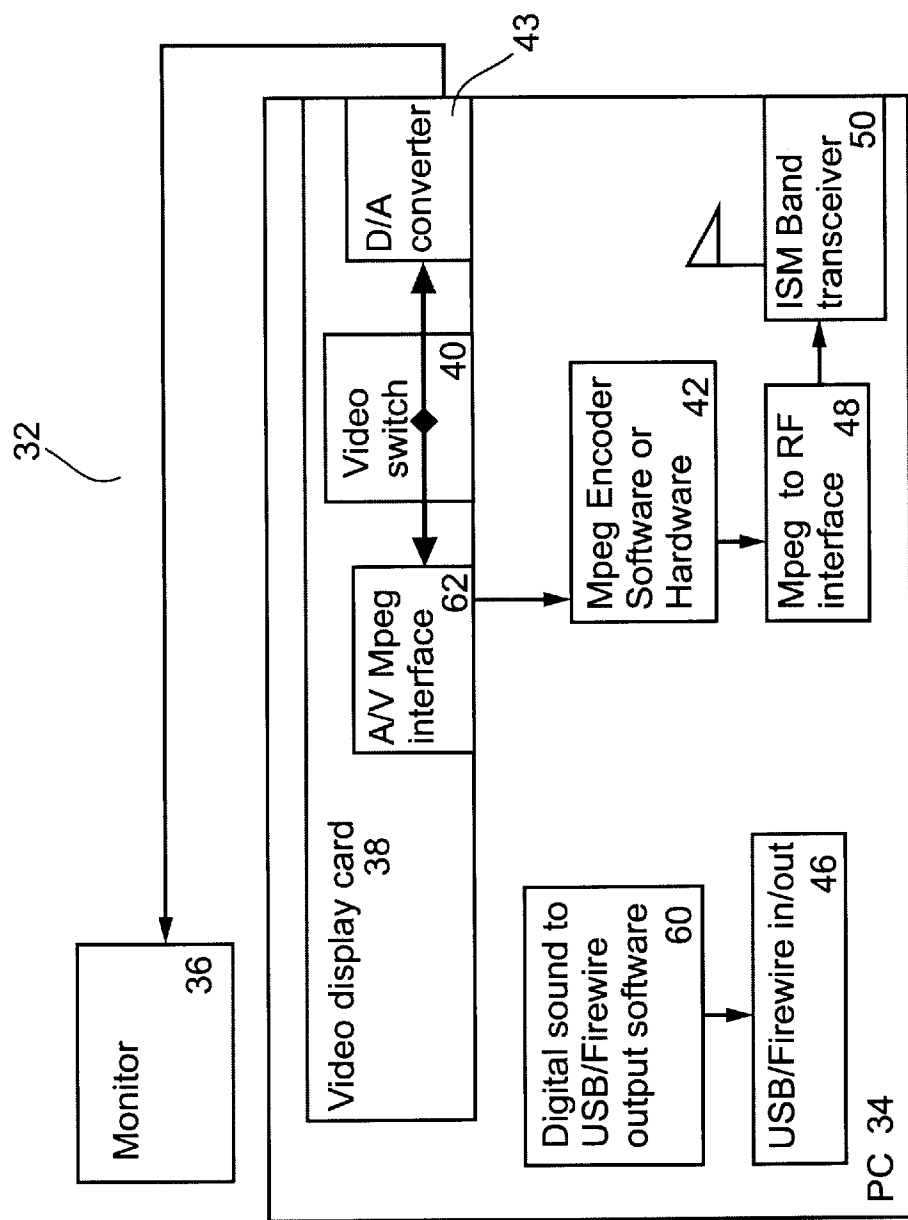


Fig. 3a
Internal implementation

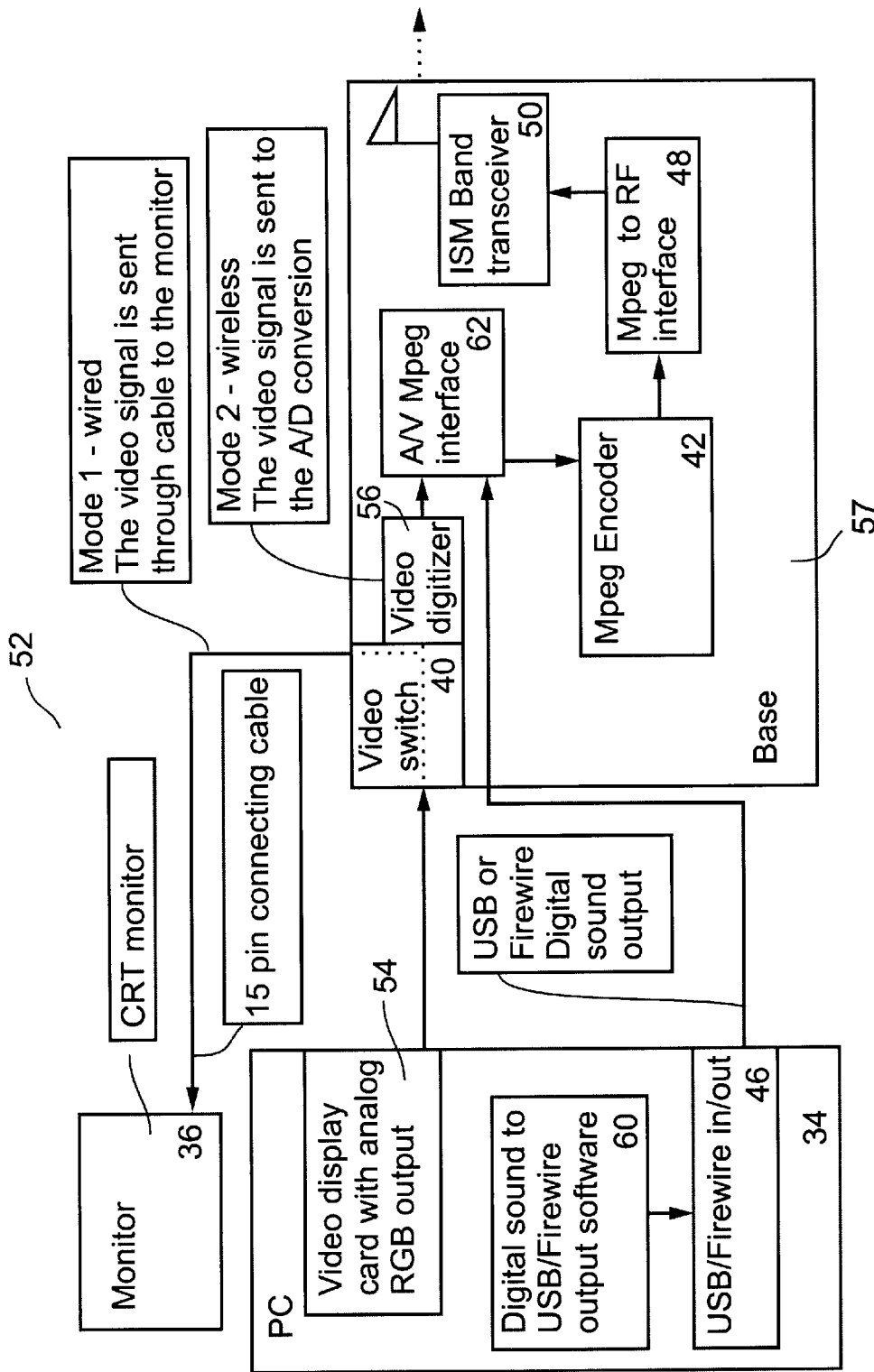


Fig. 3b
External Analog RGB implementation

Explore Litigation Insights

Docket Alarm provides insights to develop a more informed litigation strategy and the peace of mind of knowing you're on top of things.

Real-Time Litigation Alerts



Keep your litigation team up-to-date with **real-time alerts** and advanced team management tools built for the enterprise, all while greatly reducing PACER spend.

Our comprehensive service means we can handle Federal, State, and Administrative courts across the country.

Advanced Docket Research



With over 230 million records, Docket Alarm's cloud-native docket research platform finds what other services can't. Coverage includes Federal, State, plus PTAB, TTAB, ITC and NLRB decisions, all in one place.

Identify arguments that have been successful in the past with full text, pinpoint searching. Link to case law cited within any court document via Fastcase.

Analytics At Your Fingertips



Learn what happened the last time a particular judge, opposing counsel or company faced cases similar to yours.

Advanced out-of-the-box PTAB and TTAB analytics are always at your fingertips.

API

Docket Alarm offers a powerful API (application programming interface) to developers that want to integrate case filings into their apps.

LAW FIRMS

Build custom dashboards for your attorneys and clients with live data direct from the court.

Automate many repetitive legal tasks like conflict checks, document management, and marketing.

FINANCIAL INSTITUTIONS

Litigation and bankruptcy checks for companies and debtors.

E-DISCOVERY AND LEGAL VENDORS

Sync your system to PACER to automate legal marketing.