

(12) **United States Patent**  
**Hsu**

(10) **Patent No.:** **US 6,345,043 B1**  
(45) **Date of Patent:** **Feb. 5, 2002**

(54) **ACCESS SCHEME FOR A WIRELESS LAN STATION TO CONNECT AN ACCESS POINT**

6,088,591 A \* 7/2000 Trompower et al. .... 370/331  
6,256,334 B1 \* 7/2001 Adachi ..... 370/310  
6,259,898 B1 \* 7/2001 Lewis ..... 370/338

(75) Inventor: **Yi-Shou Hsu, Hsinchu (TW)**

\* cited by examiner

(73) Assignee: **National Datacomm Corporation, Hsinchu (TW)**

(\* ) Notice: Subject to any disclaimer, the term of this patent is extended or adjusted under 35 U.S.C. 154(b) by 0 days.

*Primary Examiner*—Wellington Chin  
*Assistant Examiner*—Maikhanh Tran

(57) **ABSTRACT**

An access scheme for a wireless LAN station to connect an access point on the network. This scheme allows a wireless station to finish all the processes from search to registration with an AP at a very high speed. Firstly, the time interval of beacon transmission is shortened when a wireless station is powered on. Secondly, the authentication phase in traditional registration with an AP is eliminated. Instead, a period of time on each channel is reserved. Accordingly, the wireless LAN station can use this period to exchange control frames with the AP without competing with other stations to access wireless medium. This results in quick access to the network.

(21) Appl. No.: **09/110,829**

(22) Filed: **Jul. 6, 1998**

(51) **Int. Cl.**<sup>7</sup> ..... **H04B 7/212; H04J 3/06; H04Q 7/20**

(52) **U.S. Cl.** ..... **370/324; 370/350; 370/509; 455/161.1; 455/403; 455/435**

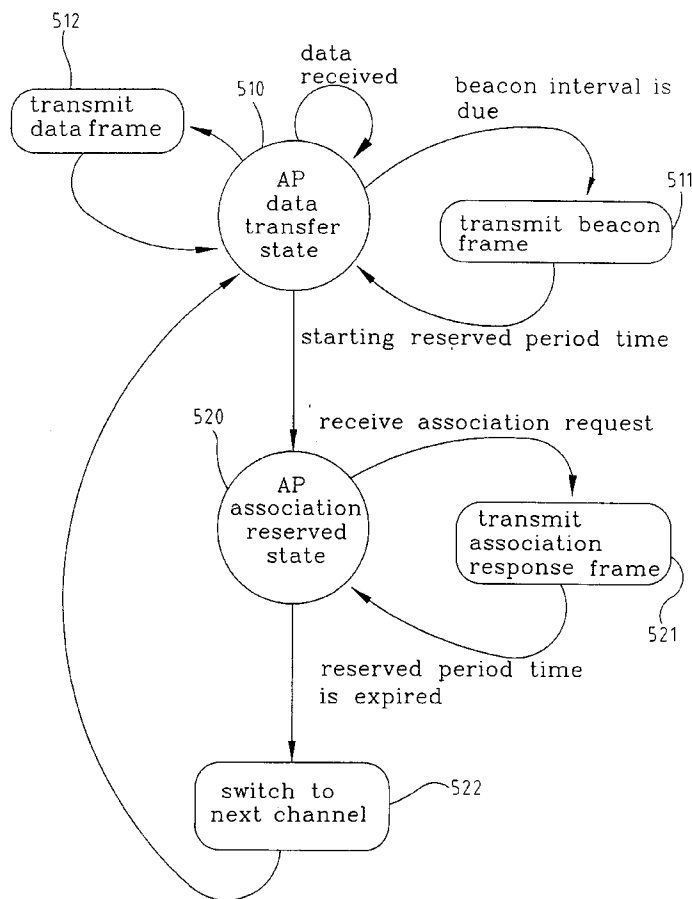
(58) **Field of Search** ..... **370/310, 324, 370/328, 347, 350, 498, 503, 509, 512-514; 455/403, 435, 161.1**

(56) **References Cited**

**U.S. PATENT DOCUMENTS**

5,844,900 A \* 12/1998 Hong et al. .... 370/342

**2 Claims, 6 Drawing Sheets**



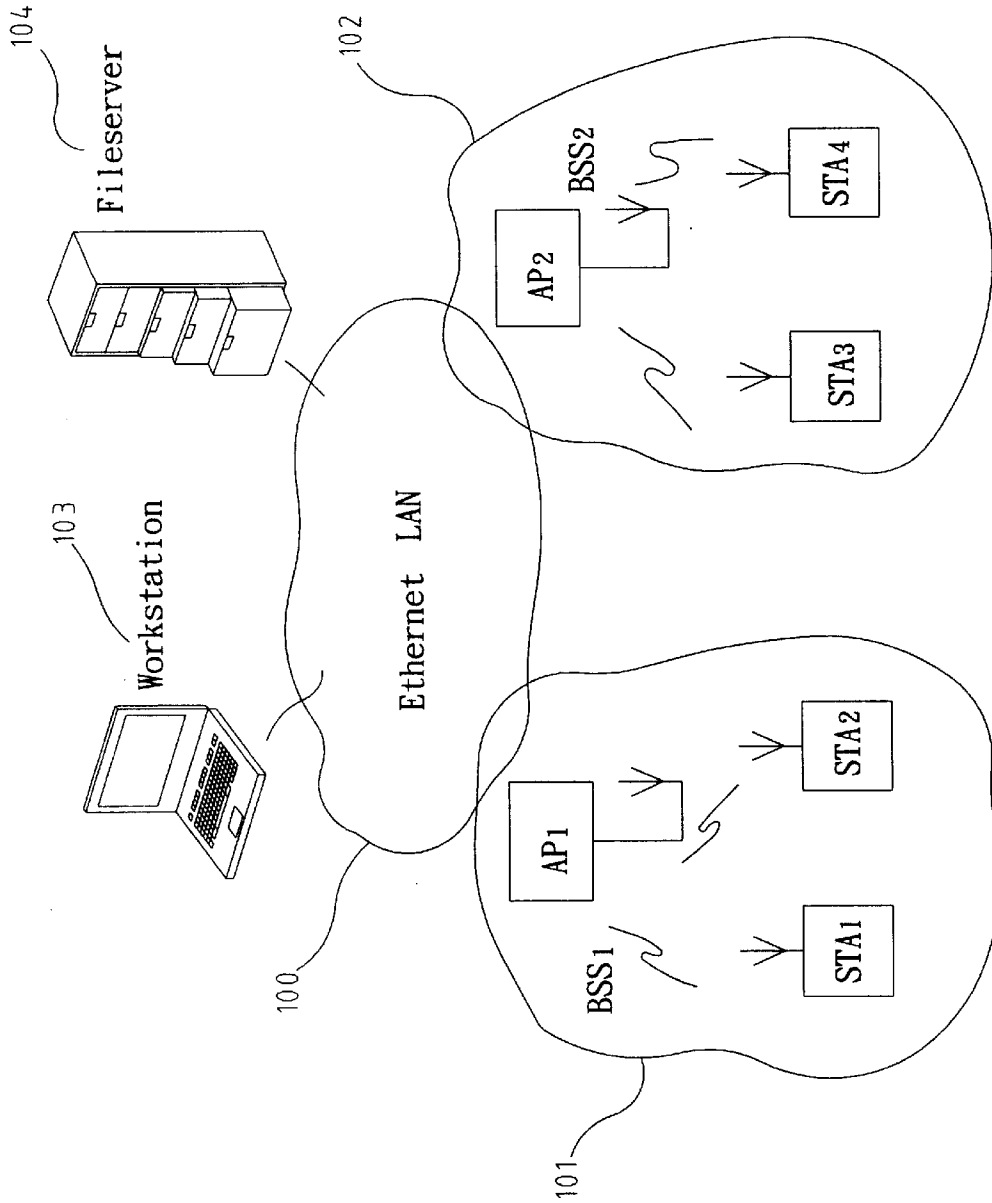


FIG. 1

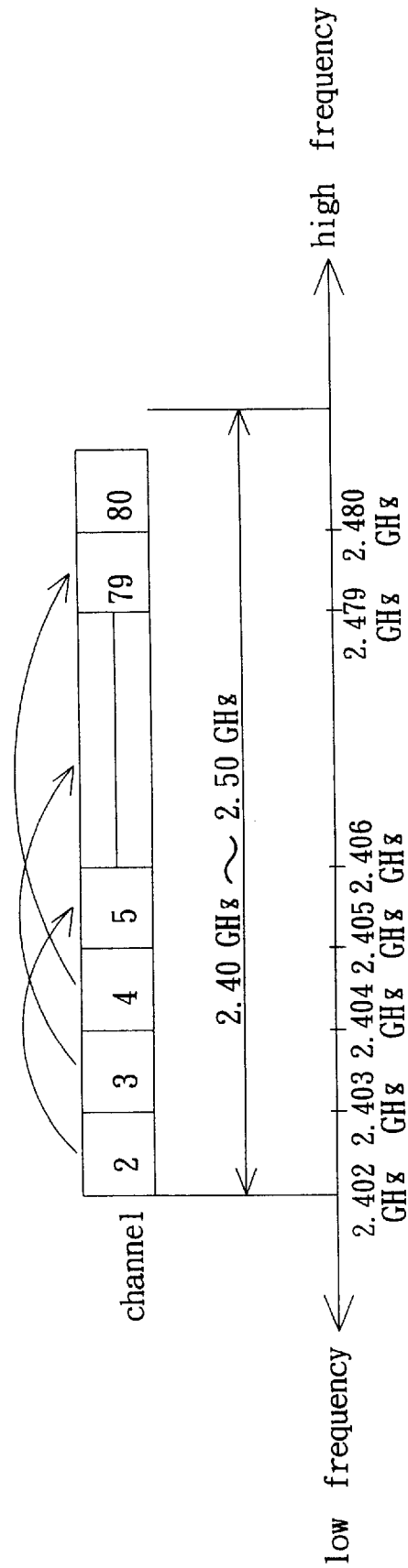
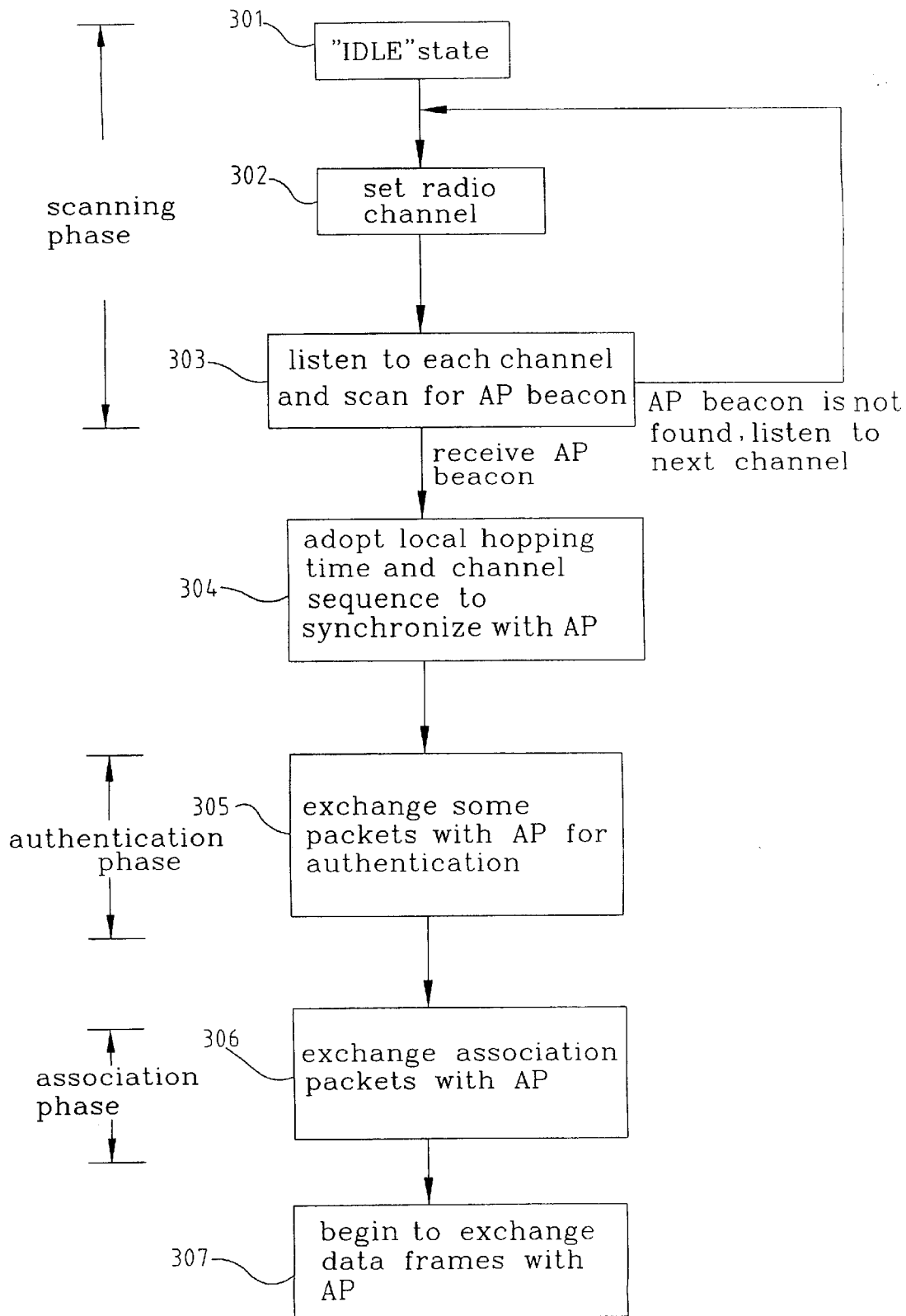


FIG. 2



**FIG. 3 (Prior Art)**

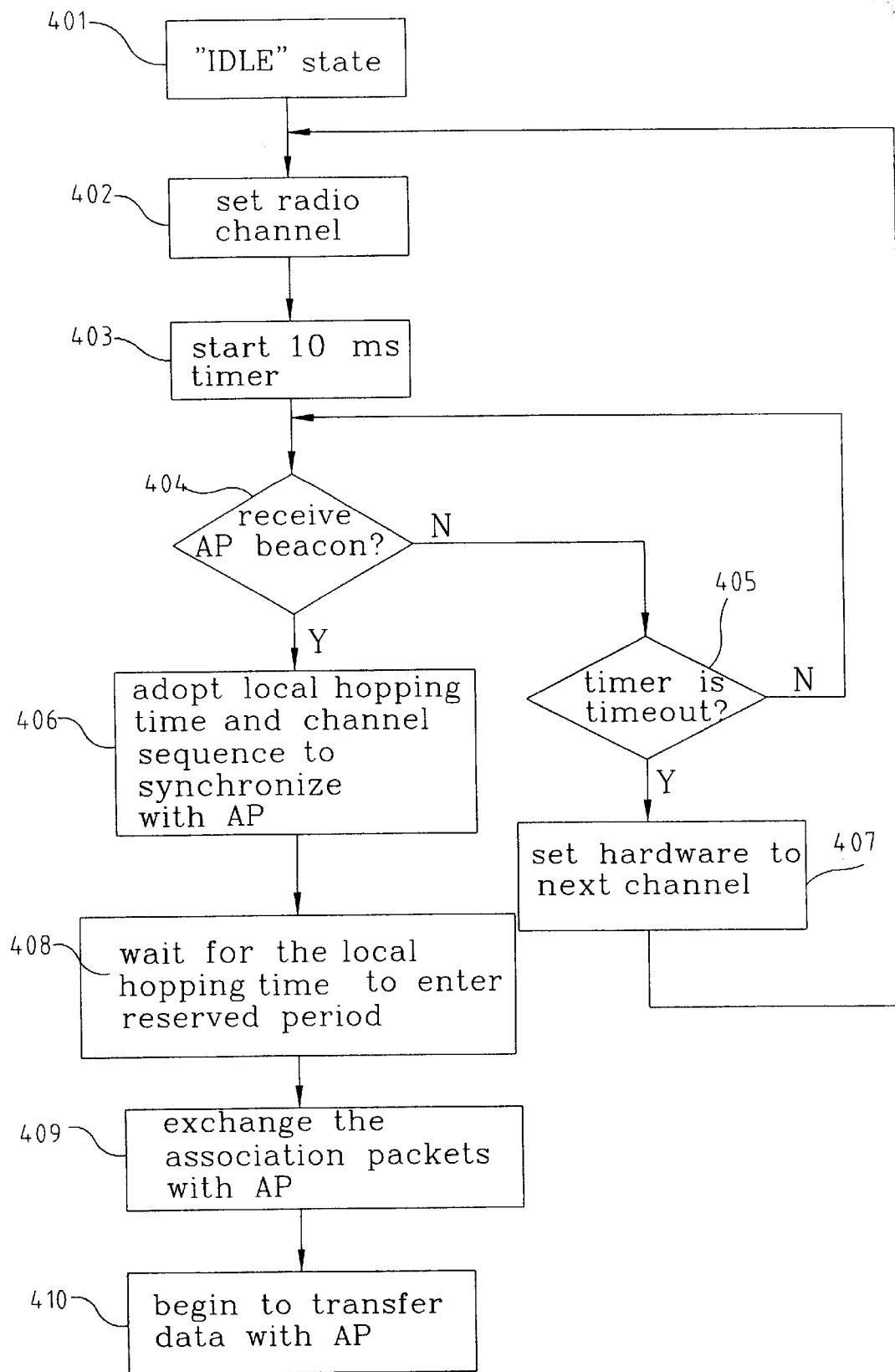


FIG. 4

# Explore Litigation Insights

Docket Alarm provides insights to develop a more informed litigation strategy and the peace of mind of knowing you're on top of things.

## Real-Time Litigation Alerts



Keep your litigation team up-to-date with **real-time alerts** and advanced team management tools built for the enterprise, all while greatly reducing PACER spend.

Our comprehensive service means we can handle Federal, State, and Administrative courts across the country.

## Advanced Docket Research



With over 230 million records, Docket Alarm's cloud-native docket research platform finds what other services can't. Coverage includes Federal, State, plus PTAB, TTAB, ITC and NLRB decisions, all in one place.

Identify arguments that have been successful in the past with full text, pinpoint searching. Link to case law cited within any court document via Fastcase.

## Analytics At Your Fingertips



Learn what happened the last time a particular judge, opposing counsel or company faced cases similar to yours.

Advanced out-of-the-box PTAB and TTAB analytics are always at your fingertips.

## API

Docket Alarm offers a powerful API (application programming interface) to developers that want to integrate case filings into their apps.

## LAW FIRMS

Build custom dashboards for your attorneys and clients with live data direct from the court.

Automate many repetitive legal tasks like conflict checks, document management, and marketing.

## FINANCIAL INSTITUTIONS

Litigation and bankruptcy checks for companies and debtors.

## E-DISCOVERY AND LEGAL VENDORS

Sync your system to PACER to automate legal marketing.