



- [54] **METHOD AND APPARATUS FOR ASSIGNING SPECTRUM OF A WIRELESS LOCAL AREA NETWORK**
- [75] Inventors: **Gary M. Jaszewski**, Los Gatos; **David A. Fisher**, Menlo Park; **Richard C. Chambers**, Cupertino, all of Calif.
- [73] Assignee: **3Com Corporation**, Santa Clara, Calif.
- [21] Appl. No.: **08/640,184**
- [22] Filed: **Apr. 30, 1996**
- [51] Int. Cl.⁶ **H04J 1/02**
- [52] U.S. Cl. **370/329; 370/343**
- [58] Field of Search **455/446, 447; 370/343, 310, 328, 329, 330, 332, 338, 342, 431, 480, 464**

Proxim, "What is a Wireless LAN?" (No known publication date).
 Proxim, Home Page, Mar. 1, 1996.
 Proxim, RangeLAN2/7500 Access Point (No known publication date).
 Proxim, RangeLAN2/7200 PCMCIA (No known publication date).
 Proxim, Building Wireless Backbones and Wireless LANs with Range LAN2 and Range LINK (No known publication date).

Primary Examiner—Huy D. Vu
Attorney, Agent, or Firm—Kent R. Richardson; Wilson, Sosini, Goodrich & Rosati

[57] **ABSTRACT**

One embodiment of the invention includes assigning channels to a set of access points coupled to a network. The network includes a set of wireless network nodes. Each access point communicates, using one of the channels, to a subset of the wireless network nodes. Each channel corresponds to a different frequency range in the electromagnetic spectrum. The embodiment includes the following steps. At least a first access point of the set of access points transmits a plurality of messages. A measure of interference between access points communicating on a first channel is determined from the plurality of messages. A second set of channel assignments, that results in a lower amount of interference between access points communicating on the first channel, is determined. The second set of channel assignments is assigned to the set of access points. Thus, non-interfering frequency assignments for the access points can be determined.

[56] **References Cited**

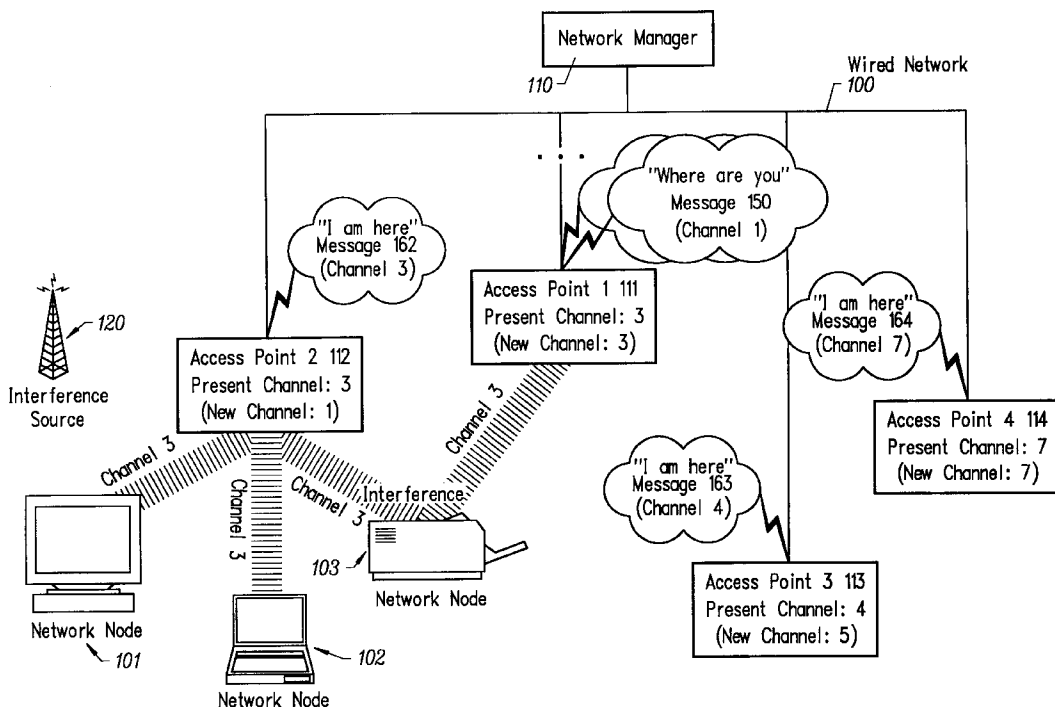
U.S. PATENT DOCUMENTS

5,285,494 2/1994 Sprecher et al. 379/59

OTHER PUBLICATIONS

Chuang, J. C. -I., "Autonomous adaptive frequency assignment for TDMA portable radio systems," IEEE Transactions on Vehicular Technology, vol. 40, Iss. 3, p. 627-35, Aug. 1991.
 Proxim, "Migrating Wireless LANs to 802.11" (No known publication date).
 Proxim, "Selecting a Wireless LAN Technology" (No known publication date).
 Proxim, "The Range LAN2 Site Survey Tool" (No known publication date).

15 Claims, 4 Drawing Sheets



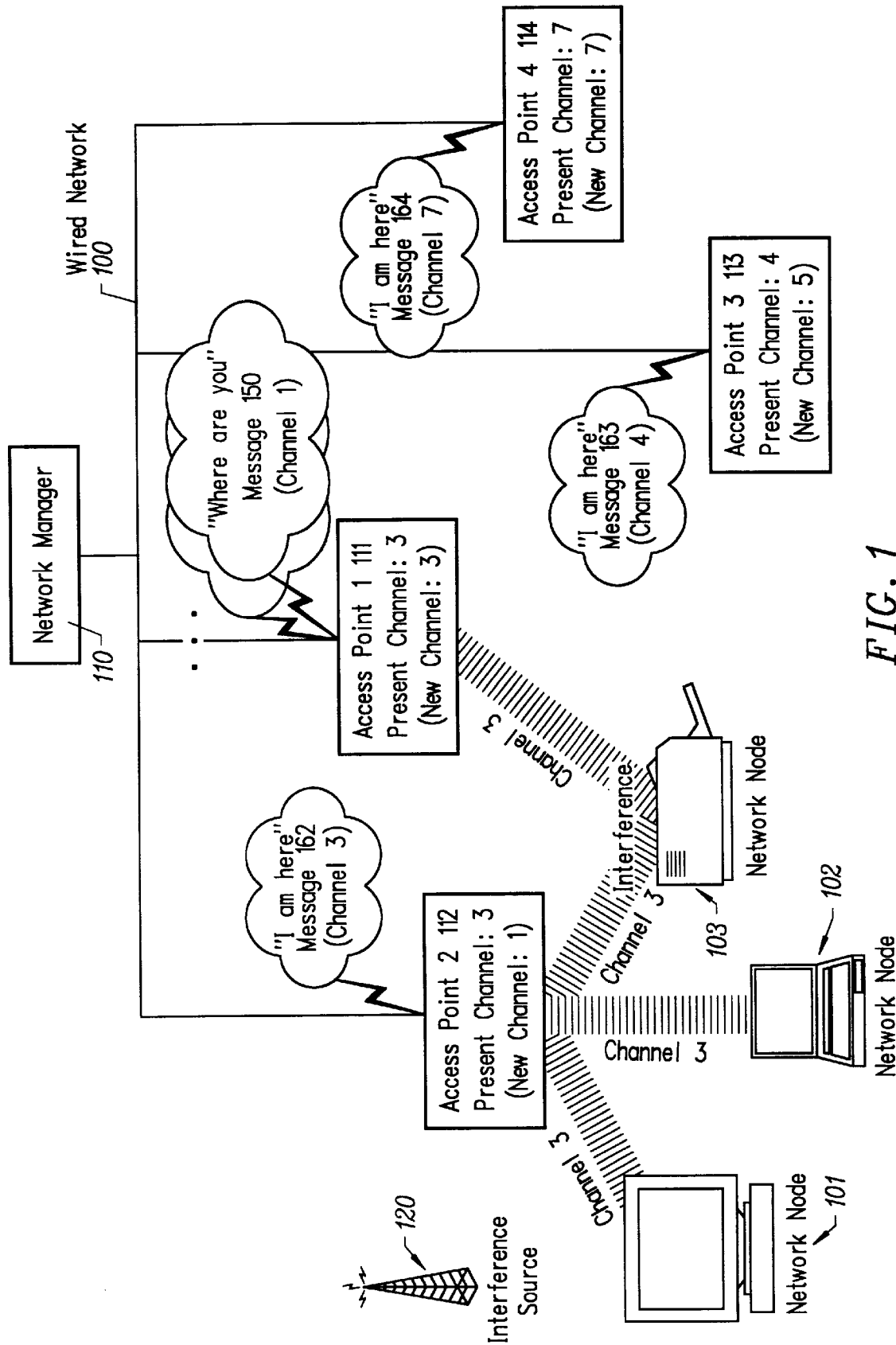


FIG. 1

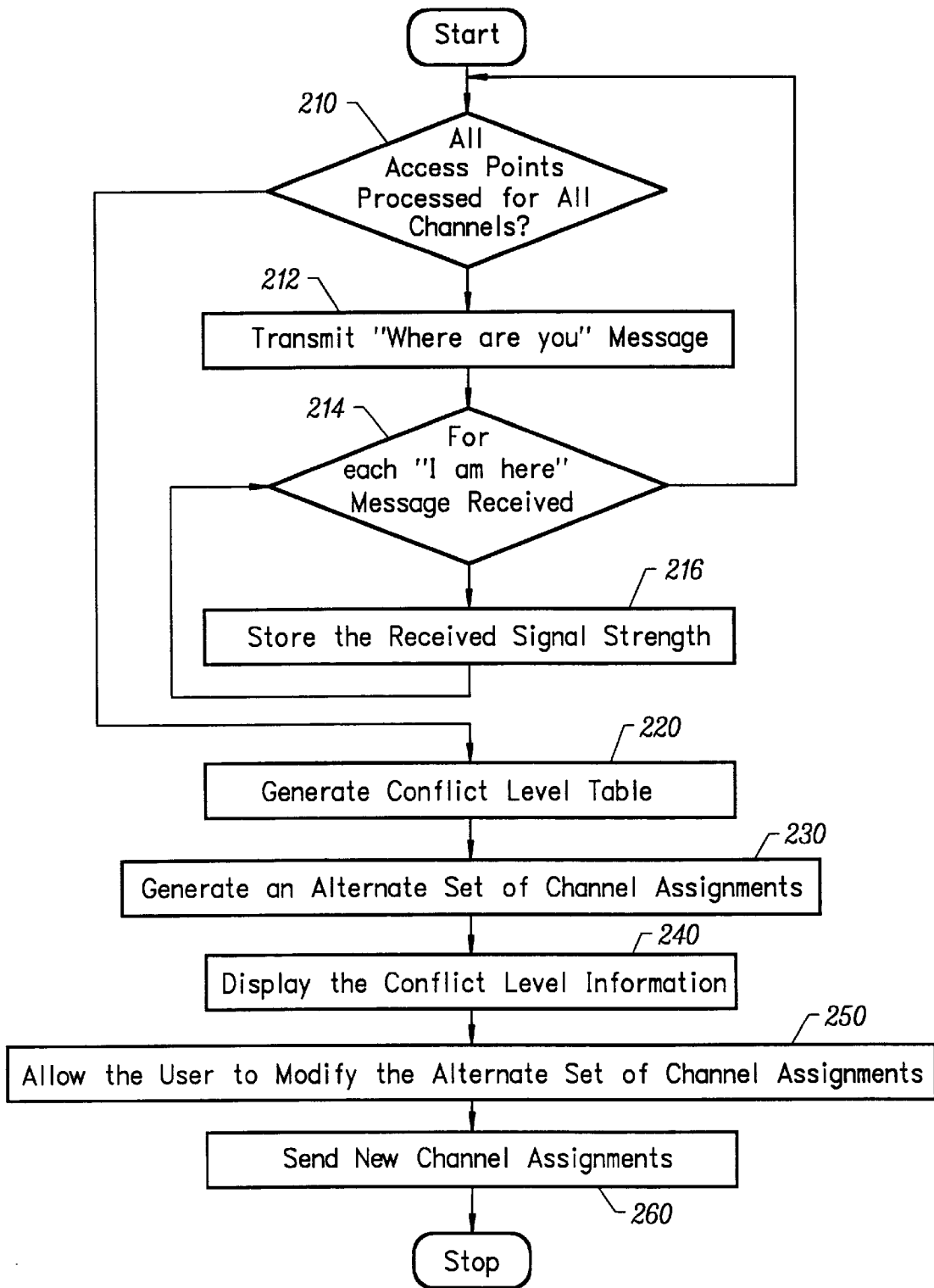


FIG. 2

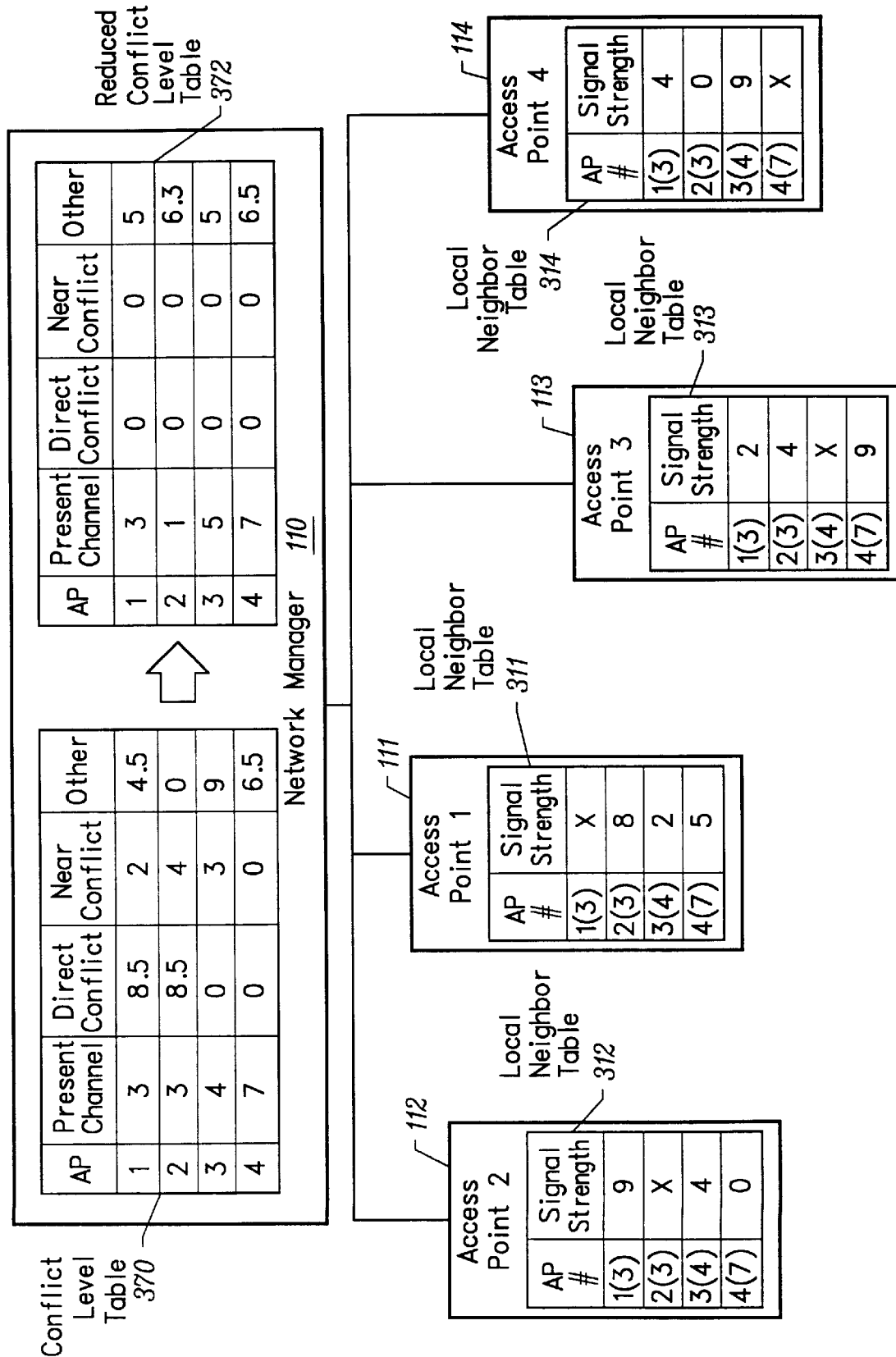


FIG. 3

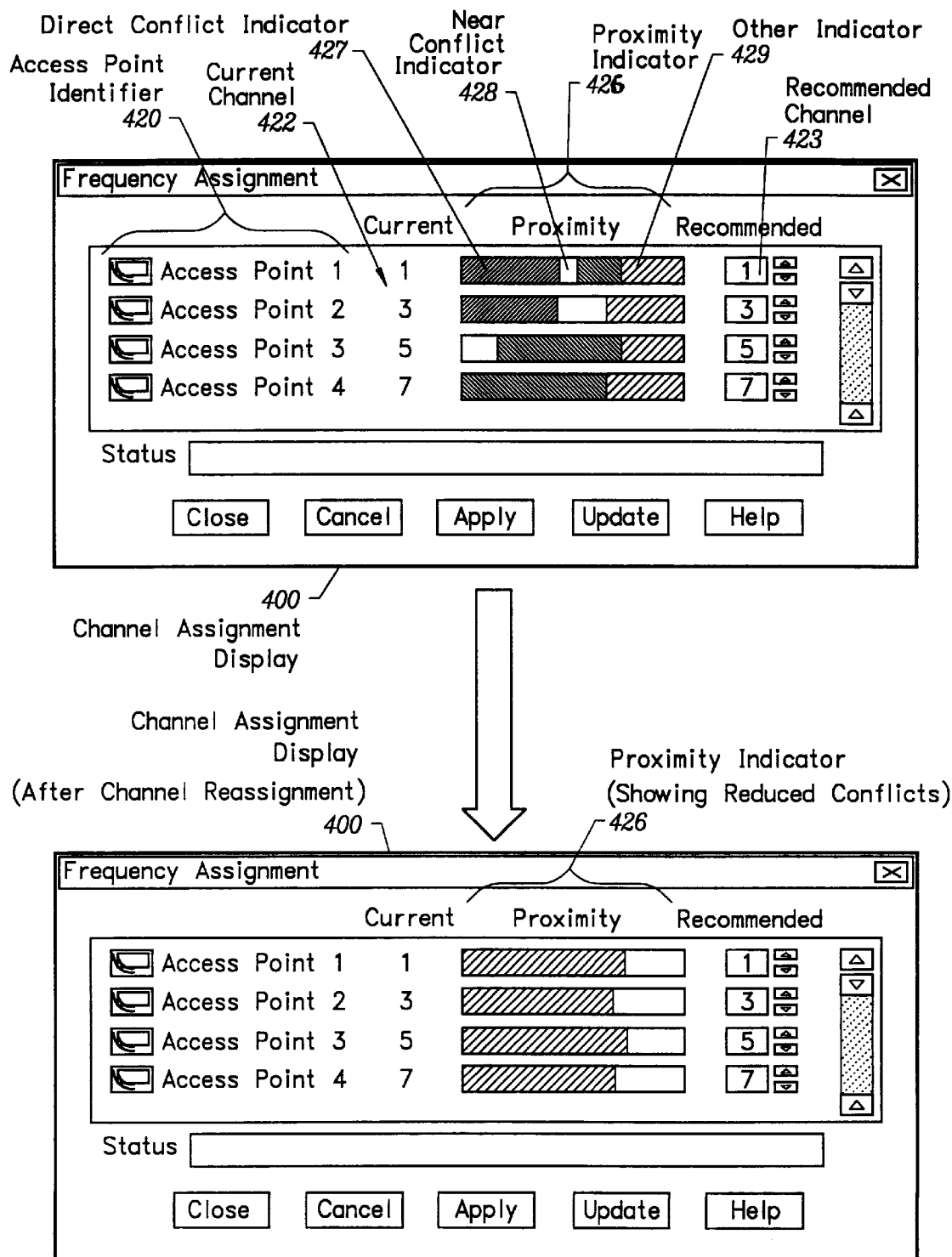


FIG. 4

Explore Litigation Insights

Docket Alarm provides insights to develop a more informed litigation strategy and the peace of mind of knowing you're on top of things.

Real-Time Litigation Alerts



Keep your litigation team up-to-date with **real-time alerts** and advanced team management tools built for the enterprise, all while greatly reducing PACER spend.

Our comprehensive service means we can handle Federal, State, and Administrative courts across the country.

Advanced Docket Research



With over 230 million records, Docket Alarm's cloud-native docket research platform finds what other services can't. Coverage includes Federal, State, plus PTAB, TTAB, ITC and NLRB decisions, all in one place.

Identify arguments that have been successful in the past with full text, pinpoint searching. Link to case law cited within any court document via Fastcase.

Analytics At Your Fingertips



Learn what happened the last time a particular judge, opposing counsel or company faced cases similar to yours.

Advanced out-of-the-box PTAB and TTAB analytics are always at your fingertips.

API

Docket Alarm offers a powerful API (application programming interface) to developers that want to integrate case filings into their apps.

LAW FIRMS

Build custom dashboards for your attorneys and clients with live data direct from the court.

Automate many repetitive legal tasks like conflict checks, document management, and marketing.

FINANCIAL INSTITUTIONS

Litigation and bankruptcy checks for companies and debtors.

E-DISCOVERY AND LEGAL VENDORS

Sync your system to PACER to automate legal marketing.