



US006683886B1

(12) **United States Patent**
van der Tuijn et al.

(10) **Patent No.:** US 6,683,886 B1
(45) **Date of Patent:** Jan. 27, 2004

(54) **BLUETOOTH COMMUNICATION UNITS, WIRELESS COMMUNICATION SYSTEMS, WIRELESS COMMUNICATION DEVICES, BLUETOOTH COMMUNICATIONS METHODS, AND WIRELESS COMMUNICATION METHODS**

6,275,500 B1 * 8/2001 Callaway, Jr. et al. 370/449
6,366,622 B1 * 4/2002 Brown et al. 375/322
6,393,012 B1 * 5/2002 Pankaj 370/342
6,477,378 B1 * 11/2002 Halminen 455/450

FOREIGN PATENT DOCUMENTS

EP 0690650 1/1996
WO 9929126 1/1994
WO 9619887 6/1996
WO 9941876 8/1999

OTHER PUBLICATIONS

Johansson, P.; et al., Communications, Jun. 1999., ICC '99 IEEE International Conference on, vol. 3, pp. 1414-1420.*

* cited by examiner

Primary Examiner—Chi Pham
Assistant Examiner—Prenell Jones
(74) *Attorney, Agent, or Firm*—Peter Zawilski

(75) **Inventors:** Roland van der Tuijn, Mougins (FR); Michel Eftimakis, Juan les Pins (FR); Denis Audoly, St. Laurent du Var (FR)

(73) **Assignee:** Koninklijke Philips Electronics N.V., Eindhoven (NL)

(*) **Notice:** Subject to any disclaimer, the term of this patent is extended or adjusted under 35 U.S.C. 154(b) by 0 days.

(21) **Appl. No.:** 09/421,624

(22) **Filed:** Oct. 19, 1999

(51) **Int. Cl.⁷** H04L 12/43

(52) **U.S. Cl.** 370/458

(58) **Field of Search** 370/449, 342-346, 370/329, 310-315, 367, 389-395, 458-466, 354, 493, 229, 412; 375/322, 133, 222, 304; 455/519, 450-454, 62; 343/853, 824, 893; 379/102.03, 102.01, 93.17, 93.01, 93.28; 341/137; 345/89

(56) **References Cited**

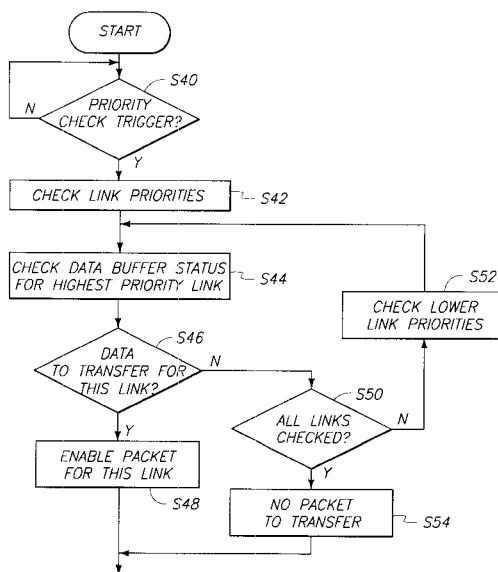
U.S. PATENT DOCUMENTS

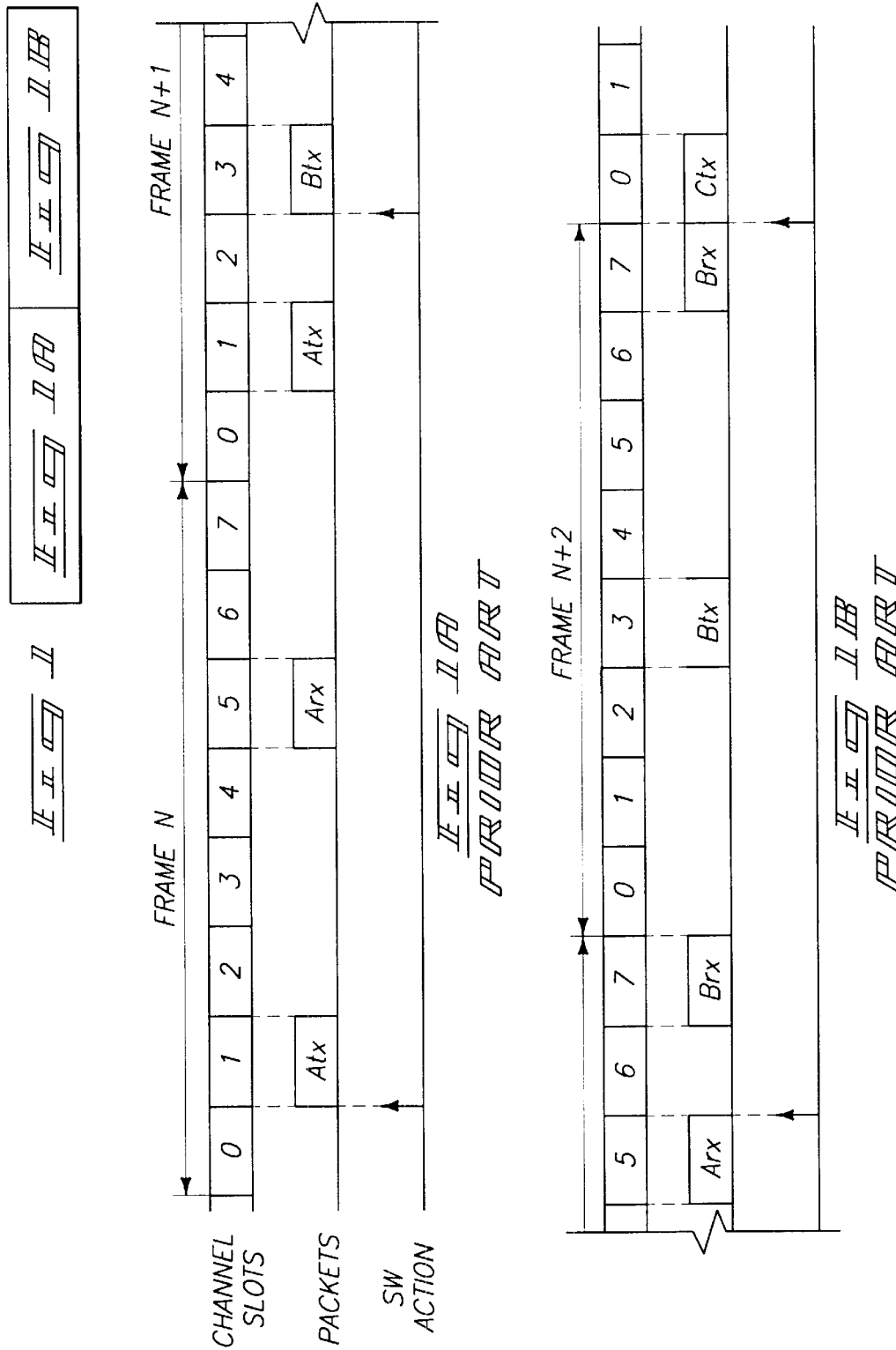
5,280,630 A 1/1994 Wang
5,471,671 A 11/1995 Wang et al.
5,530,912 A 6/1996 Agrawal et al.
5,608,727 A 3/1997 Perreault et al.
5,694,392 A 12/1997 Gaglione et al.
6,097,703 A 8/2000 Larsen et al.

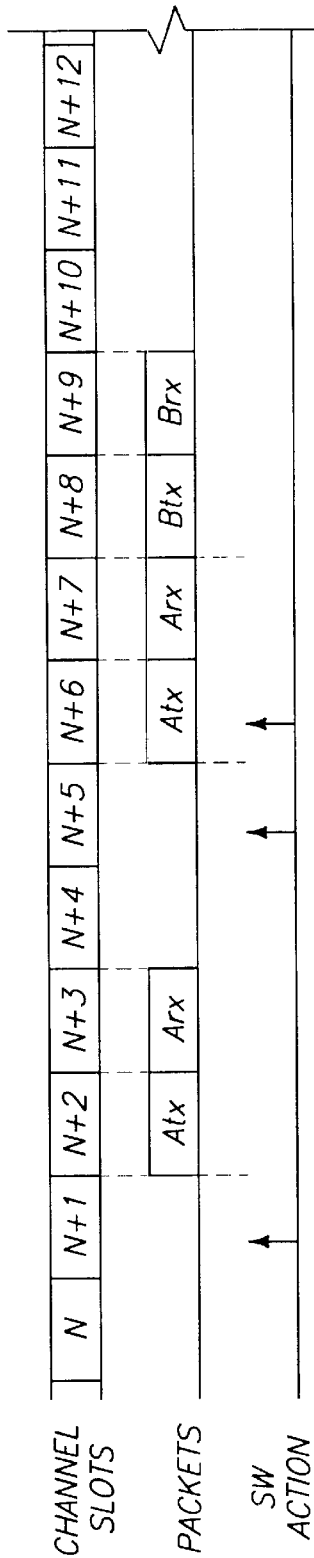
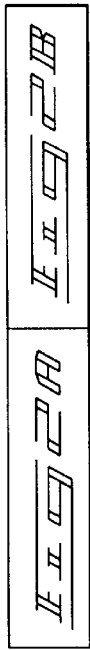
(57) **ABSTRACT**

Bluetooth communication units, wireless communication systems, wireless communication devices, Bluetooth communication methods, and wireless communication methods are provided. One aspect of the invention provides a Bluetooth communication unit including communication circuitry configured to communicate wireless signals using a plurality of communication links of a piconet according to a Bluetooth communication protocol; and processing circuitry coupled with the communication circuitry and configured to at least one of provide data into packets to be communicated in slots using the communication links and retrieve data from packets communicated in slots using the communication links, the processing circuitry being further configured to analyze the communication links of the piconet and to prioritize an order of communication of the packets responsive to the analysis.

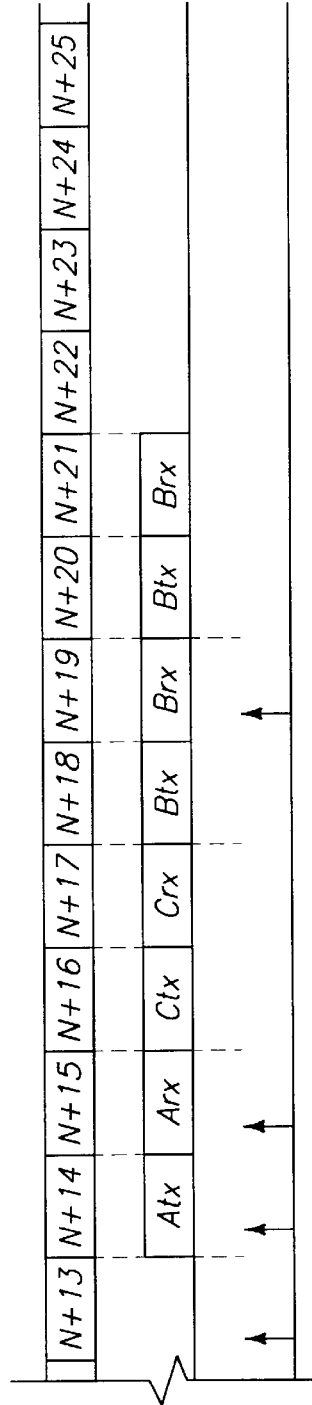
5 Claims, 8 Drawing Sheets



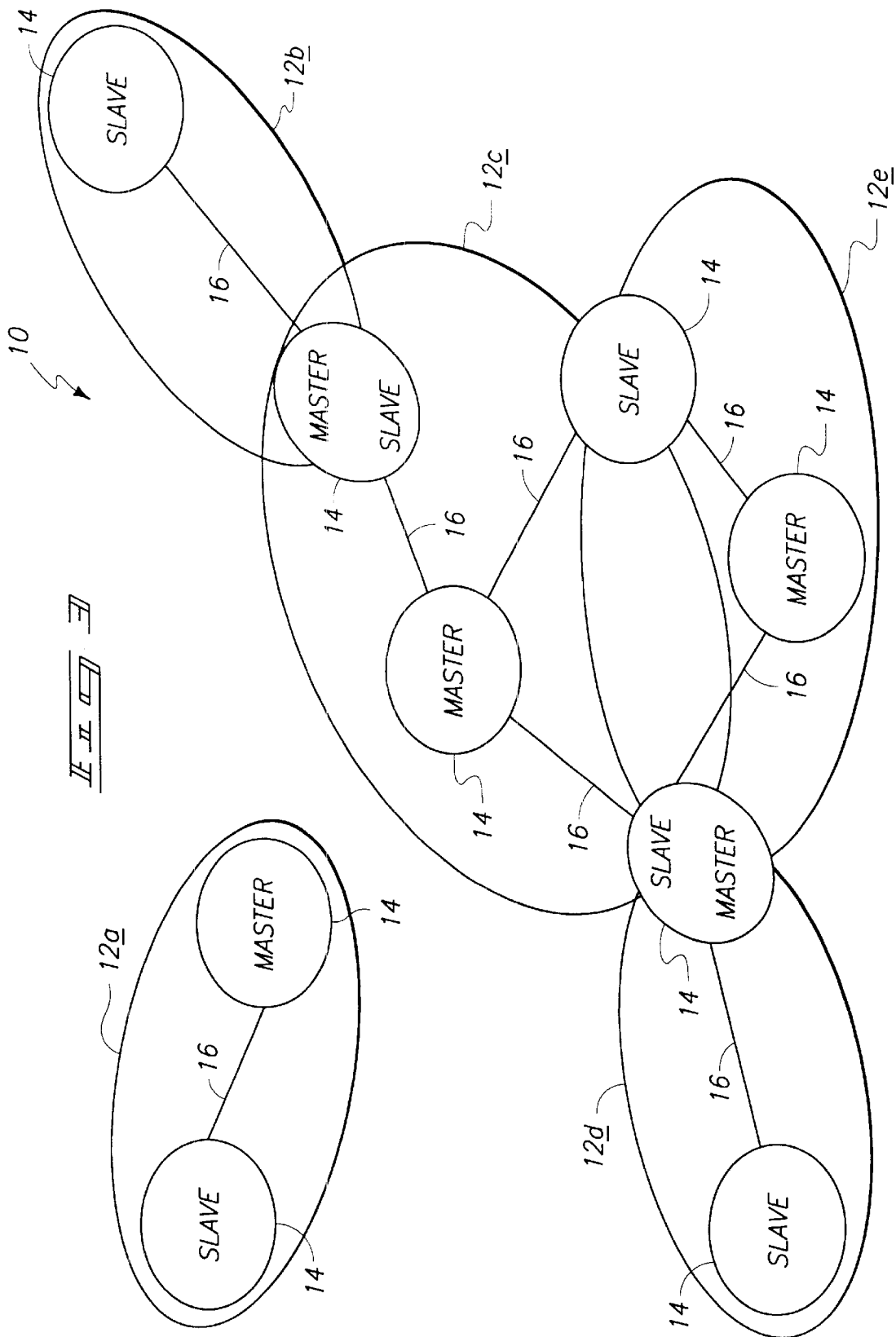


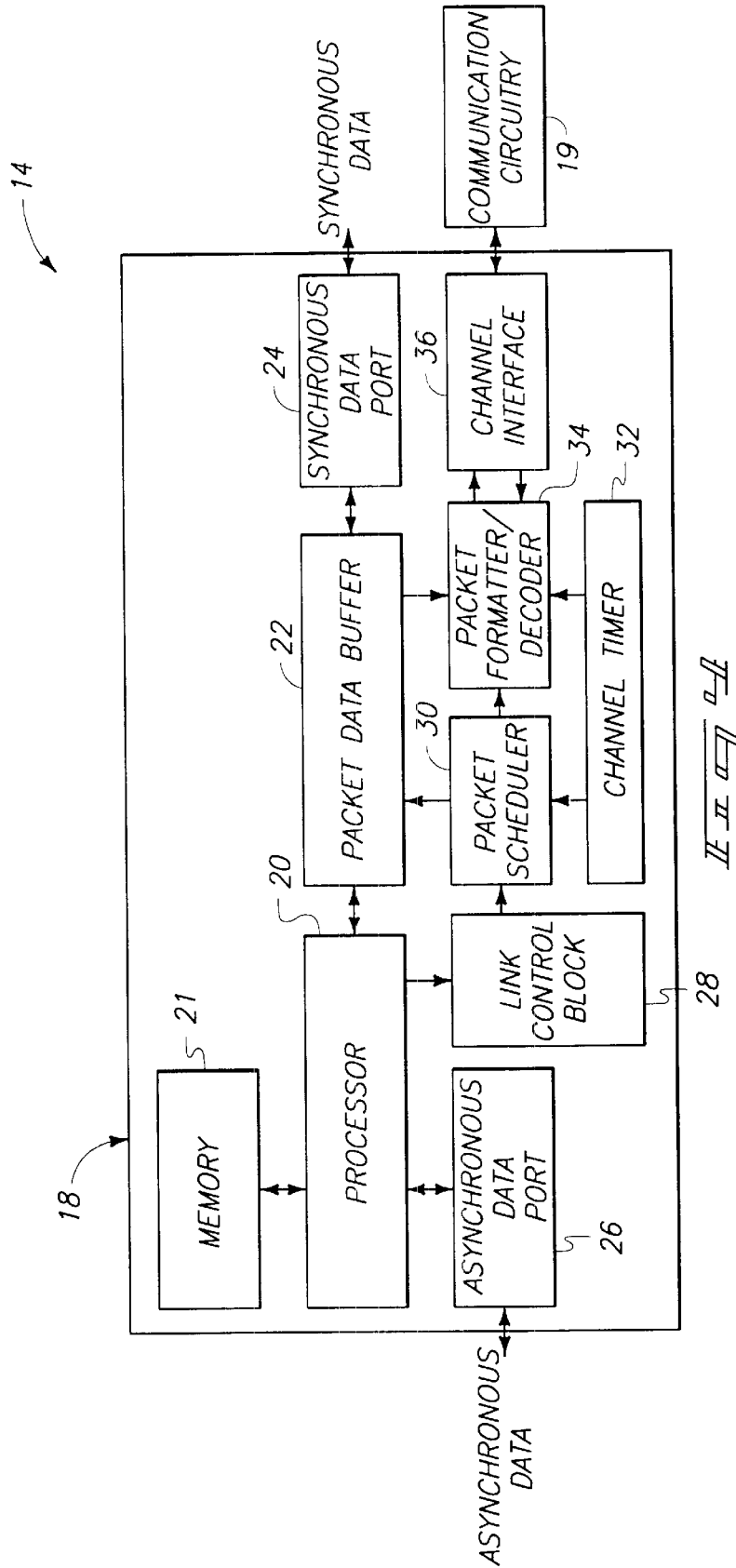


PRIOR ART



PRIOR ART





Explore Litigation Insights

Docket Alarm provides insights to develop a more informed litigation strategy and the peace of mind of knowing you're on top of things.

Real-Time Litigation Alerts



Keep your litigation team up-to-date with **real-time alerts** and advanced team management tools built for the enterprise, all while greatly reducing PACER spend.

Our comprehensive service means we can handle Federal, State, and Administrative courts across the country.

Advanced Docket Research



With over 230 million records, Docket Alarm's cloud-native docket research platform finds what other services can't. Coverage includes Federal, State, plus PTAB, TTAB, ITC and NLRB decisions, all in one place.

Identify arguments that have been successful in the past with full text, pinpoint searching. Link to case law cited within any court document via Fastcase.

Analytics At Your Fingertips



Learn what happened the last time a particular judge, opposing counsel or company faced cases similar to yours.

Advanced out-of-the-box PTAB and TTAB analytics are always at your fingertips.

API

Docket Alarm offers a powerful API (application programming interface) to developers that want to integrate case filings into their apps.

LAW FIRMS

Build custom dashboards for your attorneys and clients with live data direct from the court.

Automate many repetitive legal tasks like conflict checks, document management, and marketing.

FINANCIAL INSTITUTIONS

Litigation and bankruptcy checks for companies and debtors.

E-DISCOVERY AND LEGAL VENDORS

Sync your system to PACER to automate legal marketing.