



US007170519B2

(12) **United States Patent**
Patel et al.

(10) **Patent No.:** **US 7,170,519 B2**
(45) **Date of Patent:** **Jan. 30, 2007**

(54) **COMPUTER-IMPLEMENTED SYSTEM AND METHOD FOR GENERATING DATA GRAPHICAL DISPLAYS**

(75) Inventors: **Himesh G. Patel**, Apex, NC (US); **Frank Lee Wimmer**, Raleigh, NC (US); **Cleester Daniel Heath, IV**, Clayton, NC (US); **Paul W. Layne**, Cary, NC (US); **Kevin Dale Smith**, Raleigh, NC (US)

(73) Assignee: **SAS Institute Inc.**, Cary, NC (US)

(*) Notice: Subject to any disclaimer, the term of this patent is extended or adjusted under 35 U.S.C. 154(b) by 86 days.

(21) Appl. No.: **10/122,584**

(22) Filed: **Apr. 15, 2002**

(65) **Prior Publication Data**

US 2003/0193502 A1 Oct. 16, 2003

Related U.S. Application Data

(60) Provisional application No. 60/368,896, filed on Mar. 29, 2002.

(51) **Int. Cl.**
G06T 11/20 (2006.01)

(52) **U.S. Cl.** **345/440; 345/440.2**

(58) **Field of Classification Search** **345/440, 345/643, 418, 619, 440.2, 581; 707/102**

See application file for complete search history.

(56) **References Cited**

U.S. PATENT DOCUMENTS

6,301,579	B1 *	10/2001	Becker	707/102
6,614,433	B1 *	9/2003	Watts	345/440
6,812,926	B1 *	11/2004	Rugge	345/440
6,900,807	B1 *	5/2005	Liongosari et al.	345/440
2002/0140699	A1 *	10/2002	Miyadai	345/440
2002/0149604	A1 *	10/2002	Wilkinson	345/643
2003/0030637	A1 *	2/2003	Grinstein et al.	345/420
2003/0071814	A1 *	4/2003	Jou et al.	345/440

OTHER PUBLICATIONS

Bissell et al., "Modelling applications of spreadsheets", Jul./Aug. 1989, IEE review, pp. 267-271.

* cited by examiner

Primary Examiner—Kee M. Tung

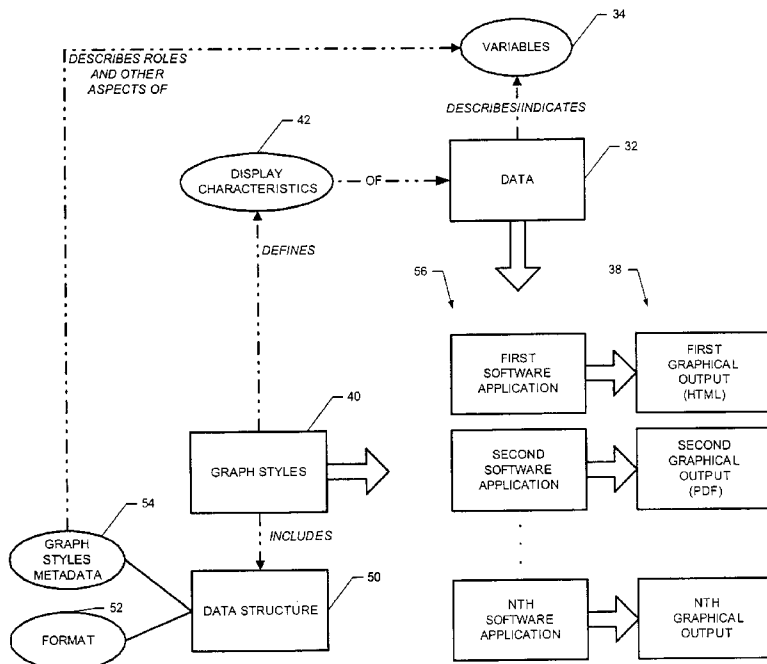
Assistant Examiner—Chante Harrison

(74) *Attorney, Agent, or Firm*—Jones Day

(57) **ABSTRACT**

A computer-implemented system and method for generating data graphical displays. The data is indicative of a plurality of variables. The system and method receive data that is to be displayed in a non-textual format. Graph style data items are retrieved that contain display characteristics for displaying the data in the non-textual format. The data is displayed in accordance with the graph style data items.

59 Claims, 23 Drawing Sheets



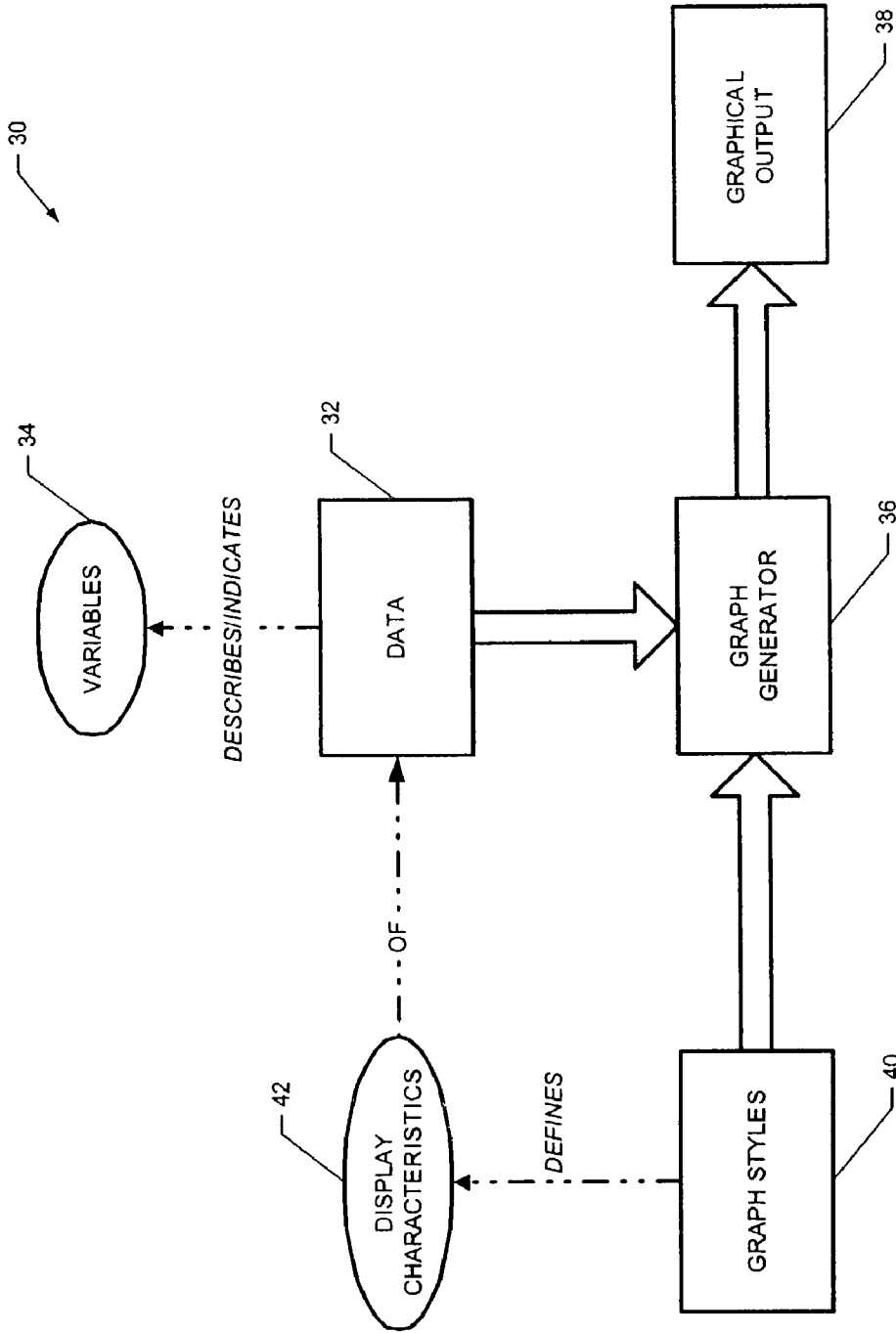
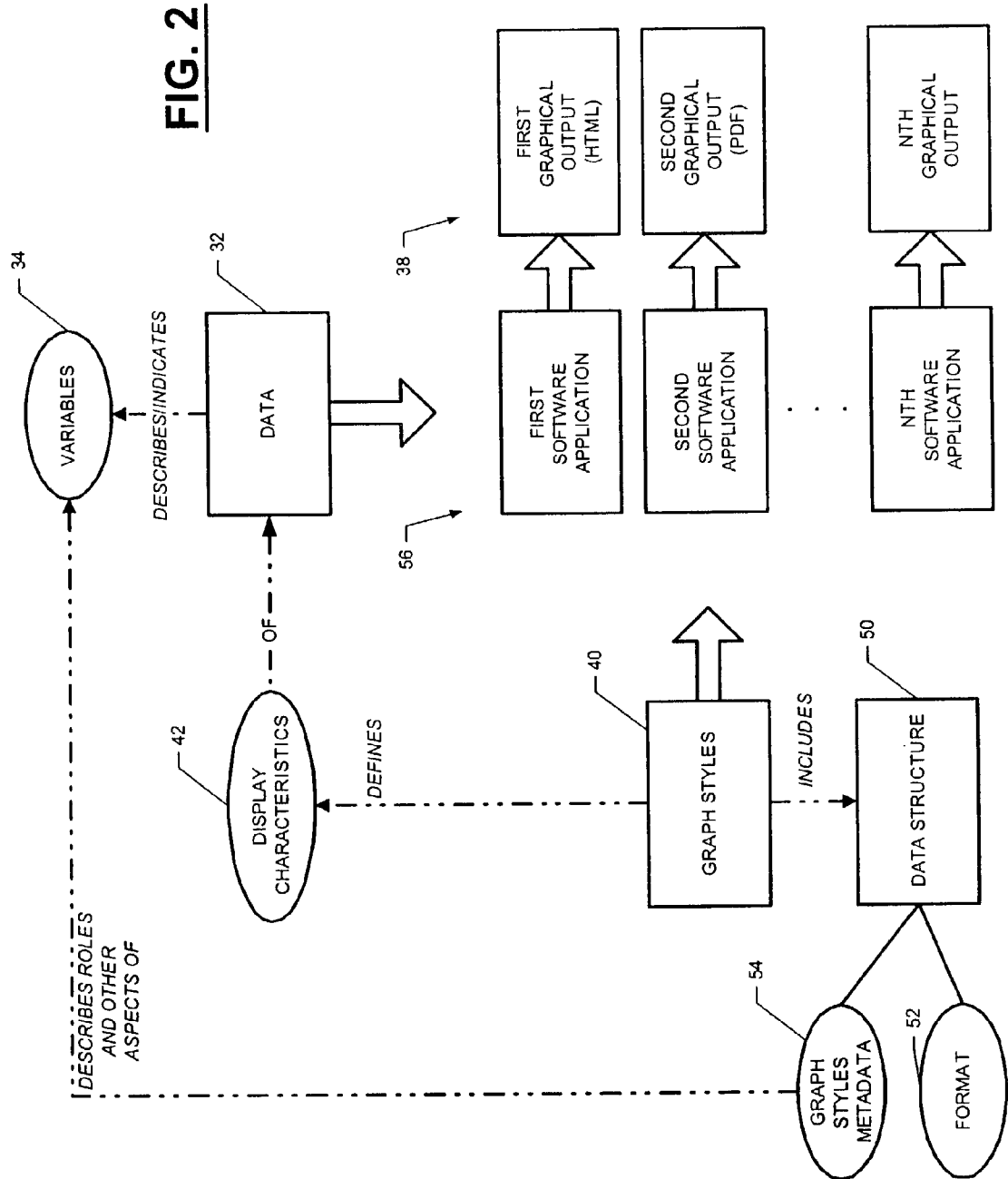


FIG. 1



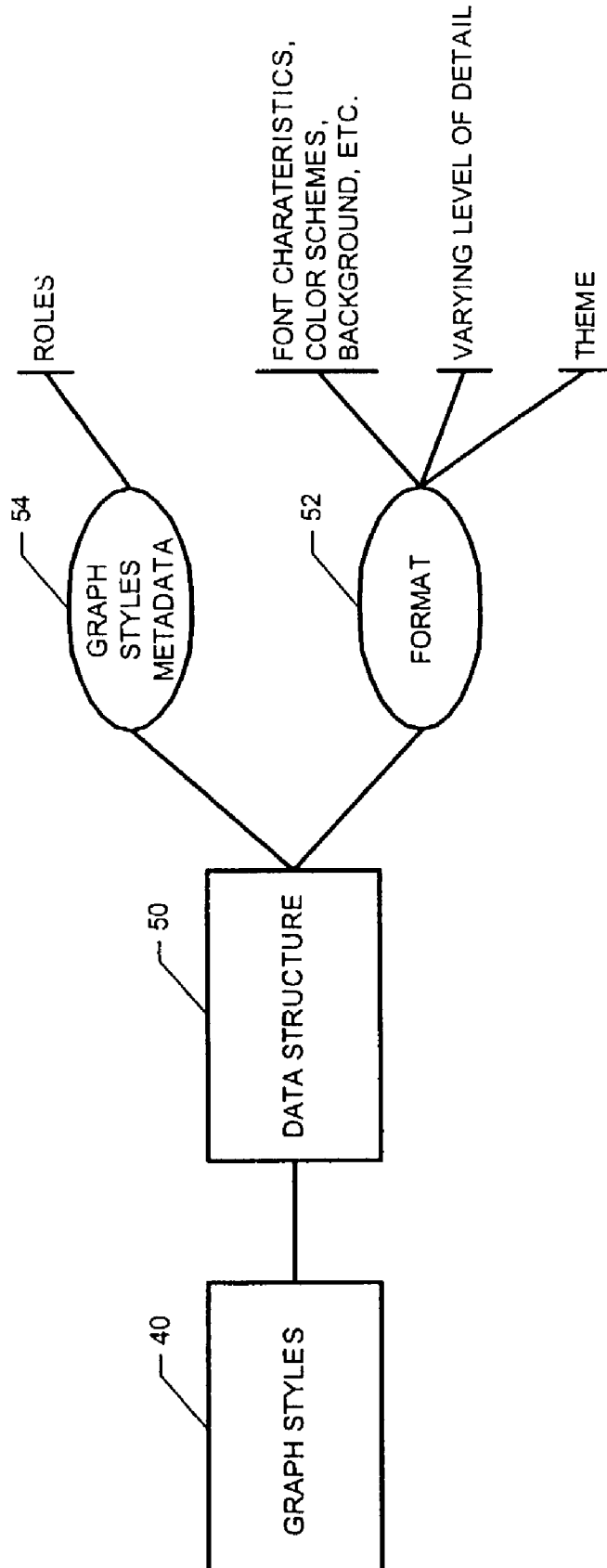


FIG. 3

102 — `<Report version="1.0" xmlns:style="`
 104 — `http://www.sas.com/reportmodel/styles">`
 110 — `<Data>`
 `<IQData type="2DEmbedded" name="Data0">`
 `<EmbeddedData>`
 `<Variables>`
 `<Variable name="Year4" varName="Year" label="Year" type`
 `= "String"/>`
 `<Variable name="Year31" varName="Year3" label="Year" type`
 `= "String"/>`
 `<Variable sasFormat="DOLLAR10.0" encoding="Text" name="Sales9"`
 `varName="Sales" label="Sales" type="Numeric"/>`
 `<Variable encoding="Text" name="__FREQ__14" varName="__FREQ__"`
 `label="Frequency" type="Numeric"/>`
 110 — `</Variables>`
 112 — `<ValuesList>`
 `<Values>`
 114 — `<Value> 1997</Value>`
 116 — `<Value> 1997</Value>`
 118 — `<Value> 10000</Value>`
 120 — `<Value> 1</Value>`
 `</Values>`
 150 — `<Values>`
 `<Value> 1998</Value>`
 `<Value> 1998</Value>`
 `<Value> 12000</Value>`
 `<Value> 1</Value>`
 `</Values>`
 150 — `<Values>`
 `<Value> 1999</Value>`
 `<Value> 1999</Value>`
 `<Value> 15000</Value>`
 `<Value> 1</Value>`
 `</Values>`
 `<Values>`
 `<Value> 2000</Value>`
 `<Value> 2000</Value>`
 `<Value> 16000</Value>`
 `<Value> 1</Value>`
 `</Values>`

FIG. 4A

Explore Litigation Insights

Docket Alarm provides insights to develop a more informed litigation strategy and the peace of mind of knowing you're on top of things.

Real-Time Litigation Alerts



Keep your litigation team up-to-date with **real-time alerts** and advanced team management tools built for the enterprise, all while greatly reducing PACER spend.

Our comprehensive service means we can handle Federal, State, and Administrative courts across the country.

Advanced Docket Research



With over 230 million records, Docket Alarm's cloud-native docket research platform finds what other services can't. Coverage includes Federal, State, plus PTAB, TTAB, ITC and NLRB decisions, all in one place.

Identify arguments that have been successful in the past with full text, pinpoint searching. Link to case law cited within any court document via Fastcase.

Analytics At Your Fingertips



Learn what happened the last time a particular judge, opposing counsel or company faced cases similar to yours.

Advanced out-of-the-box PTAB and TTAB analytics are always at your fingertips.

API

Docket Alarm offers a powerful API (application programming interface) to developers that want to integrate case filings into their apps.

LAW FIRMS

Build custom dashboards for your attorneys and clients with live data direct from the court.

Automate many repetitive legal tasks like conflict checks, document management, and marketing.

FINANCIAL INSTITUTIONS

Litigation and bankruptcy checks for companies and debtors.

E-DISCOVERY AND LEGAL VENDORS

Sync your system to PACER to automate legal marketing.