



US005841991A

United States Patent [19]
Russell

[11] Patent Number: 5,841,991
[45] Date of Patent: Nov. 24, 1998

[54] IN AN INTERACTIVE NETWORK BOARD, A METHOD AND APPARATUS FOR STORING A MEDIA ACCESS CONTROL ADDRESS IN A REMOTELY ALTERABLE MEMORY

[75] Inventor: William C. Russell, Laguna Hills, Calif.

[73] Assignee: Canon Information Systems, Inc., Irvine, Calif.

[21] Appl. No.: 978,435

[22] Filed: Nov. 18, 1992

[51] Int. Cl.⁶ G06F 13/16; G06F 15/177

[52] U.S. Cl. 395/200.51; 395/200.46; 395/834; 395/183.14

[58] Field of Search 395/200, 800, 395/200.1, 200.07, 200.08, 430, 834, 183.14, 200.42, 200.46, 200.5, 200.51, 653; 370/85.14, 85.08; 340/825.05, 825.3, 825.5; 364/276.3, 281.9, 280.3, 962.1; 711/103

[56] References Cited

U.S. PATENT DOCUMENTS

| | | | |
|-----------|---------|-----------------------|------------|
| 4,742,483 | 5/1988 | Morrell | 364/900 |
| 4,769,767 | 9/1988 | Hilbrink | 364/DIG. 1 |
| 4,797,881 | 1/1989 | Ben-Artzi | 370/88 |
| 4,837,764 | 6/1989 | Russello | 371/20 |
| 4,866,664 | 9/1989 | Burkhardt, Jr. et al. | 364/900 |
| 4,939,636 | 7/1990 | Nakagawa et al. | 395/200 |
| 4,974,199 | 11/1990 | Verbanets, Jr. et al. | 364/900 |
| 5,007,013 | 4/1991 | Elms | 364/900 |
| 5,018,079 | 5/1991 | Shukunami et al. | 364/519 |
| 5,046,082 | 9/1991 | Zicker et al. | 379/59 |
| 5,060,228 | 10/1991 | Tsutsui et al. | 370/85.13 |
| 5,075,875 | 12/1991 | Love et al. | 395/117 |
| 5,155,837 | 10/1992 | Liu et al. | 395/500 |
| 5,155,847 | 10/1992 | Kirouac et al. | 395/200.09 |
| 5,163,131 | 11/1992 | Row et al. | 395/200 |
| 5,165,018 | 11/1992 | Simor | 395/200.1 |
| 5,195,130 | 3/1993 | Weiss et al. | 379/98 |
| 5,210,854 | 5/1993 | Beaverton et al. | 395/430 |
| 5,214,646 | 5/1993 | Yacolny | 370/85.14 |
| 5,239,662 | 8/1993 | Damelson et al. | 395/800 |

| | | | |
|-----------|---------|-------------------|------------|
| 5,261,055 | 11/1993 | Moran et al. | 395/834 |
| 5,263,003 | 11/1993 | Cowles et al. | 365/230.03 |
| 5,268,928 | 12/1993 | Herh et al. | 375/8 |
| 5,276,839 | 1/1994 | Robb et al. | 395/430 |
| 5,299,313 | 3/1994 | Petersen et al. | 395/200 |
| 5,309,363 | 5/1994 | Graves et al. | 364/464.02 |
| 5,317,693 | 5/1994 | Cuenod et al. | |
| 5,359,730 | 10/1994 | Marron | 364/DIG. 1 |
| 5,371,692 | 12/1994 | Draeger et al. | 340/825.5 |
| 5,410,703 | 4/1995 | Nilsson | 395/183.14 |
| 5,420,572 | 5/1995 | Dolin, Jr. et al. | 340/825.5 |
| 5,421,009 | 5/1995 | Platt | 395/200.1 |
| 5,428,748 | 6/1995 | Davidson et al. | 364/DIG. 1 |
| 5,434,999 | 7/1995 | Goire et al. | 395/200.09 |
| 5,438,528 | 8/1995 | Emerson et al. | |
| 5,444,861 | 8/1995 | Adamec et al. | |
| 5,495,610 | 2/1996 | Shing et al. | 395/200.08 |

FOREIGN PATENT DOCUMENTS

8904578 5/1989 WIPO .

OTHER PUBLICATIONS

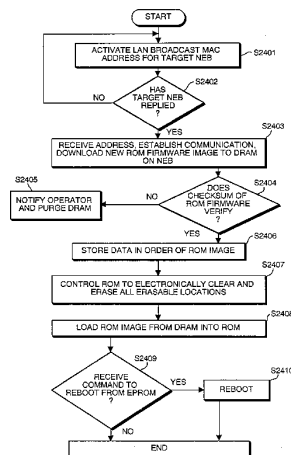
"Penny-Pinching Networks for Distributed Control", Paula Skokowski, Control Engineering, vol. 39, No. 5, Mar. 1992, pp. 35-37.

Primary Examiner—Mark H. Rinehart
Attorney, Agent, or Firm—Fitzpatrick, Cella, Harper & Scinto

[57] ABSTRACT

Method and apparatus for storing a Media Access Control (MAC) address in an EPROM disposed on a target interactive network board having a local area network interface comprises the step of activating a LAN communication program. The communication program operates to broadcast an inquiry through the LAN for the target interactive network board, to receive location information of the target interactive network board in response to the broadcast inquiry, and to establish communication with the target interactive network board. The MAC address is downloaded to a RAM on the board, verified therein, and loaded into the EPROM from the RAM.

26 Claims, 31 Drawing Sheets



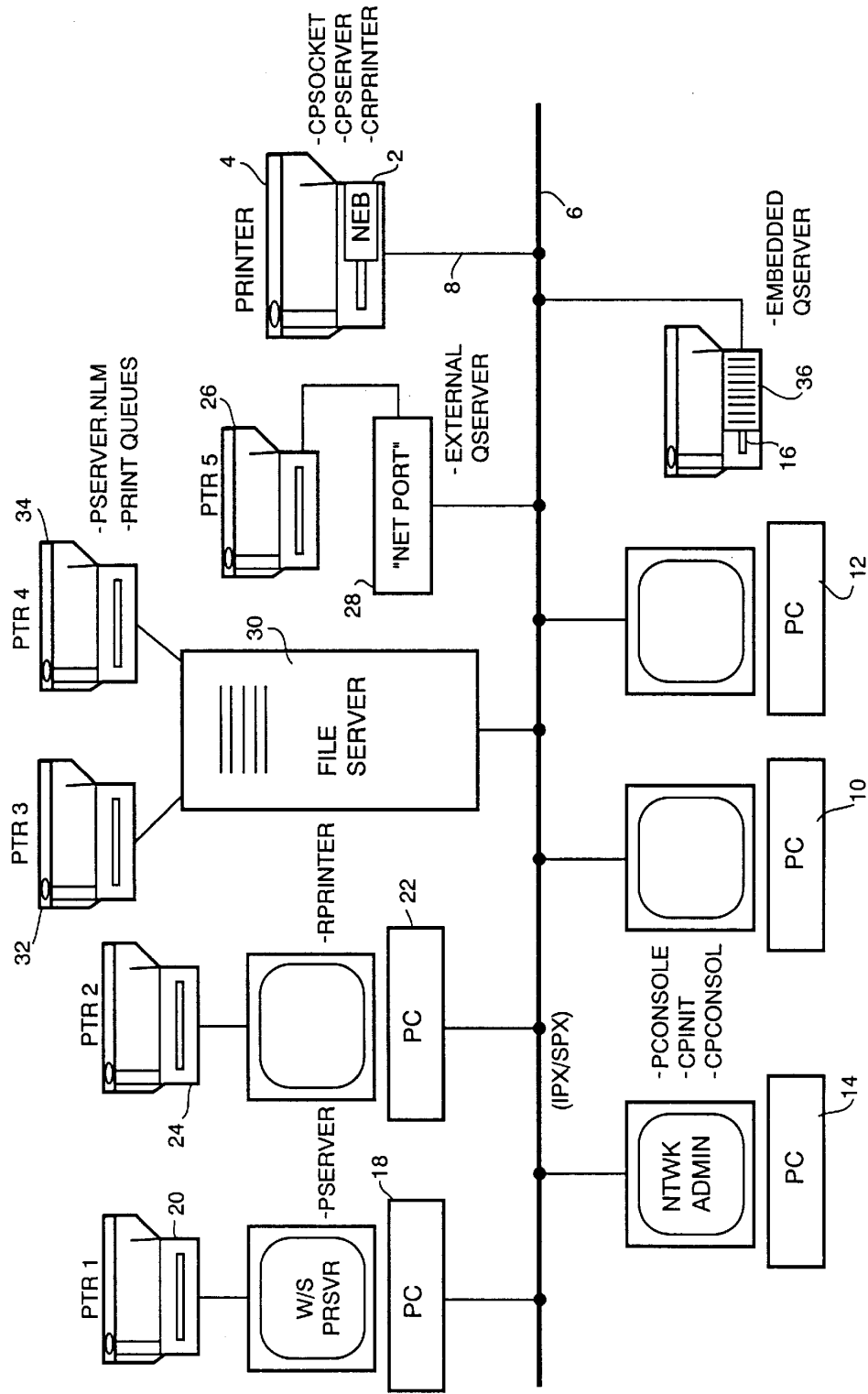


FIG. 1

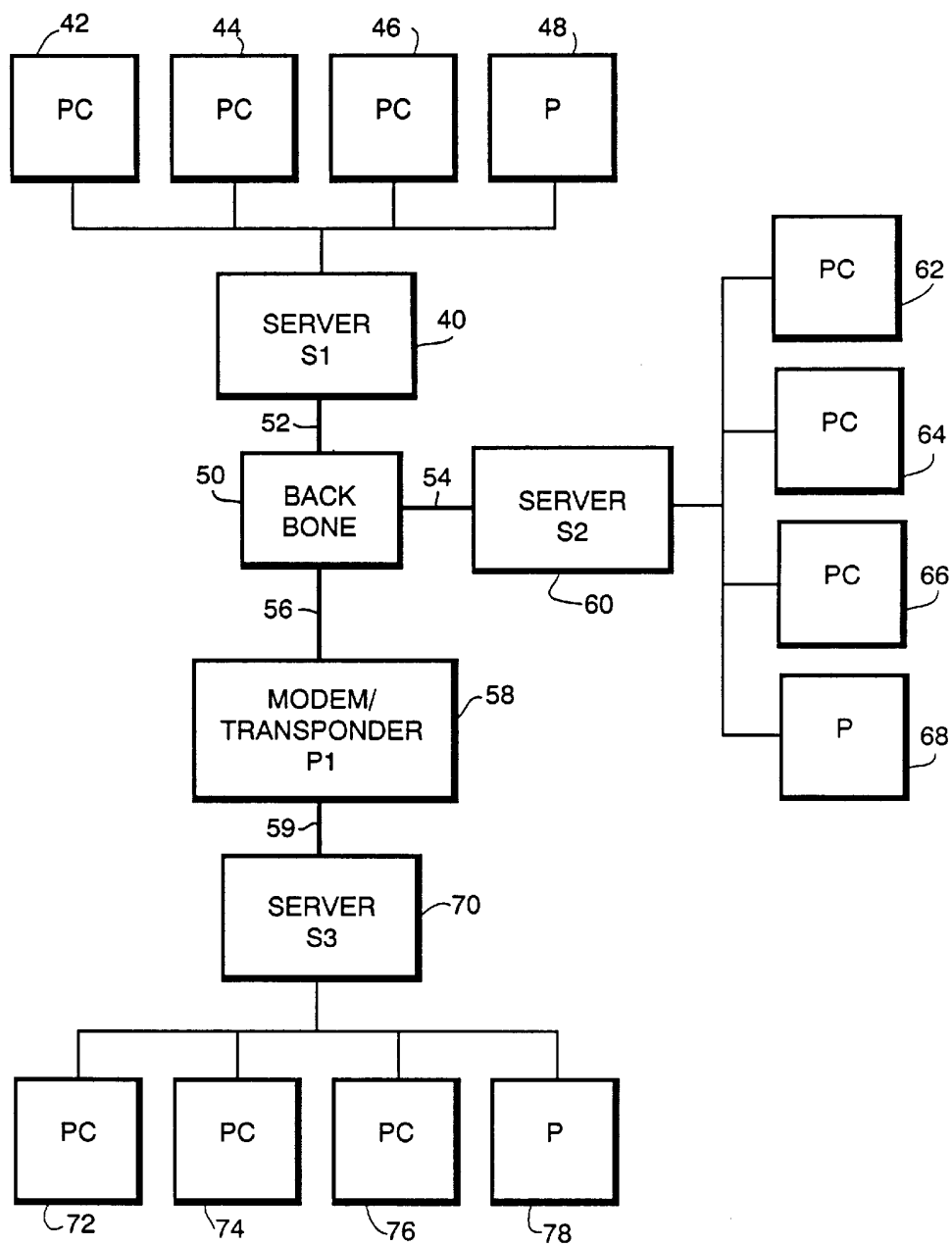
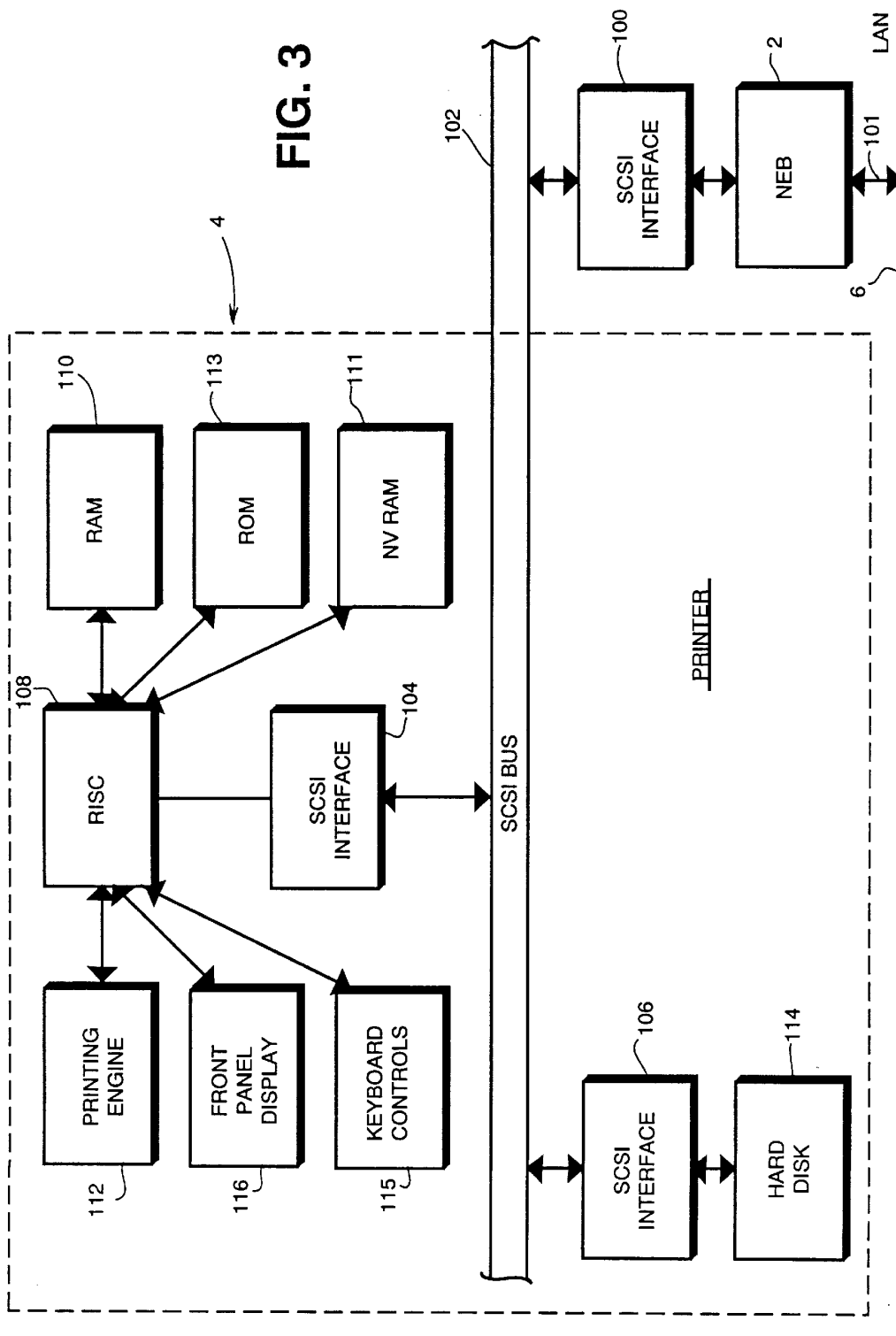


FIG. 2



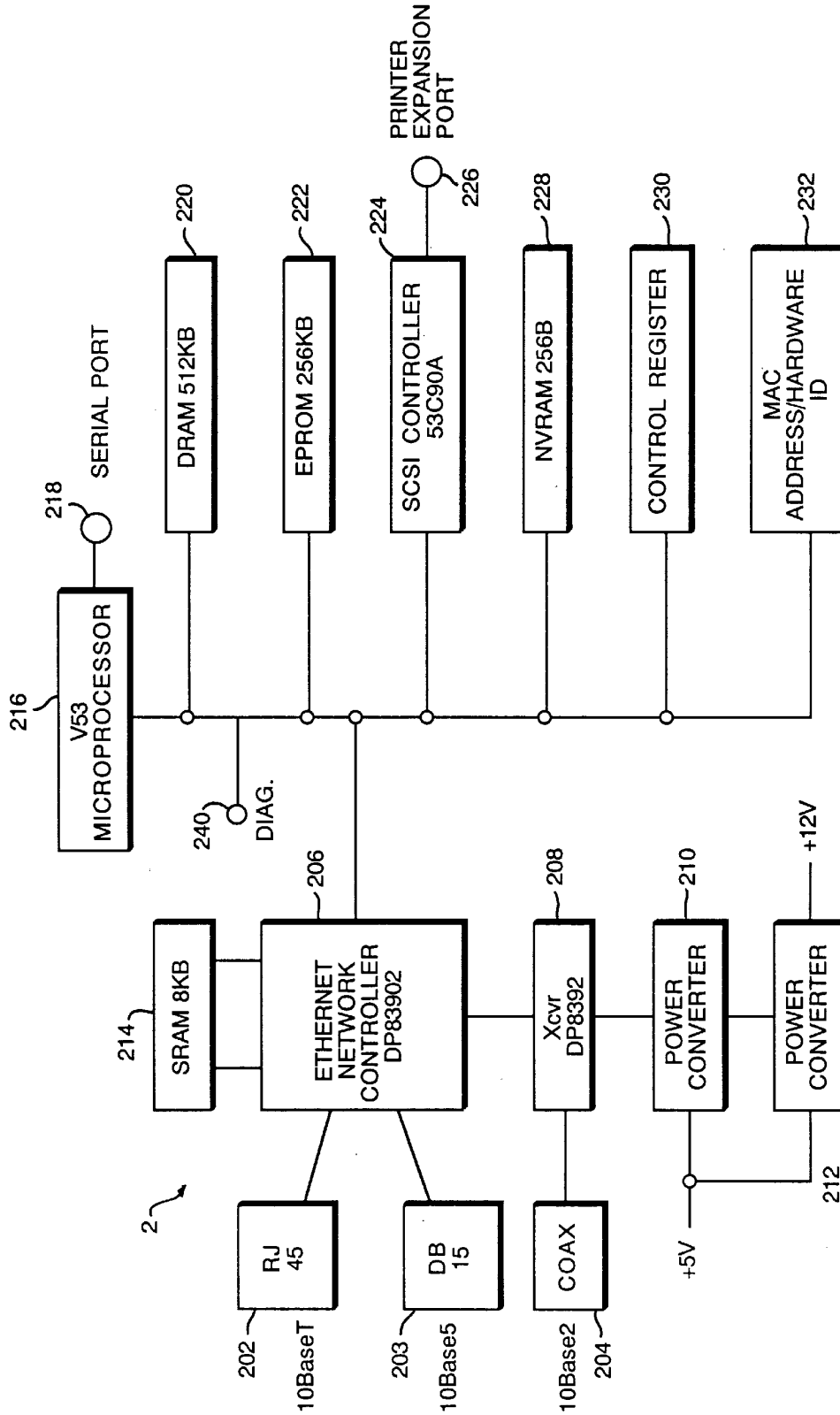


FIG. 4

Explore Litigation Insights

Docket Alarm provides insights to develop a more informed litigation strategy and the peace of mind of knowing you're on top of things.

Real-Time Litigation Alerts



Keep your litigation team up-to-date with **real-time alerts** and advanced team management tools built for the enterprise, all while greatly reducing PACER spend.

Our comprehensive service means we can handle Federal, State, and Administrative courts across the country.

Advanced Docket Research



With over 230 million records, Docket Alarm's cloud-native docket research platform finds what other services can't. Coverage includes Federal, State, plus PTAB, TTAB, ITC and NLRB decisions, all in one place.

Identify arguments that have been successful in the past with full text, pinpoint searching. Link to case law cited within any court document via Fastcase.

Analytics At Your Fingertips



Learn what happened the last time a particular judge, opposing counsel or company faced cases similar to yours.

Advanced out-of-the-box PTAB and TTAB analytics are always at your fingertips.

API

Docket Alarm offers a powerful API (application programming interface) to developers that want to integrate case filings into their apps.

LAW FIRMS

Build custom dashboards for your attorneys and clients with live data direct from the court.

Automate many repetitive legal tasks like conflict checks, document management, and marketing.

FINANCIAL INSTITUTIONS

Litigation and bankruptcy checks for companies and debtors.

E-DISCOVERY AND LEGAL VENDORS

Sync your system to PACER to automate legal marketing.