



(12) **United States Patent**
Dietz et al.

(10) **Patent No.:** **US 6,839,751 B1**
(45) **Date of Patent:** **Jan. 4, 2005**

(54) **RE-USING INFORMATION FROM DATA TRANSACTIONS FOR MAINTAINING STATISTICS IN NETWORK MONITORING**

(75) Inventors: **Russell S. Dietz**, San Jose, CA (US);
Joseph R. Maixner, Aptos, CA (US);
Andrew A. Koppenhaver, Littleton, CO (US)

(73) Assignee: **Hi/fn, Inc.**, Los Gatos, CA (US)

(*) Notice: Subject to any disclaimer, the term of this patent is extended or adjusted under 35 U.S.C. 154(b) by 728 days.

(21) Appl. No.: **09/608,126**

(22) Filed: **Jun. 30, 2000**

Related U.S. Application Data

(60) Provisional application No. 60/141,903, filed on Jun. 30, 1999.

(51) **Int. Cl.**⁷ **G06F 15/173**

(52) **U.S. Cl.** **709/224; 709/223; 709/230**

(58) **Field of Search** **709/223, 224, 709/231, 232, 230; 370/252, 231; 379/32; 704/43; 714/39; 340/825**

(56) **References Cited**

U.S. PATENT DOCUMENTS

4,972,453	A	*	11/1990	Daniel et al.	379/9.03
5,535,338	A	*	7/1996	Krause et al.	709/222
5,703,877	A		12/1997	Nuber et al.	370/395
5,720,032	A	*	2/1998	Picazo, Jr. et al.	709/250
5,761,429	A	*	6/1998	Thompson	709/224
5,799,154	A	*	8/1998	Kuriyan	709/223
5,802,054	A	*	9/1998	Bellenger	370/401
5,850,388	A	*	12/1998	Anderson et al.	370/252
5,892,754	A		4/1999	Kompella et al.	370/236
6,097,699	A	*	8/2000	Chen et al.	370/231
6,115,393	A	*	9/2000	Engel et al.	370/469
6,269,330	B1	*	7/2001	Cidon et al.	704/43
6,279,113	B1	*	8/2001	Vaidya	713/201
6,282,570	B1	*	8/2001	Leung et al.	709/224

6,330,226	B1	*	12/2001	Chapman et al.	370/232
6,363,056	B1	*	3/2002	Beigi et al.	370/252
6,381,306	B1	*	4/2002	Lawson et al.	379/32
6,424,624	B1	*	7/2002	Galand et al.	370/231
6,453,345	B2	*	9/2002	Trcka et al.	709/224
6,625,657	B1	*	9/2003	Bullard	709/237
6,651,099	B1	*	11/2003	Dietz et al.	709/224

OTHER PUBLICATIONS

NOV94: Packet Filtering in the SNMP Remote Monitor ;
www.skrymir.com/dobbs/articles/1994/9411/9411h/
9411h.htm.*

GTrace—A Graphical Traceroute Tool authored by Ram
Periakaruppan, Evi Nemeth ; http://www.caida.org/out-
reach/papers/1999/GTrace/index.xml.*

Advanced Methods for Storage and Retrieval in Image ;
http://www.cs.tulane.edu/www/Prototype/proposal.html;
1998.*

Measurement and analysis of the digital DECT propagation
channel; IEEE 1998.*

* cited by examiner

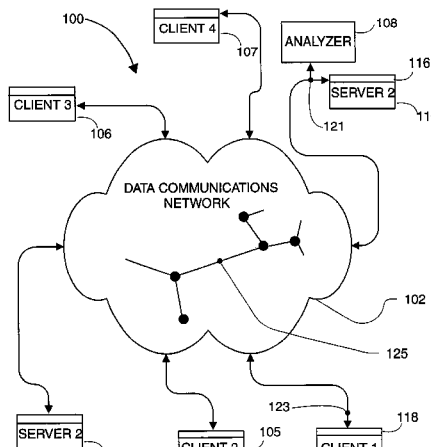
Primary Examiner—Thong Vu

(74) *Attorney, Agent, or Firm*—Dov Rosenfeld; Inventek

(57) **ABSTRACT**

A method of and monitor apparatus for analyzing a flow of packets passing through a connection point on a computer network. The method includes receiving a packet from a packet acquisition device, and looking up a flow-entry database containing flow-entries for previously encountered conversational flows. The looking up to determine if the received packet is of an existing flow. Each and every packet is processed. If the packet is of an existing flow, the method updates the flow-entry of the existing flow, including storing one or more statistical measures kept in the flow-entry. If the packet is of a new flow, the method stores a new flow-entry for the new flow in the flow-entry database, including storing one or more statistical measures kept in the flow-entry. The statistical measures are used to determine metrics related to the flow. The metrics may be base metrics from which quality of service metrics are determined, or may be the quality of service metrics.

21 Claims, 18 Drawing Sheets



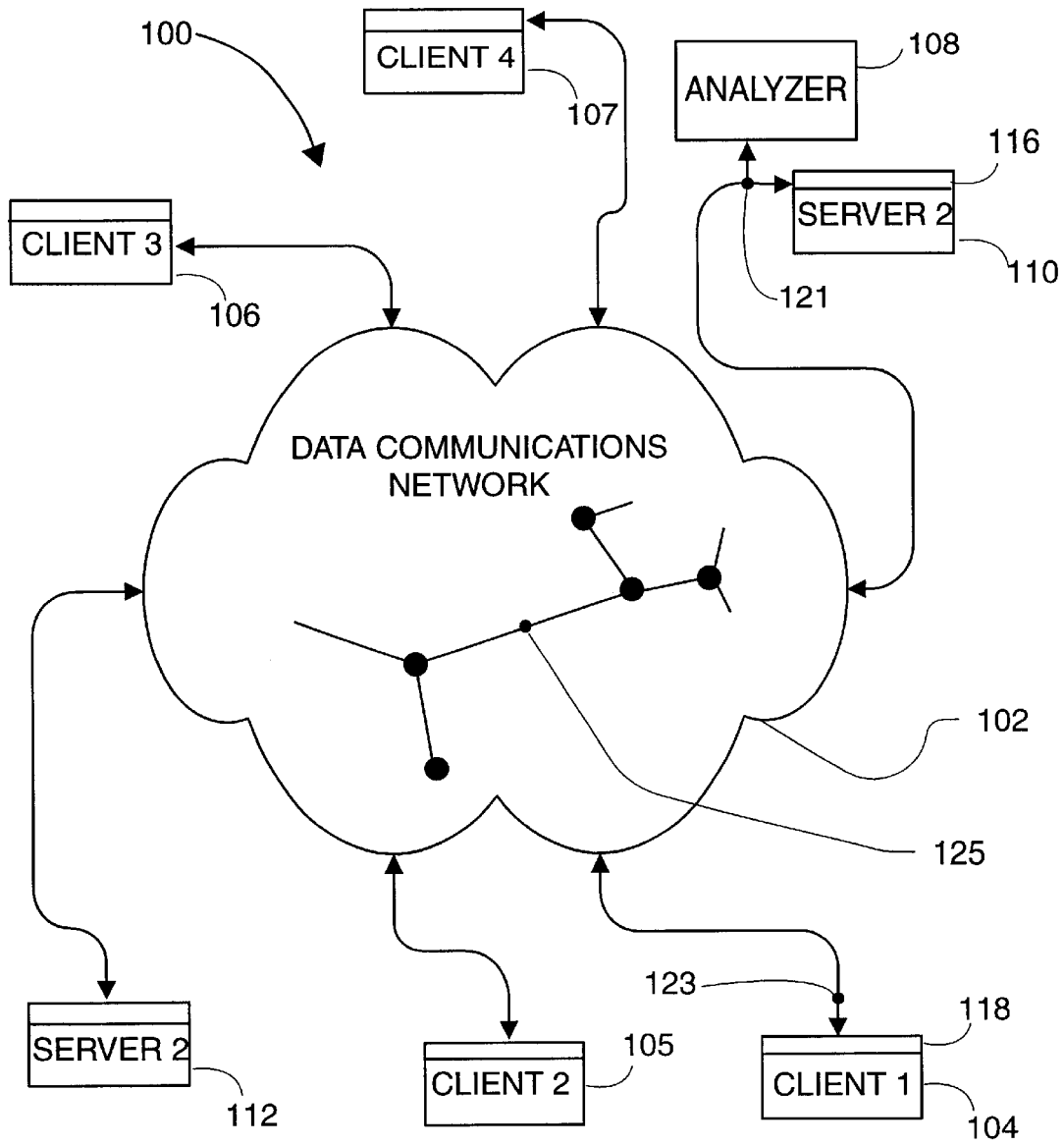


FIG. 1

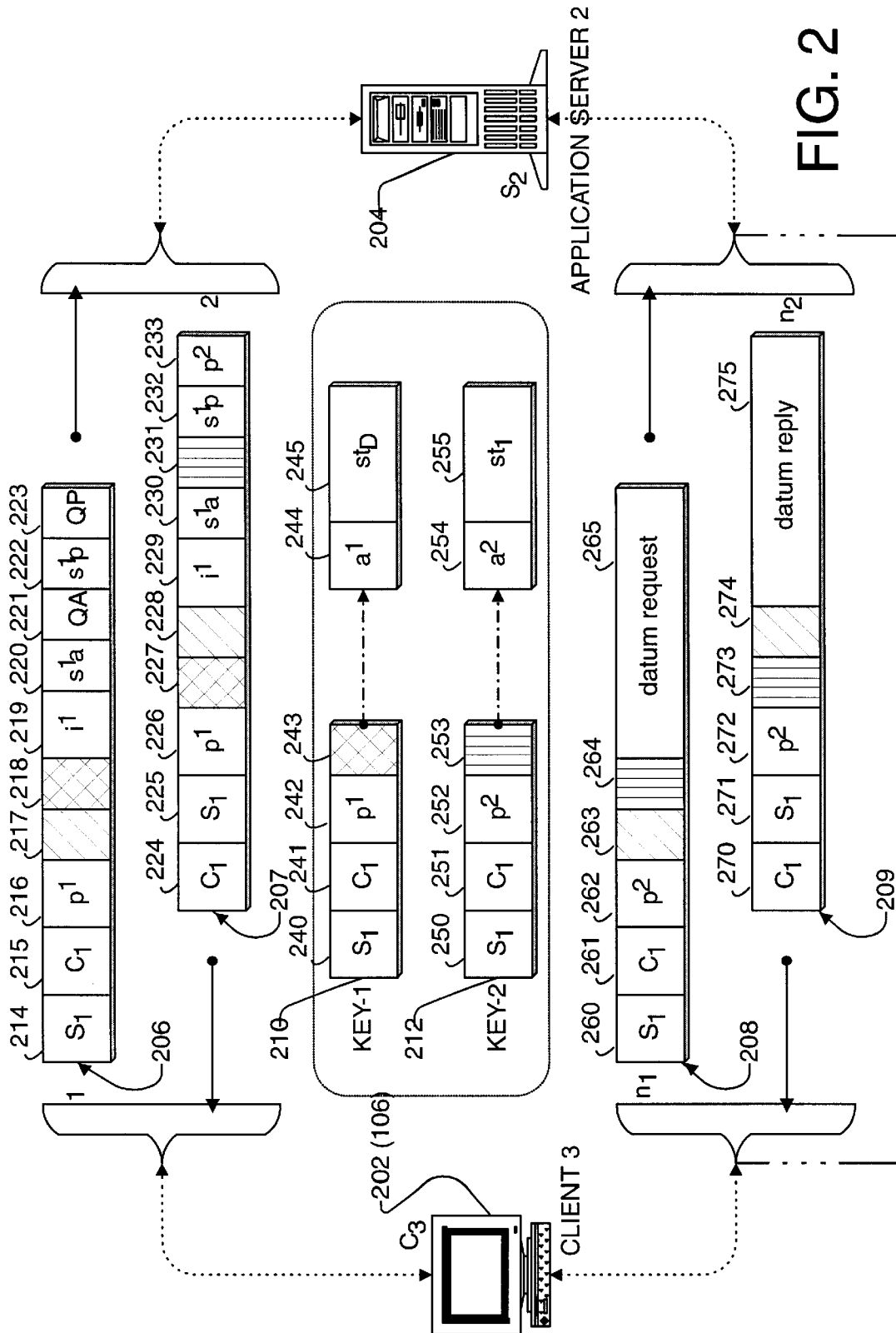


FIG. 2

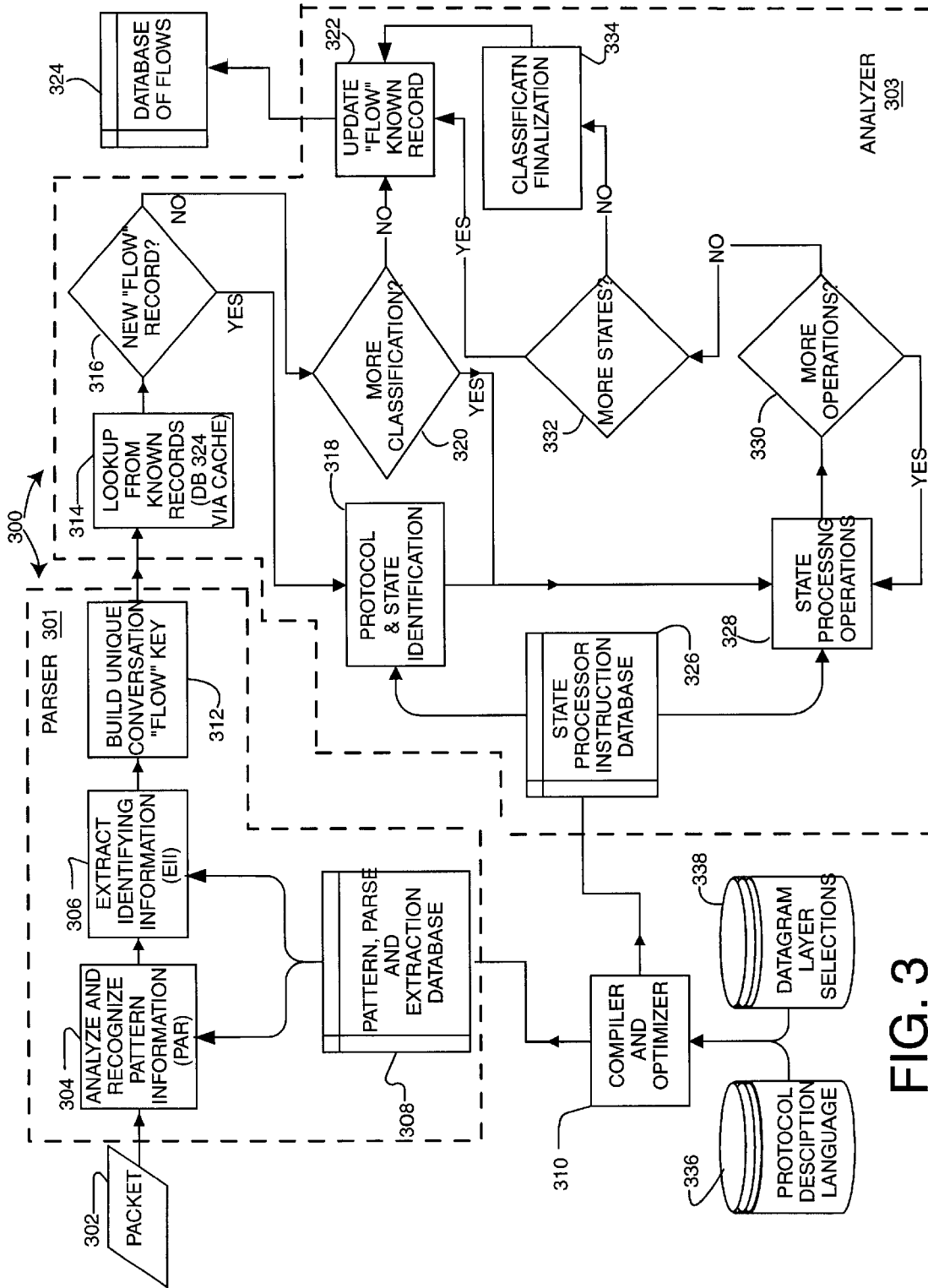


FIG. 3

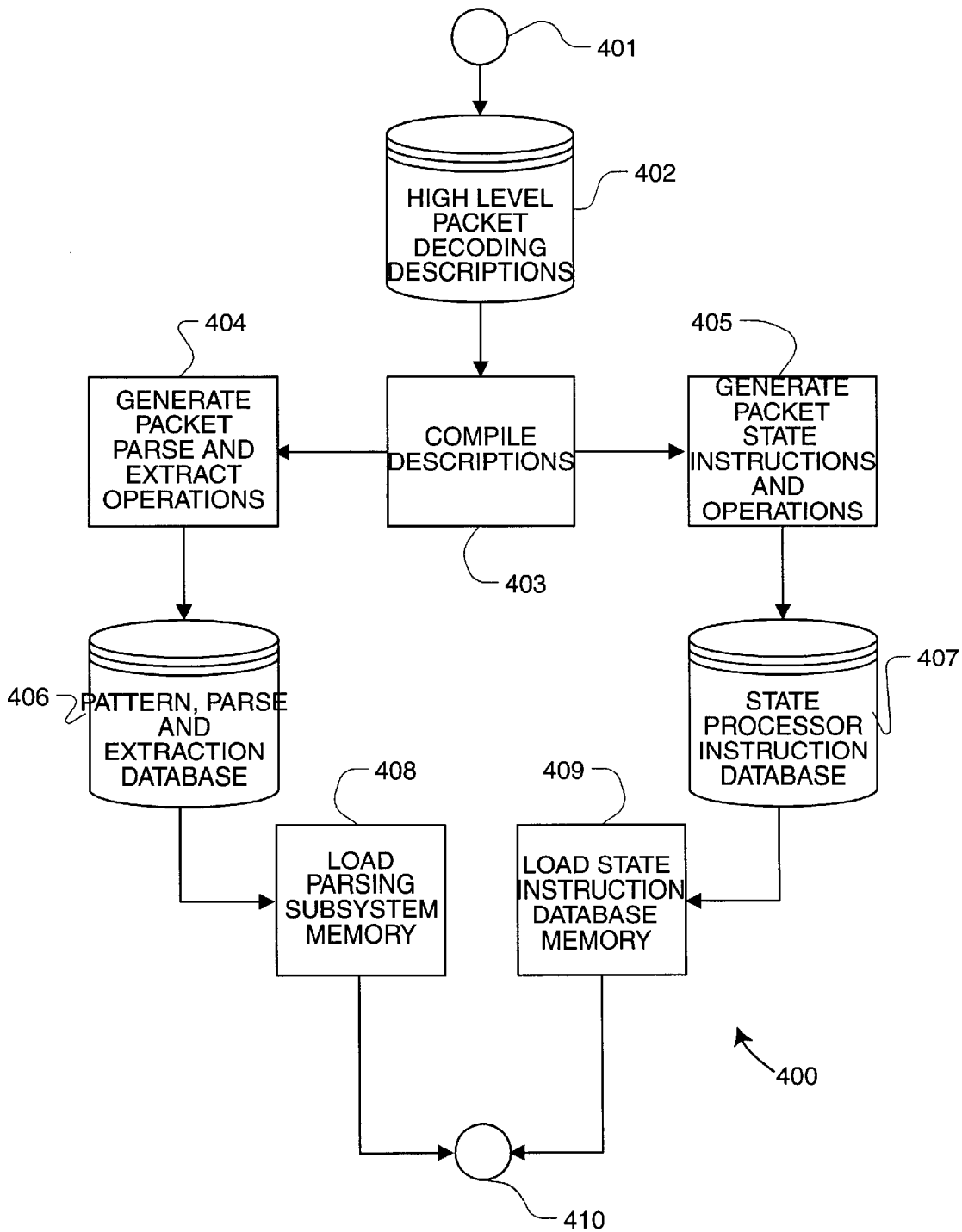


FIG. 4

Explore Litigation Insights

Docket Alarm provides insights to develop a more informed litigation strategy and the peace of mind of knowing you're on top of things.

Real-Time Litigation Alerts



Keep your litigation team up-to-date with **real-time alerts** and advanced team management tools built for the enterprise, all while greatly reducing PACER spend.

Our comprehensive service means we can handle Federal, State, and Administrative courts across the country.

Advanced Docket Research



With over 230 million records, Docket Alarm's cloud-native docket research platform finds what other services can't. Coverage includes Federal, State, plus PTAB, TTAB, ITC and NLRB decisions, all in one place.

Identify arguments that have been successful in the past with full text, pinpoint searching. Link to case law cited within any court document via Fastcase.

Analytics At Your Fingertips



Learn what happened the last time a particular judge, opposing counsel or company faced cases similar to yours.

Advanced out-of-the-box PTAB and TTAB analytics are always at your fingertips.

API

Docket Alarm offers a powerful API (application programming interface) to developers that want to integrate case filings into their apps.

LAW FIRMS

Build custom dashboards for your attorneys and clients with live data direct from the court.

Automate many repetitive legal tasks like conflict checks, document management, and marketing.

FINANCIAL INSTITUTIONS

Litigation and bankruptcy checks for companies and debtors.

E-DISCOVERY AND LEGAL VENDORS

Sync your system to PACER to automate legal marketing.