



US006141563A

**United States Patent** [19]  
**Miller et al.**

[11] **Patent Number:** **6,141,563**  
[45] **Date of Patent:** **Oct. 31, 2000**

[54] **SIM CARD SECURED SUBSCRIBER UNIT**  
[75] Inventors: **Michael Addison Miller**, Chandler;  
**James Morris Tooker**, Phoenix, both  
of Ariz.

5,444,764 8/1995 Galecki ..... 455/558  
5,687,216 11/1997 Svensson ..... 379/357  
5,875,404 2/1999 Messiet ..... 455/558  
5,884,168 3/1999 Kolev et al. .... 455/551

[73] Assignee: **Motorola, Inc.**, Schaumburg, Ill.  
[21] Appl. No.: **08/991,580**  
[22] Filed: **Dec. 16, 1997**

**FOREIGN PATENT DOCUMENTS**  
0607767A1 7/1994 European Pat. Off. .

*Primary Examiner*—Dwayne D. Bost  
*Assistant Examiner*—Nay Maung  
*Attorney, Agent, or Firm*—Bradley J. Botsch

[51] **Int. Cl.**<sup>7</sup> ..... **H04Q 7/20**  
[52] **U.S. Cl.** ..... **455/558; 455/411; 455/550;**  
379/357  
[58] **Field of Search** ..... 455/90, 403, 410,  
455/411, 418, 422, 550, 551, 558, 566,  
575; 379/357; 235/375, 380, 382, 384,  
385, 474, 492; 902/26; 340/825.3, 825.34;  
380/23, 25

[57] **ABSTRACT**

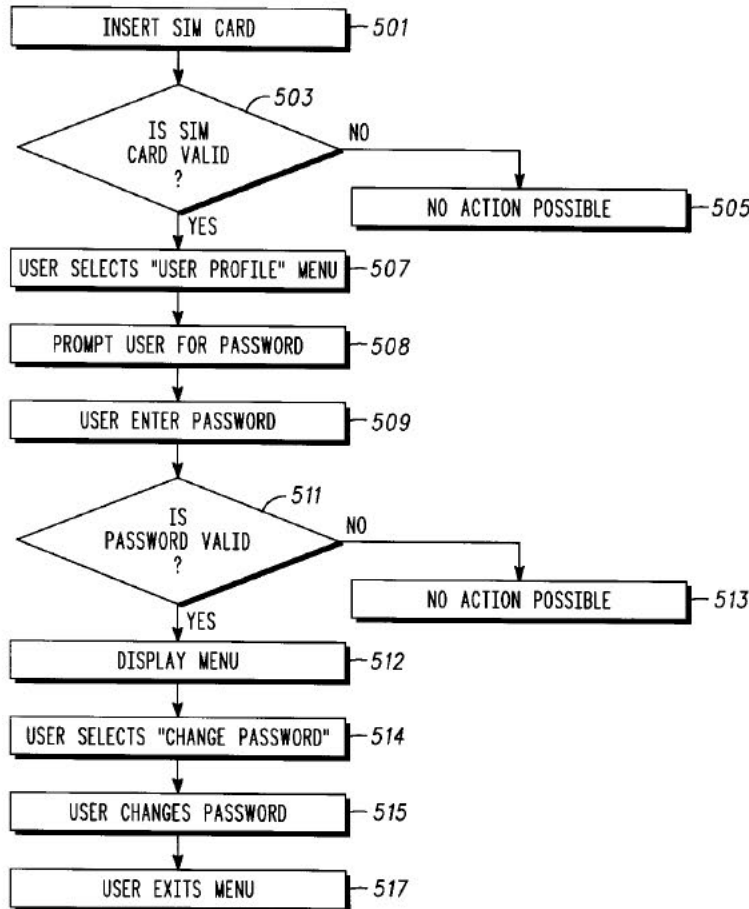
A subscriber unit (101) includes a SIM card reader (107) for receiving a SIM card (105). The subscriber unit (101) is serialized and has stored therein an alphanumeric signature value which is associated with the specific serialized subscriber unit (101). The subscriber unit (101) is fully operable only with a SIM card (105) having stored therein the specific signature value corresponding to the serialized subscriber unit (101). A user having a SIM card (105) containing the specific signature value for that subscriber unit can select a mode of user operation which will permit multiple selected SIM card holding users to use the subscriber unit.

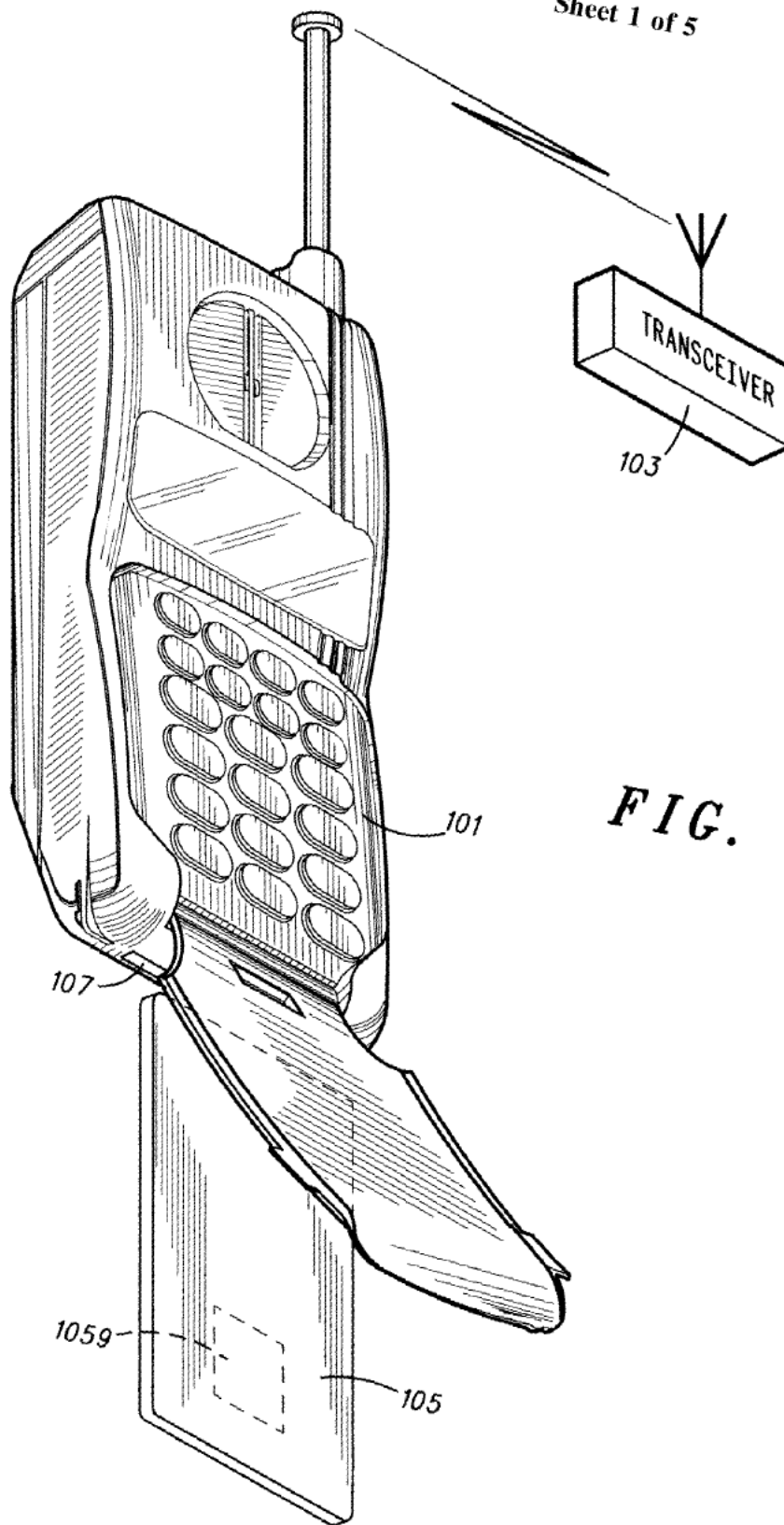
[56] **References Cited**

**U.S. PATENT DOCUMENTS**

5,404,580 4/1995 Simpson et al. .... 455/558  
5,418,837 5/1995 Johansson et al. .... 379/357

**14 Claims, 5 Drawing Sheets**





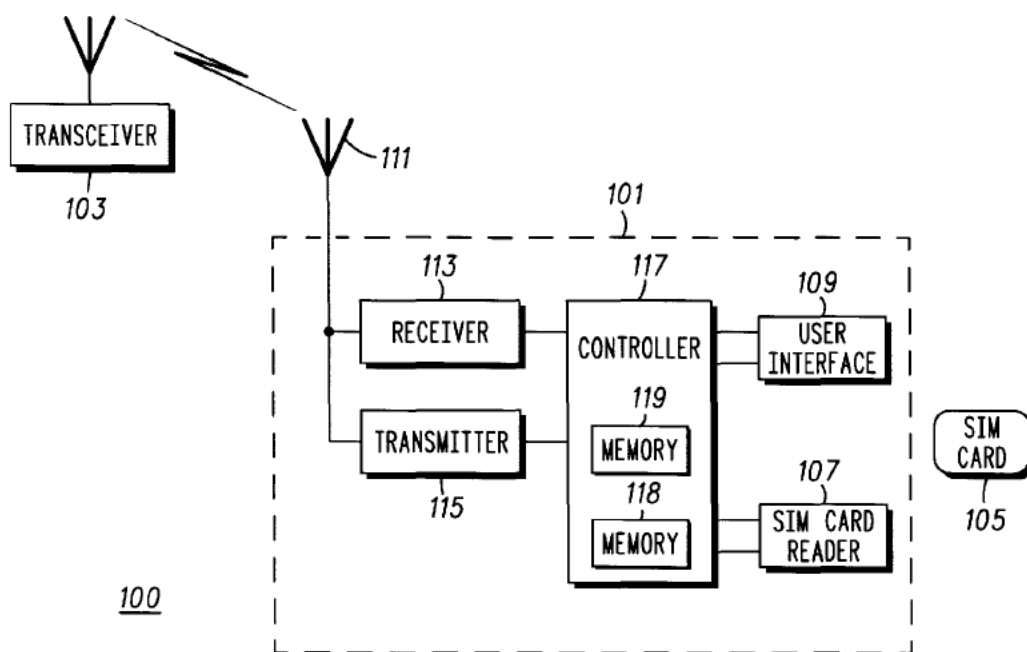


FIG. 2

	SU SERIAL NUMBER	SU SIGNATURE VALUE	
301	00000001	87396736A	302
303	00000002	17639754C	304
305	00000003	98736514F	306

FIG. 3

USER MODE	ALLOWABLE SIM LIST
401	SINGLE SIM 87839676A
403	MULTIPLE SIM 87839676A SIM 17639754C SIM 98736514F ⋮
405	OPEN ANY VALID SIM

FIG. 4

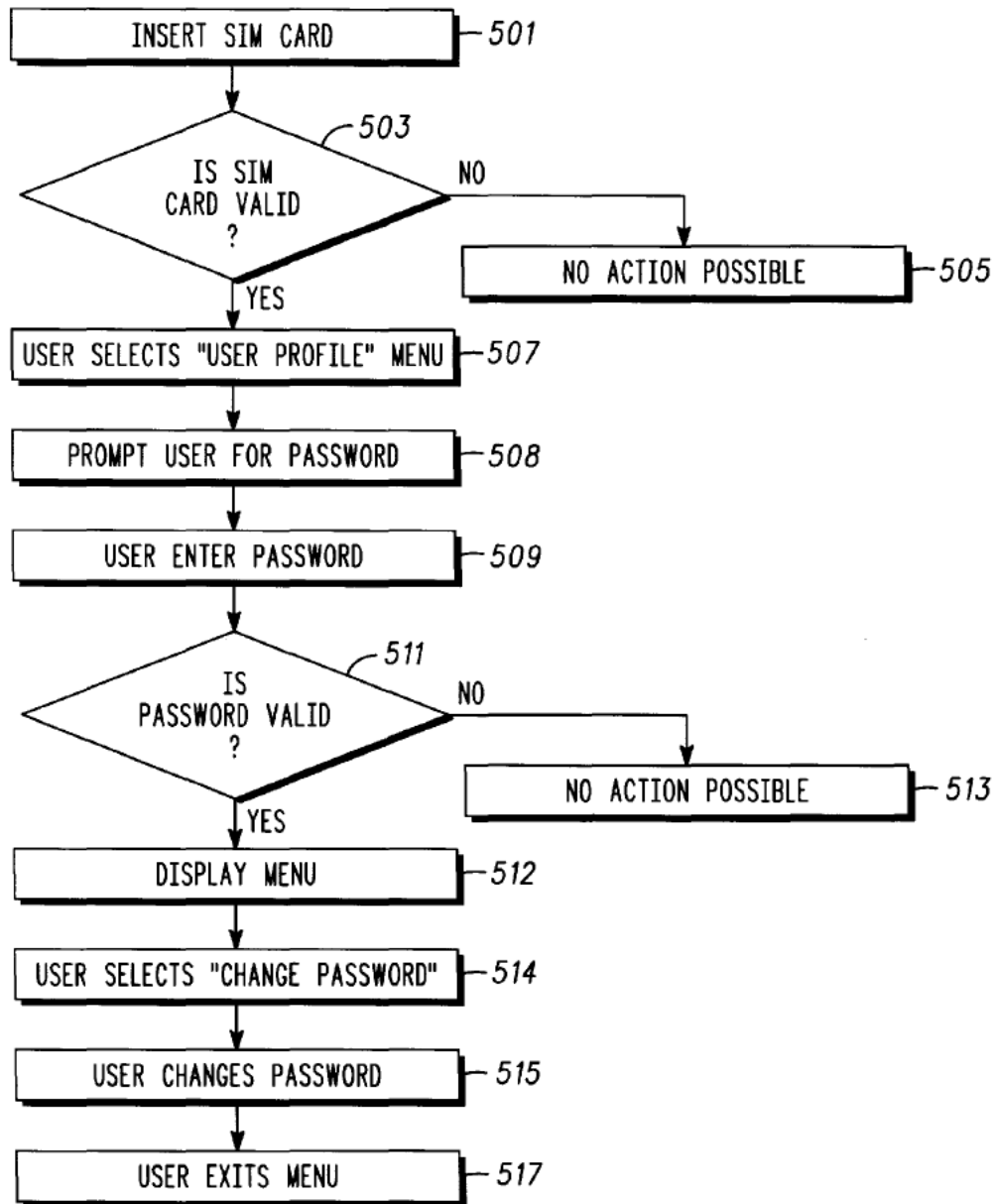


FIG. 5

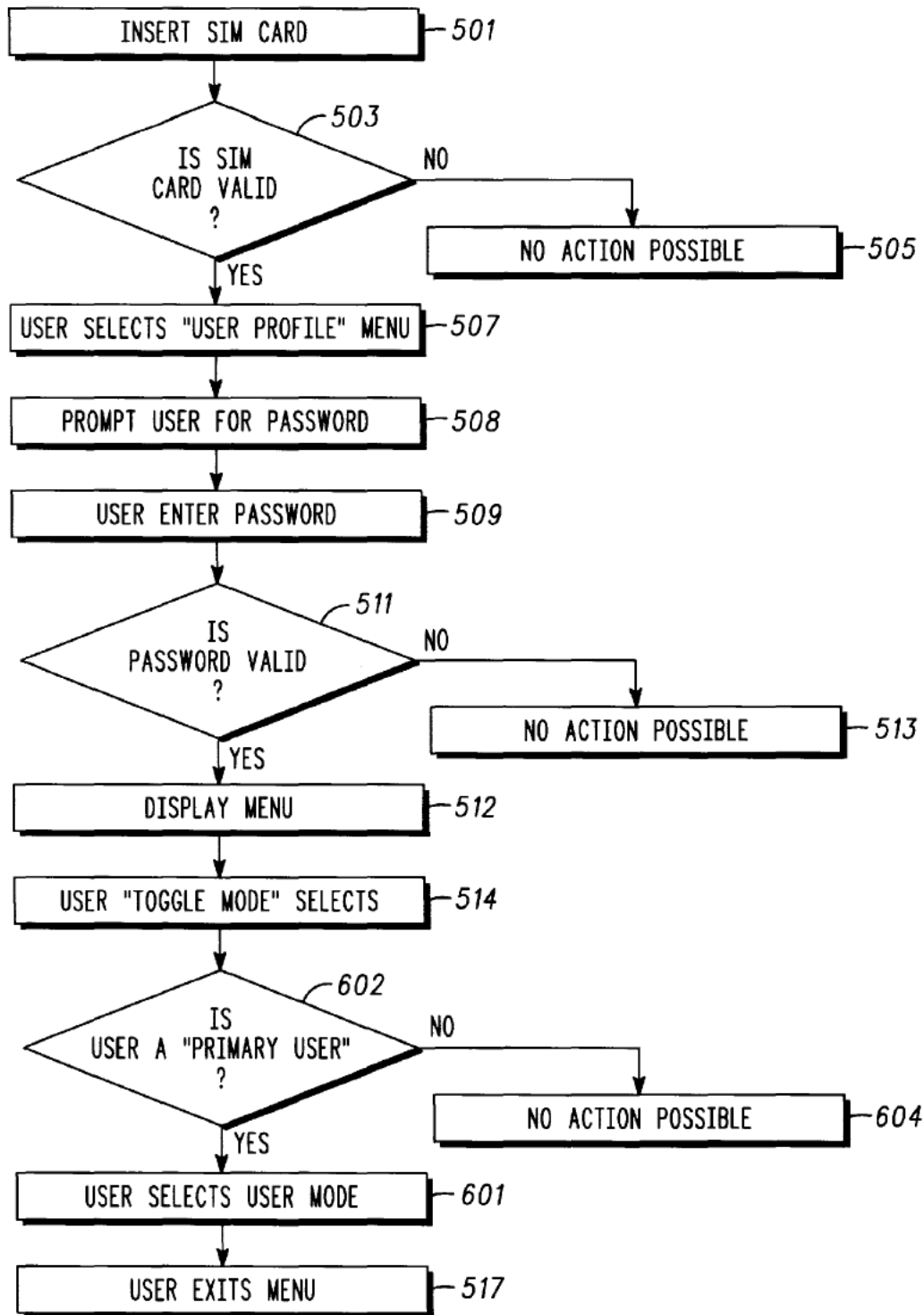


FIG. 6

# Explore Litigation Insights

Docket Alarm provides insights to develop a more informed litigation strategy and the peace of mind of knowing you're on top of things.

## Real-Time Litigation Alerts



Keep your litigation team up-to-date with **real-time alerts** and advanced team management tools built for the enterprise, all while greatly reducing PACER spend.

Our comprehensive service means we can handle Federal, State, and Administrative courts across the country.

## Advanced Docket Research



With over 230 million records, Docket Alarm's cloud-native docket research platform finds what other services can't. Coverage includes Federal, State, plus PTAB, TTAB, ITC and NLRB decisions, all in one place.

Identify arguments that have been successful in the past with full text, pinpoint searching. Link to case law cited within any court document via Fastcase.

## Analytics At Your Fingertips



Learn what happened the last time a particular judge, opposing counsel or company faced cases similar to yours.

Advanced out-of-the-box PTAB and TTAB analytics are always at your fingertips.

## API

Docket Alarm offers a powerful API (application programming interface) to developers that want to integrate case filings into their apps.

## LAW FIRMS

Build custom dashboards for your attorneys and clients with live data direct from the court.

Automate many repetitive legal tasks like conflict checks, document management, and marketing.

## FINANCIAL INSTITUTIONS

Litigation and bankruptcy checks for companies and debtors.

## E-DISCOVERY AND LEGAL VENDORS

Sync your system to PACER to automate legal marketing.