



US005913175A

United States Patent [19]
Pinault

[11] **Patent Number:** **5,913,175**
[45] **Date of Patent:** **Jun. 15, 1999**

[54] **METHOD OF MAKING THE USE OF A TERMINAL OF A CELLULAR MOBILE RADIO SYSTEM MORE SECURE, AND CORRESPONDING TERMINAL AND USER CARD**

[75] Inventor: **Francis Pinault**, Bois Colombes, France
[73] Assignee: **Alcatel Mobile Phones**, Paris, France

[21] Appl. No.: **08/777,734**
[22] Filed: **Dec. 20, 1996**

[30] **Foreign Application Priority Data**
Dec. 21, 1995 [FR] France 95 15283

[51] **Int. Cl.⁶** **H04Q 7/32**
[52] **U.S. Cl.** **455/558; 455/410; 455/411**
[58] **Field of Search** 455/410, 411, 455/557, 558; 379/114, 143, 357; 235/380, 382; 380/21, 28, 30, 23, 3

[56] **References Cited**

U.S. PATENT DOCUMENTS

4,736,419	4/1988	Roe	380/23
5,390,252	2/1995	Suzuki et al.	455/411
5,444,764	8/1995	Galecki	455/558
5,600,708	2/1997	Meche et al.	455/411
5,604,787	2/1997	Kotzin et al.	455/558
5,617,470	4/1997	Depasquale	379/114
5,661,806	8/1997	Nevoux et al.	380/25
5,675,607	10/1997	Alesio et al.	379/114
5,742,910	4/1998	Gallant et al.	455/558
5,748,720	5/1998	Loder	455/407
5,761,624	6/1998	Mooney et al.	455/558

FOREIGN PATENT DOCUMENTS

03 01 740 A2 2/1989 European Pat. Off. .

OTHER PUBLICATIONS

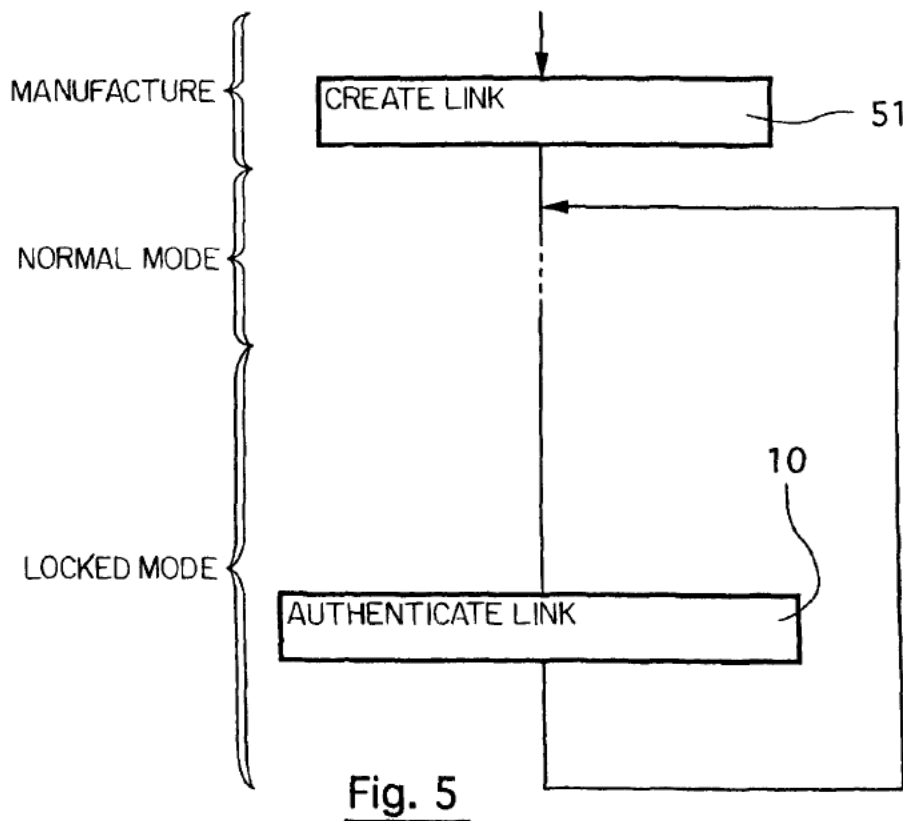
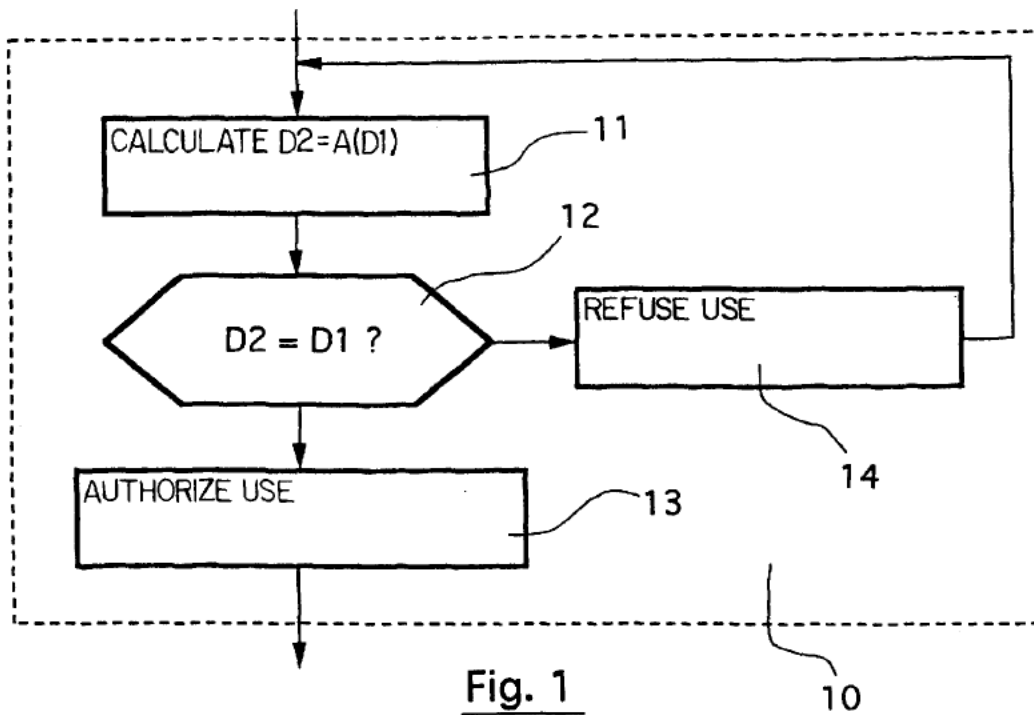
J. K. Omura, "A computer dial access system based on public-key techniques", *IEEE Communications Magazine*, Jul. 1987, vol. 25, No. 7, Jul. 1987, ISSN 0163-6804, pp. 73-79.

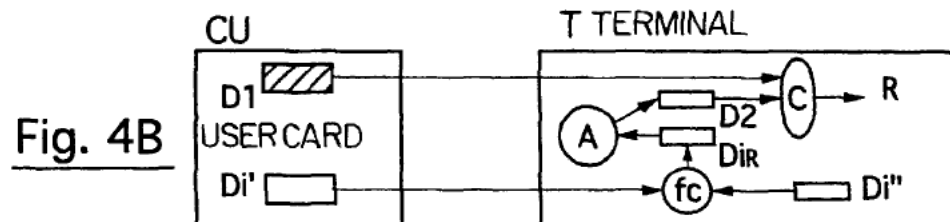
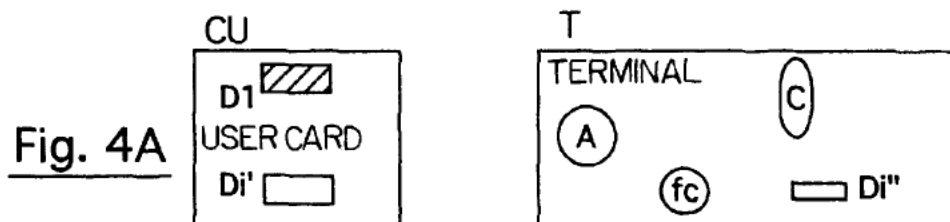
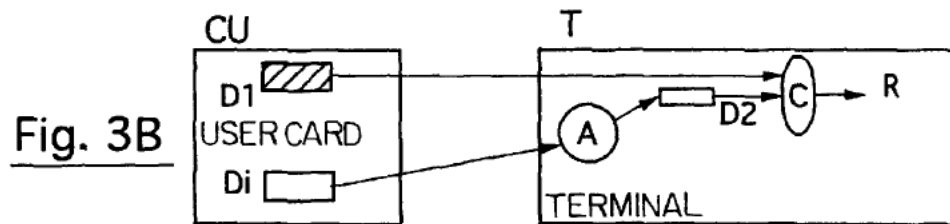
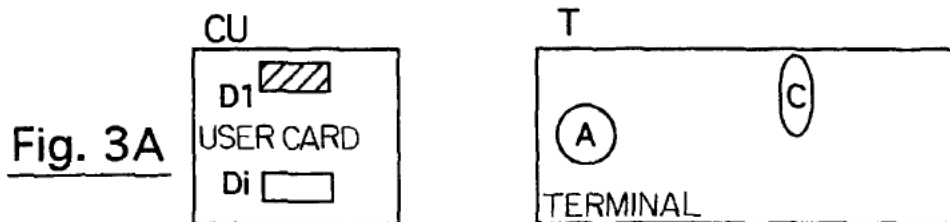
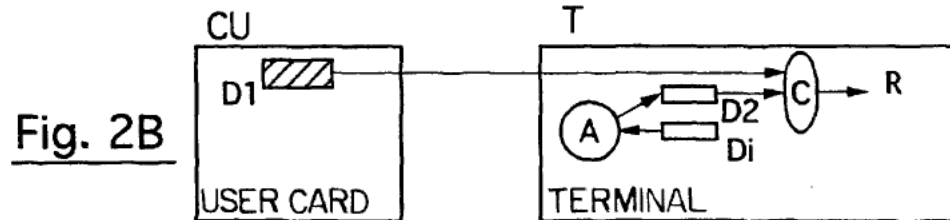
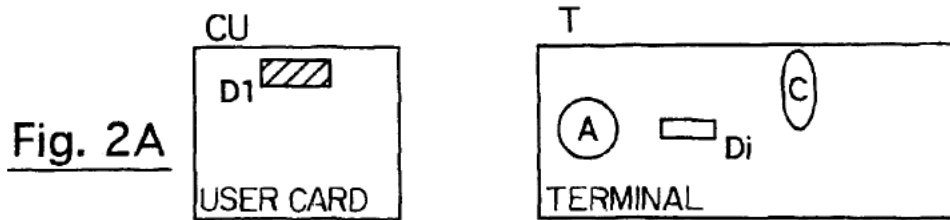
Primary Examiner—Dwayne D. Bost
Assistant Examiner—Jean A. Gelin
Attorney, Agent, or Firm—Sughrue, Mion, Zinn, Macpeak & Seas, PLLC

[57] **ABSTRACT**

A terminal of a cellular mobile radio system cooperates with a user card and is able to operate in at least two separate operating modes, namely a normal mode in which it can be used with any user card and a locked mode in which it can be used only with the user card to which it is locked, the latter constituting a linked user card. To make use of the terminal more secure, first locking data is stored in a memory area of the linked user card and, in the locked mode, the method includes a phase of authentication by the terminal of the user card with which it is cooperating. In the authentication phase second locking data is calculated in the terminal from the intermediate data read in a memory area accessible to the terminal using a calculation function specific to the terminal, and the first and second locking data is compared in the terminal and use of the terminal is authorized only in the event of equality, that is to say if the user card with which the terminal is cooperating is authenticated as the linked user card.

21 Claims, 5 Drawing Sheets





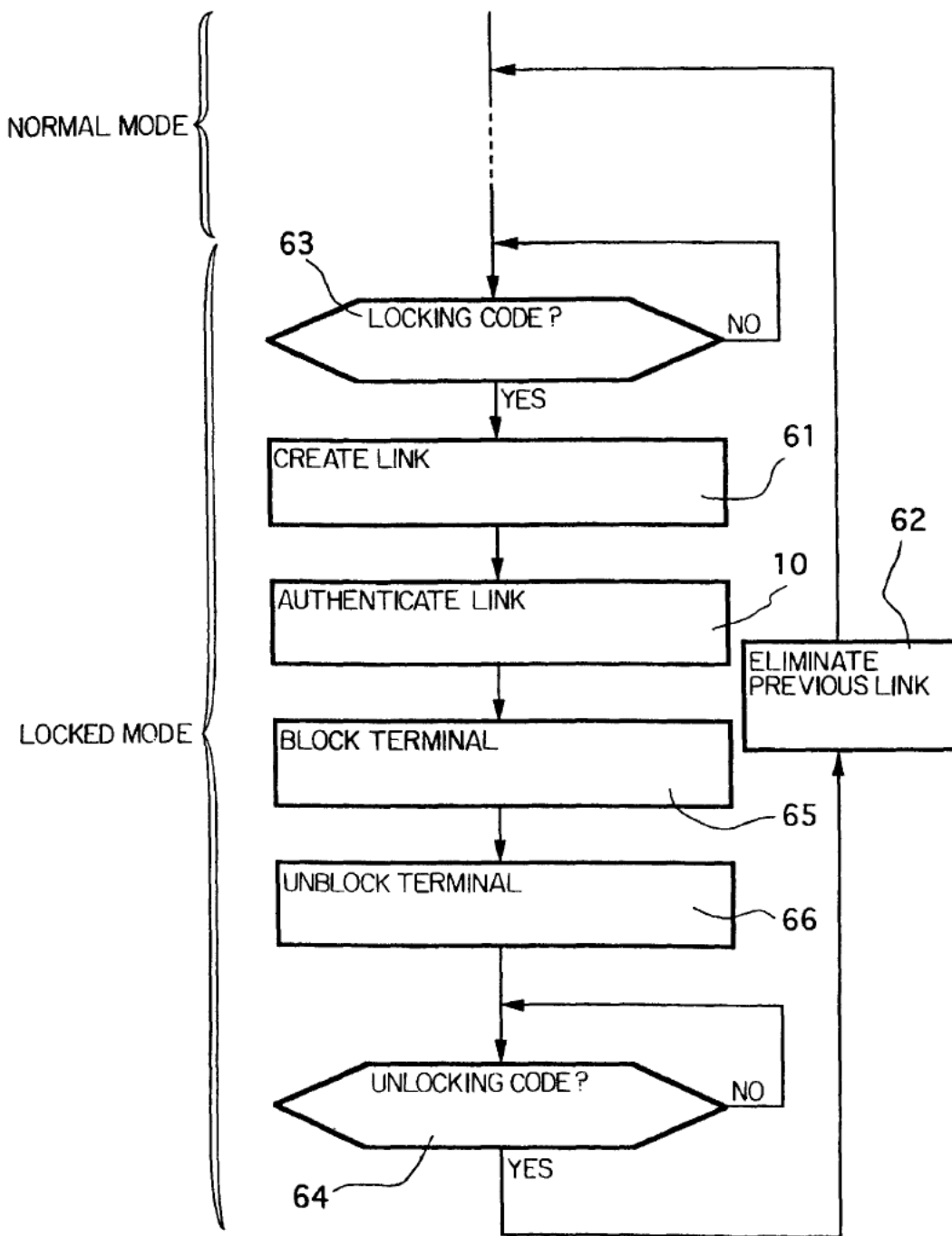


Fig. 6

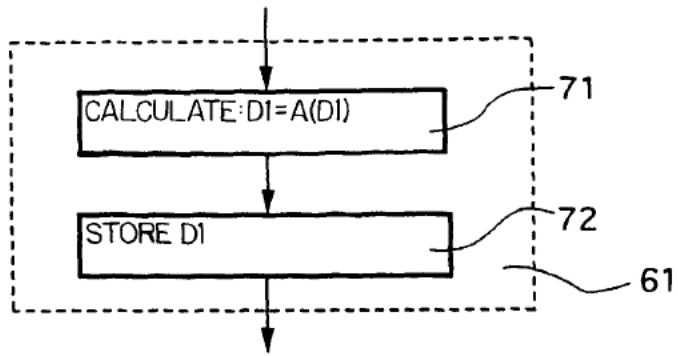


Fig. 7

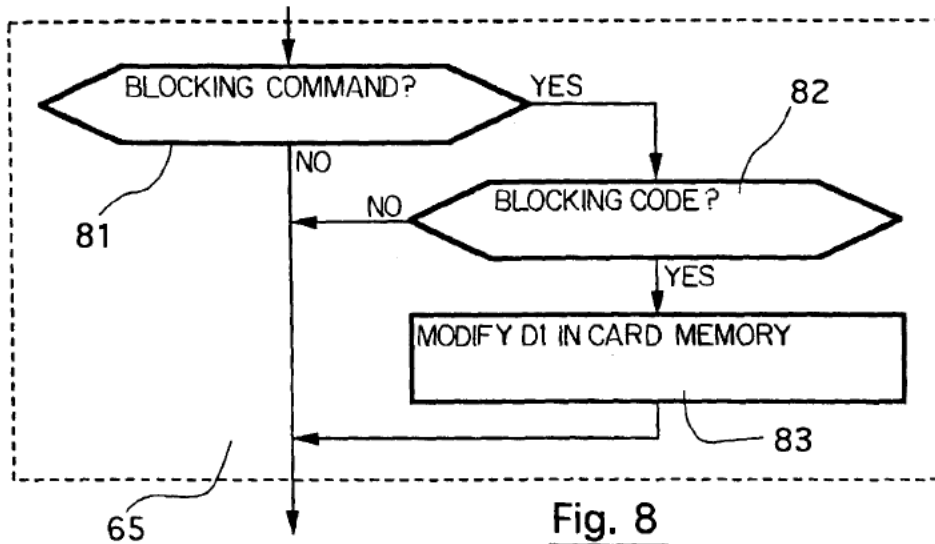


Fig. 8

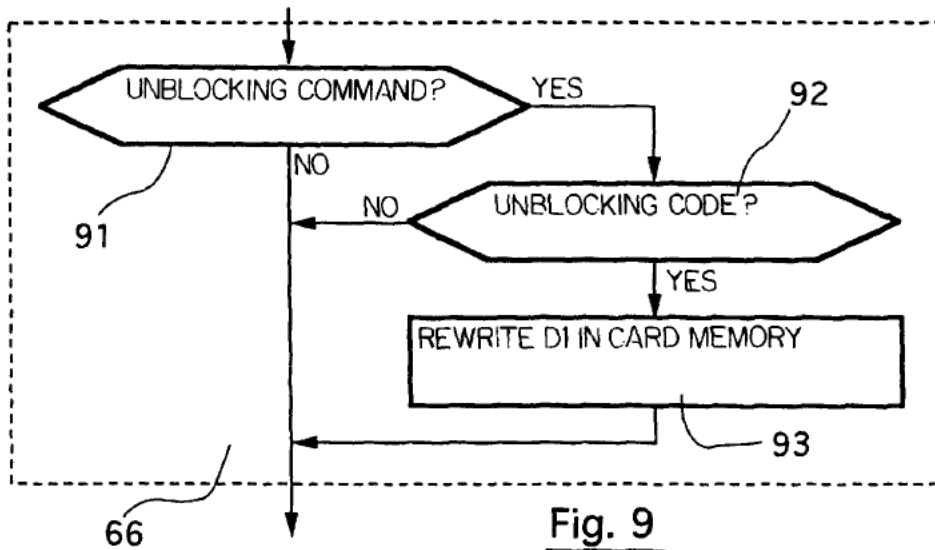


Fig. 9

Explore Litigation Insights

Docket Alarm provides insights to develop a more informed litigation strategy and the peace of mind of knowing you're on top of things.

Real-Time Litigation Alerts



Keep your litigation team up-to-date with **real-time alerts** and advanced team management tools built for the enterprise, all while greatly reducing PACER spend.

Our comprehensive service means we can handle Federal, State, and Administrative courts across the country.

Advanced Docket Research



With over 230 million records, Docket Alarm's cloud-native docket research platform finds what other services can't. Coverage includes Federal, State, plus PTAB, TTAB, ITC and NLRB decisions, all in one place.

Identify arguments that have been successful in the past with full text, pinpoint searching. Link to case law cited within any court document via Fastcase.

Analytics At Your Fingertips



Learn what happened the last time a particular judge, opposing counsel or company faced cases similar to yours.

Advanced out-of-the-box PTAB and TTAB analytics are always at your fingertips.

API

Docket Alarm offers a powerful API (application programming interface) to developers that want to integrate case filings into their apps.

LAW FIRMS

Build custom dashboards for your attorneys and clients with live data direct from the court.

Automate many repetitive legal tasks like conflict checks, document management, and marketing.

FINANCIAL INSTITUTIONS

Litigation and bankruptcy checks for companies and debtors.

E-DISCOVERY AND LEGAL VENDORS

Sync your system to PACER to automate legal marketing.