



United States Patent [19]

[11] **Patent Number:** **6,158,008**

Maria et al.

[45] **Date of Patent:** ***Dec. 5, 2000**

[54] **METHOD AND APPARATUS FOR UPDATING ADDRESS LISTS FOR A PACKET FILTER PROCESSOR**

[75] Inventors: **Arturo Maria, Bellevue; Leslie Dale Owens, Issaquah, both of Wash.**

[73] Assignee: **AT&T Wireless Svcs. Inc., Redmond, Wash.**

[*] Notice: This patent issued on a continued prosecution application filed under 37 CFR 1.53(d), and is subject to the twenty year patent term provisions of 35 U.S.C. 154(a)(2).

[21] Appl. No.: **08/956,990**

[22] Filed: **Oct. 23, 1997**

[51] **Int. Cl.⁷** **G06F 11/30**

[52] **U.S. Cl.** **713/201; 713/154**

[58] **Field of Search** **713/200, 201, 713/202, 100, 153, 154; 709/225, 229, 242; 707/9; 380/23, 25**

[56] **References Cited**

U.S. PATENT DOCUMENTS

4,184,117	1/1980	Lindner	325/33
4,888,796	12/1989	Olivo, Jr.	379/101
5,172,111	12/1992	Olivo, Jr.	340/825.31
5,396,493	3/1995	Sugiyama	370/60
5,448,698	9/1995	Wilkes	395/200.01
5,481,720	1/1996	Loucks et al.	395/700
5,553,315	9/1996	Sobti et al.	455/56.1
5,561,770	10/1996	de Bruijn et al.	395/200.06
5,606,668	2/1997	Shwed	395/200.11
5,615,340	3/1997	Dai et al.	395/200.17
5,627,886	5/1997	Bowman	379/111

5,632,011	5/1997	Landfield et al.	395/326
5,655,152	8/1997	Ohnishi et al.	395/856
5,678,041	10/1997	Baker et al.	395/609
5,684,951	11/1997	Goldman et al.	395/188.01
5,757,924	5/1998	Friedman et al.	380/49
5,802,319	9/1998	Faulk, Jr. et al.	395/200.79
5,825,891	10/1998	Levesque et al.	380/49
5,828,833	10/1998	Belville et al.	395/187.01
6,035,423	3/2000	Hodges et al.	714/38

FOREIGN PATENT DOCUMENTS

WO97/15008	4/1997	WIPO .
WO98/28690	7/1998	WIPO .

OTHER PUBLICATIONS

Microsoft Press, "Computer Dictionary, 2nd ed.", pp. 105-106.

Primary Examiner—Robert W. Beausoliel, Jr.

Assistant Examiner—Scott T. Baderman

[57] **ABSTRACT**

A dedicated data packet filtering processor whose only function is to filter data packets based on a list of source IP addresses stored in high-speed memory of the processor. The processor has a specialized operating system which controls the operation of the processor. The processor examines the source IP address of each received data packet to determine if the source IP address matches one of the stored source IP addresses, and if there is a match, either discards or forwards the data packet depending on the processor configuration. The list of source IP addresses are updated by a service provider having a central administrative site. The service provider keeps these lists up to date and periodically updates the source IP addresses stored in the random access memory of the dedicated IP filtering processors.

9 Claims, 4 Drawing Sheets

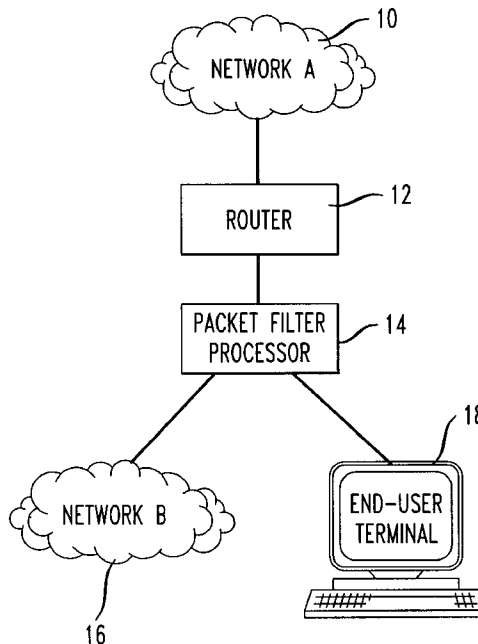


FIG. 1

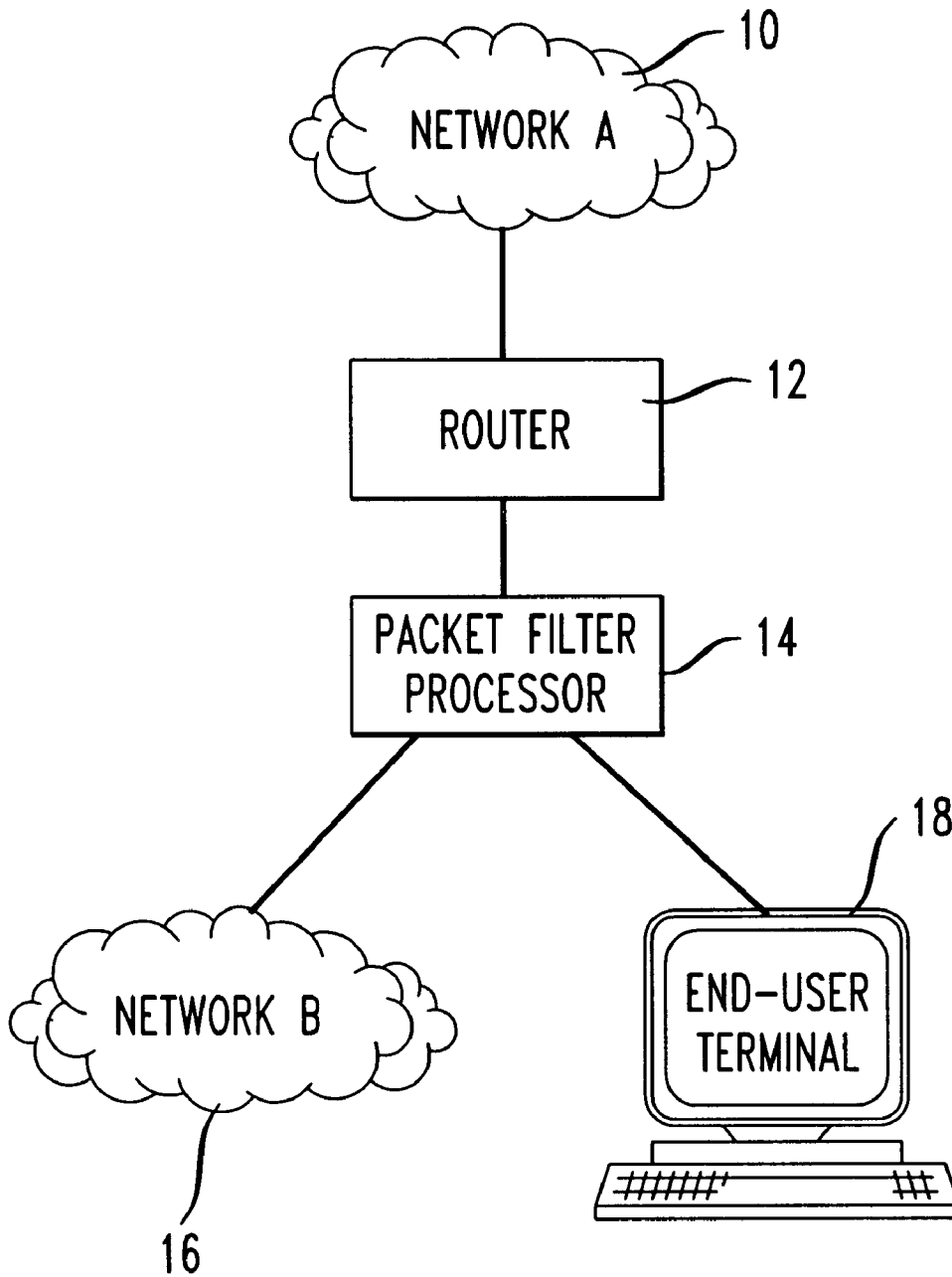


FIG. 2

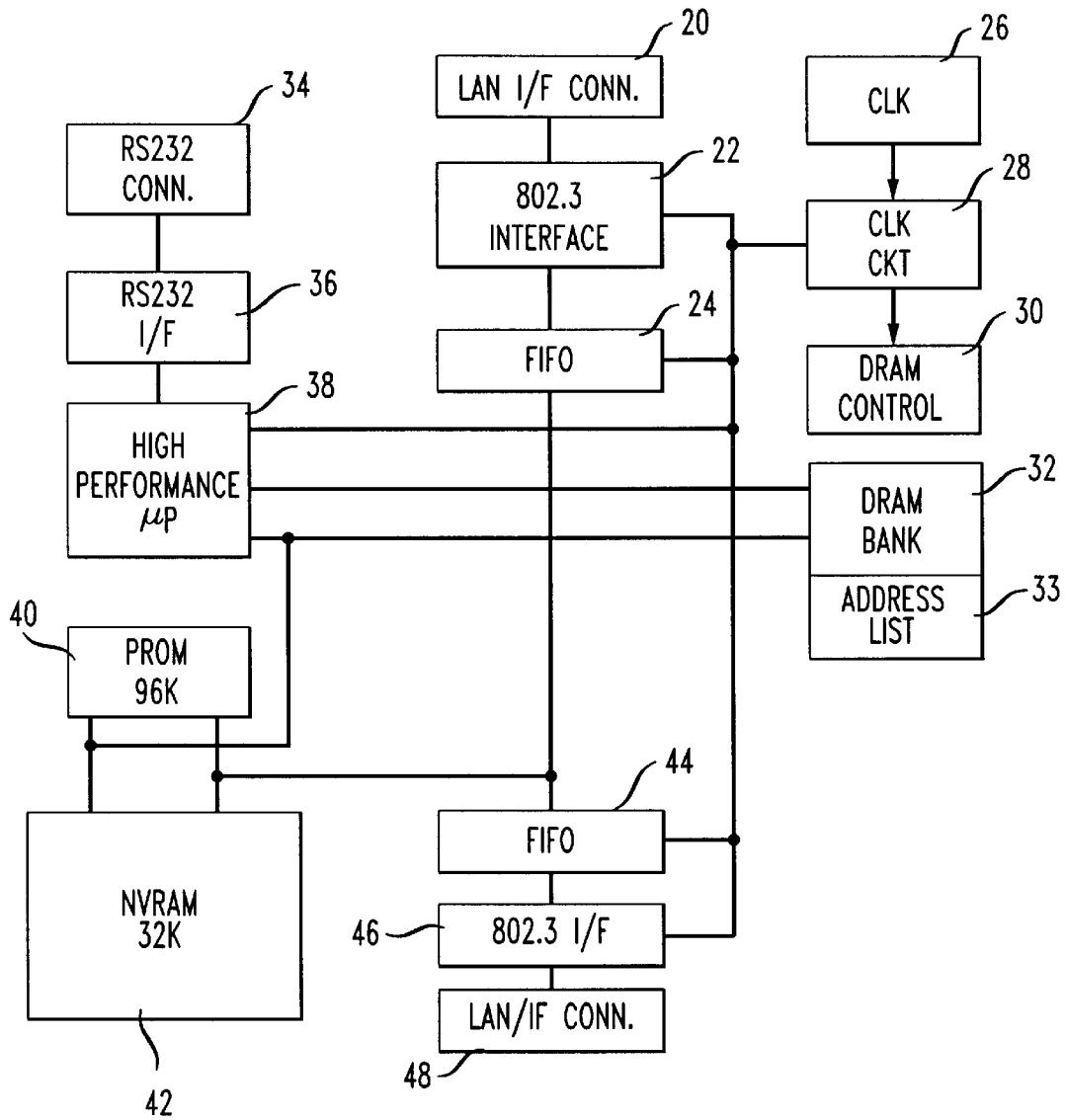


FIG. 3

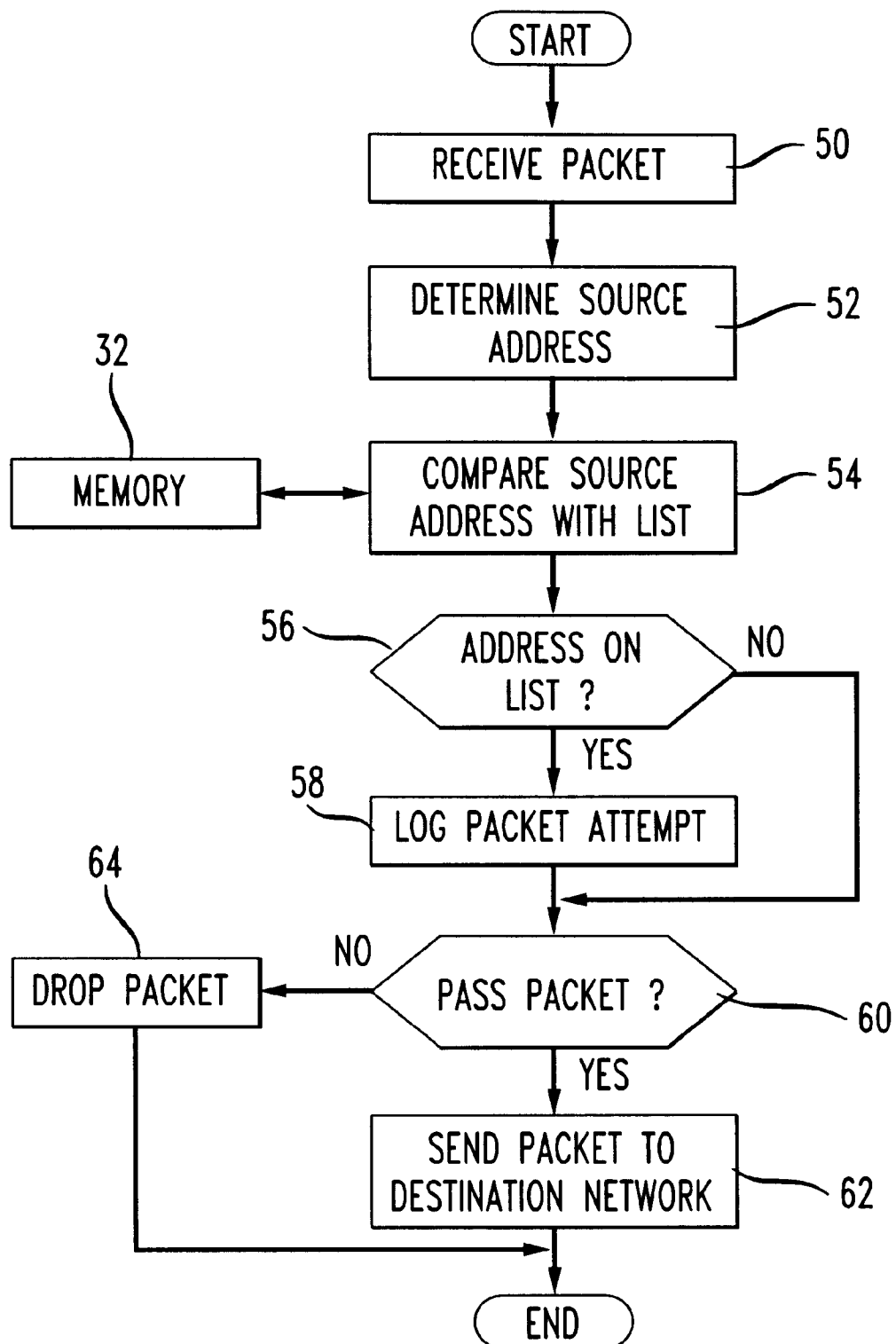
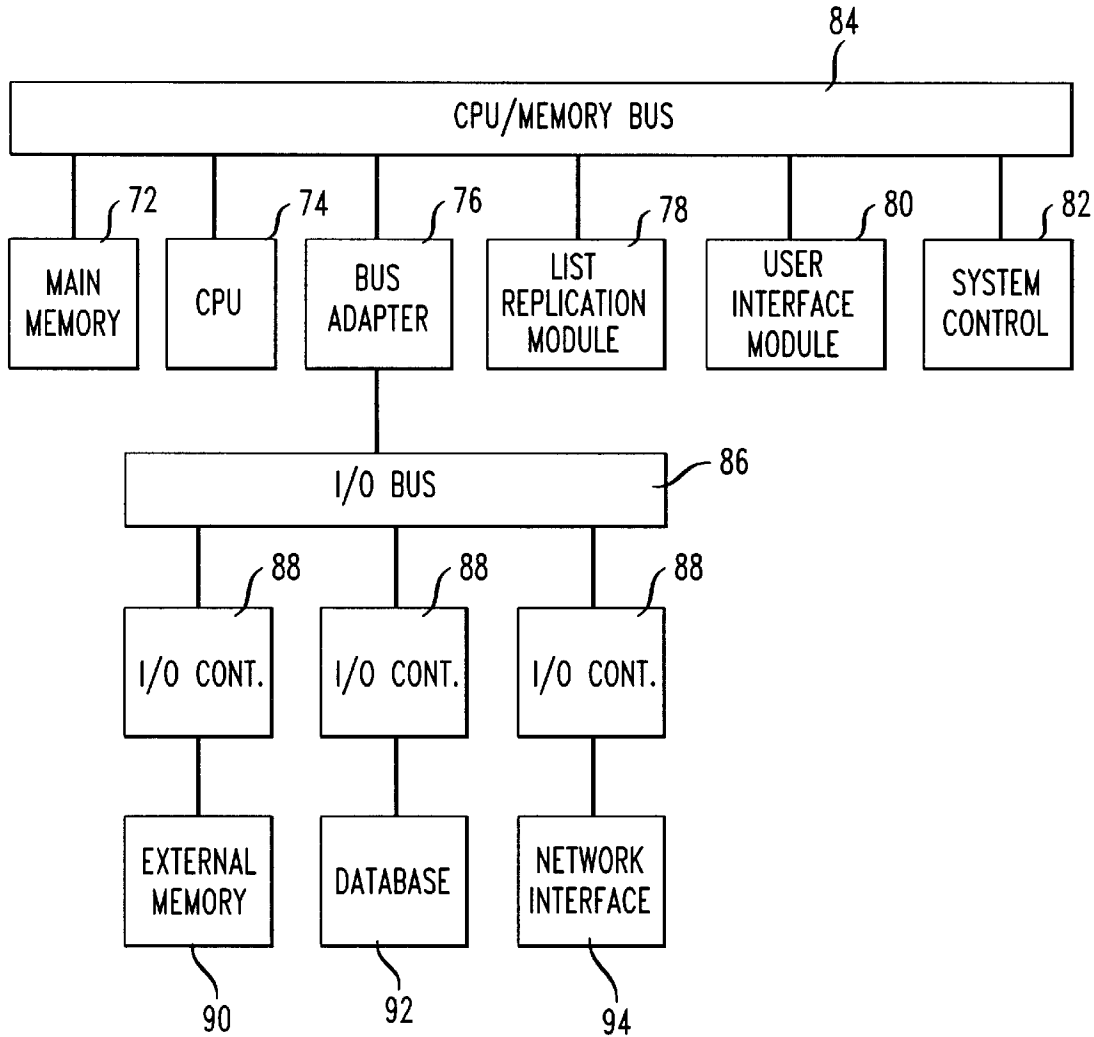


FIG. 4



Explore Litigation Insights

Docket Alarm provides insights to develop a more informed litigation strategy and the peace of mind of knowing you're on top of things.

Real-Time Litigation Alerts



Keep your litigation team up-to-date with **real-time alerts** and advanced team management tools built for the enterprise, all while greatly reducing PACER spend.

Our comprehensive service means we can handle Federal, State, and Administrative courts across the country.

Advanced Docket Research



With over 230 million records, Docket Alarm's cloud-native docket research platform finds what other services can't. Coverage includes Federal, State, plus PTAB, TTAB, ITC and NLRB decisions, all in one place.

Identify arguments that have been successful in the past with full text, pinpoint searching. Link to case law cited within any court document via Fastcase.

Analytics At Your Fingertips



Learn what happened the last time a particular judge, opposing counsel or company faced cases similar to yours.

Advanced out-of-the-box PTAB and TTAB analytics are always at your fingertips.

API

Docket Alarm offers a powerful API (application programming interface) to developers that want to integrate case filings into their apps.

LAW FIRMS

Build custom dashboards for your attorneys and clients with live data direct from the court.

Automate many repetitive legal tasks like conflict checks, document management, and marketing.

FINANCIAL INSTITUTIONS

Litigation and bankruptcy checks for companies and debtors.

E-DISCOVERY AND LEGAL VENDORS

Sync your system to PACER to automate legal marketing.