



US005456237A

United States Patent [19]

[11] **Patent Number:** 5,456,237

Yamazaki et al.

[45] **Date of Patent:** Oct. 10, 1995

[54] **EVAPORATIVE FUEL PROCESSING DEVICE**

5,393,329 2/1995 Inagaki 123/519 R

[75] **Inventors:** Kazumi Yamazaki; Koichi Hidano; Teruo Wakashiro; Takeshi Hara, all of Wako; Tomoyuki Kawakami, Haga, all of Japan

FOREIGN PATENT DOCUMENTS

4121451	4/1992	Japan	123/519
4153556	5/1992	Japan	123/519
5195884	8/1993	Japan	123/519
5280435	10/1993	Japan	123/519

[73] **Assignee:** Honda Giken Kogyo Kabushiki Kaisha, Tokyo, Japan

Primary Examiner—Carl S. Miller
Attorney, Agent, or Firm—Nikaido, Marmelstein, Murray & Oram

[21] **Appl. No.:** 317,804

[22] **Filed:** Oct. 4, 1994

[57] **ABSTRACT**

[30] **Foreign Application Priority Data**

In an evaporative fuel processing device, a canister is divided into first, second, third and fourth chambers by partition walls. A control valve is provided in a communication passage which connects the second and third chambers to each other. A first charge passage is connected to an upper space in a fuel tank and to a port in the third chamber, and a second charge passage is connected to a fuel supply valve for the fuel tank and to a port in the first chamber. Further, a purge passage is connected to an intake passage of an internal combustion engine and to a port in the first chamber. The control valve is connected to an electronic control unit, and opened during refueling and during traveling of a vehicle and closed during parking of the vehicle. Thus, it is possible to reliably prevent an evaporative fuel from being released to the atmosphere, while the capacity of the canister to a minimum.

Oct. 4, 1993 [JP] Japan 5-248245

[51] **Int. Cl.⁶** F02M 33/02

[52] **U.S. Cl.** 123/520; 123/519

[58] **Field of Search** 123/520, 521, 123/518, 519, 516, 198 D; 55/387

[56] **References Cited**

U.S. PATENT DOCUMENTS

4,790,283	12/1988	Uranishi	123/520
4,815,436	3/1989	Sasaki	123/520
4,887,578	12/1989	Woodcock	123/519
4,951,643	8/1990	Sato	123/520
5,056,494	10/1991	Kayanuma	123/516
5,337,721	8/1994	Kasuya	123/519

5 Claims, 7 Drawing Sheets

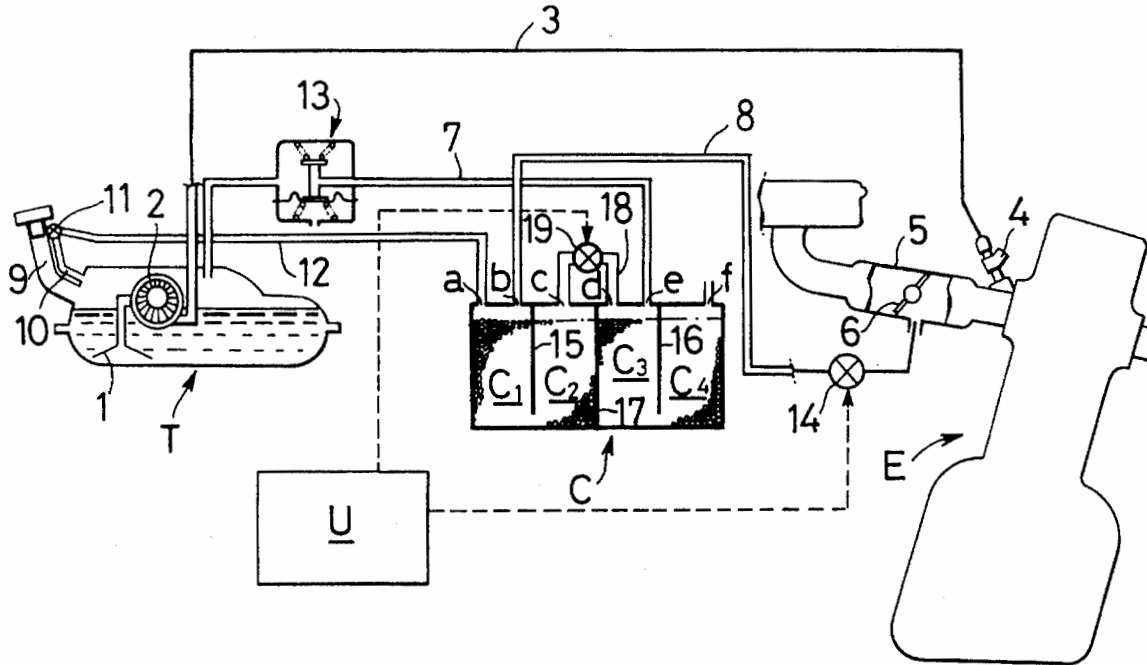


FIG. 1

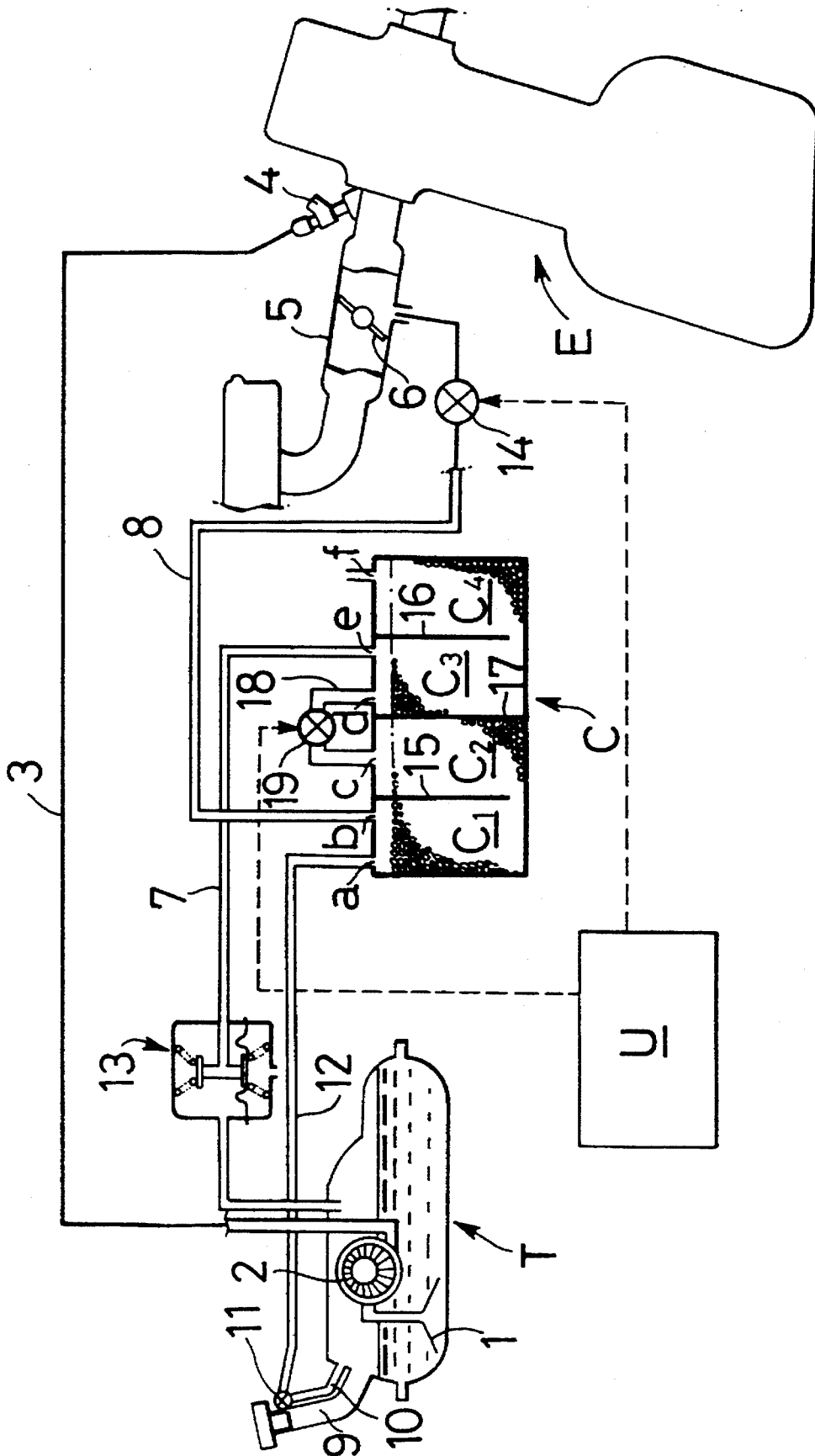


FIG.2A

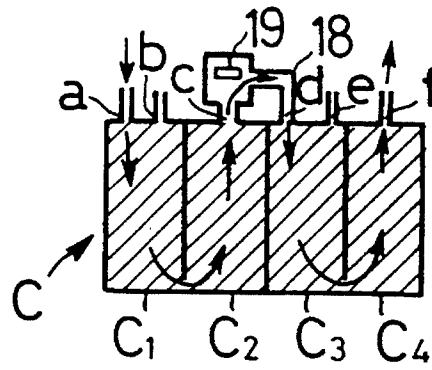


FIG.2B

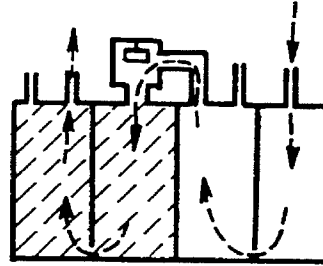


FIG.2C

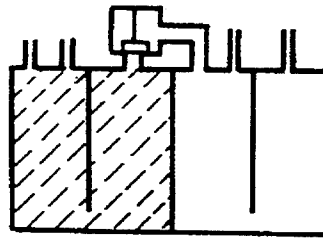


FIG.2D

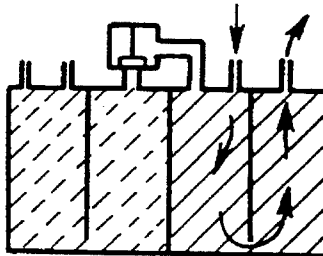


FIG.2E

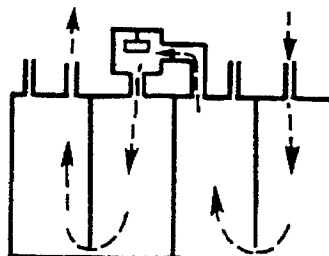


FIG. 3

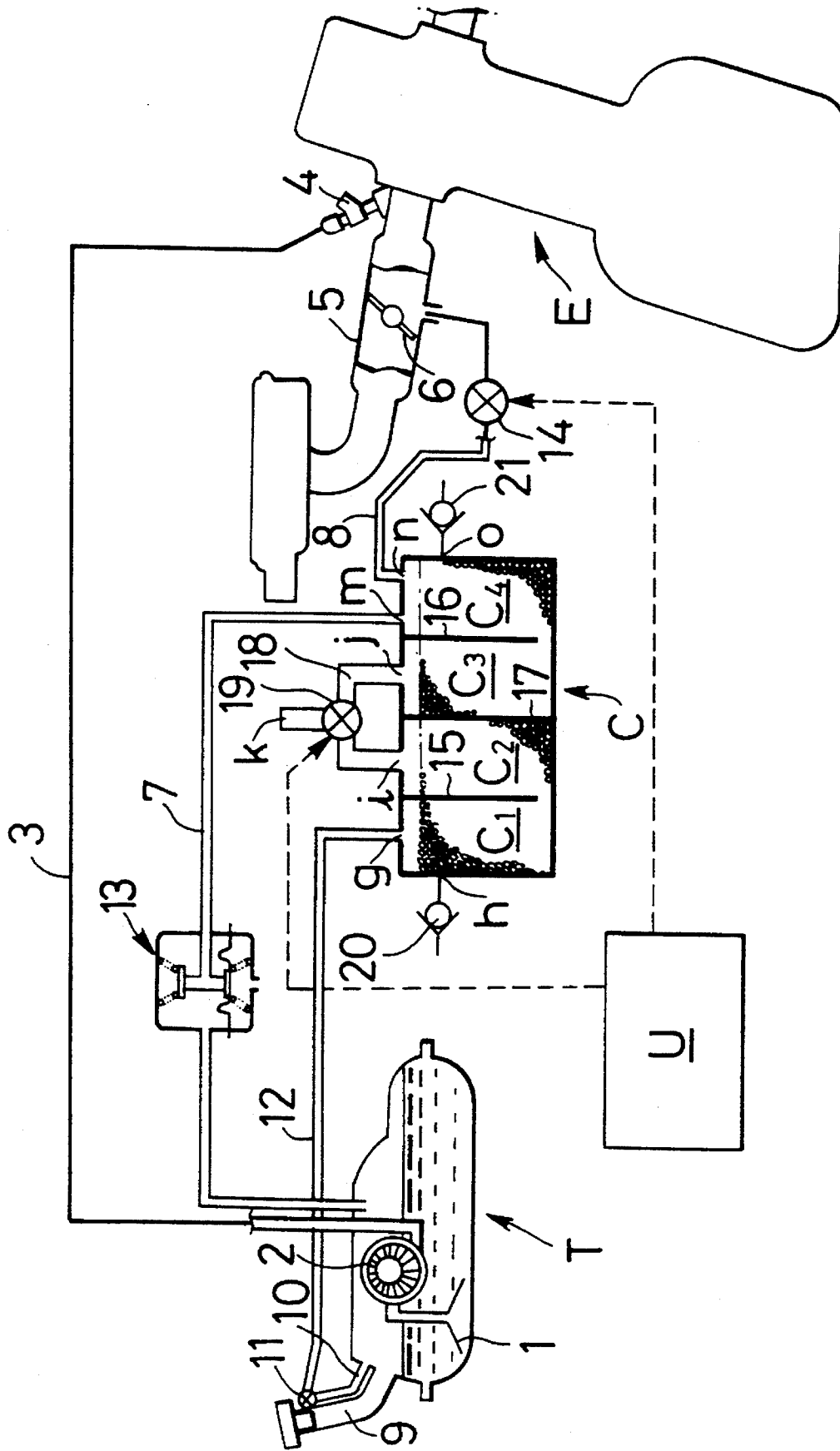


FIG.4A

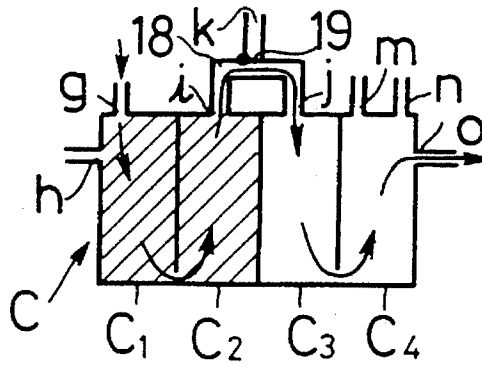


FIG.4B

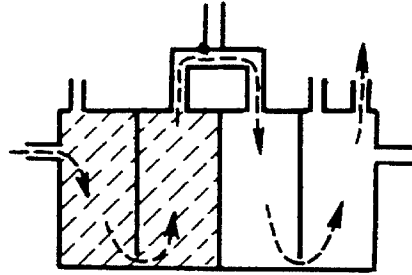


FIG.4C

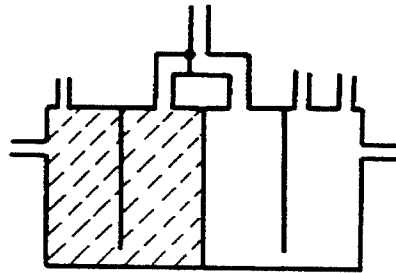


FIG.4D

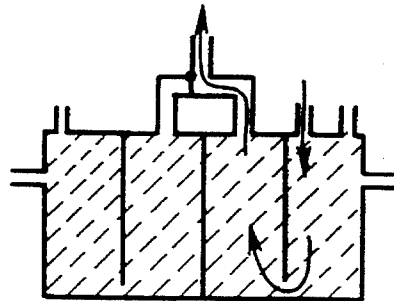
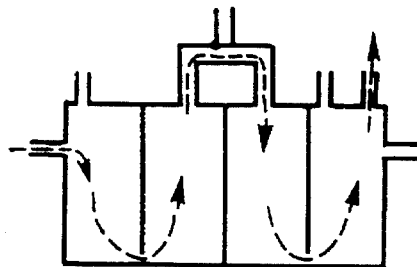


FIG.4E



Explore Litigation Insights

Docket Alarm provides insights to develop a more informed litigation strategy and the peace of mind of knowing you're on top of things.

Real-Time Litigation Alerts



Keep your litigation team up-to-date with **real-time alerts** and advanced team management tools built for the enterprise, all while greatly reducing PACER spend.

Our comprehensive service means we can handle Federal, State, and Administrative courts across the country.

Advanced Docket Research



With over 230 million records, Docket Alarm's cloud-native docket research platform finds what other services can't. Coverage includes Federal, State, plus PTAB, TTAB, ITC and NLRB decisions, all in one place.

Identify arguments that have been successful in the past with full text, pinpoint searching. Link to case law cited within any court document via Fastcase.

Analytics At Your Fingertips



Learn what happened the last time a particular judge, opposing counsel or company faced cases similar to yours.

Advanced out-of-the-box PTAB and TTAB analytics are always at your fingertips.

API

Docket Alarm offers a powerful API (application programming interface) to developers that want to integrate case filings into their apps.

LAW FIRMS

Build custom dashboards for your attorneys and clients with live data direct from the court.

Automate many repetitive legal tasks like conflict checks, document management, and marketing.

FINANCIAL INSTITUTIONS

Litigation and bankruptcy checks for companies and debtors.

E-DISCOVERY AND LEGAL VENDORS

Sync your system to PACER to automate legal marketing.