



(19) **United States**

(12) **Patent Application Publication**  
**Fung**

(10) **Pub. No.: US 2002/0004912 A1**

(43) **Pub. Date: Jan. 10, 2002**

(54) **SYSTEM, ARCHITECTURE, AND METHOD FOR LOGICAL SERVER AND OTHER NETWORK DEVICES IN A DYNAMICALLY CONFIGURABLE MULTI-SERVER NETWORK ENVIRONMENT**

of application No. 09/558,473, filed on Apr. 25, 2000. Non-provisional of provisional application No. 60/283,375, filed on Apr. 11, 2001. Non-provisional of provisional application No. 60/236,043, filed on Sep. 27, 2000. Non-provisional of provisional application No. 60/236,062, filed on Sep. 27, 2000.

(75) Inventor: **Henry T. Fung, San Jose, CA (US)**

Correspondence Address:  
**R. Michael Ananian**  
**FLEHR HOHBACH TEST**  
**ALBRITTON & HERBERT LLP**  
**Four Embarcadero Center, Suite 3400**  
**San Francisco, CA 94111 (US)**

**Publication Classification**

(51) **Int. Cl.<sup>7</sup> .....** **G06F 1/26; G06F 1/28; G06F 1/30**  
(52) **U.S. Cl. ....** **713/300**

(73) Assignee: **Amphus, Inc.**

(21) Appl. No.: **09/860,212**

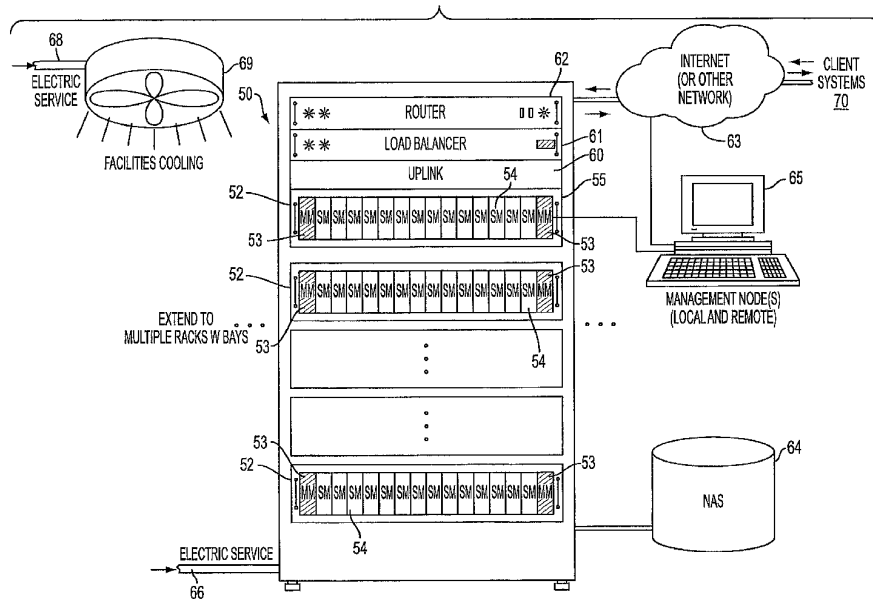
(22) Filed: **May 18, 2001**

(57) **ABSTRACT**

Network architecture, computer system and/or server, circuit, device, apparatus, method, and computer program and control mechanism for managing power consumption and workload in computer system and data and information servers. Further provides power and energy consumption and workload management and control systems and architectures for high-density and modular multi-server computer systems that maintain performance while conserving energy and method for power management and workload management. Dynamic server power management and optional dynamic workload management for multi-server environments is provided by aspects of the invention. Modular network devices and integrated server system, including modular servers, management units, switches and switching fabrics, modular power supplies and modular fans and a special backplane architecture are provided as well as dynamically reconfigurable multi-purpose modules and servers. Backplane architecture, structure, and method that has no active components and separate power supply lines and protection to provide high reliability in server environment.

**Related U.S. Application Data**

(63) Continuation of application No. 09/121,352, filed on Jul. 23, 1998, now Pat. No. 6,079,025. Continuation of application No. 08/767,821, filed on Dec. 17, 1996, now Pat. No. 5,892,959. Continuation of application No. 08/460,191, filed on Jun. 2, 1995, now abandoned. Continuation of application No. 08/285,169, filed on Aug. 3, 1994, now abandoned. Continuation of application No. 08/017,975, filed on Feb. 12, 1993, now Pat. No. 5,396,635. Continuation of application No. 07/908,533, filed on Jun. 29, 1992, now abandoned. Continuation of application No. 07/532,314, filed on Jun. 1, 1990, now abandoned. Continuation



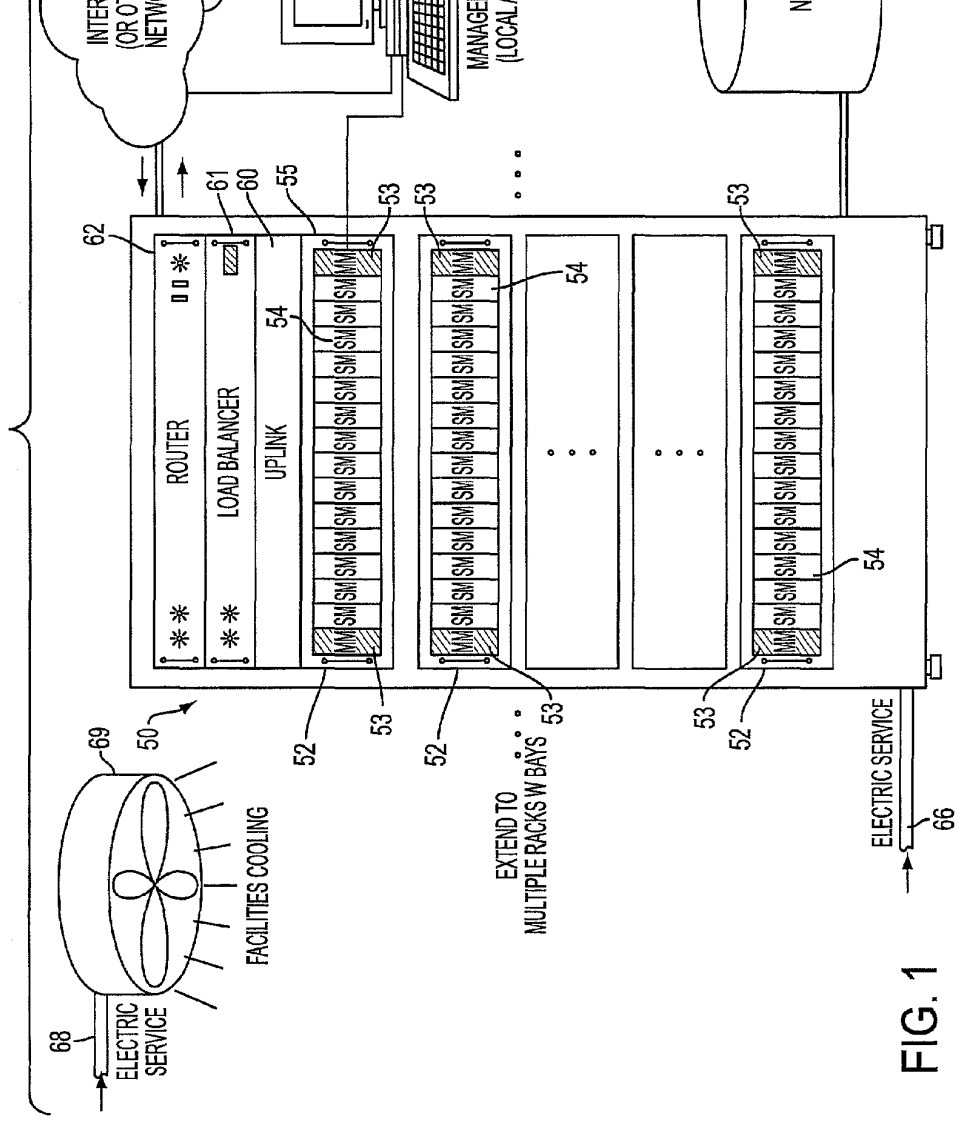


FIG. 1

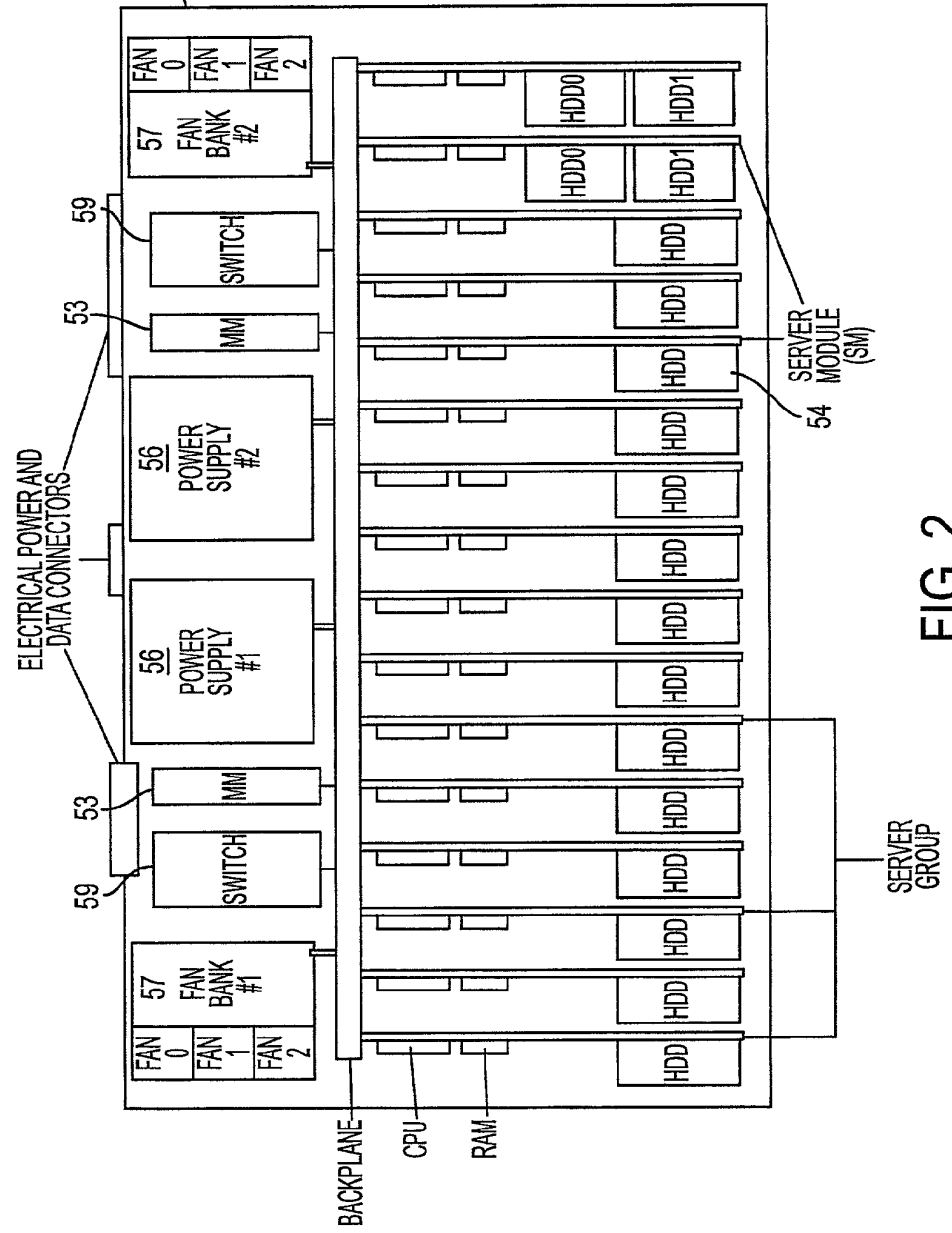


FIG. 2

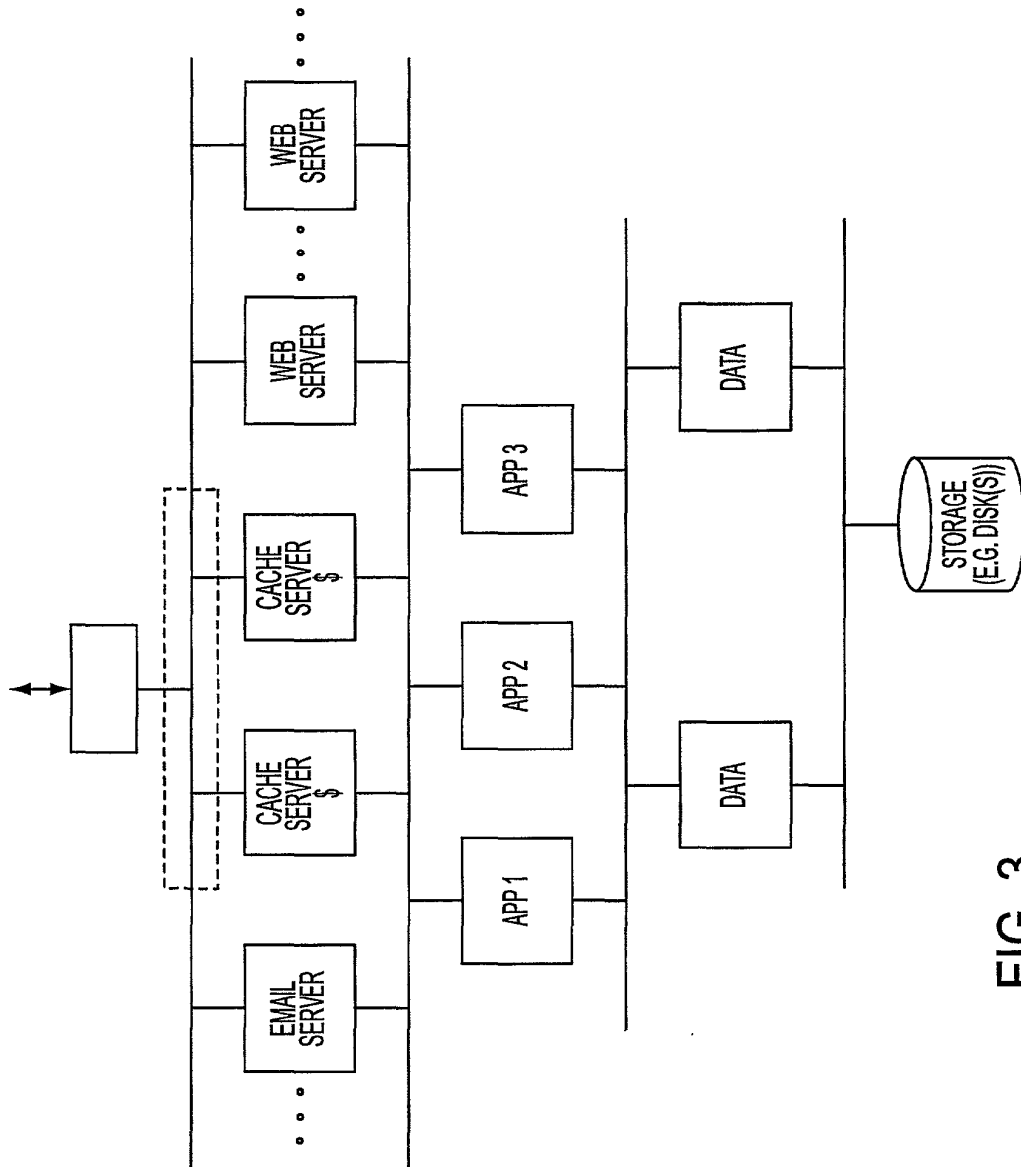


FIG. 3

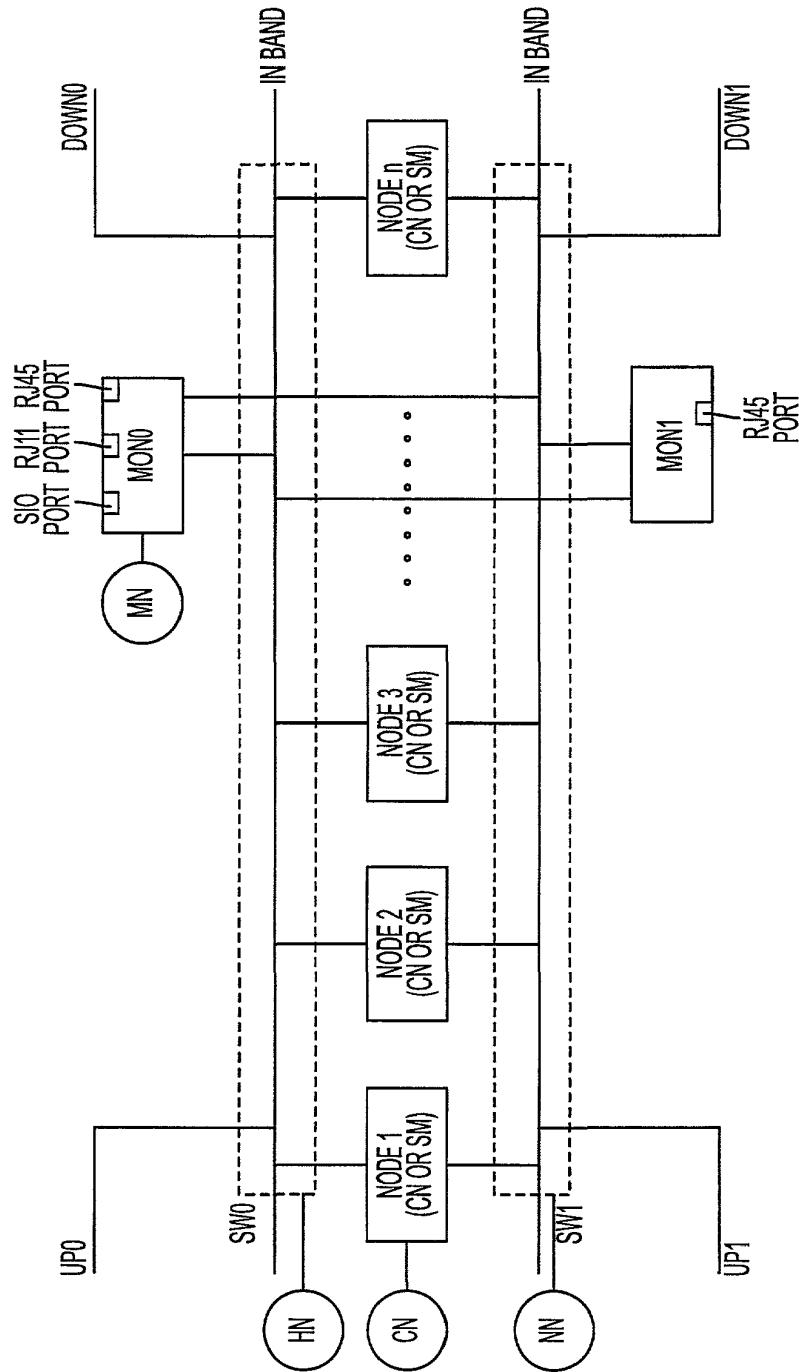


FIG. 4

# Explore Litigation Insights

Docket Alarm provides insights to develop a more informed litigation strategy and the peace of mind of knowing you're on top of things.

## Real-Time Litigation Alerts



Keep your litigation team up-to-date with **real-time alerts** and advanced team management tools built for the enterprise, all while greatly reducing PACER spend.

Our comprehensive service means we can handle Federal, State, and Administrative courts across the country.

## Advanced Docket Research



With over 230 million records, Docket Alarm's cloud-native docket research platform finds what other services can't. Coverage includes Federal, State, plus PTAB, TTAB, ITC and NLRB decisions, all in one place.

Identify arguments that have been successful in the past with full text, pinpoint searching. Link to case law cited within any court document via Fastcase.

## Analytics At Your Fingertips



Learn what happened the last time a particular judge, opposing counsel or company faced cases similar to yours.

Advanced out-of-the-box PTAB and TTAB analytics are always at your fingertips.

## API

Docket Alarm offers a powerful API (application programming interface) to developers that want to integrate case filings into their apps.

## LAW FIRMS

Build custom dashboards for your attorneys and clients with live data direct from the court.

Automate many repetitive legal tasks like conflict checks, document management, and marketing.

## FINANCIAL INSTITUTIONS

Litigation and bankruptcy checks for companies and debtors.

## E-DISCOVERY AND LEGAL VENDORS

Sync your system to PACER to automate legal marketing.