



(19) **United States**

(12) **Patent Application Publication** (10) **Pub. No.: US 2002/0147912 A1**

**Shmueli et al.**

(43) **Pub. Date:**

**Oct. 10, 2002**

(54) **PREFERENCE PORTABILITY FOR COMPUTING**

(52) **U.S. Cl.** ..... 713/182

(76) Inventors: **Shimon Shmueli**, Raleigh, NC (US);  
**Alex Lang**, Raleigh, NC (US); **Jean Billman**, Chapel Hill, NC (US)

(57) **ABSTRACT**

Correspondence Address:  
**WITHROW & TERRANOVA, P.L.L.C.**  
**P.O. BOX 1287**  
**CARY, NC 27512 (US)**

The present invention uses a portable memory device to directly or wirelessly interact with one or more host computing devices to provide a customized configuration for one or more aspects associated with a computing session. In particular, software on the portable device will automatically execute on the host computing device after the host computing device recognizes the presence of the portable device. The software provides instructions for the host computing device to launch a select program on the host computing device and provide a customized configuration for the program. The customized configuration is based on information stored on the portable device. As such, the portable device may automatically set preferred interface or program configurations personalized to the user. For example, the interface settings for a desktop, productivity, or browser application may be tailored as defined by information stored on the portable device. Other settings, such as bookmarks for a browser, may be stored on the portable device and made available to the program launched on the host computing device.

(21) Appl. No.: **09/802,691**

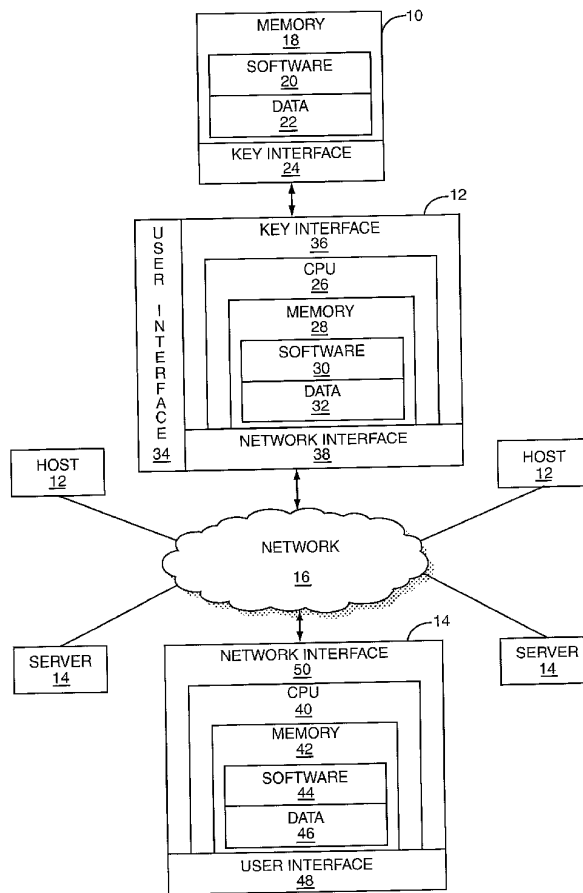
(22) Filed: **Mar. 9, 2001**

**Related U.S. Application Data**

(60) Provisional application No. 60/243,816, filed on Oct. 27, 2000.

**Publication Classification**

(51) **Int. Cl.**7 ..... **G06F 15/177; G06F 9/00**



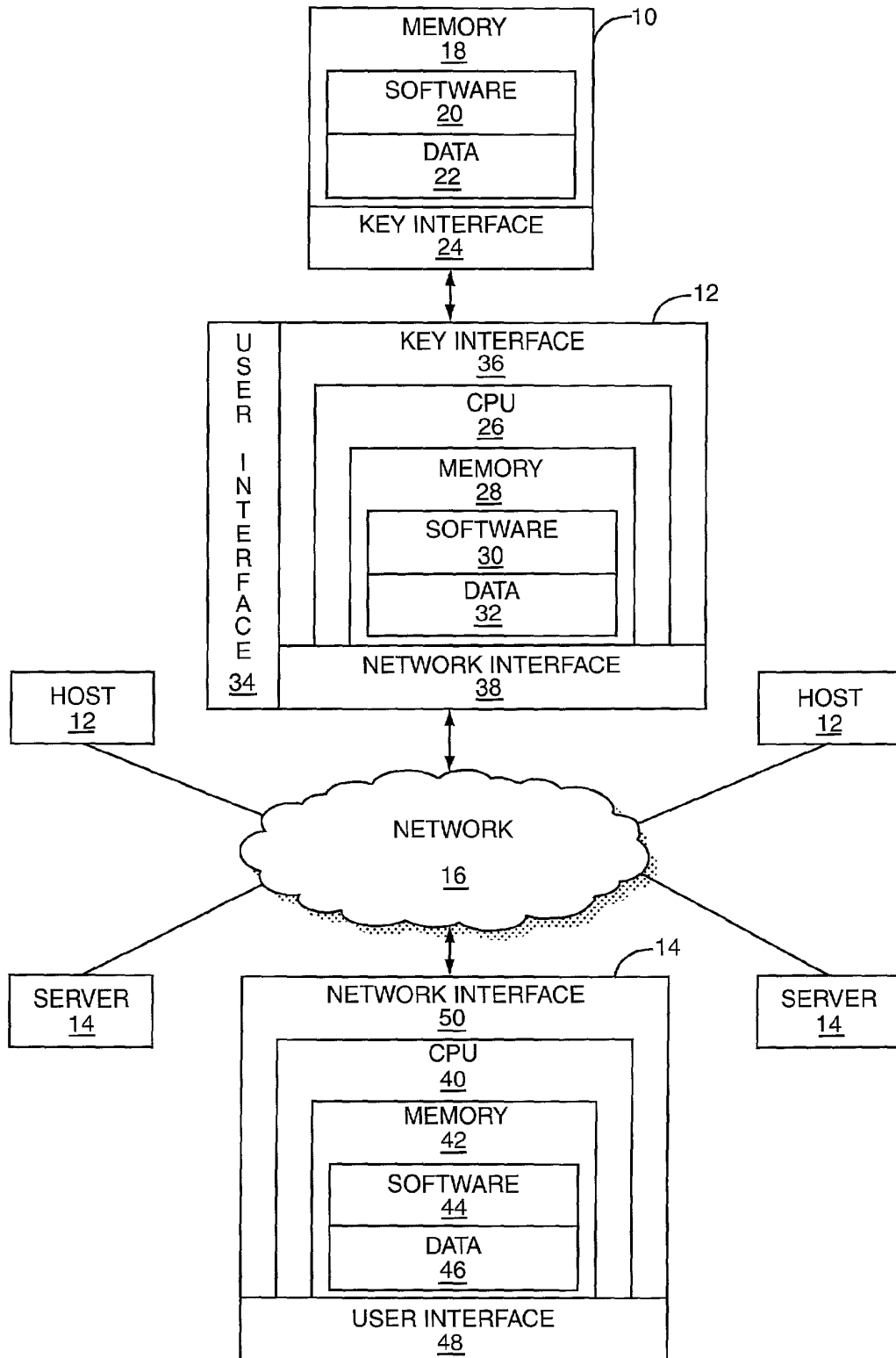
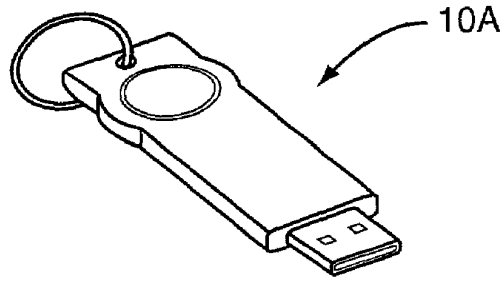
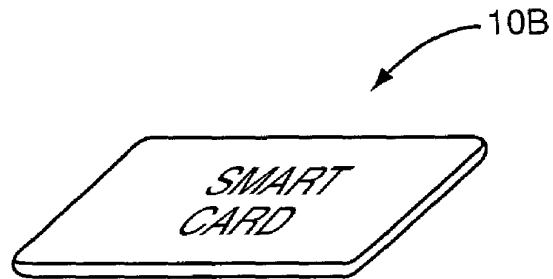


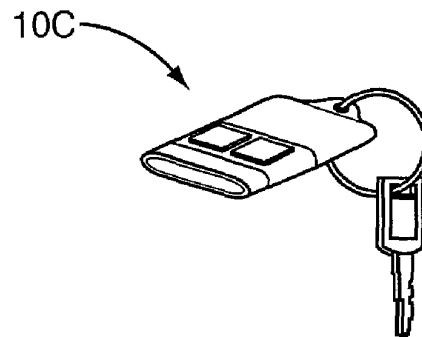
FIG. 1



**FIG. 2A**



**FIG. 2B**



**FIG. 2C**

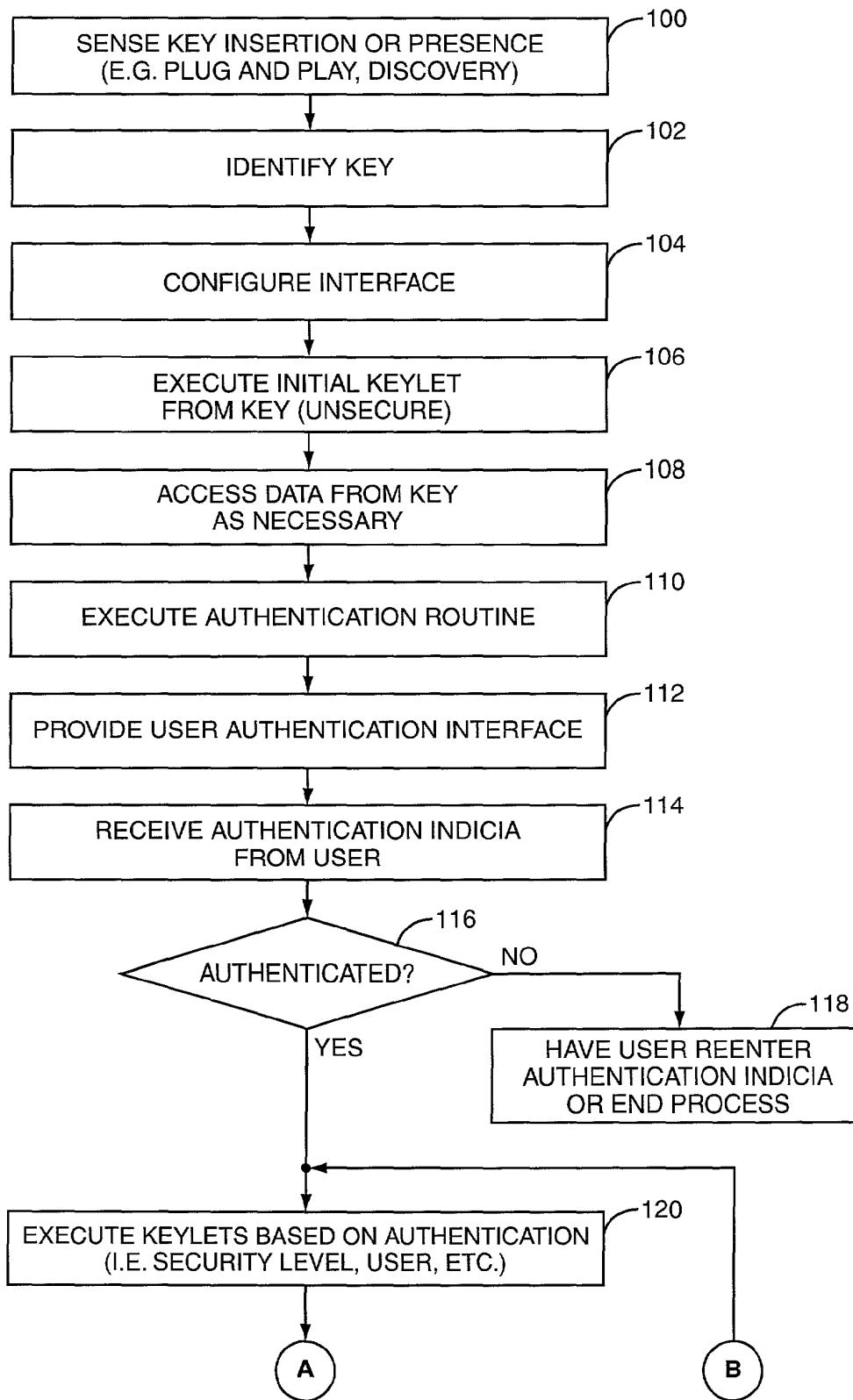


FIG. 3A

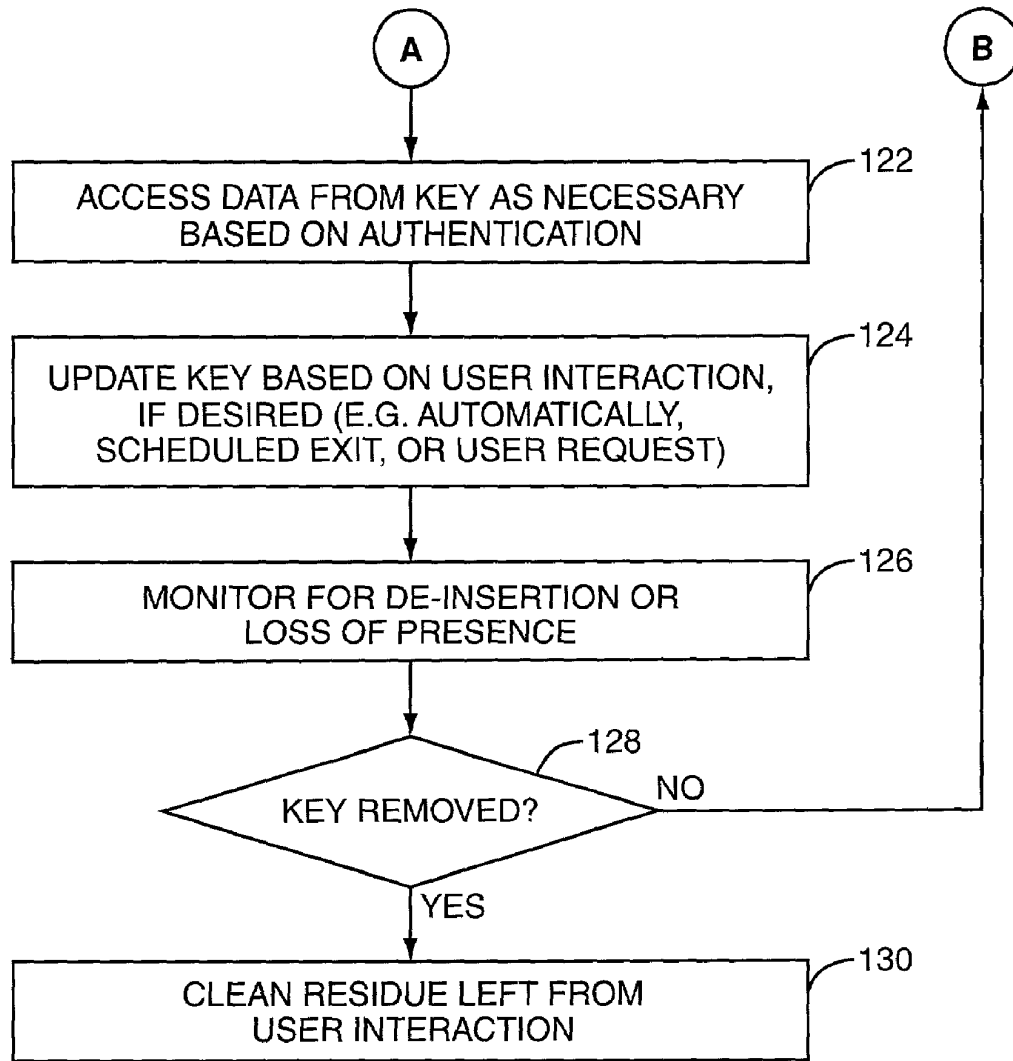


FIG. 3B

# Explore Litigation Insights

Docket Alarm provides insights to develop a more informed litigation strategy and the peace of mind of knowing you're on top of things.

## Real-Time Litigation Alerts



Keep your litigation team up-to-date with **real-time alerts** and advanced team management tools built for the enterprise, all while greatly reducing PACER spend.

Our comprehensive service means we can handle Federal, State, and Administrative courts across the country.

## Advanced Docket Research



With over 230 million records, Docket Alarm's cloud-native docket research platform finds what other services can't. Coverage includes Federal, State, plus PTAB, TTAB, ITC and NLRB decisions, all in one place.

Identify arguments that have been successful in the past with full text, pinpoint searching. Link to case law cited within any court document via Fastcase.

## Analytics At Your Fingertips



Learn what happened the last time a particular judge, opposing counsel or company faced cases similar to yours.

Advanced out-of-the-box PTAB and TTAB analytics are always at your fingertips.

## API

Docket Alarm offers a powerful API (application programming interface) to developers that want to integrate case filings into their apps.

## LAW FIRMS

Build custom dashboards for your attorneys and clients with live data direct from the court.

Automate many repetitive legal tasks like conflict checks, document management, and marketing.

## FINANCIAL INSTITUTIONS

Litigation and bankruptcy checks for companies and debtors.

## E-DISCOVERY AND LEGAL VENDORS

Sync your system to PACER to automate legal marketing.