



US006587680B1

(12) **United States Patent**
Ala-Laurila et al.

(10) **Patent No.:** **US 6,587,680 B1**
(45) **Date of Patent:** **Jul. 1, 2003**

(54) **TRANSFER OF SECURITY ASSOCIATION DURING A MOBILE TERMINAL HANDOVER**

(75) Inventors: **Juha Ala-Laurila**, Tampere (FI); **Harri Hansén**, Espoo (FI); **Juha Salvela**, Espoo (FI)

(73) Assignee: **Nokia Corporation**, Espoo (FI)

(*) Notice: Subject to any disclaimer, the term of this patent is extended or adjusted under 35 U.S.C. 154(b) by 0 days.

(21) Appl. No.: **09/447,761**

(22) Filed: **Nov. 23, 1999**

(51) **Int. Cl.**⁷ **H04M 1/66**; H04M 1/68; H04M 3/16

(52) **U.S. Cl.** **455/411**; 455/435; 455/437; 455/438; 380/248; 380/270; 380/272

(58) **Field of Search** 455/411, 435-439; 380/247, 248, 270-273; 370/331, 332

(56) **References Cited**

U.S. PATENT DOCUMENTS

5,204,902 A *	4/1993	Reeds, III et al.	380/23
5,237,612 A *	8/1993	Raith	380/23
5,598,459 A *	1/1997	Haartsen	379/58
5,778,075 A *	7/1998	Haartsen	380/49
6,014,085 A *	1/2000	Patel	340/825.34
6,026,293 A *	2/2000	Osborn	455/411
6,370,380 B1 *	4/2002	Norefors et al.	455/436

FOREIGN PATENT DOCUMENTS

EP	0 939 519 A1	9/1999
WO	WO 00/49827	8/2000

OTHER PUBLICATIONS

ETSI, "DTR/BRAN-00230002 V0.1.0, 99/03/29, High Performance Radio Access Local Area Network—Type 2—System Overview", Broadband Radio Access Networks, an ETSI Project, 29/03/99.

Korhonen, Markku "IPv6 Key Management", Tik-110.551 Internetworking Seminar, Department of Computer Science, Helsinki University of Technology.

* cited by examiner

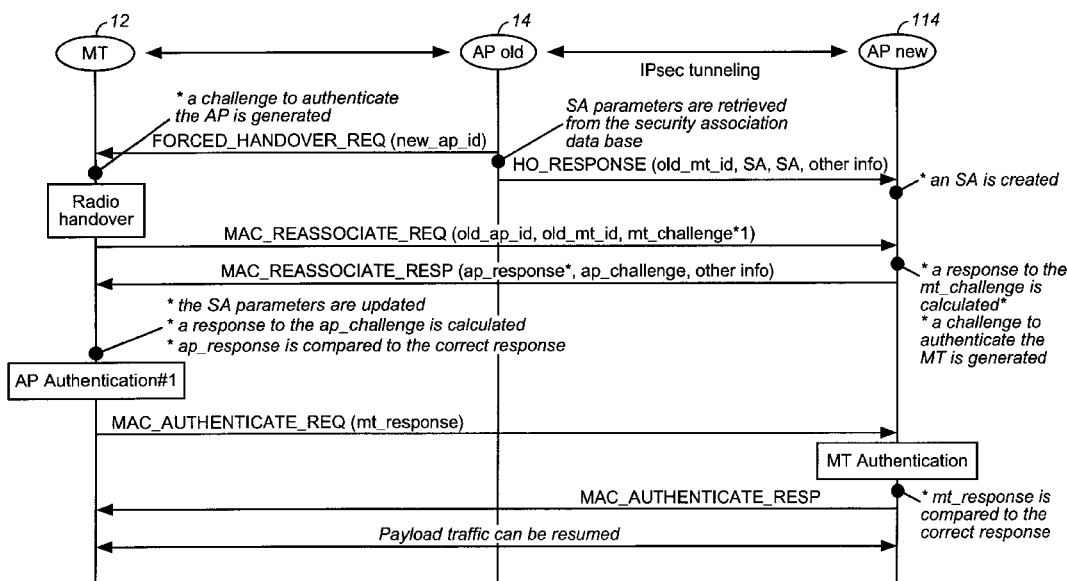
Primary Examiner—Thanh Cong Le

Assistant Examiner—Tuan Tran

(57) **ABSTRACT**

An existing security association is re-established when a communication handover event occurs in a radio communications system such as IEEE 802.11 or a HIPERLAN wherein the existing security association between a mobile terminal and a wireless communication network is maintained when the communication handover occurs within the network. Authentication during a handover event is achieved by a challenge/response procedure. In accordance with the challenge/response procedure each member of a communication pair that is made up of a new access point and the mobile terminal that is experiencing a handover to the new access point sends a challenge to the other member of the communication pair. Each member of the communication pair then calculates a response to its received challenge, and these responses are sent back to the other member of the communication pair. Each member of the communication pair then compares its received response to a correct response. When these comparisons are correct, payload communication begins between the second access point and the mobile terminal.

20 Claims, 11 Drawing Sheets



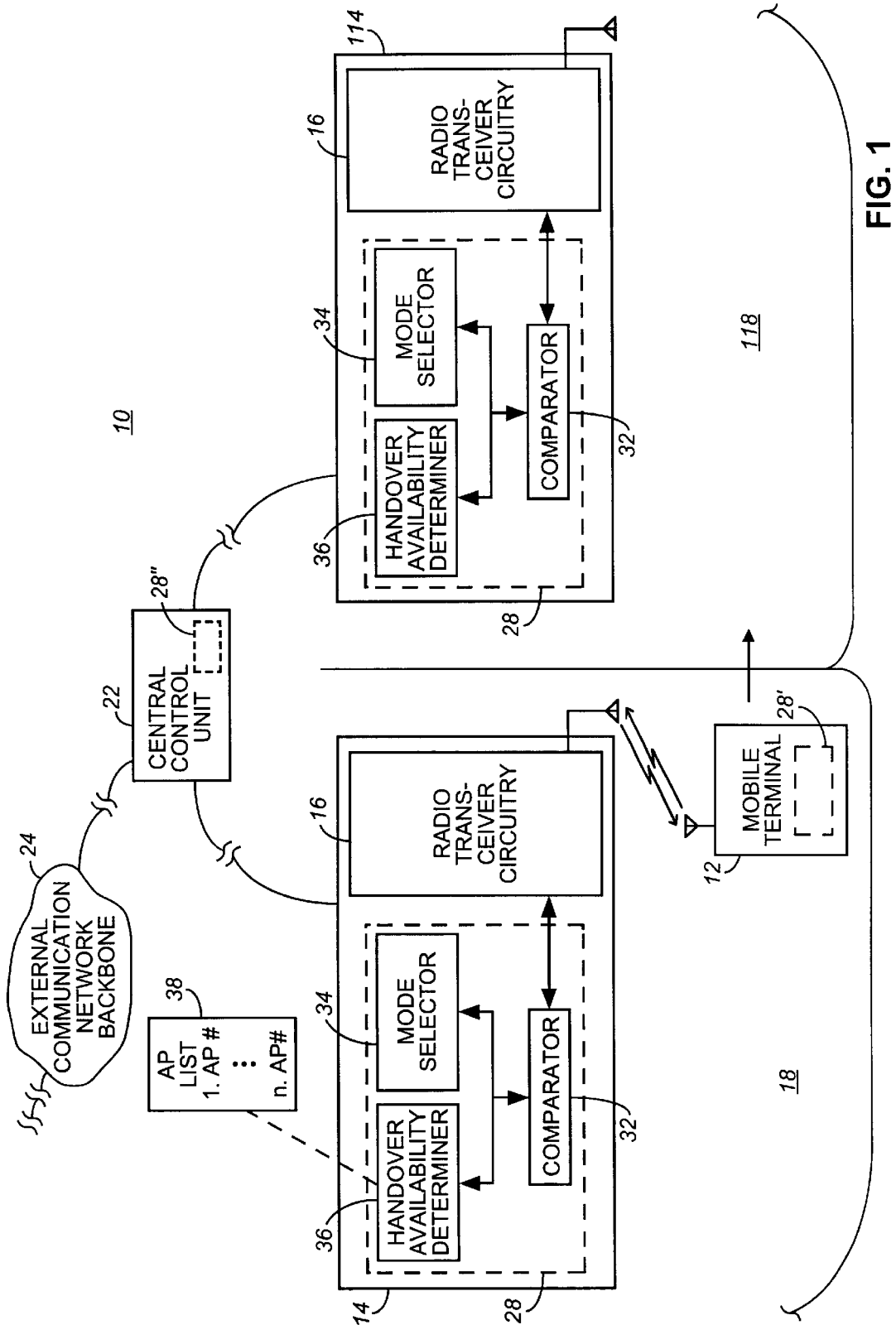


FIG. 1

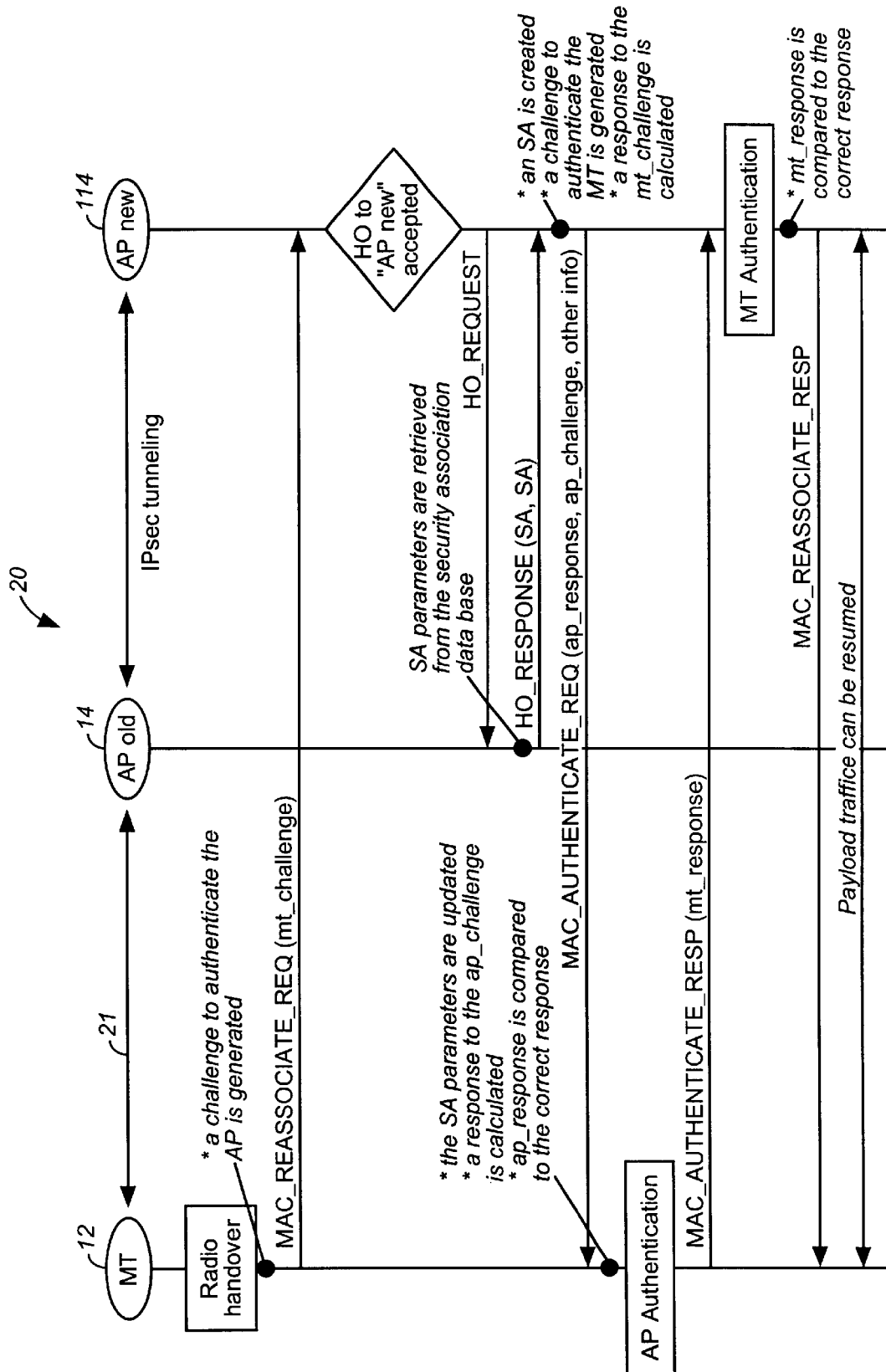


FIG. 2

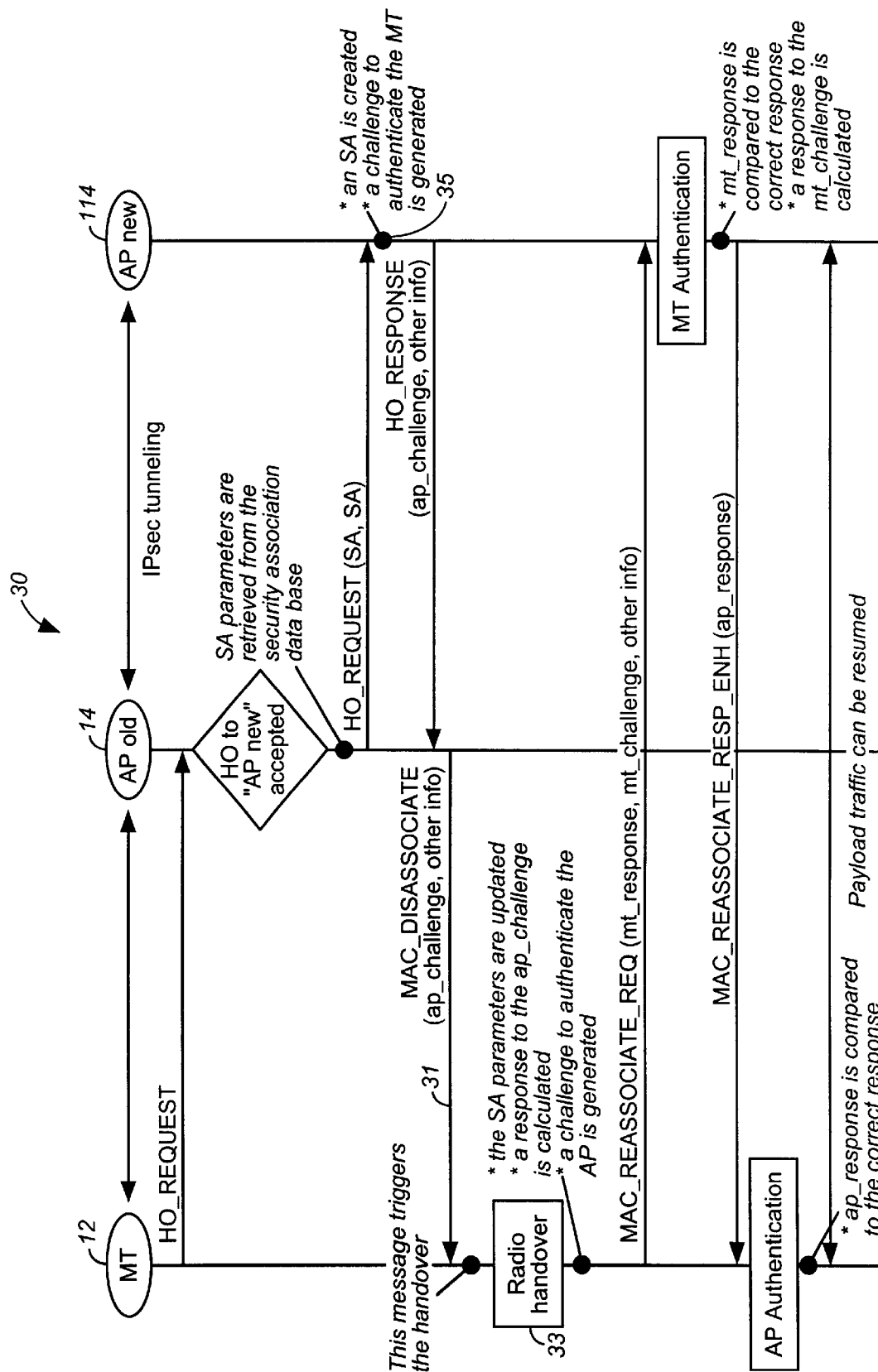


FIG. 3

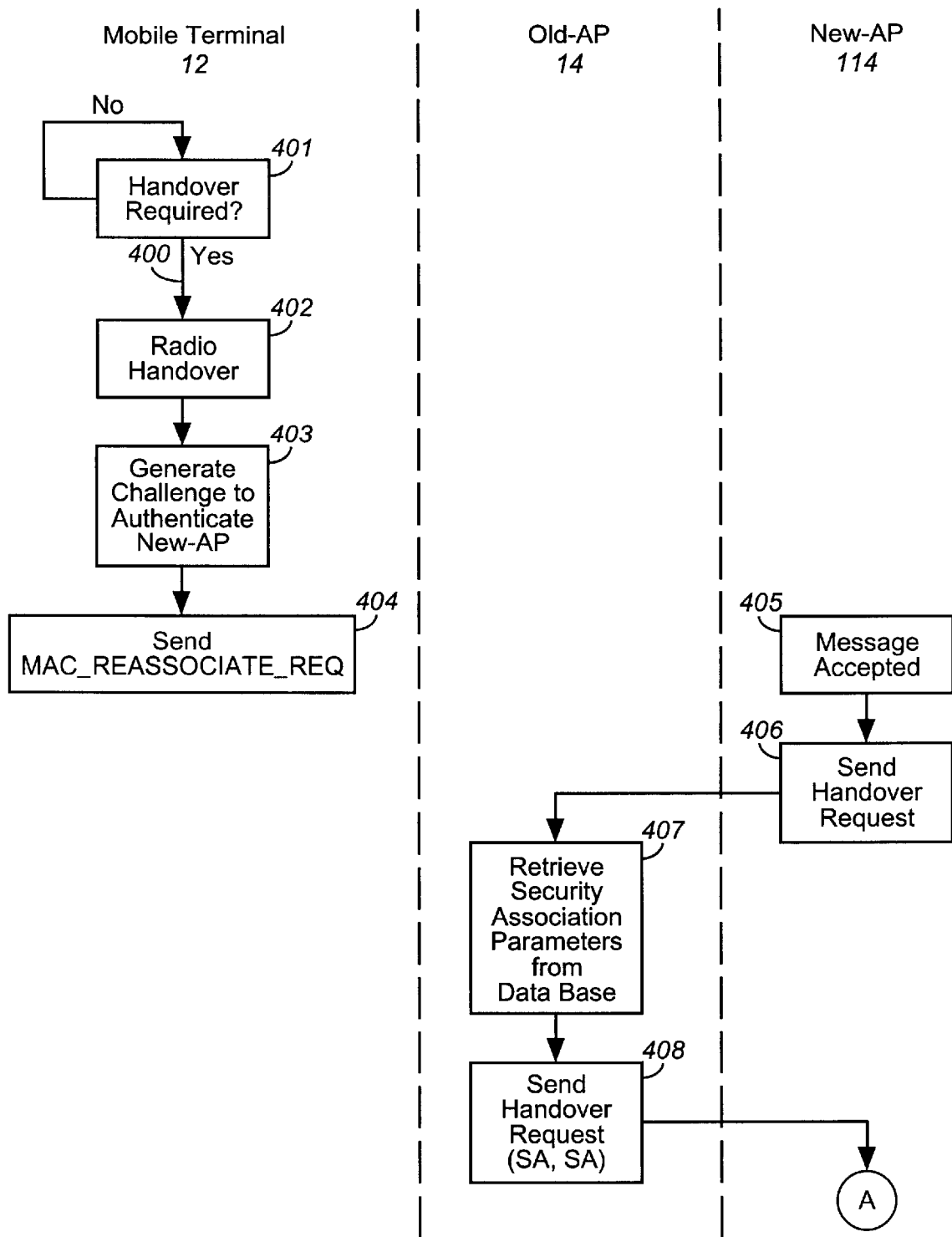


FIG. 4A

Explore Litigation Insights

Docket Alarm provides insights to develop a more informed litigation strategy and the peace of mind of knowing you're on top of things.

Real-Time Litigation Alerts



Keep your litigation team up-to-date with **real-time alerts** and advanced team management tools built for the enterprise, all while greatly reducing PACER spend.

Our comprehensive service means we can handle Federal, State, and Administrative courts across the country.

Advanced Docket Research



With over 230 million records, Docket Alarm's cloud-native docket research platform finds what other services can't. Coverage includes Federal, State, plus PTAB, TTAB, ITC and NLRB decisions, all in one place.

Identify arguments that have been successful in the past with full text, pinpoint searching. Link to case law cited within any court document via Fastcase.

Analytics At Your Fingertips



Learn what happened the last time a particular judge, opposing counsel or company faced cases similar to yours.

Advanced out-of-the-box PTAB and TTAB analytics are always at your fingertips.

API

Docket Alarm offers a powerful API (application programming interface) to developers that want to integrate case filings into their apps.

LAW FIRMS

Build custom dashboards for your attorneys and clients with live data direct from the court.

Automate many repetitive legal tasks like conflict checks, document management, and marketing.

FINANCIAL INSTITUTIONS

Litigation and bankruptcy checks for companies and debtors.

E-DISCOVERY AND LEGAL VENDORS

Sync your system to PACER to automate legal marketing.