



(19) **United States**

(12) **Patent Application Publication** (10) **Pub. No.: US 2007/0281716 A1**

Altman et al.

(43) **Pub. Date: Dec. 6, 2007**

(54) **MESSAGE TRANSMISSION SYSTEM FOR USERS OF LOCATION-AWARE MOBILE COMMUNICATION DEVICES IN A LOCAL AREA NETWORK**

(75) Inventors: **Samuel H. Altman**, Menlo Park, CA (US); **Nicholas T. Sivo**, Palo Alto, CA (US)

Correspondence Address:
COURTNEY STANIFORD & GREGORY LLP
P.O. BOX 9686
SAN JOSE, CA 95157

(73) Assignee: **Flipt, Inc**

(21) Appl. No.: **11/445,727**

(22) Filed: **Jun. 1, 2006**

Publication Classification

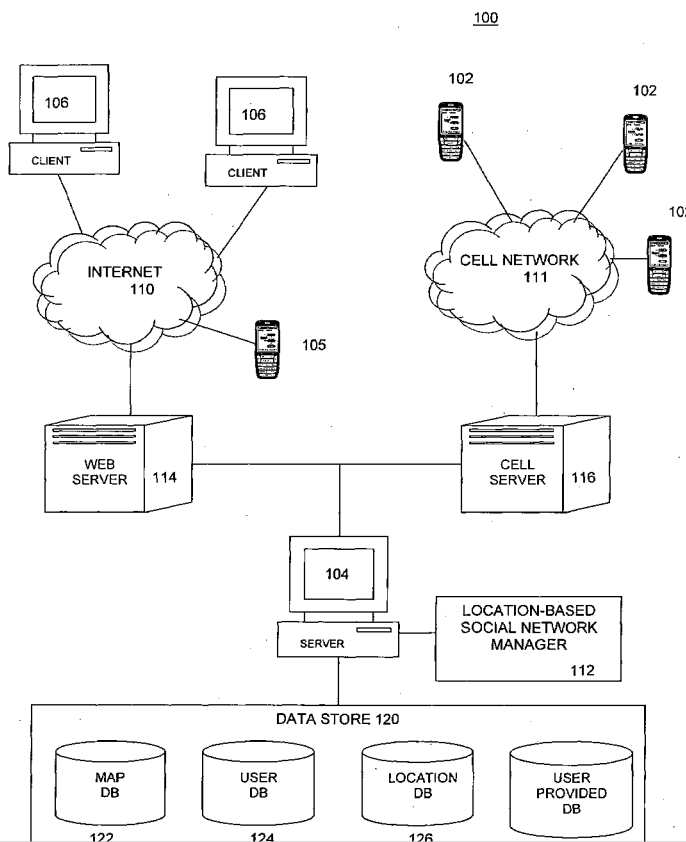
(51) **Int. Cl.**
H04Q 7/20 (2006.01)

(52) **U.S. Cl.** **455/466**

(57) **ABSTRACT**

Embodiments of a location-based social network manager process are described. The process is executed on a server

computer coupled to a plurality of mobile communication devices over a wireless network. Each mobile device is a location-aware mobile communication device. The process determines the geographic location of a mobile communication device operated by a user within an area, displays a map representation of the area around the mobile communication device on a graphical user interface of the mobile communication device, and superimposes on the map the respective locations of one or more other users of mobile communication devices coupled to the mobile communication device over the network. The process establishes communication links between the user and the plurality of acquaintances through respective location aware mobile communication devices through a network protocol. The user can create one or more groups of acquaintances based on one or more characteristics common to members of each group. The process facilitates the transmission of a user specified message or a pre-defined message to one or more acquaintances of the groups of acquaintances within a pre-defined distance to the user. The contents of the user specified message and pre-defined message is based on the characteristics of the group and the relative distance of the members to the user. The process can also be configured to automatically transmit a message to a user who is within a pre-defined distance to a point of interest within the displayed area.



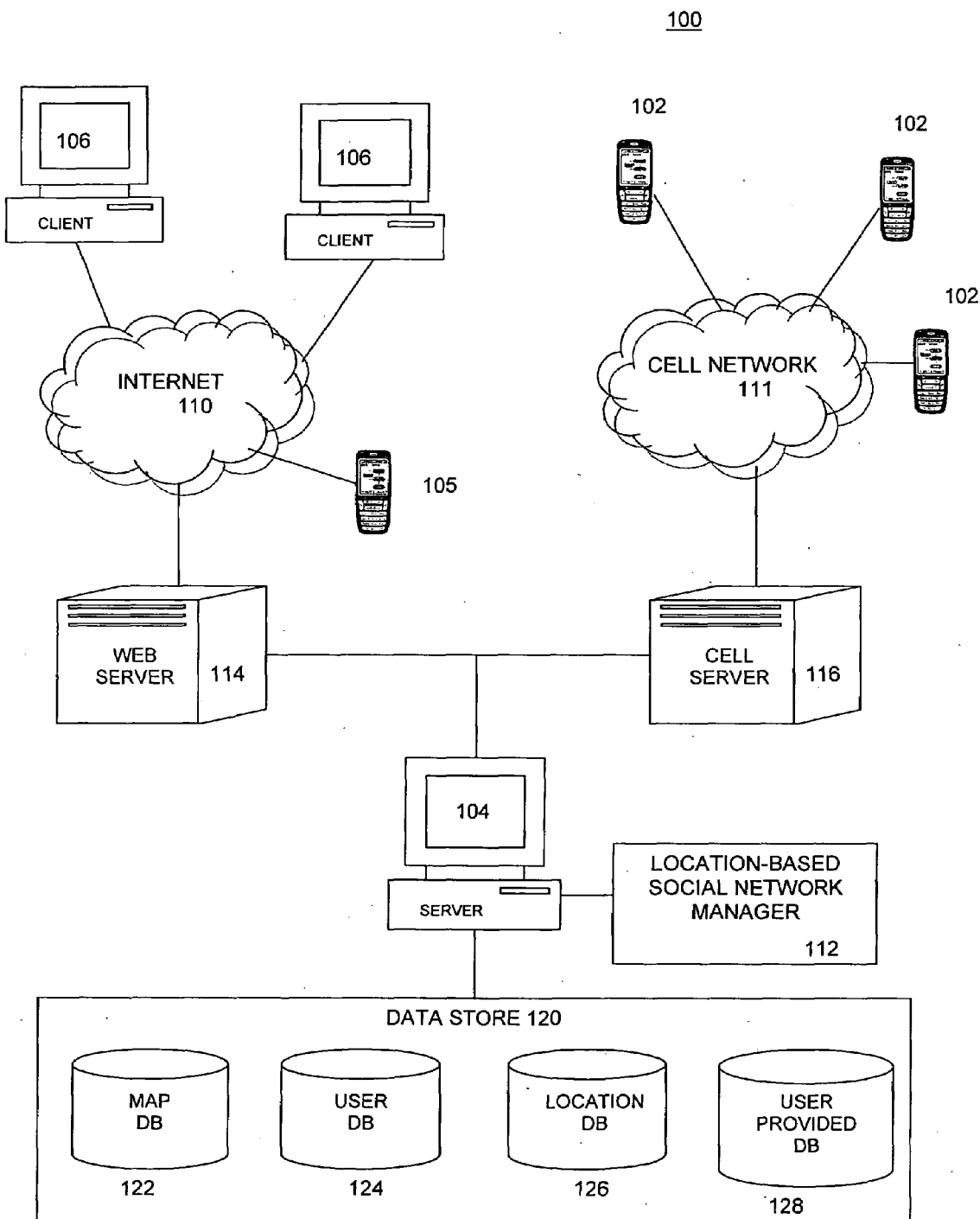


FIGURE 1

200

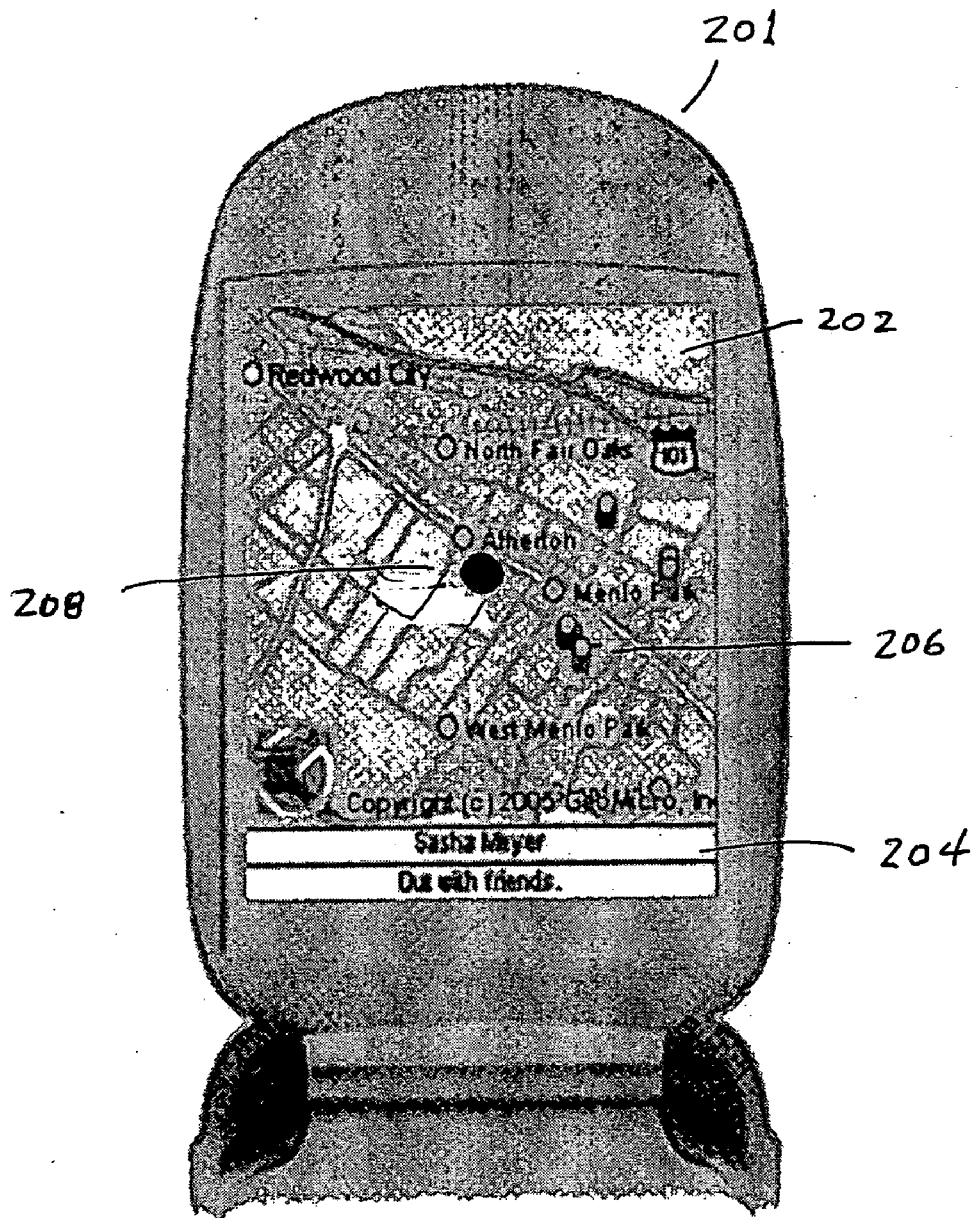


FIGURE 2A

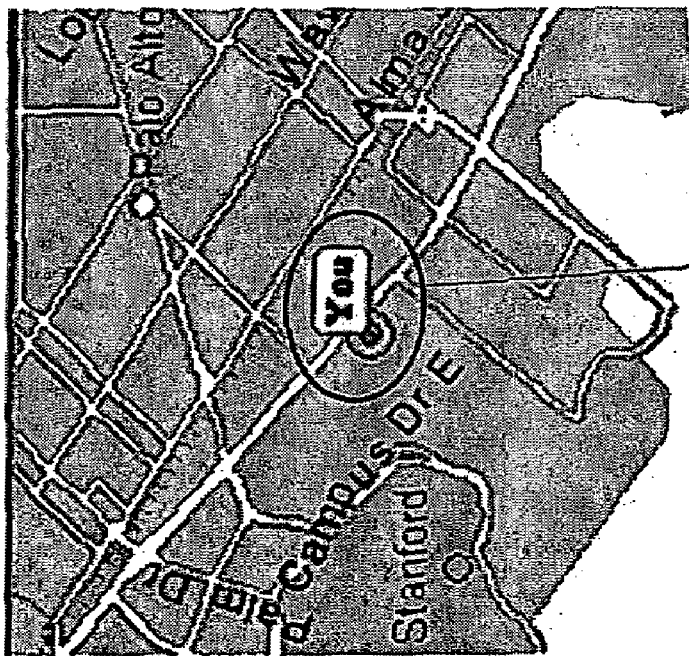
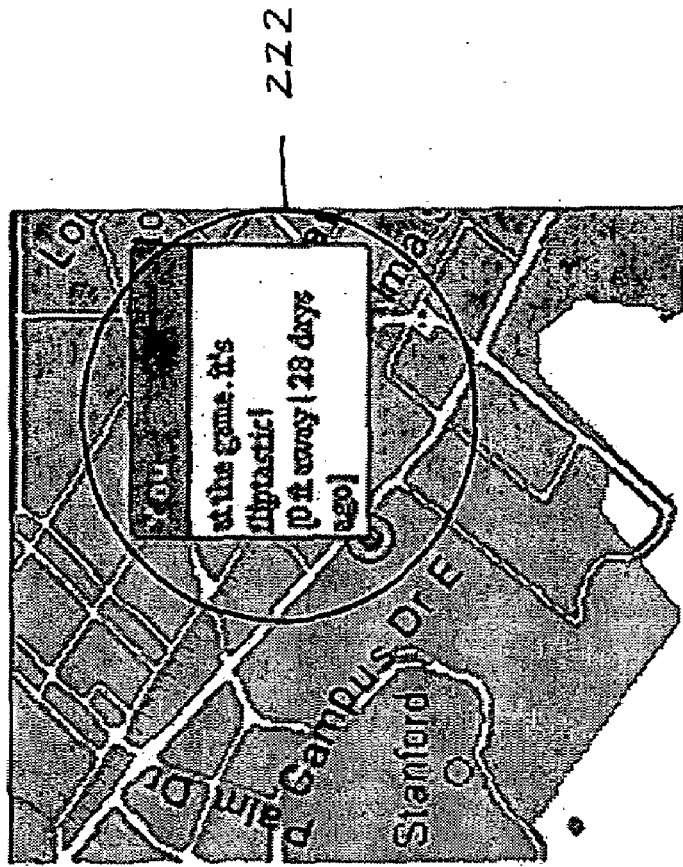


FIGURE 2B

300

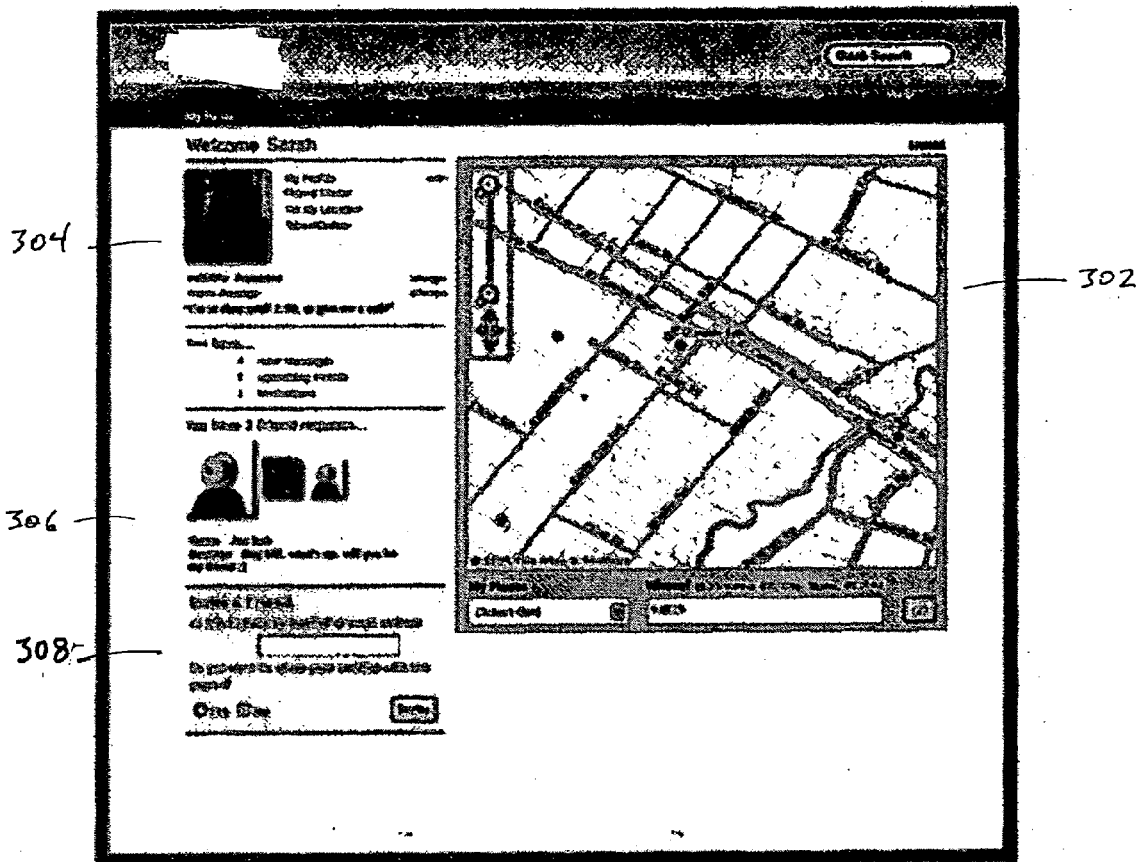


FIGURE 3

Explore Litigation Insights

Docket Alarm provides insights to develop a more informed litigation strategy and the peace of mind of knowing you're on top of things.

Real-Time Litigation Alerts



Keep your litigation team up-to-date with **real-time alerts** and advanced team management tools built for the enterprise, all while greatly reducing PACER spend.

Our comprehensive service means we can handle Federal, State, and Administrative courts across the country.

Advanced Docket Research



With over 230 million records, Docket Alarm's cloud-native docket research platform finds what other services can't. Coverage includes Federal, State, plus PTAB, TTAB, ITC and NLRB decisions, all in one place.

Identify arguments that have been successful in the past with full text, pinpoint searching. Link to case law cited within any court document via Fastcase.

Analytics At Your Fingertips



Learn what happened the last time a particular judge, opposing counsel or company faced cases similar to yours.

Advanced out-of-the-box PTAB and TTAB analytics are always at your fingertips.

API

Docket Alarm offers a powerful API (application programming interface) to developers that want to integrate case filings into their apps.

LAW FIRMS

Build custom dashboards for your attorneys and clients with live data direct from the court.

Automate many repetitive legal tasks like conflict checks, document management, and marketing.

FINANCIAL INSTITUTIONS

Litigation and bankruptcy checks for companies and debtors.

E-DISCOVERY AND LEGAL VENDORS

Sync your system to PACER to automate legal marketing.