



# Dictionary of Computing

▼ The most comprehensive computing dictionary ever published

▼ More than 18 000 entries

**DOCKET**  
**A L A R M**

Find authenticated court documents without watermarks at [docketalarm.com](http://docketalarm.com).

### **Limitation of Liability**

While the Editor and Publisher of this book have made reasonable efforts to ensure the accuracy and timeliness of the information contained herein, neither the Editor nor the Publisher shall have any liability with respect to loss or damage caused or alleged to be caused by reliance on any information contained herein.

Copyright © 1994 by International Business Machines Corporation. All rights reserved. Printed in the United States of America. Except as permitted under the United States Copyright Act of 1976, no part of this publication may be reproduced or distributed in any form or by any means, or stored in a data base or retrieval system, without the prior written permission of the publisher.

1 2 3 4 5 6 7 8 9 0 DOC/DOC 9 9 8 7 6 5 4 3

ISBN 0-07-031488-8 (HC)  
ISBN 0-07-031489-6 (PBK)

*The sponsoring editor for this book was Daniel A. Gonneau and the production supervisor was Thomas G. Kowalczyk.*

*Printed and bound by R. R. Donnelley & Sons Company.*

### **Tenth Edition (August 1993)**

This is a major revision of the *IBM Dictionary of Computing*, SC20-1699-8, which is made obsolete by this edition. Changes are made periodically to the information provided herein.

It is possible that this material may contain reference to, or information about, IBM products (machines and programs), programming, or services that are not announced in your country. Such references or information must not be construed to mean that IBM intends to announce such IBM products, programming, or services in your country. Comments may be addressed to IBM Corporation, Department E37/656, P. O. Box 12195, Research Triangle Park, NC 27709.

### **International Edition**

Copyright © 1994 by International Business Machines Corporation. Exclusive rights by McGraw-Hill, Inc. for manufacture and export. This book cannot be re-exported from the country to which it is consigned by McGraw-Hill. The International Edition is not available in North America.

When ordering this title, use ISBN 0-07-113383-6.

This book is printed on acid-free paper.

clicking a mouse button, and then disappears when the action is completed.

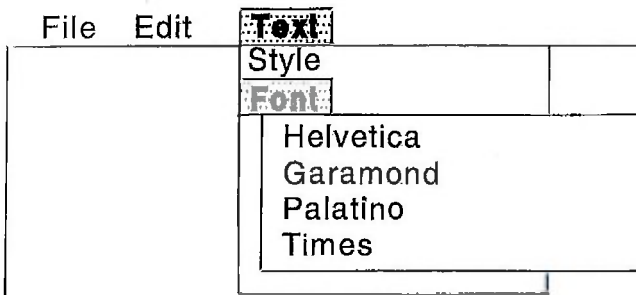


Figure 115. Pop-up Menu

**pop-up widget** In AIX Enhanced X-Windows, a window child of the root that is attached to its widget parent differently than the normal widget; a pop-up widget is not geometrically constrained by its parent widget.

**pop-up window** In SAA Advanced Common User Access architecture, a movable window, fixed in size, in which a user provides information required by an application so that it can continue to process a user request.

**port** (1) An access point for data entry or exit. (2) A connector on a device to which cables for other devices such as display stations and printers are attached. Synonymous with socket. See communication port, game port, I/O port, parallel port, serial port, terminal port. (3) A specific communications end point within a host. A port is identified by a port number. (4) The representation of a physical connection to the link hardware. A port is sometimes referred to as an adapter; however, there can be more than one port on an adapter. There may be one or more ports controlled by a single DLC process. (5) To make the programming changes necessary to allow a program that runs on one type of computer to run on another type of computer. (6) Deprecated term for adapter. (7) See delayed port, disabled port, protocol port, serial port, shared port, textport. (8) See also viewport.

**portability** (1) The capability of a program to be executed on various types of data processing systems without converting it to a different language and with little or no modification. (T) (2) The ability to transport equipment manually. (3) The ability to run a program on more than one computer without modifying it. (4) Synonymous with transportability. See data portability.

**portable computer** A microcomputer that can be hand carried for use in more than one location. (T)

**portable dictation machine** A dictation machine having a self-contained power supply and designed primarily for easy movement from one place to another. (I)

**portable typewriter** A typewriter designed primarily for easy movement from one place to another. It is usually supplied with a carrying case that also serves to protect the machine while it is being moved. (T)

**port address** In an ESCON Director, an address used to specify port connectivity parameters and to assign link addresses for attached channels and control units. See also link address.

**port address name** In an ESCON Director, a user-defined symbolic name of 24 characters or less that identifies a particular port.

**Port-A-Punch equipment** Portable punching equipment manufactured by IBM.

**port card** In an ESCON environment, a field-replaceable hardware component that provides the opto-mechanical attachment method for jumper cables and performs specific device-dependent logic functions.

**port designation** A 4-character identifier (such as LPT1 or COM1) assigned to a printer, plotter, or communications device so that the system has a unique way to refer to the resource.

**portfolio** In multimedia, a series of timed video stills, producing a "slide show" effect.

**port group** A group of ports identified by the common carrier with a single data terminal equipment (DTE) address. The network directs incoming calls to the first available port, using a sequential search technique.

**port information block (PIB)** In an ESCON Director, a data area that contains information relating to the connectivity of each available port.

**port number** (1) In an ESCON Director, a hexadecimal number that identifies a physical link connection point. This number is identical to its port address unless the service representative has reassigned the port associated with that address. (2) In TCP/IP, a 16-bit number used to communicate between TCP and a higher-level protocol or application. Some protocols, such as the File Transfer Protocol (FTP) and the Simple Mail Transfer Protocol (SMTP), use the same port number in all TCP/IP implementations. See well-known port.

**portrait** (1) The arrangement of text on a page so that it is oriented for normal reading when its length is