



(12) **United States Patent**  
**Grabelsky et al.**

(10) **Patent No.:** **US 8,539,552 B1**  
(45) **Date of Patent:** **Sep. 17, 2013**

(54) **SYSTEM AND METHOD FOR NETWORK  
BASED POLICY ENFORCEMENT OF  
INTELLIGENT-CLIENT FEATURES**

(75) Inventors: **David Grabelsky**, Skokie, IL (US);  
**Anoop Tripathi**, Lake Zurich, IL (US);  
**Michael Homeier**, Lake Forest, IL (US);  
**Guanglu Wang**, Buffalo Grove, IL (US)

(73) Assignee: **Hewlett-Packard Development  
Company, L.P.**, Houston, TX (US)

(\* ) Notice: Subject to any disclaimer, the term of this  
patent is extended or adjusted under 35  
U.S.C. 154(b) by 1045 days.

(21) Appl. No.: **10/671,375**

(22) Filed: **Sep. 25, 2003**

(51) **Int. Cl.**  
**H04L 29/06** (2006.01)

(52) **U.S. Cl.**  
USPC ..... **726/4; 726/21; 709/225**

(58) **Field of Classification Search**  
USPC ..... 713/166; 455/432.3, 433; 726/26;  
379/201.01; 370/338, 332  
See application file for complete search history.

(56) **References Cited**

U.S. PATENT DOCUMENTS

5,809,230	A *	9/1998	Pereira	726/35
6,446,206	B1 *	9/2002	Feldbaum	713/175
6,625,141	B1 *	9/2003	Glitho et al.	370/352
6,667,971	B1 *	12/2003	Modarressi et al.	370/352
6,678,735	B1 *	1/2004	Orton et al.	709/230
6,785,728	B1 *	8/2004	Schneider et al.	709/229
7,136,373	B2 *	11/2006	Ma	370/352
7,207,057	B1 *	4/2007	Rowe	725/144

2001/0024436	A1 *	9/2001	Barraclough et al.	370/352
2002/0075844	A1 *	6/2002	Hagen	370/351
2002/0116643	A1 *	8/2002	Raanan et al.	713/201
2002/0124112	A1 *	9/2002	Tso	709/246
2003/0081607	A1 *	5/2003	Kavanagh	370/392
2003/0093563	A1 *	5/2003	Young et al.	709/245
2003/0177363	A1 *	9/2003	Yokota et al.	713/176
2004/0029564	A1 *	2/2004	Hodge	455/411
2004/0057188	A1 *	3/2004	Phillips et al.	361/119
2004/0193906	A1 *	9/2004	Dar et al.	713/200

**OTHER PUBLICATIONS**

Request for Comments: 3303, "Middlebox communication architec-  
ture and framework," *MIDCOM Architecture and Framework*, p.  
1-34 Aug. 2002.

U.S. Appl. No. 10/243,642, Architecture and Method for Controlling  
Features and Services in Packet-Based Networks, p. 1-48, Sep. 2002.

\* cited by examiner

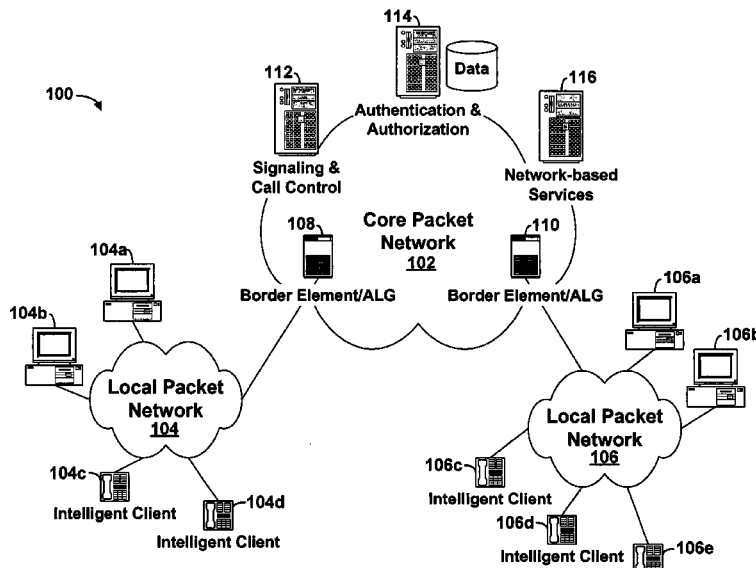
*Primary Examiner* — Gilberto Barron, Jr.

*Assistant Examiner* — Roderick Tolentino

(57) **ABSTRACT**

A system and method for network based policy enforcement of intelligent-client features is provided. An operator of an IP telephony and/or IP multimedia network may enforce authorization or privileges of intelligent end-user clients to utilize or invoke services in the network. A network policy enforcement point is maintained in the network by elements that are under control of the network operator. The network policy enforcement point controls access to, and invocation of, features and services that may otherwise be delivered to subscribers without the knowledge or authorization of the network. The network policy enforcement point receives messages, associates the message with a known service, makes a determination as to whether a beneficiary of the service is authorized to invoke the service, and then filters the messages based on the determination.

**25 Claims, 7 Drawing Sheets**



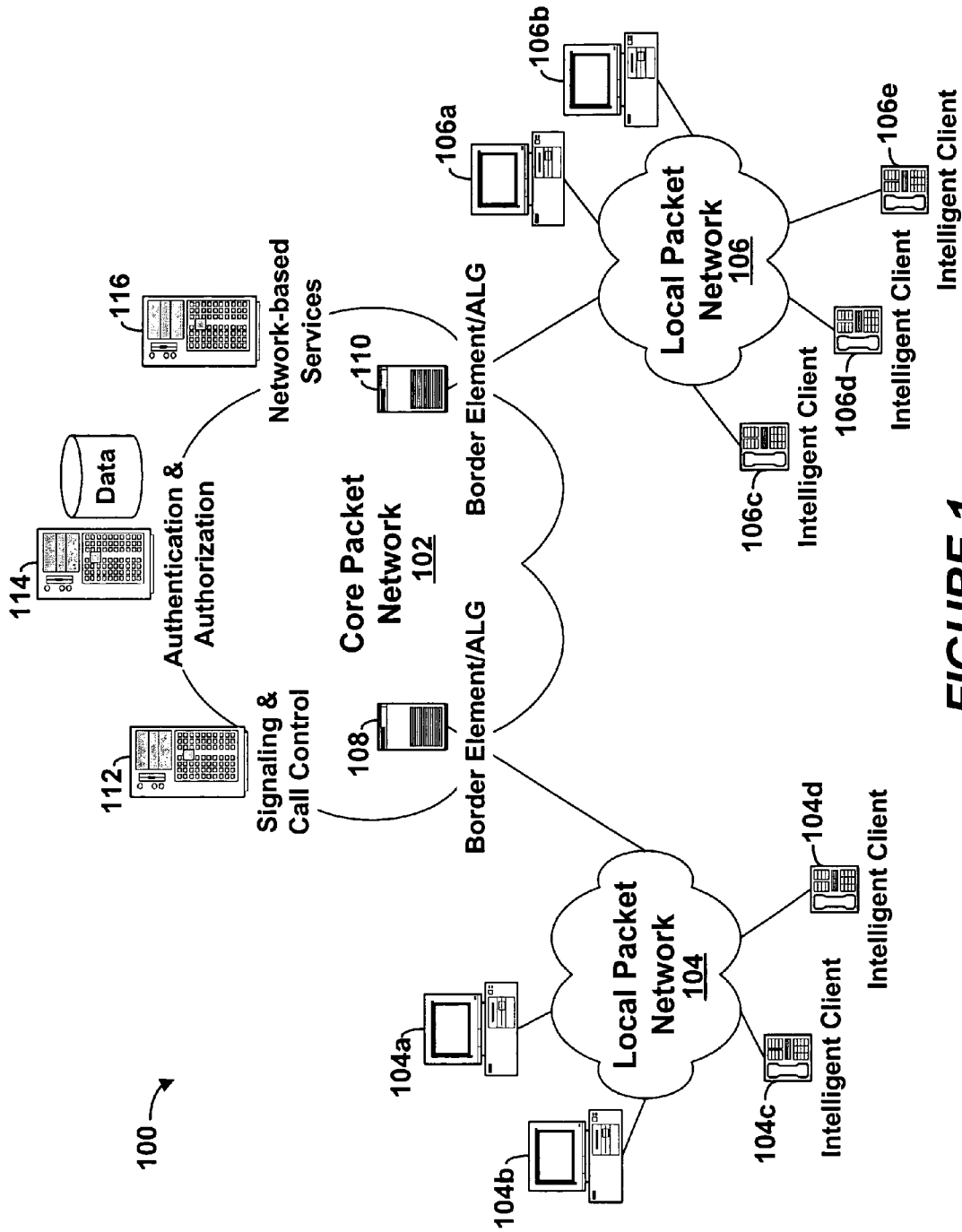


FIGURE 1

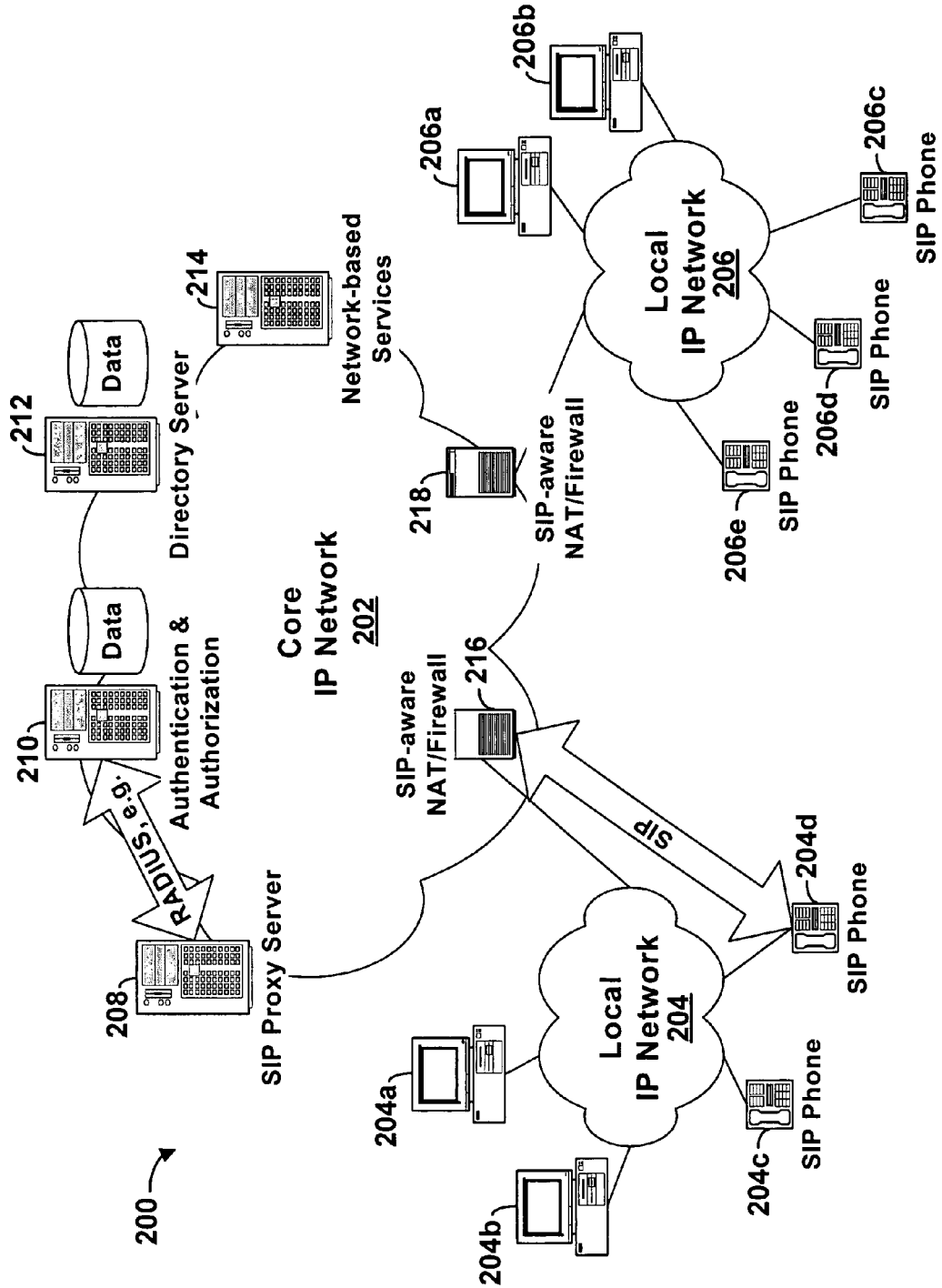
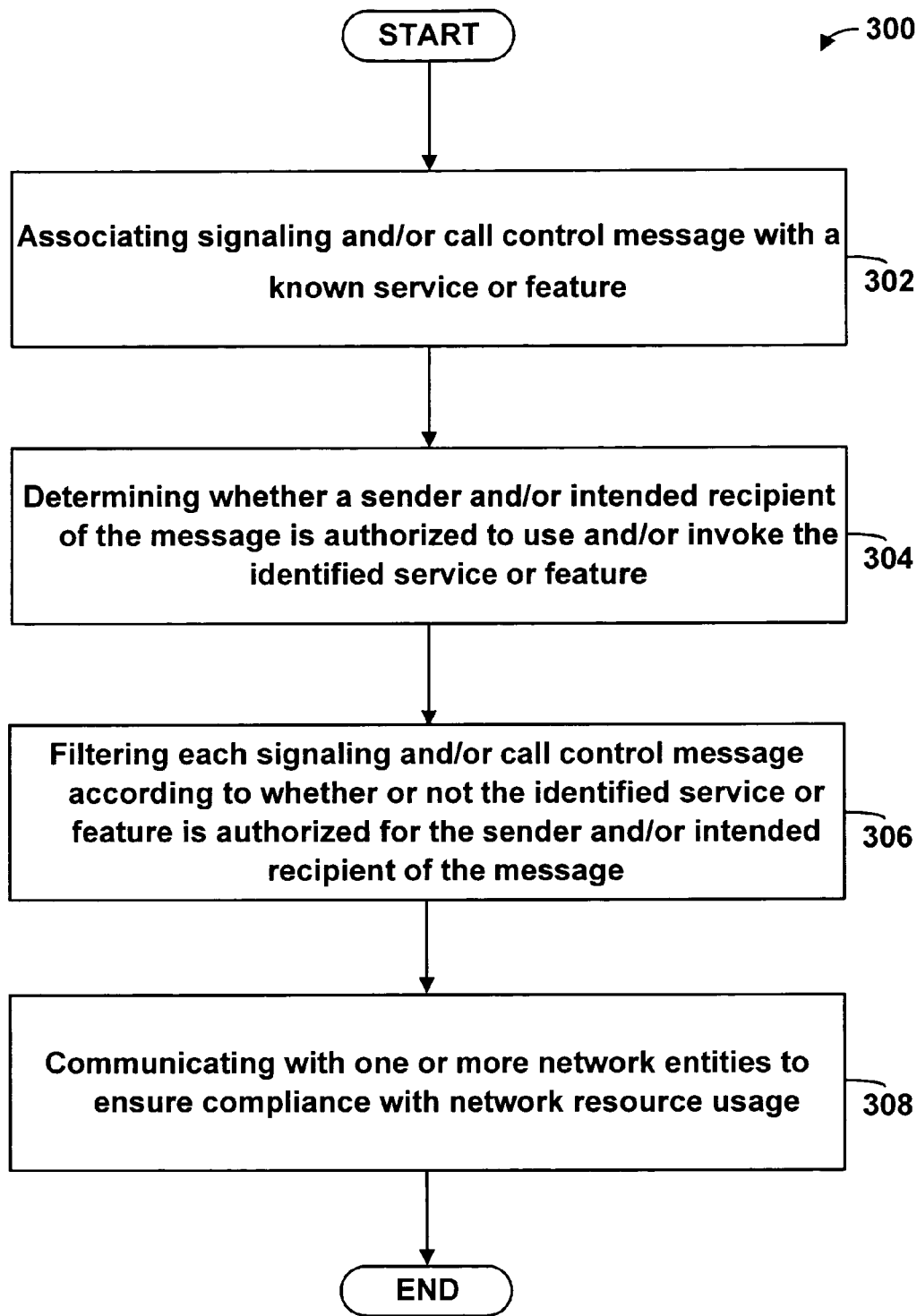
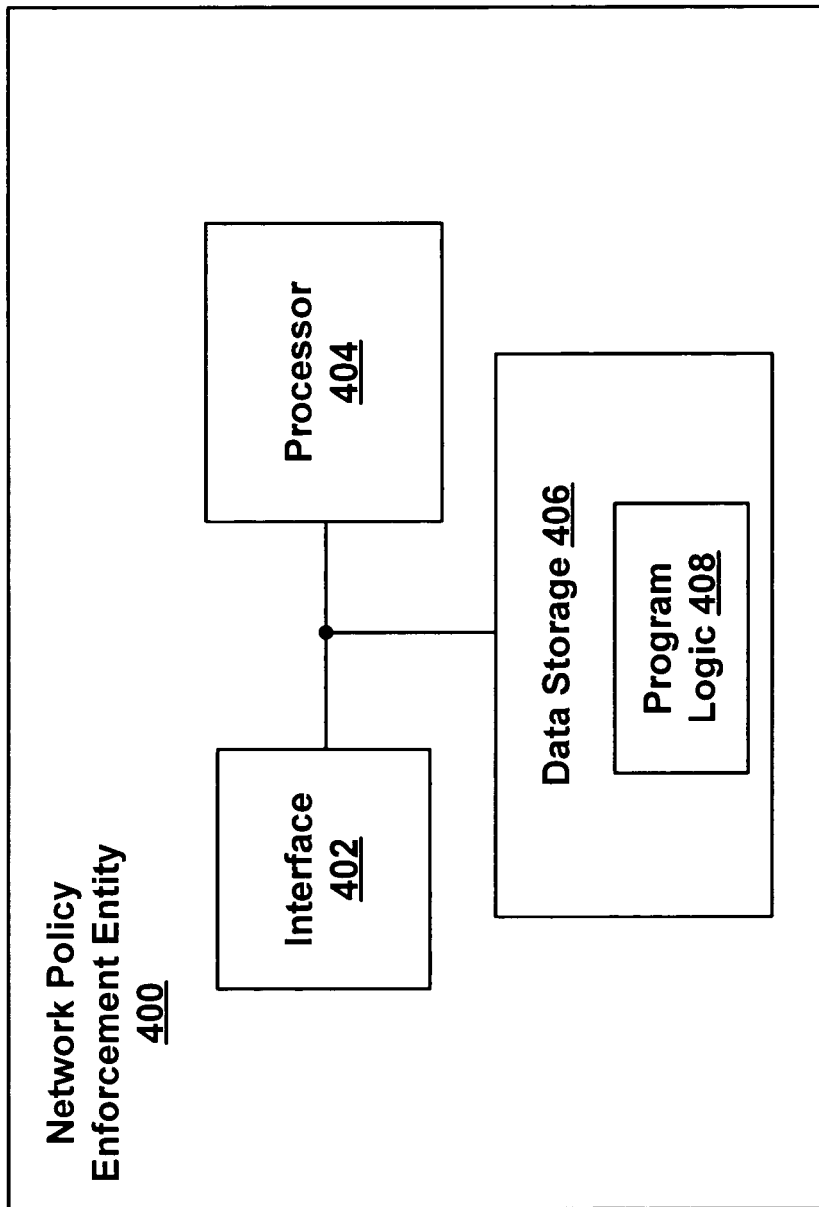


FIGURE 2



**FIGURE 3**



**FIGURE 4**

# Explore Litigation Insights

Docket Alarm provides insights to develop a more informed litigation strategy and the peace of mind of knowing you're on top of things.

## Real-Time Litigation Alerts



Keep your litigation team up-to-date with **real-time alerts** and advanced team management tools built for the enterprise, all while greatly reducing PACER spend.

Our comprehensive service means we can handle Federal, State, and Administrative courts across the country.

## Advanced Docket Research



With over 230 million records, Docket Alarm's cloud-native docket research platform finds what other services can't. Coverage includes Federal, State, plus PTAB, TTAB, ITC and NLRB decisions, all in one place.

Identify arguments that have been successful in the past with full text, pinpoint searching. Link to case law cited within any court document via Fastcase.

## Analytics At Your Fingertips



Learn what happened the last time a particular judge, opposing counsel or company faced cases similar to yours.

Advanced out-of-the-box PTAB and TTAB analytics are always at your fingertips.

## API

Docket Alarm offers a powerful API (application programming interface) to developers that want to integrate case filings into their apps.

## LAW FIRMS

Build custom dashboards for your attorneys and clients with live data direct from the court.

Automate many repetitive legal tasks like conflict checks, document management, and marketing.

## FINANCIAL INSTITUTIONS

Litigation and bankruptcy checks for companies and debtors.

## E-DISCOVERY AND LEGAL VENDORS

Sync your system to PACER to automate legal marketing.