

		Cmax ng/ml	SD ng/ml	rel SD %	AUC ng*h/ml	SD ng*h/ml	rel SD %	tmax h	range h
Wyse I	2mg NS (Table 11)	1.78	0.97	54.33	2.63	1.27	48.3	0.333	0.25-0.75
	0.4 mg im (Table 11)	1.05	0.35	33.62	1.67	0.36	21.7	0.167	
Wyse II	0.4 mg iv (Table 4)	3.87	2.72	70.28	1.67	0.54	32.3		0.08-1
	1 mg im (Table 4)	2.54	1.04	40.94	4.43	1.16	26.2		
	2mg NS (Table 4)	1.95	1.05	53.85	3.47	0.80	23.1		
747 Patent									
	4 mg	5.34	2.35	44.1	8.87	3.30	37.2	0.500	0.17-1.0
	0.4 mg im	0.91	0.29	31.5	1.83	0.42	23.0	0.420	0.08-2.0

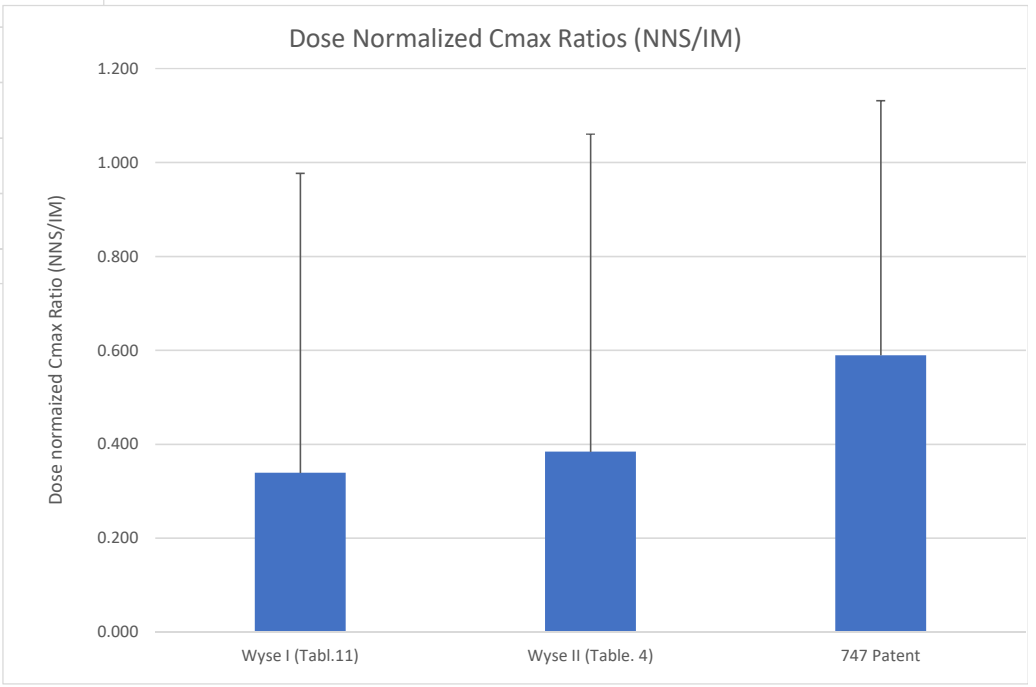
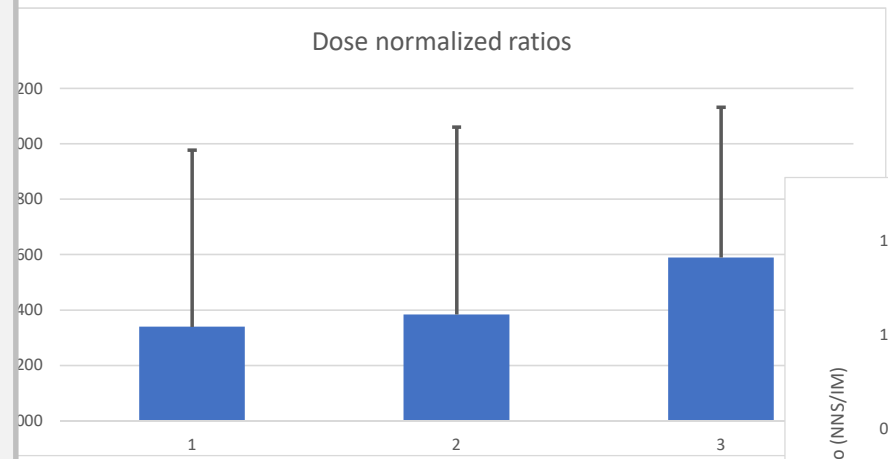
*Dose Normalized*

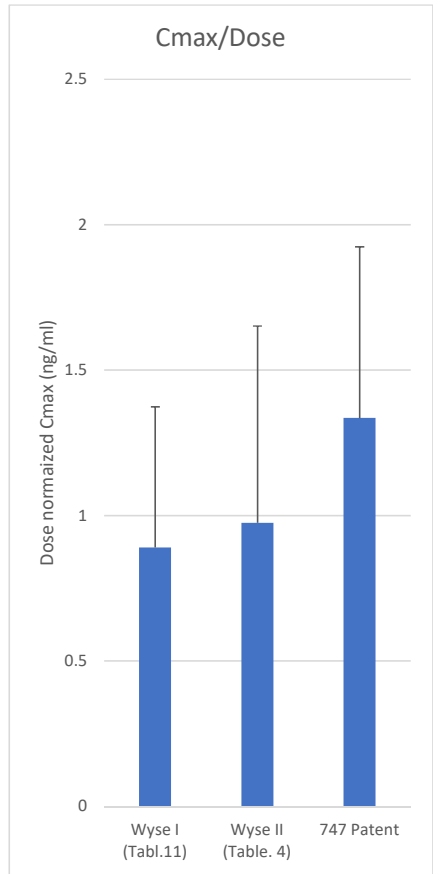
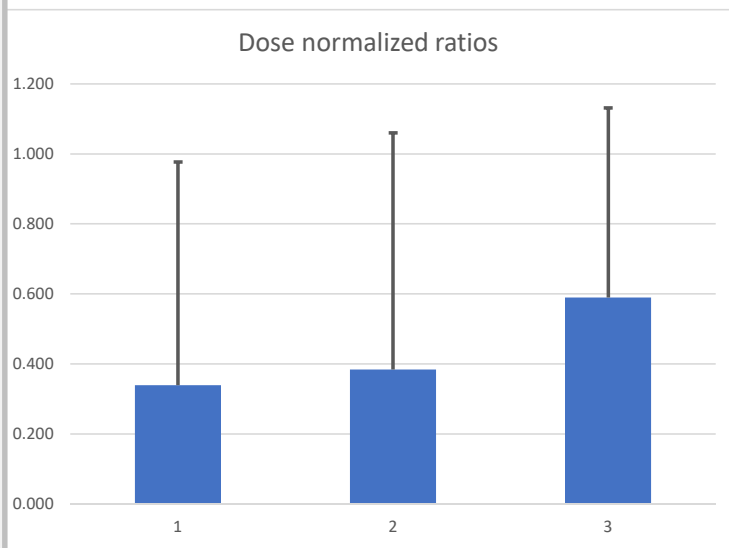
		Cmax/D ng/(ml*mg)	SD ng/(ml*mg)	rel SD %	AUC/D ng*h/(ml*mg)	SD ng*h/(ml*mg)	rel SD %
Wyse I (Table 11)	2mg NS	0.890	0.484	54.3	1.315	0.635	48.3
	0.4 mg im	2.625	0.883	33.6	4.175	0.908	21.7
	<b>ratio NS vs im</b>	0.339	0.639	118.6	0.315	0.530	79.7
Wyse II (Table 4)	0.4 mg iv (Table 4)	9.675	6.800	70.3	4.175	1.350	32.3
	1 mg im (Table 4)	2.540	1.040	40.9	4.430	1.160	26.2
	2mg NS (Table 4)	0.975	0.525	53.8	1.735	0.400	23.1
	<b>ratio NS vs im</b>	0.384	0.676	176.2	0.392	0.349	89.1
747 Patent							
	4 mg NS	1.335	0.589	44.1	2.218	0.825	37.2
	0.4 mg im	2.265	0.713	31.5	4.575	1.052	23.0
	<b>ratio NS vs im</b>	0.589	0.542	91.9	0.485	0.437	90.2
<b>ratio Wyse II vs im of 747</b>		0.430			0.379		

4.5  
9.71666667  
2.25

			Cmax/D
Wyse I (Tabl.	0.339	0.638	Wyse I (Tabl.: 0.89
Wyse II (Tabl	0.384	0.676	Wyse II (Tabl: 0.975
747 Patent	0.589	0.542	747 Patent   1.335
Wyse I (Tabl.:	31.49700599	52.95565649	
Wyse II (Tabl	39.16478555	34.88812513	Wyse Adapt
747 Patent	48.46994536	43.73602634	0.03 0.042
			0.08 0.082
			0.17 0.17

0.25	0.25
0.33	0.342
<b>0.42</b>	
0.5	0.51
0.75	0.75
1	1





0  
0.4835  
0.676  
0.589

