

		Cmax ng/ml	SD ng/ml	rel SD %	AUC ng*h/ml	SD ng*h/ml	rel SD %	tmax h	range h
Wyse I	2mg NS (Table 11)	1.78	0.97	54.33	2.63	1.27	48.3	0.333	0.25-0.75
	0.4 mg im (Table 11)	1.05	0.35	33.62	1.67	0.36	21.7	0.167	
Wyse II	0.4 mg iv (Table 4)	3.87	2.72	70.28	1.67	0.54	32.3		0.08-1
	1 mg im (Table 4)	2.54	1.04	40.94	4.43	1.16	26.2		
	2mg NS (Table 4)	1.95	1.05	53.85	3.47	0.80	23.1		
747 Patent	4 mg	5.34	2.35	44.1	8.87	3.30	37.2	0.500	0.17-1.0
	0.4 mg im	0.91	0.29	31.5	1.83	0.42	23.0	0.420	0.08-2.0

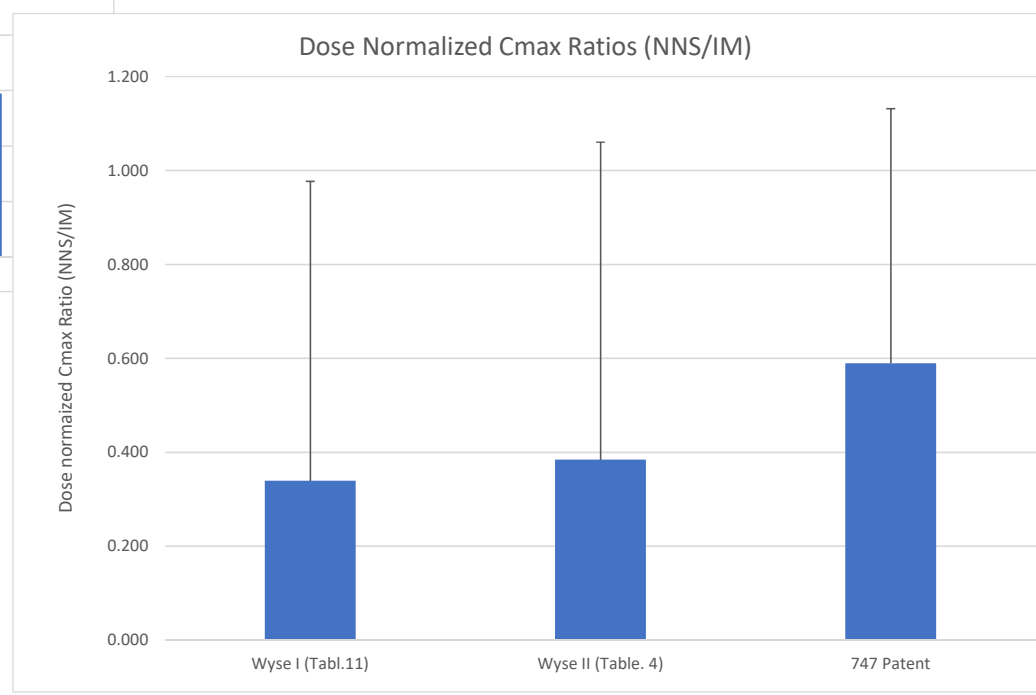
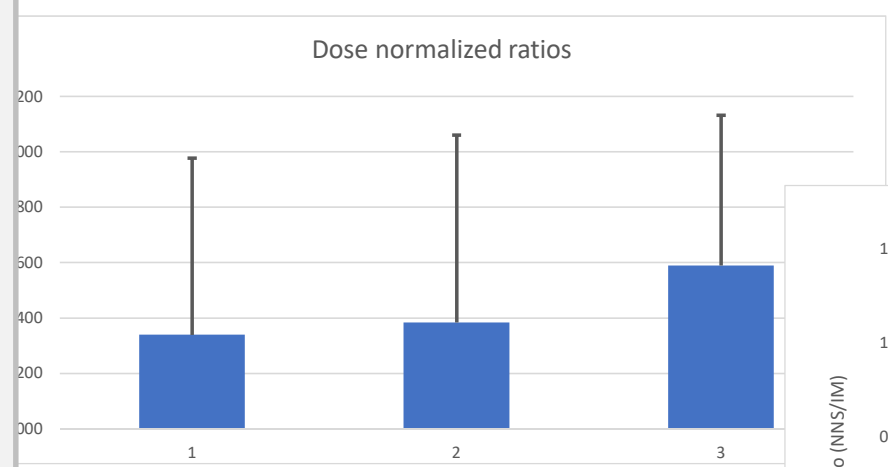
Dose Normalized

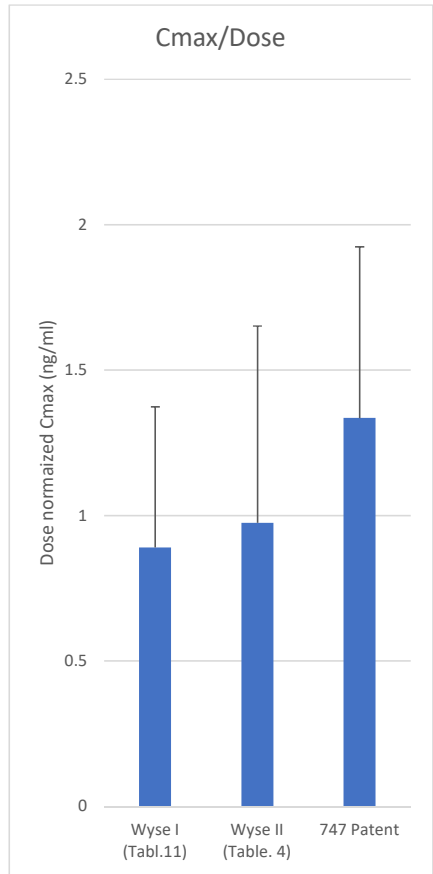
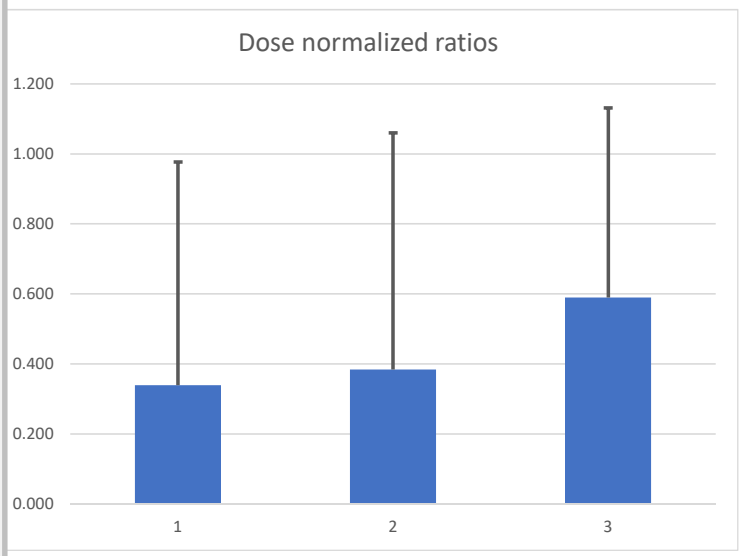
		Cmax/D ng/(ml*mg)	SD ng/(ml*mg)	rel SD %	AUC/D ng*h/(ml*mg)	SD ng*h/(ml*mg)	rel SD %
Wyse I (Table 11)	2mg NS	0.890	0.484	54.3	1.315	0.635	48.3
	0.4 mg im	2.625	0.883	33.6	4.175	0.908	21.7
	ratio NS vs im	0.339	0.639	118.6	0.315	0.530	79.7
Wyse II (Table 4)	0.4 mg iv (Table 4)	9.675	6.800	70.3	4.175	1.350	32.3
	1 mg im (Table 4)	2.540	1.040	40.9	4.430	1.160	26.2
	2mg NS (Table 4)	0.975	0.525	53.8	1.735	0.400	23.1
	ratio NS vs im	0.384	0.676	176.2	0.392	0.349	89.1
747 Patent	4 mg NS	1.335	0.589	44.1	2.218	0.825	37.2
	0.4 mg im	2.265	0.713	31.5	4.575	1.052	23.0
	ratio NS vs im	0.589	0.542	91.9	0.485	0.437	90.2
ratio Wyse II vs im of 747		0.430			0.379		

4.5
9.71666667
2.25

		Cmax/D	
Wyse I (Tabl.	0.339	0.638	0.89
Wyse II (Tabl	0.384	0.676	0.975
747 Patent	0.589	0.542	1.335
Wyse I (Tabl.:	31.49700599	52.95565649	
Wyse II (Tabl	39.16478555	34.88812513	
747 Patent	48.46994536	43.73602634	
Wyse	0.03	0.042	
Adapt	0.08	0.082	
	0.17	0.17	

0.25	0.25
0.33	0.342
0.42	
0.5	0.51
0.75	0.75
1	1





0
0.4835
0.676
0.589

