



US 20090083850A1

(19) **United States**

(12) **Patent Application Publication**

**Fadell et al.**

(10) **Pub. No.: US 2009/0083850 A1**

(43) **Pub. Date: Mar. 26, 2009**

(54) **EMBEDDED AUTHENTICATION SYSTEMS  
IN AN ELECTRONIC DEVICE**

**Related U.S. Application Data**

(60) Provisional application No. 60/995,200, filed on Sep. 24, 2007.

(75) Inventors: **Anthony Fadell**, Portola Valley, CA (US); **Andrew Hodge**, Palo Alto, CA (US); **Stephan Schell**, Cupertino, CA (US); **Ruben Caballero**, San Jose, CA (US); **Jesse Lee Dorogusker**, Los Altos, CA (US); **Stephen Zadesky**, Portola Valley, CA (US); **Emery Sanford**, San Francisco, CA (US)

**Publication Classification**

(51) **Int. Cl.**  
**H04L 9/32** (2006.01)  
(52) **U.S. Cl.** ..... **726/19; 726/16; 726/17**  
(57) **ABSTRACT**

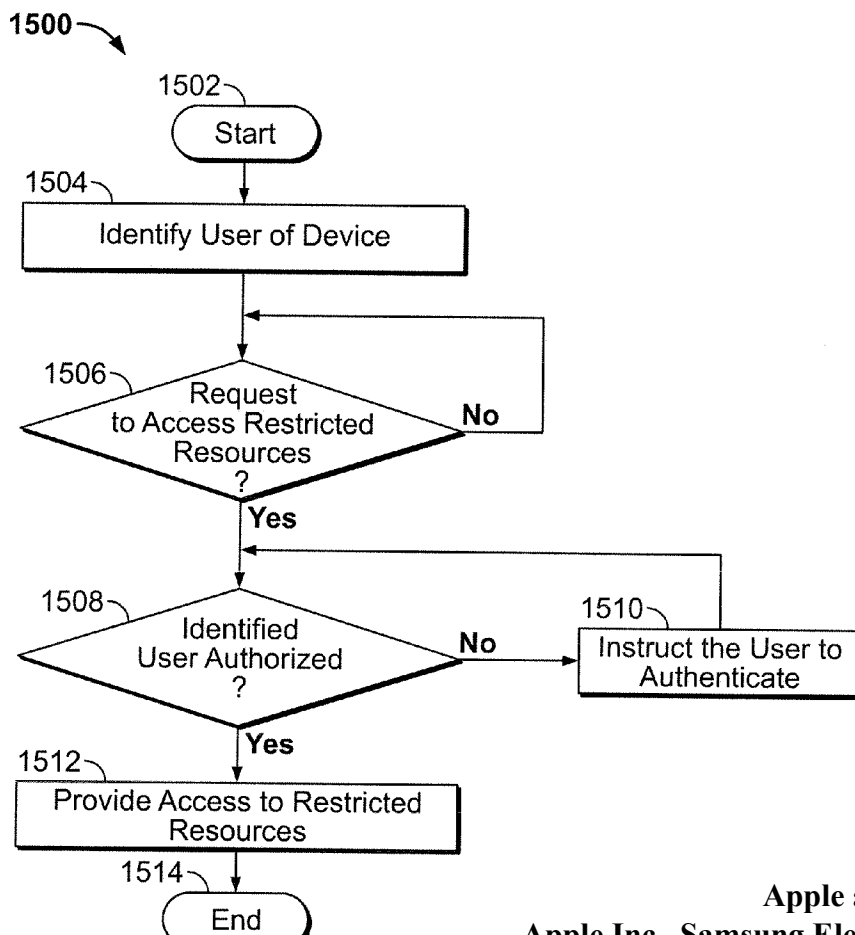
This invention is directed to an electronic device with an embedded authentication system for restricting access to device resources. The authentication system may include one or more sensors operative to detect biometric information of a user. The sensors may be positioned in the device such that the sensors may detect appropriate biometric information as the user operates the device, without requiring the user to perform a step for providing the biometric information (e.g., embedding a fingerprint sensor in an input mechanism instead of providing a fingerprint sensor in a separate part of the device housing). In some embodiments, the authentication system may be operative to detect a visual or temporal pattern of inputs to authenticate a user. In response to authenticating, a user may access restricted files, applications (e.g., applications purchased by the user), or settings (e.g., application settings such as contacts or saved game profile).

Correspondence Address:  
**KRAMER LEVIN NAFTALIS & FRANKEL LLP**  
1177 Avenue of the Americas  
New York, NY 10036 (US)

(73) Assignee: **Apple Inc.**, Cupertino, CA (US)

(21) Appl. No.: **12/207,374**

(22) Filed: **Sep. 9, 2008**



**Apple and Samsung Ex. 1005**

**Apple Inc., Samsung Electronics Co., Ltd., and**

100 →

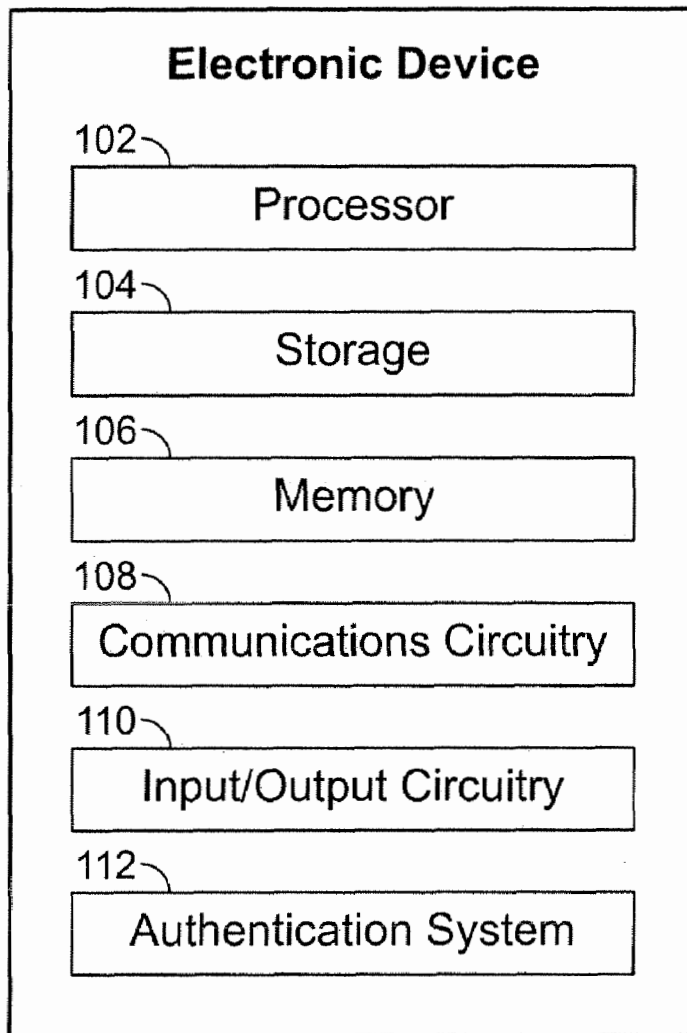


FIG. 1

200

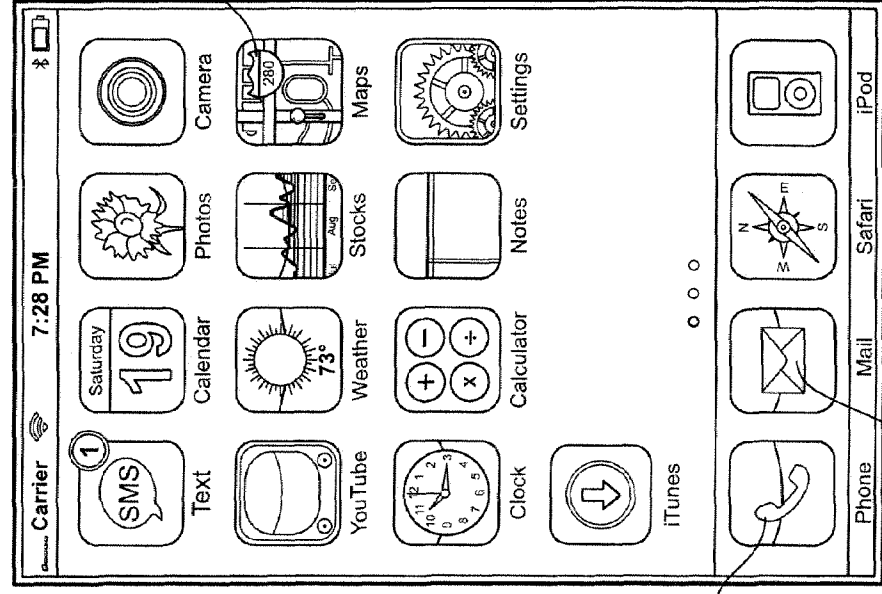


FIG. 2

300

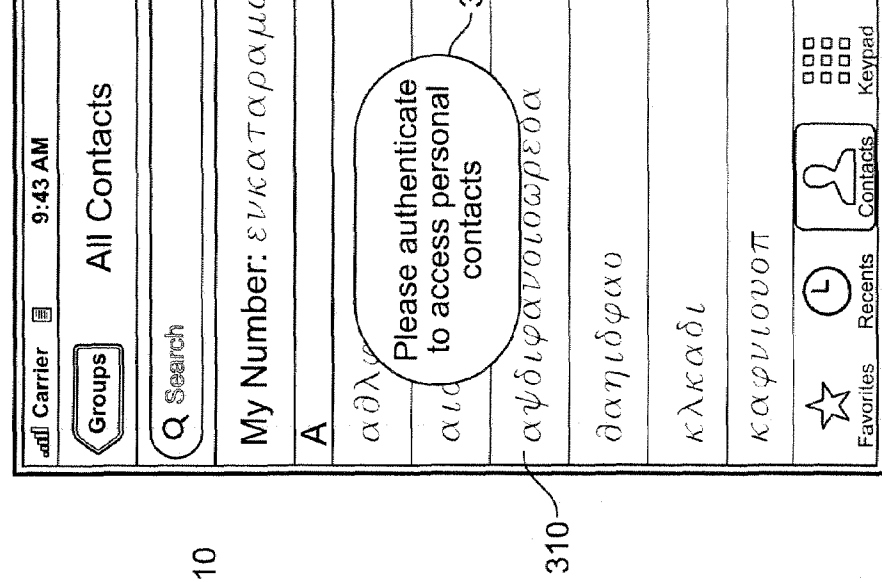
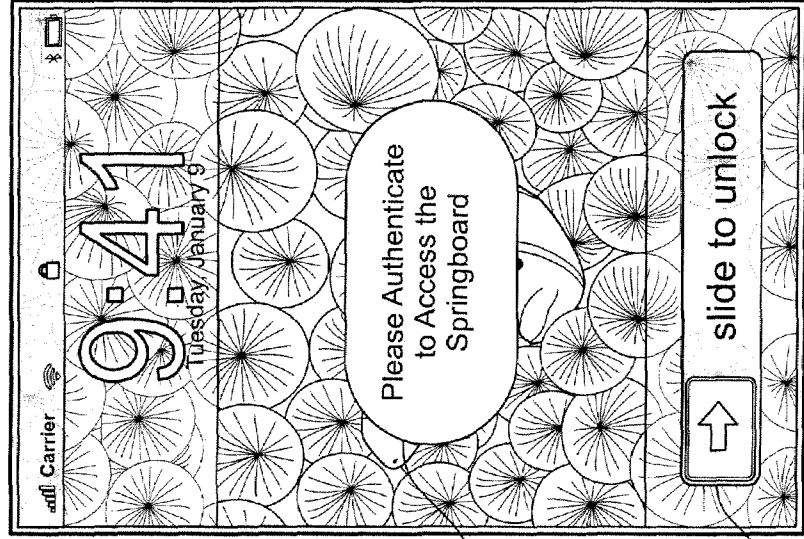


FIG. 3

400

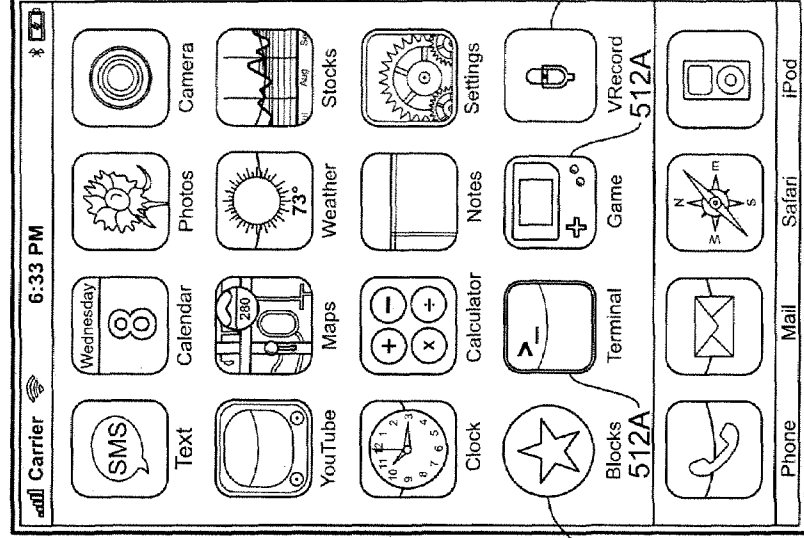


420

410

FIG. 4

500A



512A

FIG. 5A

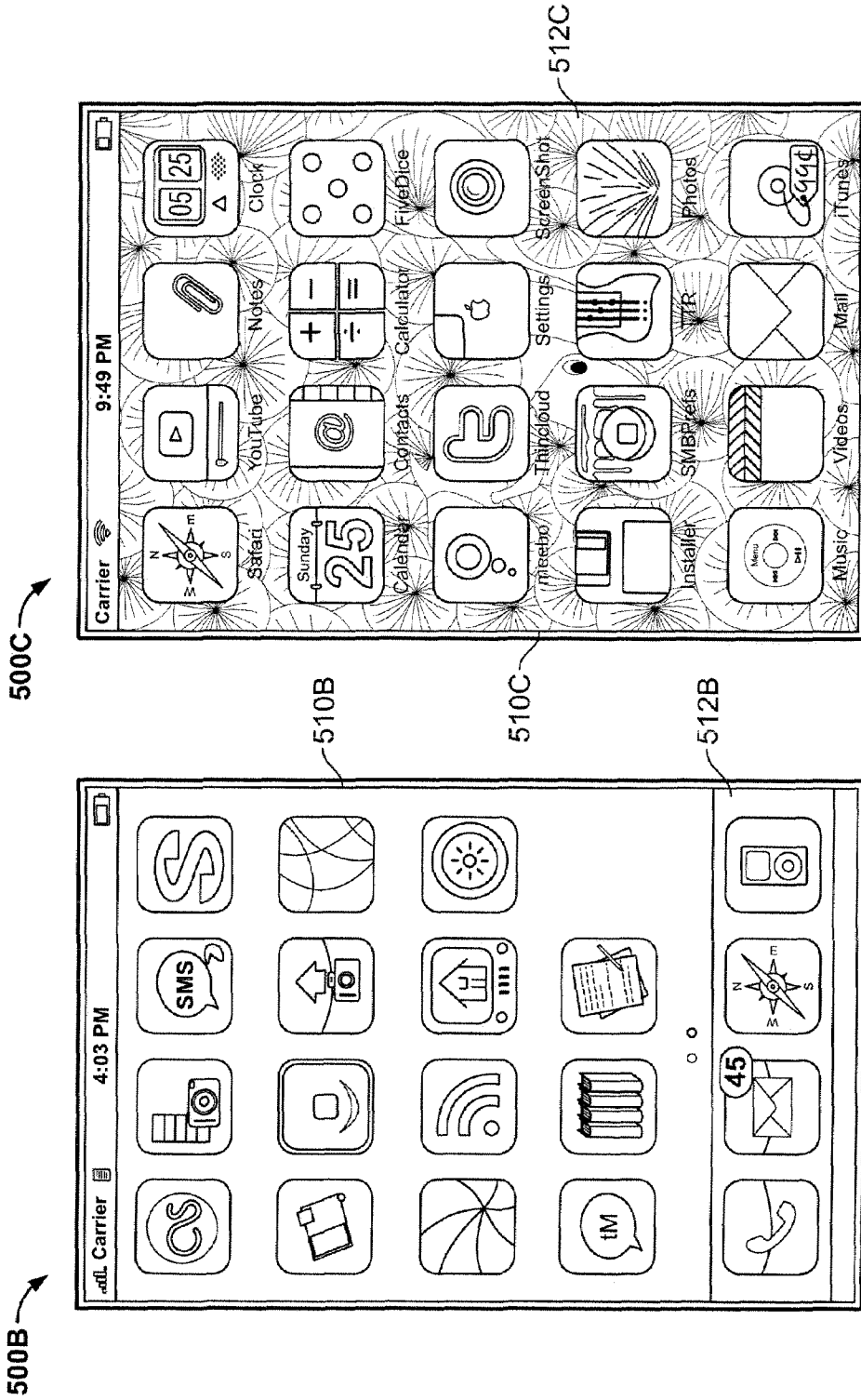


FIG. 5C

FIG. 5B

# Explore Litigation Insights

Docket Alarm provides insights to develop a more informed litigation strategy and the peace of mind of knowing you're on top of things.

## Real-Time Litigation Alerts



Keep your litigation team up-to-date with **real-time alerts** and advanced team management tools built for the enterprise, all while greatly reducing PACER spend.

Our comprehensive service means we can handle Federal, State, and Administrative courts across the country.

## Advanced Docket Research



With over 230 million records, Docket Alarm's cloud-native docket research platform finds what other services can't. Coverage includes Federal, State, plus PTAB, TTAB, ITC and NLRB decisions, all in one place.

Identify arguments that have been successful in the past with full text, pinpoint searching. Link to case law cited within any court document via Fastcase.

## Analytics At Your Fingertips



Learn what happened the last time a particular judge, opposing counsel or company faced cases similar to yours.

Advanced out-of-the-box PTAB and TTAB analytics are always at your fingertips.

## API

Docket Alarm offers a powerful API (application programming interface) to developers that want to integrate case filings into their apps.

## LAW FIRMS

Build custom dashboards for your attorneys and clients with live data direct from the court.

Automate many repetitive legal tasks like conflict checks, document management, and marketing.

## FINANCIAL INSTITUTIONS

Litigation and bankruptcy checks for companies and debtors.

## E-DISCOVERY AND LEGAL VENDORS

Sync your system to PACER to automate legal marketing.