

(12) **United States Patent**
Gross et al.

(10) **Patent No.:** **US 6,553,515 B1**
 (45) **Date of Patent:** **Apr. 22, 2003**

(54) **SYSTEM, METHOD AND COMPUTER PROGRAM PRODUCT FOR DIAGNOSTIC SUPERVISION OF INTERNET CONNECTIONS**

6,289,379 B1 * 9/2001 Urano et al. 709/223
 6,367,037 B1 * 4/2002 Remer et al. 710/105
 6,470,385 B1 * 10/2002 Nakashima et al. 709/224

* cited by examiner

(75) Inventors: **Charles J. Gross**, Earlysville, VA (US);
James R. Hartless, Faber, VA (US);
Vijay K. Sharma, Charlottesville, VA (US);
Michael A. Starr, Charlottesville, VA (US)

Primary Examiner—Robert Beausoliel
Assistant Examiner—Christopher R. McGrath
 (74) *Attorney, Agent, or Firm*—Sterne, Kessler, Goldstein & Fox

(73) Assignee: **Comdial Corporation**, Sarasota, FL (US)

(57) **ABSTRACT**

(*) Notice: Subject to any disclaimer, the term of this patent is extended or adjusted under 35 U.S.C. 154(b) by 0 days.

A system, method and computer program product for managing diagnostic and performance information for communications system terminal endpoints (TEs) communicating over an Internet Protocol (IP) network. The TEs communicate by connections that are voice, modem, facsimile, video, data transmissions, or the like. A Diagnostic Supervisor (DS) transmits Diagnostic Configuration Messages (DCMs) to the TEs. The TEs generate Diagnostic Messages (DMs) based on diagnostic information, including error statistics, voice statistics, facsimile statistics, video statistics, data statistics, or the like, concerning IP network connections in which the TEs participate. The DCMs instructs the TEs how to format and when to transmit DMs. The DMs are transmitted by the TEs to the DS. In a system with more that one DS, the TEs can transmit DMs to the plural DSs, other TEs or any network devices. The DS can be programmed locally or remotely to send various types of DCMs. The DS can also be programmed locally or remotely to provide diagnostic reports based on DMs to network users or to the network administrator. Diagnostic information is used for disconnect supervision, answer detection, attendant supervision, billing management, rerouting of IP connections to the PSTN, and the like.

(21) Appl. No.: **09/393,659**

(22) Filed: **Sep. 10, 1999**

(51) **Int. Cl.⁷** **G06F 11/00**

(52) **U.S. Cl.** **714/47; 714/4; 714/25; 714/43; 709/224**

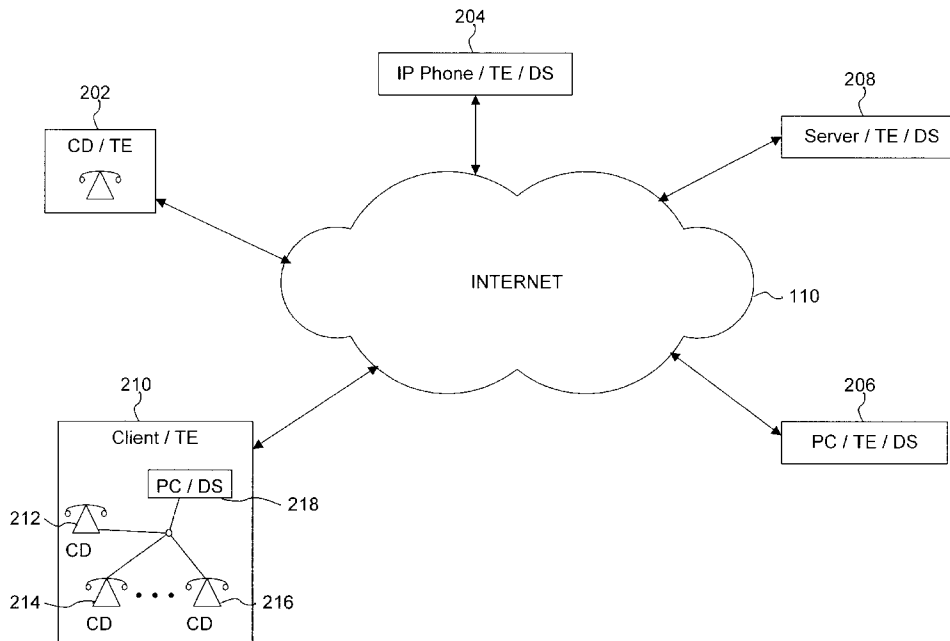
(58) **Field of Search** **714/47, 4, 25, 714/43, 48, 44, 56, 46, 57; 709/224**

(56) **References Cited**

U.S. PATENT DOCUMENTS

5,655,068 A * 8/1997 Opczynski 714/4
 5,696,701 A * 12/1997 Burgess et al. 702/186
 6,108,800 A * 8/2000 Asawa 714/26
 6,138,249 A * 10/2000 Nolet 714/25
 6,205,413 B1 * 3/2001 Bisdikian et al. 703/23
 6,237,114 B1 * 5/2001 Wookey et al. 714/47
 6,286,058 B1 * 9/2001 Hrstar et al. 709/218

54 Claims, 13 Drawing Sheets



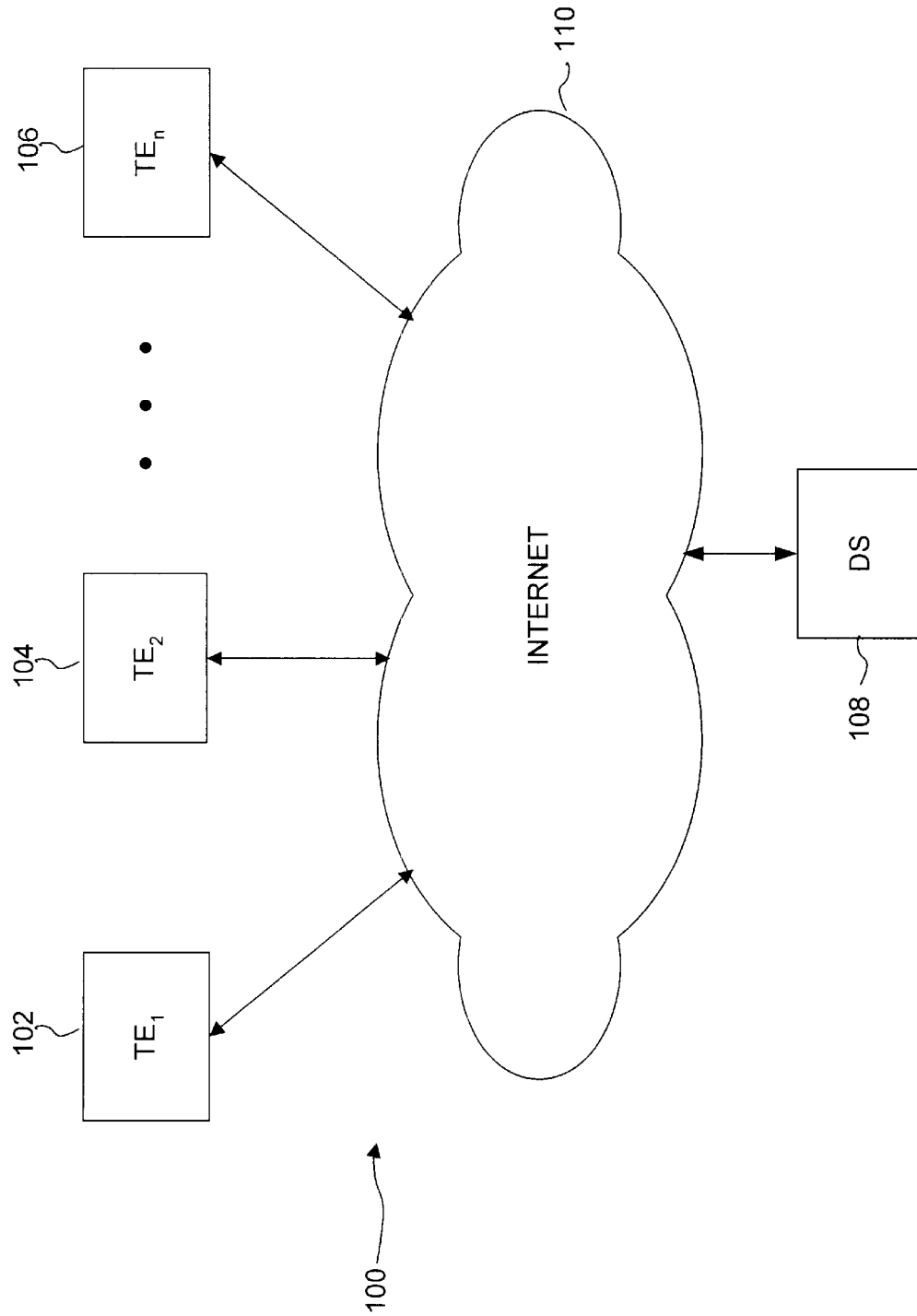


FIG. 1

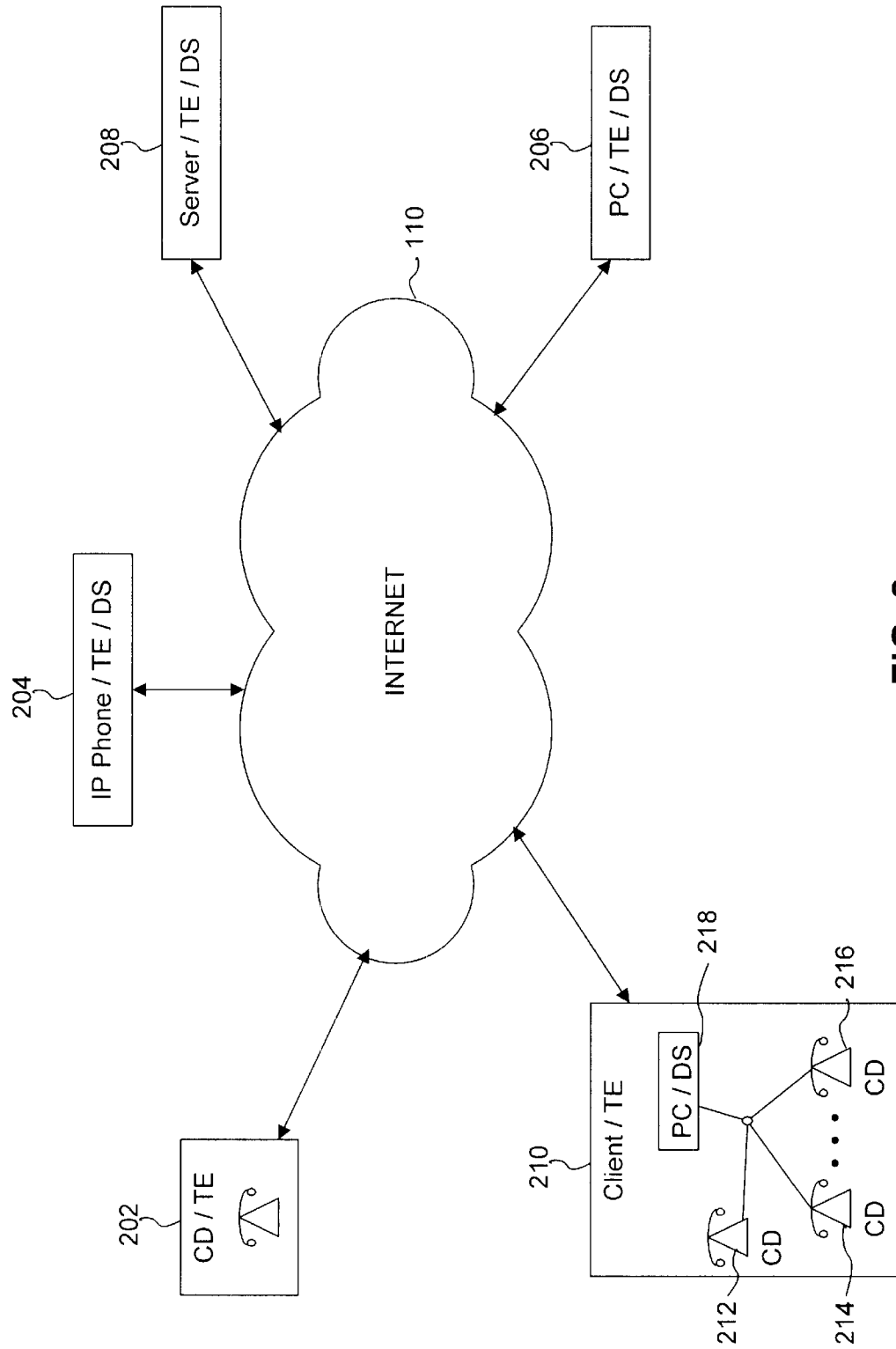


FIG. 2

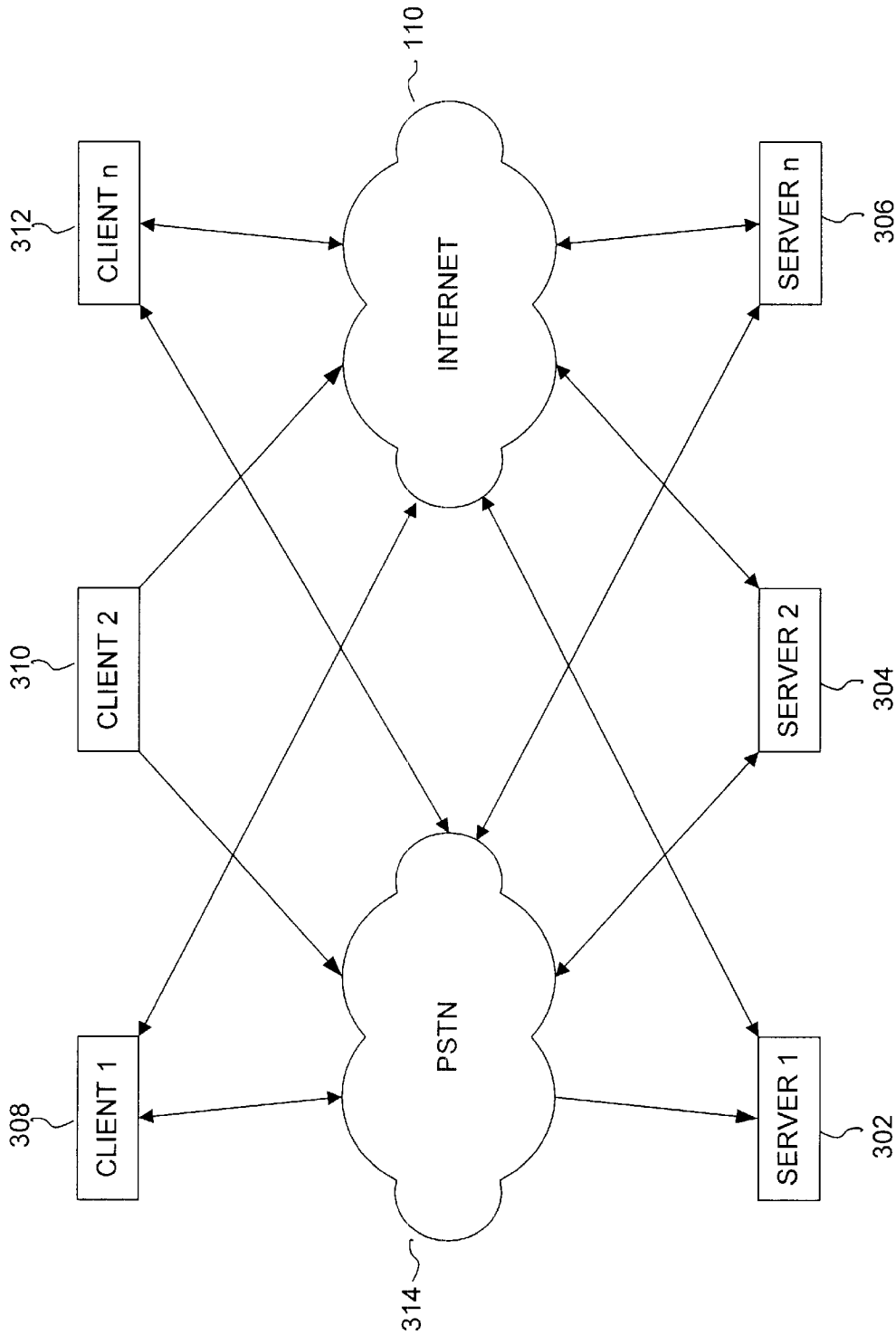


FIG. 3

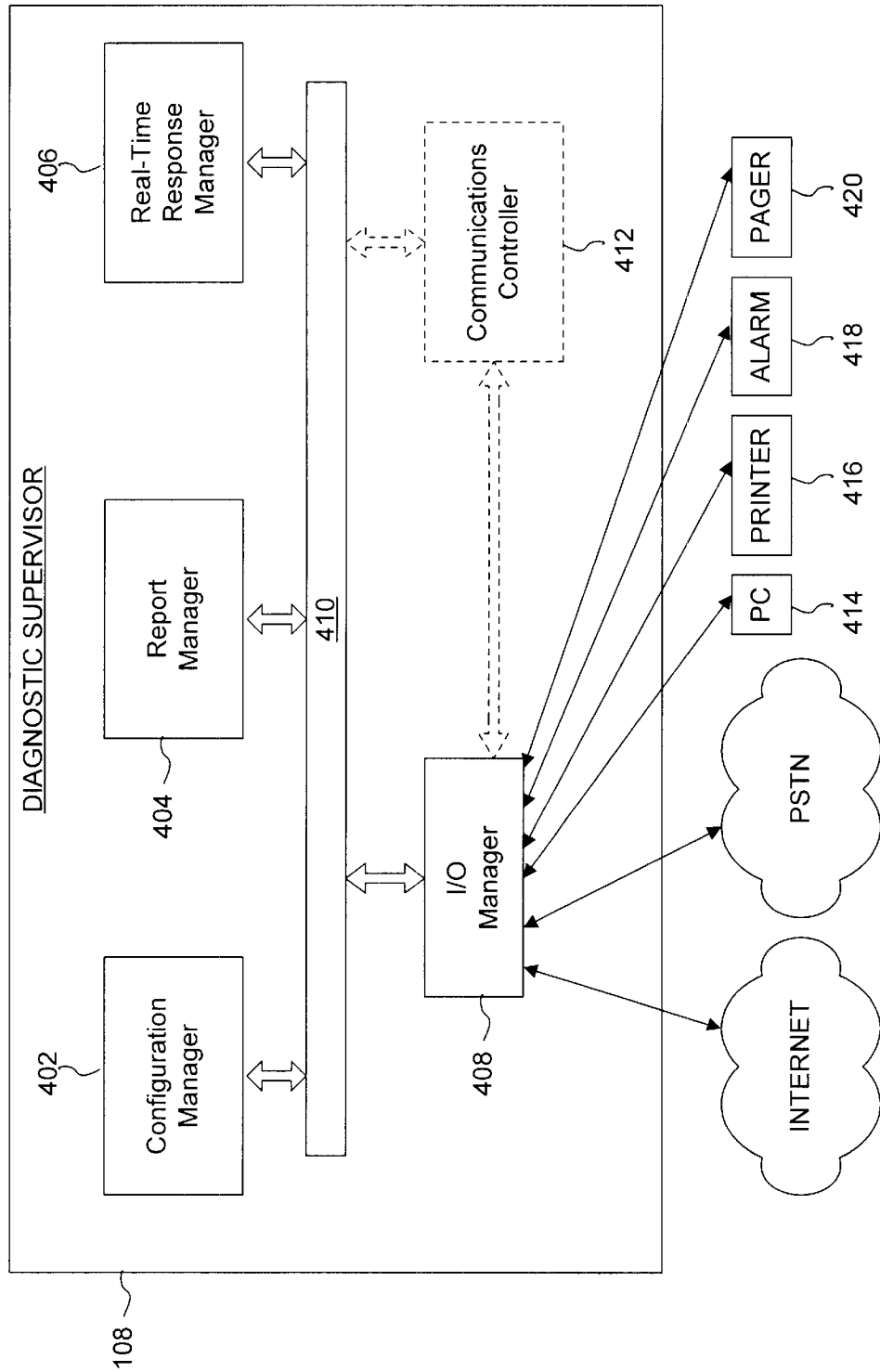


FIG. 4

Explore Litigation Insights

Docket Alarm provides insights to develop a more informed litigation strategy and the peace of mind of knowing you're on top of things.

Real-Time Litigation Alerts



Keep your litigation team up-to-date with **real-time alerts** and advanced team management tools built for the enterprise, all while greatly reducing PACER spend.

Our comprehensive service means we can handle Federal, State, and Administrative courts across the country.

Advanced Docket Research



With over 230 million records, Docket Alarm's cloud-native docket research platform finds what other services can't. Coverage includes Federal, State, plus PTAB, TTAB, ITC and NLRB decisions, all in one place.

Identify arguments that have been successful in the past with full text, pinpoint searching. Link to case law cited within any court document via Fastcase.

Analytics At Your Fingertips



Learn what happened the last time a particular judge, opposing counsel or company faced cases similar to yours.

Advanced out-of-the-box PTAB and TTAB analytics are always at your fingertips.

API

Docket Alarm offers a powerful API (application programming interface) to developers that want to integrate case filings into their apps.

LAW FIRMS

Build custom dashboards for your attorneys and clients with live data direct from the court.

Automate many repetitive legal tasks like conflict checks, document management, and marketing.

FINANCIAL INSTITUTIONS

Litigation and bankruptcy checks for companies and debtors.

E-DISCOVERY AND LEGAL VENDORS

Sync your system to PACER to automate legal marketing.