

- [54] SOLENOID VALVE
- [75] Inventors: Abel E. Kolchinsky, Glenview;
Shaukat Kazi, Chicago, both of Ill.
- [73] Assignee: Imperial Clevite Inc., Glenview, Ill.
- [21] Appl. No.: 392,514
- [22] Filed: Jun. 28, 1982
- [51] Int. Cl.³ F16K 31/40; F16K 31/42
- [52] U.S. Cl. 251/38; 251/77
- [58] Field of Search 251/30, 38, 51, 77,
251/129; 137/269

3,362,679	1/1968	Le Wan	251/38
3,469,590	9/1969	Barker	251/129 X
3,593,241	7/1971	Ludwig	335/262
3,818,398	6/1974	Barbier et al.	335/278
3,858,841	1/1975	Haynes	251/30
4,055,823	10/1977	Andersen	335/255
4,074,700	2/1978	Engle	251/129
4,270,726	6/1981	Hertfelder et al.	251/38

Primary Examiner—Alan Cohan
 Assistant Examiner—John A. Rivell
 Attorney, Agent, or Firm—Russell E. Baumann

- [56] **References Cited**
- U.S. PATENT DOCUMENTS
- | | | | |
|-----------|---------|---------------------|---------|
| 1,054,023 | 2/1913 | Niedecken | 137/269 |
| 1,587,921 | 6/1926 | Ray . | |
| 2,114,961 | 4/1938 | Gille | 137/139 |
| 2,238,401 | 4/1941 | Shaw | 251/129 |
| 2,251,441 | 8/1941 | Dillman | 137/139 |
| 2,285,323 | 6/1942 | Beekley et al. | 251/38 |
| 2,381,075 | 8/1945 | Nelson | 200/111 |
| 2,392,741 | 1/1946 | Hurlburt | 277/36 |
| 2,612,188 | 9/1952 | Persons | 251/129 |
| 2,616,955 | 11/1952 | Dube et al. | 175/341 |
| 2,665,708 | 1/1954 | Ghormley | 137/493 |
| 2,805,038 | 9/1957 | Towler et al. | 251/28 |
| 2,951,133 | 8/1960 | Davies et al. | 200/87 |
| 2,969,088 | 1/1961 | Kramer | 251/38 |
| 2,990,155 | 6/1961 | Selinder | 251/30 |
| 3,108,777 | 10/1963 | Ray | 251/129 |
| 3,215,902 | 11/1965 | Foley et al. | 317/123 |
| 3,250,293 | 5/1966 | Adams et al. | 137/528 |

[57] **ABSTRACT**

A cartridge solenoid poppet valve (10) arranged to use a single size pilot valve (31) with any one of a set of a plurality of different size sets of valve seat members (14) and poppet valves (24). Pilot guides (175) are provided having different transverse extents to accommodate such different size valve members. The valve further includes a flatted pilot guide (32) defining flow passages communicated between a transfer chamber (35) and a pilot valve chamber (30) in which the pilot valve (31) is disposed. A T-slot (58) is provided in the solenoid plunger (38) extending fully diametrically thereacross and the pilot valve includes a T-shaped connecting head (71) received therein. The plunger (38) and plug (41) define cooperating stop surfaces (67,70) for maintaining a small spacing between the plunger and plug at all times.

12 Claims, 6 Drawing Figures

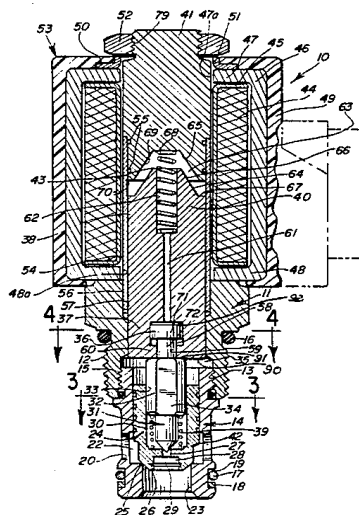


FIG. 1

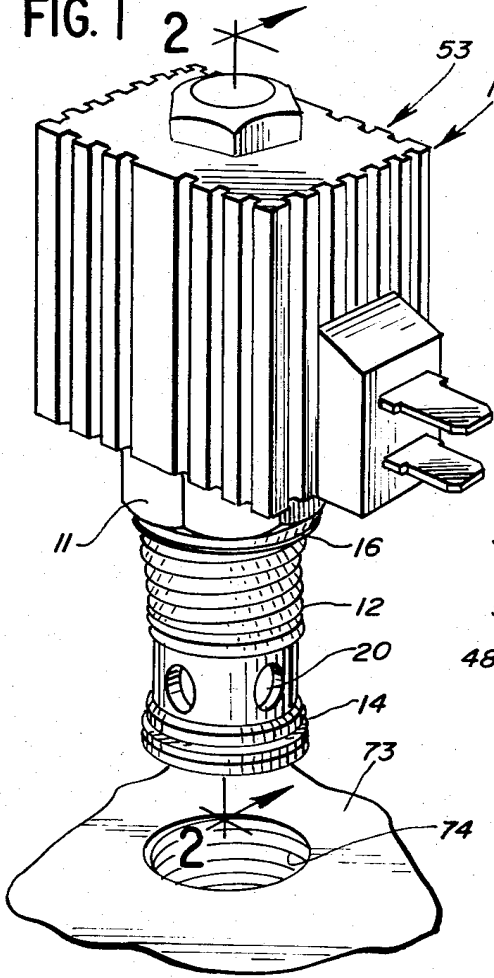


FIG. 2

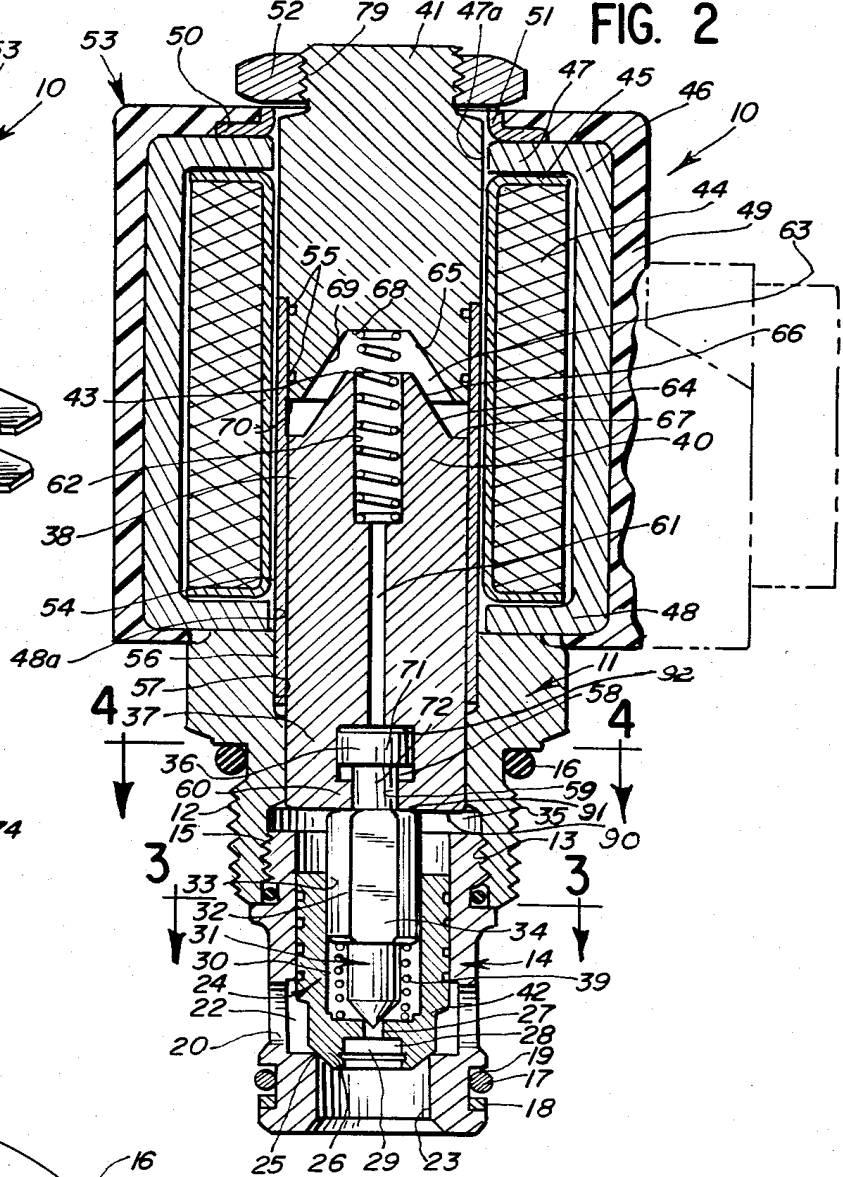


FIG. 3

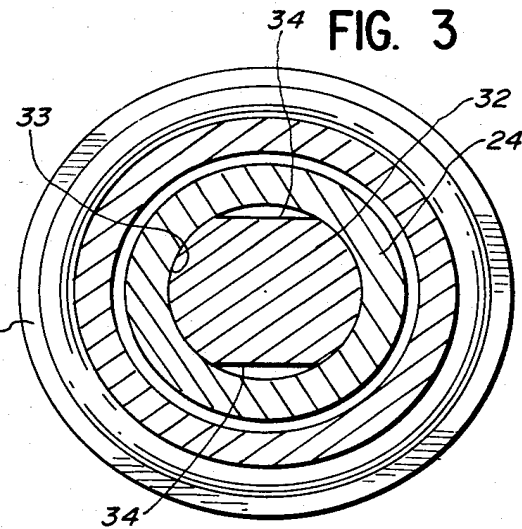


FIG. 4

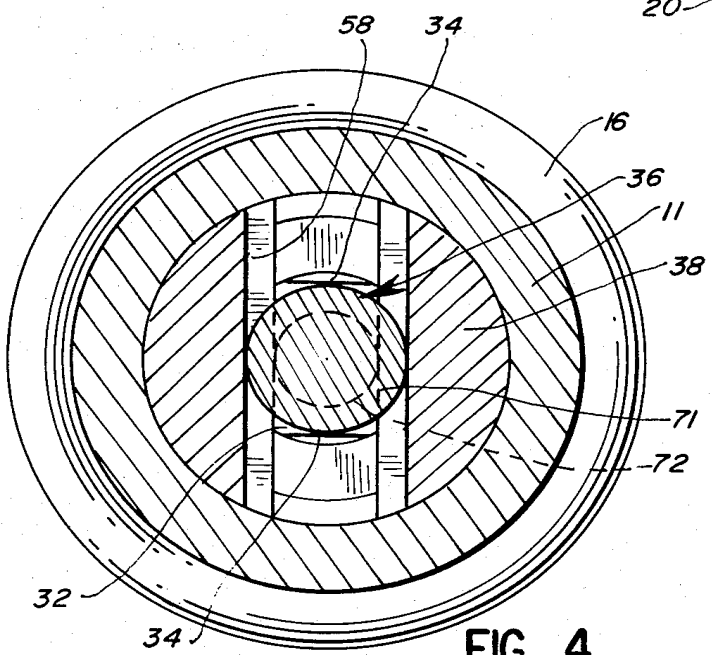


FIG. 5

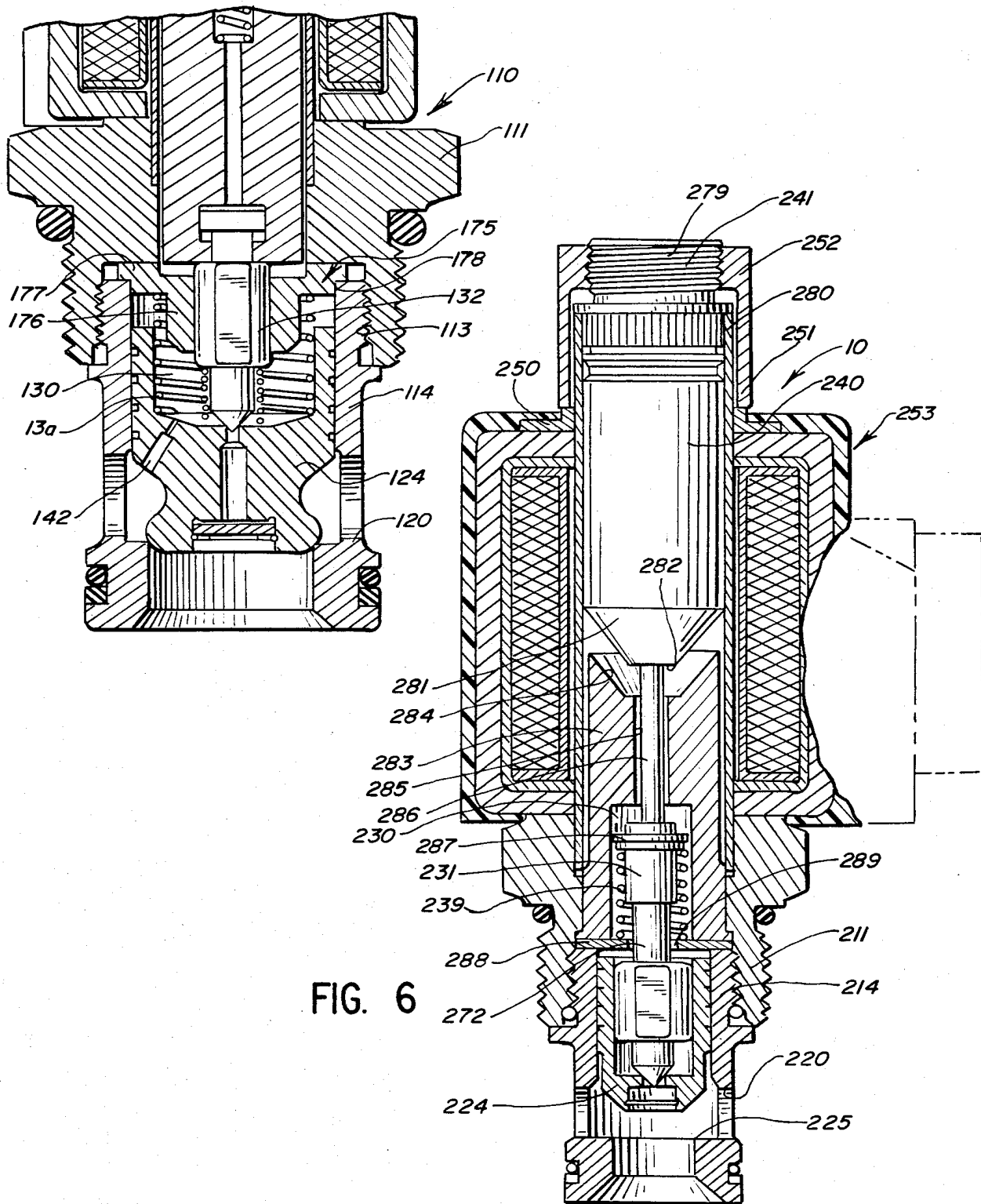


FIG. 6

SOLENOID VALVE

BACKGROUND OF THE INVENTION

1. Field of the Invention

This invention relates to valves and in particular to solenoid-operated cartridge valves.

2. Description of the Prior Art

In one form of fluid flow control valve, a poppet is seated against a valve seat to close the valve. The poppet is provided with a through bore which is selectively closed by a pilot valve. The poppet is spring-biased to the closed position with fluid pressure acting on opposite sides of the poppet so as to permit the spring biasing to maintain the poppet closed. When the pilot valve is raised from the valve seat, the fluid pressure behind the poppet is relieved to the through bore, thus permitting the fluid pressure acting upwardly on the poppet to move the poppet from the valve seat and thereby permit flow through the valve.

In one form, the pilot valve is operated by a suitable solenoid having a plunger connected to the pilot valve for selective positioning thereof in effecting the desired fluid flow control.

Such valves are provided in a wide range of sizes depending on the flow capacity desired.

It is further conventional to provide such valves in the form of cartridges, including both the valve and the solenoid operator in a single assembly which, illustratively, may be connected to suitable ports by a threaded adapter portion thereof.

SUMMARY OF THE INVENTION

The present invention comprehends an improved solenoid poppet valve structure providing improved performance and economy of manufacture.

The invention comprehends the provision of such a valve having an improved pilot valve guide arranged to utilize the single size pilot valve with any one set of a plurality of different size cooperating sets of valve seat members and poppets, each having the same pilot valve seat configuration.

In the illustrated embodiment, the pilot guide comprises any one of a plurality of pilot guides each having a different lateral extent outturned flange for permitting a single size valve pilot to be utilized with any one of the different size sets of seat members and poppets.

The invention comprehends the provision of such a valve structure wherein the slide portion of the pilot defines a flatted cross section to define flow passages extending longitudinally at the periphery of the slide portion.

In the illustrated embodiment, a pair of flats on diametrically opposite sides of the pilot slide portion is provided.

The invention further comprehends providing a T-slot in the solenoid plunger, with the valve pilot having a connecting head received in the T-slot.

In the illustrated embodiment, the T-slot extends fully diametrically across the plunger.

More specifically, the invention comprehends the provision in a solenoid valve structure having a plunger and a valve pilot for controlling the movement of a main valve poppet, of means in an end portion of the plunger defining a radially extending T-slot, the longitudinal portion of which opens through the end of the plunger, and means on the valve pilot defining a connecting head received in the slot, the T-slot extending

fully transversely through the plunger, the longitudinal extent of the longitudinal portion of the T-slot being less than approximately one-half the longitudinal extent of the T-slot.

The connecting head has a transverse extent throughout less than that of the T-slot permitting ready fluid flow past the connecting head into the T-slot.

The pilot guide defines a surface adjacent the end portion of the plunger forming a fluid chamber opening to the longitudinal portion of the T-slot.

The invention further comprehends the provision of a solenoid valve structure having solenoid means defining a plunger chamber, a solenoid plunger reciprocally slidable in the chamber, and valve means connected to the plunger at one end of the plunger chamber defining a tapered surface narrowing to a transverse end surface, means on an adjacent end of the solenoid plunger defining a complementary tapered surface and transverse end surface, passage means in the solenoid plunger for conducting fluid from the portion of the chamber between the surfaces, and means for limiting the movement of the solenoid plunger toward the surface means at one end of the plunger chamber to prevent engagement of the transverse end surfaces and maintain a fluid transfer portion in the plunger chamber between the end surfaces at all times communicating with the passage means.

In the illustrated embodiment, the tapered surfaces are substantially frustoconical.

In the illustrated embodiment, the transverse end surfaces are substantially planar.

The movement limiting means in the illustrated embodiment comprises cooperating stop surfaces on the solenoid plunger and solenoid means at the wide end of the plunger chamber tapered surface.

The cartridge solenoid poppet valve structure of the present invention is extremely simple and economical of construction while yet providing the highly desirable features discussed above.

BRIEF DESCRIPTION OF THE DRAWING

Other features and advantages of the invention will be apparent from the following description taken in connection with the accompanying drawing wherein:

FIG. 1 is a perspective view of a cartridge valve embodying the invention;

FIG. 2 is an enlarged diametric section thereof;

FIG. 3 is a transverse section taken substantially along the line 3—3 of FIG. 2;

FIG. 4 is a transverse section taken substantially along the line 4—4 of FIG. 2;

FIG. 5 is a diametric section of a modified form of cartridge form embodying the invention having a pilot guide adapted for use with different size poppet and seat members; and

FIG. 6 is a diametric section of a cartridge valve generally similar to the cartridge valve of FIGS. 1-5, but arranged for normally open operation

DESCRIPTION OF THE PREFERRED EMBODIMENT

In the illustrative embodiment of the invention as disclosed in the drawing, a cartridge solenoid poppet valve generally designated 10 includes an adapter 11 having a threaded portion 12 adapted to be threaded into a fluid port. The adapter includes a threaded end 13. A seat member 14 is provided with a threaded end

15 threaded to the adapter end 13 so as to be received within the fluid port.

A first sealing ring 16 is provided on the adapter and a second sealing ring 17 is provided on the seat member for sealing the valve assembly within the fluid port.

As shown in FIG. 2, a backup ring 18 may be associated with the sealing ring 17 in a suitable outwardly opening, annular recess 19 of the seat member.

The seat member is provided with a pair of diametrically opposite inlet openings 20 and 21, which open radially inwardly into a valve chamber 22 within the seat member. An outlet opening 23 opens axially from the valve chamber 22 and is normally closed by a valve member 24 seating on an annular seat 25 of the seat member at the inner end of the outlet port 23.

Thus, when installed in a suitable port member, fluid pressure between seals 16 and 17 is applied through the inlet ports 20 and 21 against the valve member 24. In the illustrated embodiment, valve member 24 comprises a poppet valve having a lower seating portion 26 engaging the valve seat 25 and provided with an axial bore 27 having an outer counterbore 28 receiving a check valve 29. The check valve prevents fluid pressure in the outlet port 23 from causing a reverse flow through the bore 27 into a pilot valve chamber 30 within the valve member 24.

Bore 27 is normally closed by a pilot valve 31 having a slide portion 32 slidably received in an upper cylindrical recess 33 of the valve member 24. The slide portion 32 is provided with a pair of diametrically opposite flats 34 for providing fluid communication between a transfer chamber 35 and the pilot valve chamber 30.

Slide portion 32 acts as a pilot guide and defines an upper end 36 abutting a lower end 37 of a solenoid plunger 38 in the normally closed arrangement of the valve. A helical coil spring 39 extends between the guide portion 32 and the seating portion 26 of valve member 24 to bias the poppet valve downwardly relative to the guide portion 32. As shown in FIG. 2, however, when plunger 38 is in the outermost position with portion 37 thereof abutting the inner end 36 of the pilot guide portion 34, the plunger urges both the pilot valve and the poppet valve 24 outwardly into the seated arrangements of FIG. 2.

In the normally closed arrangements of the solenoid valve 10, the plunger is biased outwardly by a helical coil spring 43 acting between an inner end portion 40 of the plunger and a plug 41. Spring 43 has a strength greater than spring 39 and, thus, overcomes the spring 39 to arrange the valve components in the normally closed position of FIG. 2.

As further illustrated in FIG. 2, valve member 24 is provided with a bleed passage 42 providing communication between the inlet 20 and the pilot valve chamber 30 at all times. Thus, in the normally closed position wherein the pilot valve 31 is closing the pilot opening 27, fluid pressure at the inlet openings 20 is transmitted through the bleed passage 42 into the pilot valve chamber 30 and acts to maintain the poppet valve member 24 in the closed position illustrated in FIG. 2, in cooperation with the springs 43 and 39.

Pilot valve 31 is moved from the seated position illustrated in FIG. 2 by suitable longitudinal movement of plunger 38 inwardly toward plug 41 under the control of a solenoid coil 44. In the illustrated embodiment, the coil 44 is carried in an annular bobbin 45 mounted within an open-sided, generally parallelepiped shaped, enclosing frame 46 having an inner end 47 and an oppo-

site outer end 48. Frame end 47 is provided with an opening 47a inwardly through which plug 41 extends and frame end 48 is provided with an opening 48a outwardly through which plunger 38 extends. The frame is encapsulated in an outer housing 49 which may be formed of a suitable synthetic resin. The space within the frame surrounding the coil may be filled with a suitable synthetic resin, such as an epoxy resin.

A washer 50 is provided in the housing surrounding the upper end of plug 41, and is provided with an axially turned inner end portion 51 extending outwardly to the outer surface of the housing to be engaged by a nut 52 threaded to the distal threaded end 53 of the plug 41.

End 48 of the frame abuts the adapter 11 radially inwardly of the housing 49 and, thus, nut 52 acting through washer 50 and frame 46 effectively clamps the solenoid structure generally designated 53 to the adapter.

As further illustrated in FIG. 2, a slide tube 54 is secured to the plug 41 as by brazing 55 to extend inwardly of the bobbin 45 and includes a lower end portion 56 received in a suitable recess 57 in the adapter 11. Plunger 38 is reciprocably slidable in the tube 54 between the normally closed position of the valve illustrated in FIG. 2, and an open position of the valve wherein the plunger is raised into abutment with plug 41.

Upper end 36 of pilot valve 32 defines a cylindrical head received in a T section transverse slot 58 provided in the lower end of the plunger 38. The stem portion 59 of the slot is relatively short so as to provide high strength in the end portion 60 of plunger 38 confronting the transfer chamber 35.

A fluid flow passage 61 extends from the T-slot upwardly to a recess 62 receiving coil spring 43 and opening to the space 63 between the upper end 64 of plunger 40 and the lower end 65 of plug 41.

Illustrated in FIG. 2, surface 64 of the plunger is defined by a radially inner frustoconical portion 66 and a radially outer annular planar portion 67. Surface 65, in turn, is defined by a planar radially inner portion 68, a frustoconical midportion 69 and an annular planar outer portion 70.

The length of frustoconical surface portion 66 is made to be slightly less than the length of frustoconical surface portion 69 of plug 41 so that when the plunger is moved inwardly upon energization of the coil 44, surface 67 of the plunger abuts surface 70 of the plug, with the plunger remaining spaced from the planar surface 68 of the plug, thereby to avoid entrapment of fluid in the space 63 upon energization of the solenoid.

Fluid may flow freely from space 63 upon such energization of the solenoid downwardly through recess 62 and passage 61 into T-slot 58. End portion 36 of the pilot valve includes a cylindrical head portion 71 and a reduced diameter cylindrical stem portion 72 connected to the slidable guide portion 32 of the pilot valve. Stem portion 72 has clearance with the plunger portion 60 within the stem portion 59 of the T-slot so that fluid may flow freely downwardly past the stem portion 72 of the pilot valve end portion into the transfer chamber 35.

As indicated above, the slidable guide portion 32 of the pilot valve is provided with at least a pair of diametrically opposite flats 34 defining flow passages for permitting flow of the entrapped fluid outwardly there-through into the pilot valve chamber 30 for delivery

Explore Litigation Insights

Docket Alarm provides insights to develop a more informed litigation strategy and the peace of mind of knowing you're on top of things.

Real-Time Litigation Alerts



Keep your litigation team up-to-date with **real-time alerts** and advanced team management tools built for the enterprise, all while greatly reducing PACER spend.

Our comprehensive service means we can handle Federal, State, and Administrative courts across the country.

Advanced Docket Research



With over 230 million records, Docket Alarm's cloud-native docket research platform finds what other services can't. Coverage includes Federal, State, plus PTAB, TTAB, ITC and NLRB decisions, all in one place.

Identify arguments that have been successful in the past with full text, pinpoint searching. Link to case law cited within any court document via Fastcase.

Analytics At Your Fingertips



Learn what happened the last time a particular judge, opposing counsel or company faced cases similar to yours.

Advanced out-of-the-box PTAB and TTAB analytics are always at your fingertips.

API

Docket Alarm offers a powerful API (application programming interface) to developers that want to integrate case filings into their apps.

LAW FIRMS

Build custom dashboards for your attorneys and clients with live data direct from the court.

Automate many repetitive legal tasks like conflict checks, document management, and marketing.

FINANCIAL INSTITUTIONS

Litigation and bankruptcy checks for companies and debtors.

E-DISCOVERY AND LEGAL VENDORS

Sync your system to PACER to automate legal marketing.