



US 20060218232A1

(19) **United States**

(12) **Patent Application Publication** (10) **Pub. No.: US 2006/0218232 A1**

Kubala et al.

(43) **Pub. Date: Sep. 28, 2006**

(54) **METHOD AND SYSTEM FOR ACCOMMODATING MANDATORY RESPONSES IN ELECTRONIC MESSAGING**

(52) **U.S. Cl. 709/206; 709/224**

(75) Inventors: **Michael Kubala**, Austin, TX (US);
David Kulczar, Austin, TX (US);
Leonel Saenz III, Austin, TX (US);
Thanh K. Tran, Pflugerville, TX (US)

(57) **ABSTRACT**

Correspondence Address:
IBM CORP (JRB)
C/O LAW OFFICE OF JOSEPH R BURWELL
P O BOX 28022
AUSTIN, TX 78755-8022 (US)

A method, system, apparatus, or computer program product is presented for processing electronic messages. An electronic message is received for a recipient from a sender, and a data field is detected in the received electronic message that indicates a request by the sender for a response from the recipient for the received electronic message. The recipient is alerted to the detected request for the response for the received electronic message, and after alerting the recipient, actions are required by the recipient with respect to usage of a data processing system until the recipient uses the data processing system to send a response for the received electronic message to the sender. For example, the recipient can be prevented from closing a review of the received e-mail message, from deleting the received e-mail message, and from exiting the e-mail application until the recipient has responded to the received email message.

(73) Assignee: **International Business Machines Corp.**

(21) Appl. No.: **11/089,388**

(22) Filed: **Mar. 24, 2005**

Publication Classification

(51) **Int. Cl.**
G06F 15/16 (2006.01)
G06F 15/173 (2006.01)

E-mail application warning!	1102	<input type="checkbox"/>
The message that you are currently reviewing cannot be closed until you reply to the message.		
	1104	<input type="button" value="OK"/>

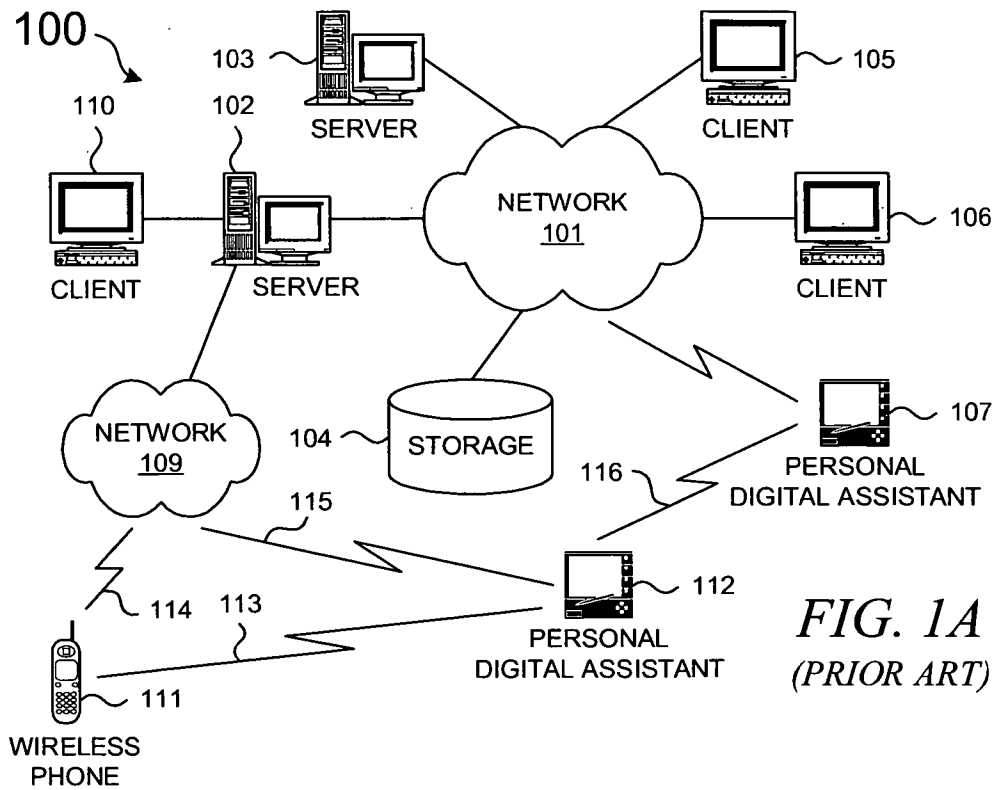


FIG. 1A
(PRIOR ART)

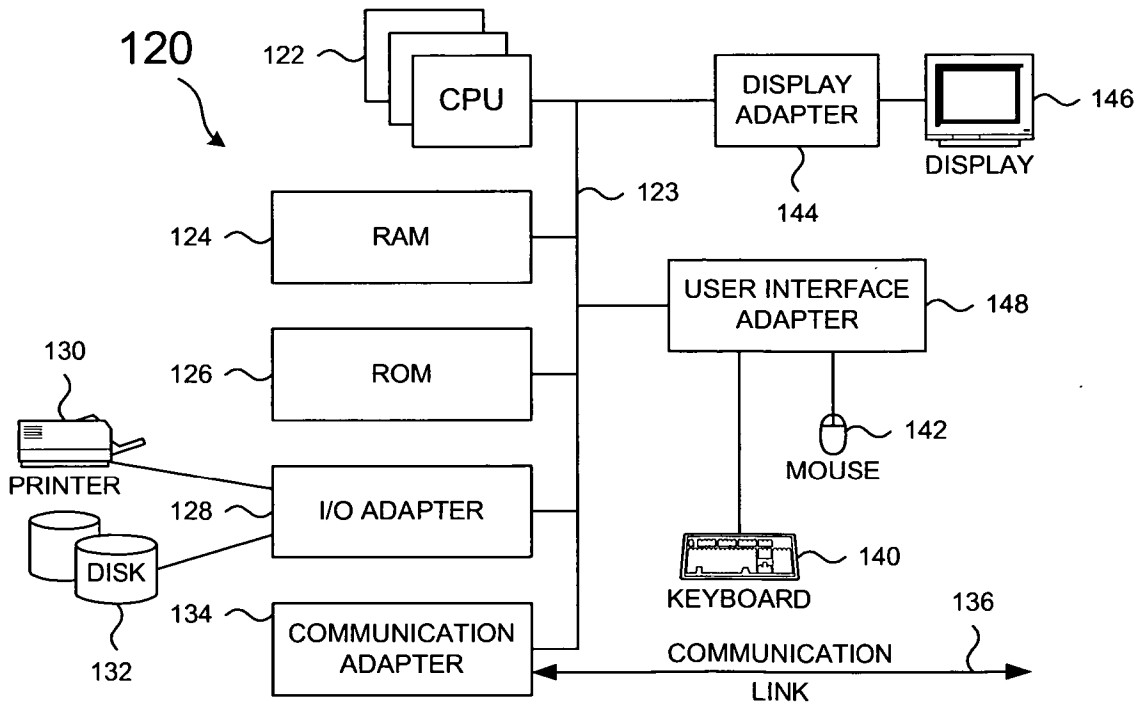


FIG. 1B
(PRIOR ART)

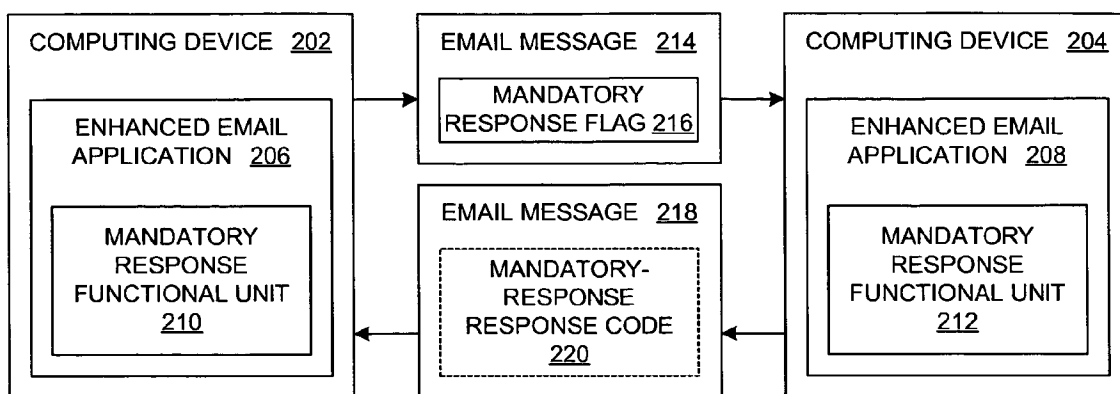


FIG. 2

```

304 ~ Message-ID: <BAY10-F27BA89BD946D0AA37A0@ibm.com>
      Received: from 61.64.67.100 by bay10.mail.ibm.com;
      Sat, 29 Jan 2005 20:53:59 GMT
      In-Reply-To: <BAY10-F18E133A529A4EBA3830@ibm.com>
      X-Mandatory-Response: 1.0
      From: "IBM ADMIN 93825" <admin93825@ibm.com>
      To: admin-hr@ibm.com
      Subject: New employee
      Date: Sat, 29 Jan 2005 15:53:59 -0500
      Mime-Version: 1.0
      Content-Type: text/plain; format=flowed
  
```

FIG. 3

```

...
From: "IBM ADMIN 93825" <admin93825@ibm.com>
To: admin-hr@ibm.com
Subject: New employee
Date: Sat, 29 Jan 2005 15:53:59 -0500
...
Jane--Has the new employee arrived yet? --John
  
```

402 ~ <x-mandatory-response: 1.0>

FIG. 4

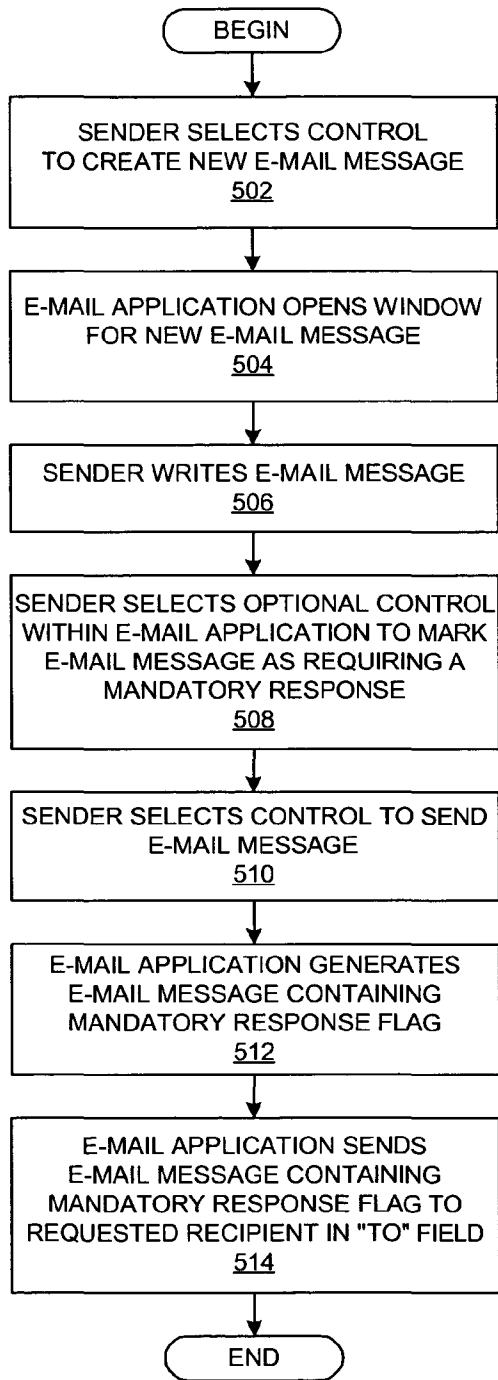


FIG. 5

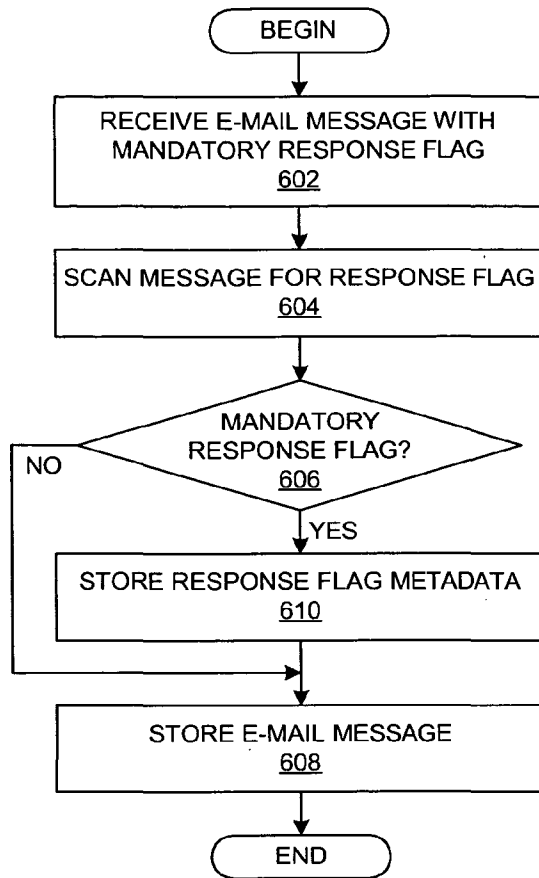


FIG. 6

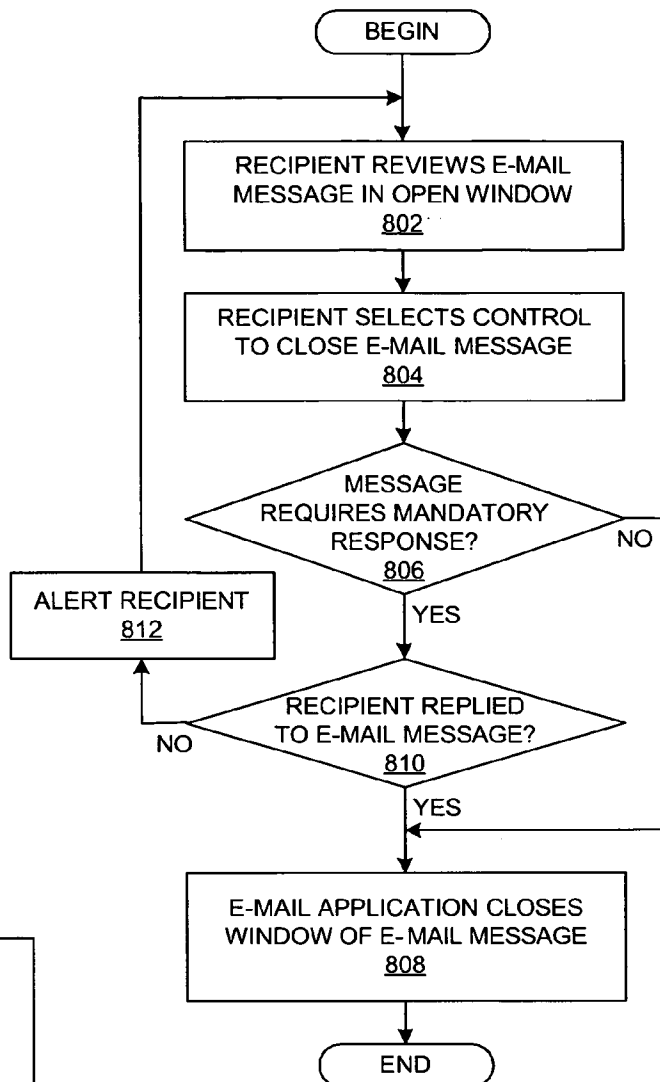


FIG. 8

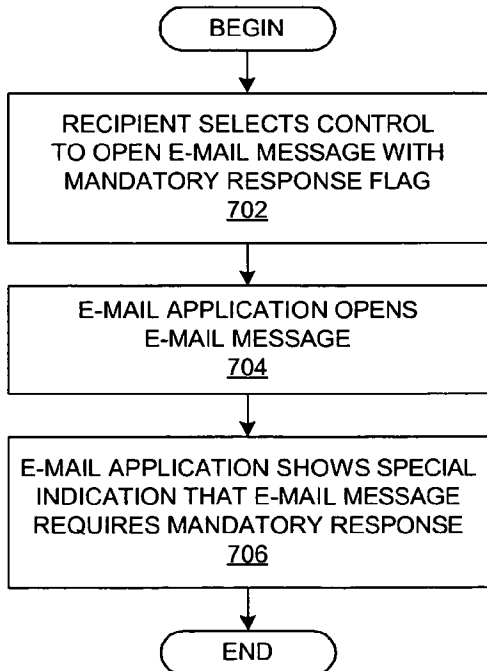


FIG. 7

Explore Litigation Insights

Docket Alarm provides insights to develop a more informed litigation strategy and the peace of mind of knowing you're on top of things.

Real-Time Litigation Alerts



Keep your litigation team up-to-date with **real-time alerts** and advanced team management tools built for the enterprise, all while greatly reducing PACER spend.

Our comprehensive service means we can handle Federal, State, and Administrative courts across the country.

Advanced Docket Research



With over 230 million records, Docket Alarm's cloud-native docket research platform finds what other services can't. Coverage includes Federal, State, plus PTAB, TTAB, ITC and NLRB decisions, all in one place.

Identify arguments that have been successful in the past with full text, pinpoint searching. Link to case law cited within any court document via Fastcase.

Analytics At Your Fingertips



Learn what happened the last time a particular judge, opposing counsel or company faced cases similar to yours.

Advanced out-of-the-box PTAB and TTAB analytics are always at your fingertips.

API

Docket Alarm offers a powerful API (application programming interface) to developers that want to integrate case filings into their apps.

LAW FIRMS

Build custom dashboards for your attorneys and clients with live data direct from the court.

Automate many repetitive legal tasks like conflict checks, document management, and marketing.

FINANCIAL INSTITUTIONS

Litigation and bankruptcy checks for companies and debtors.

E-DISCOVERY AND LEGAL VENDORS

Sync your system to PACER to automate legal marketing.