

Review Article

*Current Concepts***STATUS EPILEPTICUS**

DANIEL H. LOWENSTEIN, M.D.,
AND BRIAN K. ALLDREDGE, PHARM.D.

A PATIENT in status epilepticus has continuous or rapidly repeating seizures. Although the danger of this pattern of seizure activity has been recognized since antiquity, our understanding of the pathophysiology of status epilepticus is incomplete. The frequency of cases in the United States is approximately 102,000 to 152,000 per year, and roughly 55,000 deaths are associated with status epilepticus annually.¹ Twelve to 30 percent of adult patients with a new diagnosis of epilepsy first present in status epilepticus.^{2,3} This review focuses on generalized status epilepticus, which is the most common form of the disorder.^{1,4} This is a life-threatening condition that always requires prompt management. Our review emphasizes issues relevant to adults and older children; status epilepticus in younger children has been reviewed in detail elsewhere.^{5,6}

DEFINITIONS

In 1981, the International League against Epilepsy defined status epilepticus as a seizure that “persists for a sufficient length of time or is repeated frequently enough that recovery between attacks does not occur.”⁷ The lack of a specific duration of the seizures has made this definition difficult to use. More recent publications have defined status epilepticus as seizures that persist for 20 to 30 minutes, which is an estimate of the duration necessary to cause injury to central nervous system neurons.^{4,5,8} Practitioners recognize the need to begin therapy for status epilepticus well before 20 minutes have elapsed, so such a definition is also unsuitable as a guide for treatment. Since isolated tonic-clonic seizures in adults rarely last more than a few minutes, we advocate the use of an operational definition of

status epilepticus: either continuous seizures lasting at least five minutes or two or more discrete seizures between which there is incomplete recovery of consciousness.^{9,10} This definition differs from that of serial seizures, which are two or more seizures occurring over a relatively brief period (i.e., minutes to many hours), but with the patient regaining consciousness between the seizures.

CLINICAL FEATURES OF GENERALIZED STATUS EPILEPTICUS

When first seen, patients with status epilepticus are unresponsive and usually have clinically obvious seizures, such as tonic, clonic, or tonic-clonic movements of the extremities. With time, however, the clinical manifestations often become subtle, and the diagnosis requires careful observation. Patients may have only small-amplitude twitching movements of the face, hands, or feet or nystagmoid jerking of the eyes.^{11,12} Some patients have no observable, repetitive motor activity, and the detection of ongoing seizures requires electroencephalography.¹² Electrographic status epilepticus of this type may be more common in hospitalized, comatose patients than previously thought.¹³ Patients who have electrographic status epilepticus with little or no motor activity (including patients paralyzed for airway management) are still at risk for central nervous system injury and require prompt treatment. Myoclonic status epilepticus, which is usually seen in patients after prolonged anoxia or other severe metabolic insults, consists of very brief, sudden movements of restricted parts of the body that may be triggered by external stimuli, such as mechanical ventilation.

OUTCOMES AND CAUSES OF STATUS EPILEPTICUS

The overall mortality rate among adults with status epilepticus is approximately 20 percent, and patients who have a first episode of status epilepticus are at substantial risk for future episodes and the development of chronic epilepsy.⁵ The outcome is usually worse in patients with status epilepticus of long duration and those who have severe physiologic disturbances. However, the predominant factor affecting outcome is cause. Status epilepticus has many causes, which vary depending on the patient population. It is useful to categorize the causes according to acute and chronic processes, because there are differences between the two in management, response to treatment, and outcome.¹⁴⁻¹⁷

Acute processes that cause status epilepticus include metabolic disturbances (e.g., electrolyte abnor-

From the Departments of Neurology (D.H.L., B.K.A.) and Anatomy (D.H.L.), School of Medicine, and the Department of Clinical Pharmacy, School of Pharmacy (B.K.A.), University of California, San Francisco. Address reprint requests to Dr. Lowenstein at the Department of Neurology, Box 0114, UCSF School of Medicine, 505 Parnassus Ave., San Francisco, CA 94143-0114.

©1998, Massachusetts Medical Society.

malities, renal failure, and sepsis), central nervous system infection, stroke, head trauma, drug toxicity, and hypoxia. Seizures in this category are often difficult to control and are associated with a higher mortality, especially those occurring after hypoxia and in older patients.^{16,17} Myoclonic status epilepticus after hypoxia carries an especially grave prognosis and is often not treated as aggressively as other forms of status epilepticus.¹⁸

Chronic processes that cause status epilepticus include preexisting epilepsy in which status epilepticus is due to breakthrough seizures or the discontinuation of antiepileptic drugs, seizures in the context of chronic ethanol abuse, and remote processes such as central nervous system tumors or strokes that lead to status epilepticus after a latent period that may span weeks to years. In general, patients with status epilepticus due to these chronic processes respond well to anticonvulsant treatment, and they recover from the acute episode of seizures.

PATHOPHYSIOLOGY

The fundamental pathophysiology of status epilepticus involves a failure of mechanisms that normally abort an isolated seizure. This failure can arise from abnormally persistent, excessive excitation or ineffective recruitment of inhibition. The relative contributions of these factors are poorly understood. The temporal and spatial determinants of status epilepticus are also relatively unknown; experimental studies suggest there is induction of reverberating seizure activity between, for example, hippocampal and parahippocampal structures and that the seizures progress through a sequence of distinct electrographic changes.^{19,20}

It is likely that numerous mechanisms are involved, depending on the underlying cause. Our best insights come from cases in which status epilepticus was caused by an exogenous toxin. The most notable example involved the ingestion in 1987 of mussels contaminated with domoic acid, an analogue of glutamate (the principal excitatory amino acid neurotransmitter in the brain).²¹ Some patients had prolonged and profound status epilepticus.²² This occurrence suggests that excessive activation of excitatory amino acid receptors can cause prolonged seizures and suggests that excitatory amino acids have a causative role in status epilepticus.²³ Status epilepticus can also be caused by penicillin and related compounds that antagonize the effects of γ -aminobutyric acid (GABA), the main inhibitory neurotransmitter of the brain.¹⁹ Very recent studies suggest that the failure of inhibition may be due in some cases to a shift in the functional properties of the GABA_A receptor that occurs as seizures become prolonged.²⁴

Status epilepticus lasting approximately 30 to 45 minutes can cause cerebral injury, especially in limbic structures such as the hippocampus, and seizure

activity itself is sufficient to damage the central nervous system.^{25,26} This damage is partly a consequence of glutamate-mediated excitotoxicity and does not appear to be due primarily to an excessive metabolic demand imposed by repetitive neuronal firing. The superimposition of systemic stresses such as hyperthermia, hypoxia, or hypotension exacerbates the degree of neuronal injury in animal models of status epilepticus, a finding consistent with empirical observations in humans.^{27,28}

MANAGEMENT

The initial care of a patient with status epilepticus includes standard measures applicable to any acute medical emergency (Fig. 1). A few aspects of management deserve special mention. Proper assessment and control of the airway and of ventilation in a patient with ongoing convulsive seizures can be challenging. Arterial-blood gas monitoring is especially useful. Many patients have a profound metabolic acidosis (e.g., arterial pH <7.0) that corrects itself once seizures are controlled; treatment with sodium bicarbonate should be reserved for the most extreme circumstances.^{14,29} However, arterial-blood gas values may also reveal respiratory acidosis or hypoxia that requires immediate treatment through airway management and supplemental oxygen.

Despite the periods of apnea and cyanosis that occur during the tonic or clonic phases of their seizures, most patients in status epilepticus breathe sufficiently as long as the airway remains clear. Nonetheless, patients should receive 100 percent oxygen by nasal cannula or a nonbreathing mask, and airway patency should be maintained by an oral or nasopharyngeal device while the patient remains unresponsive. Nasal or orotracheal intubation or bag valve-mask ventilation should be undertaken if there is clinical or laboratory evidence of respiratory compromise. If neuromuscular blockade is needed to facilitate intubation, the use of a short-acting drug (e.g., 0.1 mg of vecuronium per kilogram of body weight) will help the physician promptly regain the ability to determine whether seizures are present clinically.

Hyperthermia occurs relatively frequently during status epilepticus (in 28 to 79 percent of patients), and in many cases it is primarily a manifestation of the seizures rather than evidence of an infection.^{14,29} Given the damaging effects of fever in patients with central nervous system injury, hyperthermia should be treated promptly with passive cooling.

Electroencephalographic monitoring should be used for any patient who has received a relatively long acting paralytic agent, remains unconscious after the initial phase of antiepileptic-drug treatment, or requires prolonged therapy for refractory status epilepticus (discussed below). Electroencephalography continues to be underused in such patients. Relatively simple electroencephalographic monitoring devices

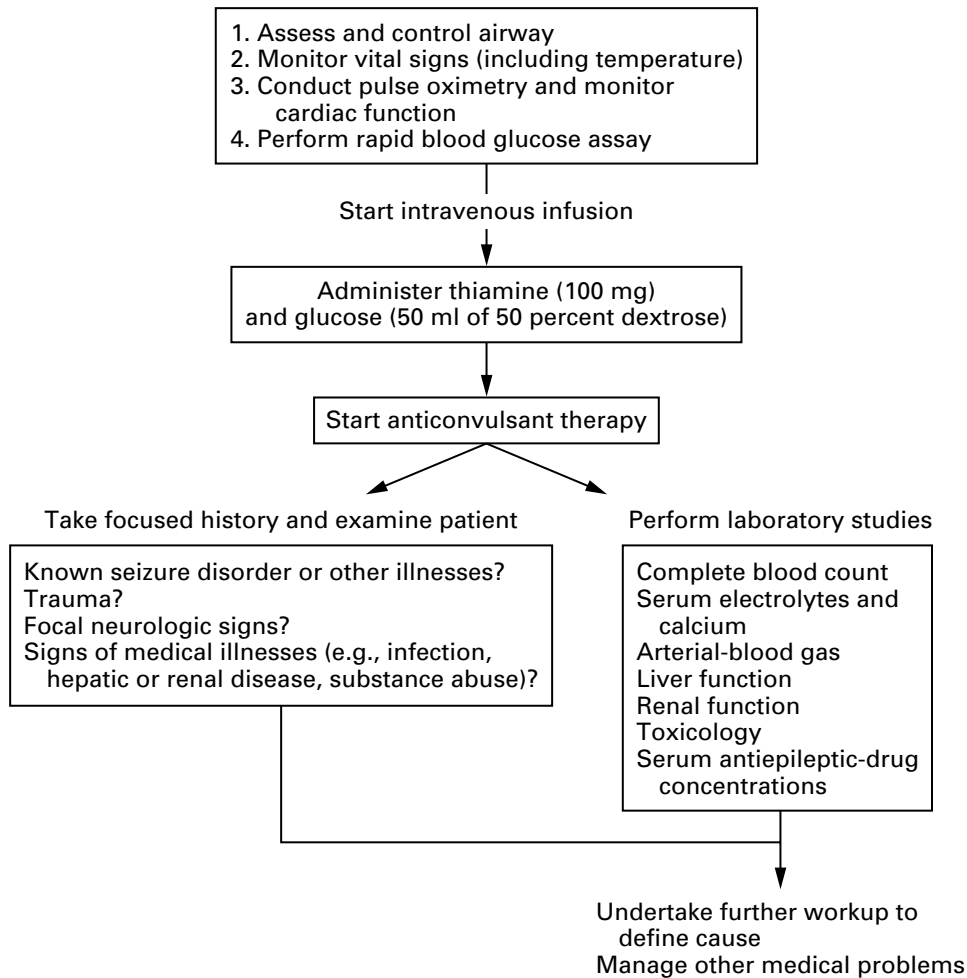


Figure 1. Algorithm for the Initial Management of Status Epilepticus.

are now available and will probably become common in emergency departments and intensive care units.

PRINCIPLES OF DRUG TREATMENT

The goal of treatment for status epilepticus is the prompt cessation of seizure activity. Ideally, a drug used in this setting would be easy to administer, have an immediate and long-lasting antiseizure effect, and be free of serious effects on cardiorespiratory function and the level of consciousness. Unfortunately, all current therapies fall short of this ideal. Benzodiazepines and barbiturates depress consciousness and respiratory drive in a dose-dependent manner, phenytoin and fosphenytoin cause infusion-rate-related hypotension and cardiac dysrhythmias, and limits on the rate of intravenous administration delay the maximal antiseizure effect of phenytoin, fosphenytoin, and phenobarbital.

Drug treatment for status epilepticus should be started without delay after the diagnosis has been established. This approach is supported by the correla-

tion between the duration of status epilepticus and the extent of neurologic morbidity and by experimental and clinical observations that status epilepticus of longer duration is less responsive to drug therapy than that of shorter duration. For example, in a review of status epilepticus in San Francisco in the 1980s, we found that seizures were stopped by first-line therapy (usually diazepam followed by phenytoin) in 80 percent of patients when treatment was begun within 30 minutes of the onset of the seizures.¹⁶ In contrast, the response rate was less than 40 percent when treatment was begun two hours or more after the onset of the seizures. In rats, status epilepticus becomes progressively less responsive to treatment with diazepam as electrographic seizures continue.³⁰

Figure 2 is a suggested algorithm for the treatment of status epilepticus in adults and older children. The choice of drugs and the recommended sequence of administration are based on the rapid onset and extended duration of the effect of lorazepam and the presumed value of an additional long-acting

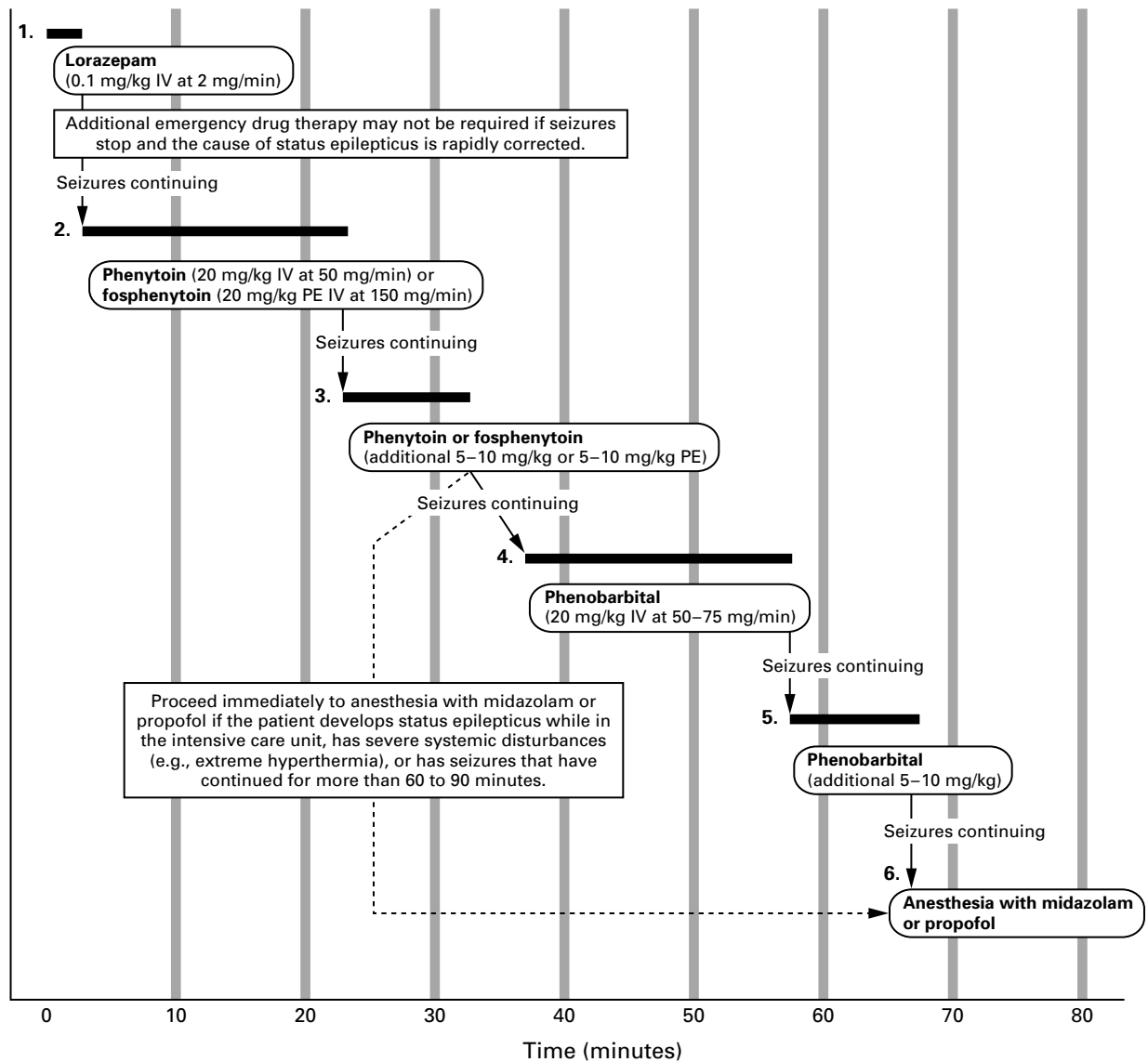


Figure 2. Antiepileptic-Drug Therapy for Status Epilepticus.

IV denotes intravenous, and PE phenytoin equivalents. The horizontal bars indicate the approximate duration of drug infusions.

drug, such as phenytoin or fosphenytoin. In a recent prospective, blinded clinical trial comparing lorazepam alone, phenytoin alone, diazepam with phenytoin, and phenobarbital alone for the treatment of generalized status epilepticus, the treatments were equally effective, except that lorazepam alone was superior to phenytoin alone when seizures were assessed 20 minutes after administration of the drug began.³¹ Lorazepam followed by phenytoin (i.e., the medication sequence shown in Fig. 2) is currently the treatment preferred by many neurologists and epileptologists, but it was not studied in this trial. Nonetheless, the results of the study suggest that

treatment with lorazepam alone may be sufficient and may obviate the need for intravenous phenytoin or fosphenytoin loading when status epilepticus is caused by a rapidly reversible process (e.g., the effects of subtherapeutic antiepileptic-drug concentrations or metabolic derangement).

PHARMACOLOGIC THERAPY

Benzodiazepines

Benzodiazepines (diazepam, lorazepam, midazolam, and clonazepam) are potent, fast-acting antiseizure drugs, and they (particularly diazepam and lorazepam) are therefore preferred as initial therapy.

Their primary pharmacologic actions are probably related to a benzodiazepine-receptor-mediated enhancement of GABAergic transmission. At higher concentrations, benzodiazepines also limit sustained repetitive neuronal firing in a manner similar to that of carbamazepine and phenytoin, and this effect may be relevant to their mechanism of action in status epilepticus.³²

Lorazepam is less lipid-soluble than diazepam, and in animals, brain and cerebrospinal fluid concentrations of lorazepam rise at a slower rate than those of diazepam after intravenous injection.^{33,34} However, a double-blind, randomized comparison of intravenous diazepam (10 to 20 mg) and lorazepam (4 to 8 mg) in patients with status epilepticus found both drugs to be equally fast-acting; the median time to the end of seizures was two minutes for diazepam and three minutes for lorazepam.¹⁵ Both drugs were equally effective in controlling generalized convulsive, absence, and partial status epilepticus (response rates, 79 percent for diazepam and 89 percent for lorazepam). Despite their equivalence as initial therapies, lorazepam has a longer duration of antiseizure effect (12 to 24 hours) than diazepam (15 to 30 minutes), and it is this property that has made lorazepam preferable to diazepam for the treatment of status epilepticus.⁴ Adverse effects of intravenous benzodiazepines include respiratory depression (in 3 to 10 percent of patients), hypotension (in <2 percent), and impaired consciousness (in 20 to 60 percent).^{15,35,36}

Phenytoin and Fosphenytoin

Phenytoin is useful for maintaining a prolonged antiseizure effect after rapid termination of seizures with a benzodiazepine, as an initial therapy for terminating status epilepticus, or when benzodiazepines fail. The recommended starting dose is 20 mg per kilogram administered intravenously at a maximal rate of 50 mg per minute. The common practice of giving a standard loading dose of 1000 mg of phenytoin (14.3 mg per kilogram for a patient weighing 70 kg) provides inadequate therapy for many adults.³⁷ As much as 30 mg per kilogram may be required to stop seizures in some patients.³⁷ This dose may be reduced in patients known to have a serum phenytoin concentration of more than 10 mg per liter at the onset of status epilepticus. However, therapy should not be delayed to measure serum drug concentrations.

Brain concentrations of phenytoin are nearly maximal at the end of an intravenous infusion.³⁸ Thus, it may take 20 to 25 minutes for phenytoin to attain its maximal effect when a typical loading dose is given to an adult.³⁹ When phenytoin is administered at the maximal recommended rate of 50 mg per minute, hypotension occurs in 28 to 50 percent of patients, and cardiac arrhythmias (bradycardia and ectopic beats) occur in 2 percent.^{39,40} These adverse

effects are more common in patients over 50 years old and those with preexisting cardiac disease. Cardiovascular complications of intravenous phenytoin, which are due to the phenytoin itself and to the propylene glycol diluent, can be mitigated by slowing or stopping the infusion.⁴⁰

Fosphenytoin, a new water-soluble prodrug of phenytoin, is converted to phenytoin (half-life, 15 minutes) by nonspecific phosphatases. Doses of fosphenytoin are expressed as phenytoin equivalents, which are the amounts of phenytoin released from the prodrug in the presence of phosphatases. Fosphenytoin can be administered at phenytoin-equivalent rates of up to 150 mg per minute, since it is not formulated with propylene glycol. Therapeutic serum concentrations of phenytoin (≥ 1 mg per liter unbound) are attained within 10 minutes when fosphenytoin or phenytoin is administered at maximal infusion rates. Thus, fosphenytoin and phenytoin are likely to have a similar time to the onset of an effect in controlling status epilepticus.⁴¹ No clinically significant differences between the hypotensive or adverse cardiac effects of phenytoin loading and those of fosphenytoin loading have been reported, although infusion-site reactions (phlebitis and soft-tissue damage) are less common with fosphenytoin.

Phenobarbital

In a small, randomized study, phenobarbital was as effective as the combination of diazepam and phenytoin for the treatment of status epilepticus.⁴² However, the depressant effects of phenobarbital on respiratory drive, level of consciousness, and blood pressure may complicate management, especially when phenobarbital is administered after a benzodiazepine.⁴³ For these reasons, phenobarbital (20 mg per kilogram at a rate of 50 to 75 mg per minute) is recommended only when benzodiazepines and phenytoin fail. Respiratory and blood-pressure support must be immediately available.

Other Therapies

Intravenous valproic acid, recently marketed in the United States as an alternative to oral therapy, appears to stop some types of status epilepticus.⁴⁴ However, further experience is needed before this therapy can be recommended. Lidocaine, chlor-methiazole (outside the United States), and paraldehyde (the availability of which is limited in the United States) have been used successfully to terminate status epilepticus.⁴⁵ Each has substantial toxicity, and they offer little or no advantage over the therapies previously discussed.

Treatment of Refractory Status Epilepticus

Status epilepticus that does not respond to a benzodiazepine, phenytoin, or phenobarbital is considered refractory and requires more aggressive treatment.

Explore Litigation Insights

Docket Alarm provides insights to develop a more informed litigation strategy and the peace of mind of knowing you're on top of things.

Real-Time Litigation Alerts



Keep your litigation team up-to-date with **real-time alerts** and advanced team management tools built for the enterprise, all while greatly reducing PACER spend.

Our comprehensive service means we can handle Federal, State, and Administrative courts across the country.

Advanced Docket Research



With over 230 million records, Docket Alarm's cloud-native docket research platform finds what other services can't. Coverage includes Federal, State, plus PTAB, TTAB, ITC and NLRB decisions, all in one place.

Identify arguments that have been successful in the past with full text, pinpoint searching. Link to case law cited within any court document via Fastcase.

Analytics At Your Fingertips



Learn what happened the last time a particular judge, opposing counsel or company faced cases similar to yours.

Advanced out-of-the-box PTAB and TTAB analytics are always at your fingertips.

API

Docket Alarm offers a powerful API (application programming interface) to developers that want to integrate case filings into their apps.

LAW FIRMS

Build custom dashboards for your attorneys and clients with live data direct from the court.

Automate many repetitive legal tasks like conflict checks, document management, and marketing.

FINANCIAL INSTITUTIONS

Litigation and bankruptcy checks for companies and debtors.

E-DISCOVERY AND LEGAL VENDORS

Sync your system to PACER to automate legal marketing.