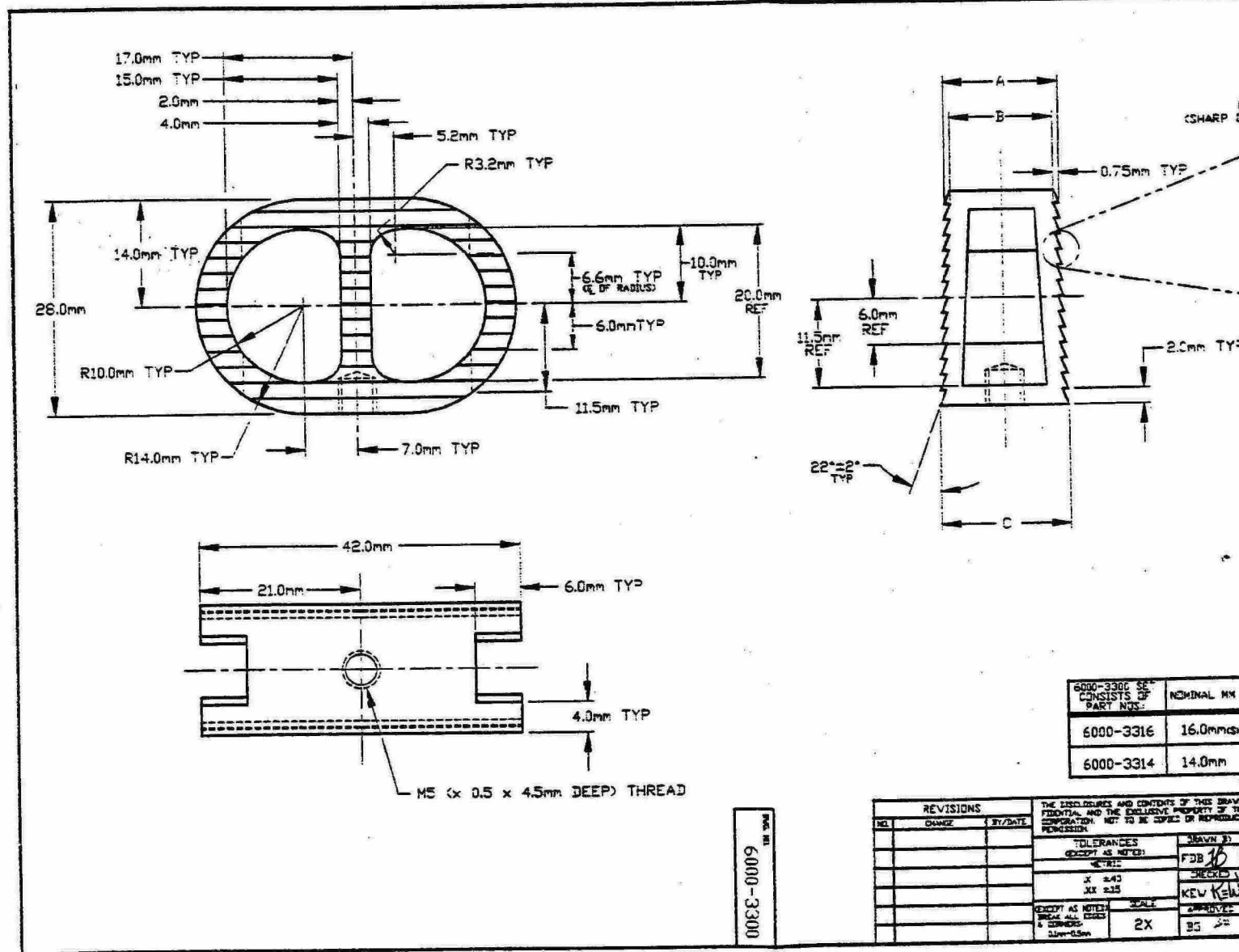


Exhibit 5

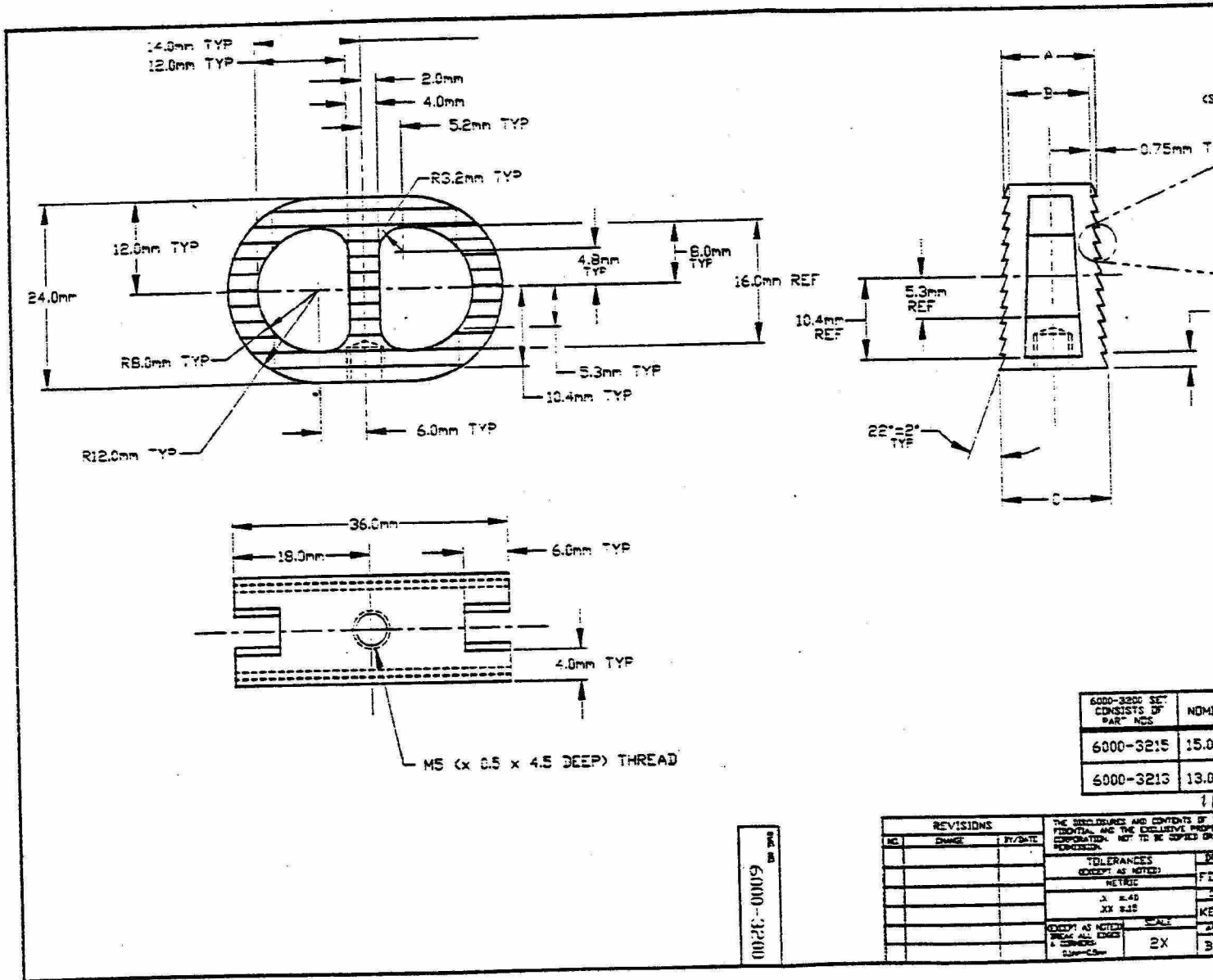
EXHIBIT DTX-5131



6000-3300 SET CONSISTS OF PART NOS.	NOMINAL MM
6000-3316	16.0mm
6000-3314	14.0mm

PART NO.
6000-3300

REVISIONS			THE DISPOSITION AND CONTENTS OF THIS DRAWING, FIGURES, AND THE EXCLUSIVE PROPERTY OF THE CORPORATION. NOT TO BE COPIED OR REPRODUCED WITHOUT PERMISSION.	DRAWN BY FDB JB
NO.	CHANGE	BY/DATE		
			TOLERANCES (EXCEPT AS NOTED)	CHECKED BY KEY
				APPROVED BY KEY
			EXCEPT AS NOTED BREAK ALL CORNERS & EDGES 1:10=0.5mm	SCALE 2X
				DATE 05



6000-3200 SET CONSISTS OF PART NOS	NDMI
6000-3215	15.0
6000-3213	13.0

6000-3200

REVISIONS		
NO.	CHANGE	BY/DATE

THE DIMENSIONS AND CONTENTS OF THIS DRAWING AND THE EXCLUSIVE PROPERTY OF THE DRAWING COMPANY. NOT TO BE COPIED OR REPRODUCED.

TOLERANCES
(UNLESS OTHERWISE SPECIFIED)
METRIC
± 0.40
XX 0.15

EXCEPT AS NOTED FROM ALL DIMENSIONS & DIMENSIONS
2X

