

[54] APPLIANCE CONTROL SYSTEM

[75] Inventors: Richard J. Schwarzbach; Manley S. Keeler, both of Naperville; Randy J. Cavaiani, Hanover Park; Michael K. Chapman, Sycamore, all of Ill.

[73] Assignee: Pittway Corporation, Aurora, Ill.

[21] Appl. No.: 271,244

[22] Filed: Jun. 8, 1981

[51] Int. Cl.<sup>3</sup> ..... H04Q 9/00; G06F 15/20; H04B 3/54

[52] U.S. Cl. .... 340/310 A; 340/825.07; 340/825.22

[58] Field of Search ..... 340/310 A, 825.15, 825.22, 340/309.1, 309.4, 825.06, 825.07, 825.17, 501, 825.52; 307/141; 315/293; 364/104

[56] References Cited

U.S. PATENT DOCUMENTS

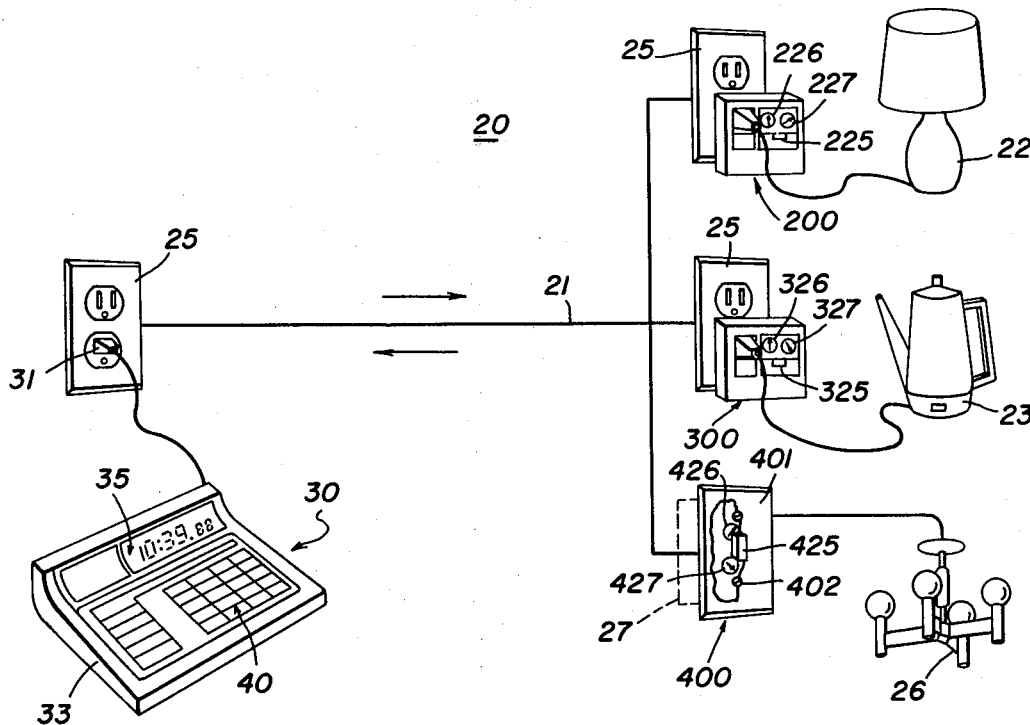
3,691,528	9/1972	Calvagna et al.	340/825.52
3,815,091	6/1974	Kirk	340/825
4,151,515	4/1979	Pease et al.	340/309.1
4,156,866	5/1979	Miller	340/825.06
4,174,517	11/1979	Mandel	340/310 A
4,200,862	4/1980	Campbell et al.	340/310 A
4,217,646	8/1980	Caltagirone et al.	340/310 R
4,279,012	7/1981	Beckedorff et al.	340/825.22
4,308,911	1/1982	Mandl	340/501

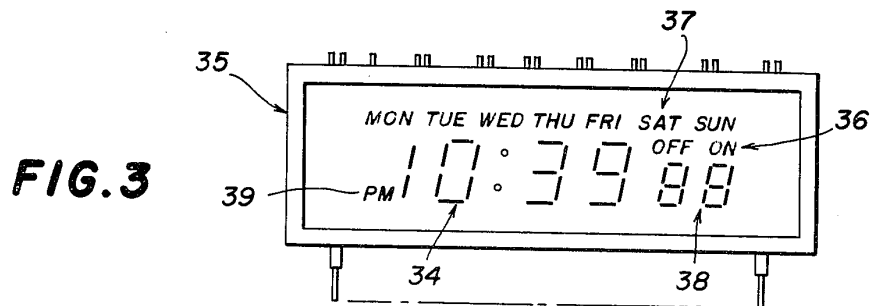
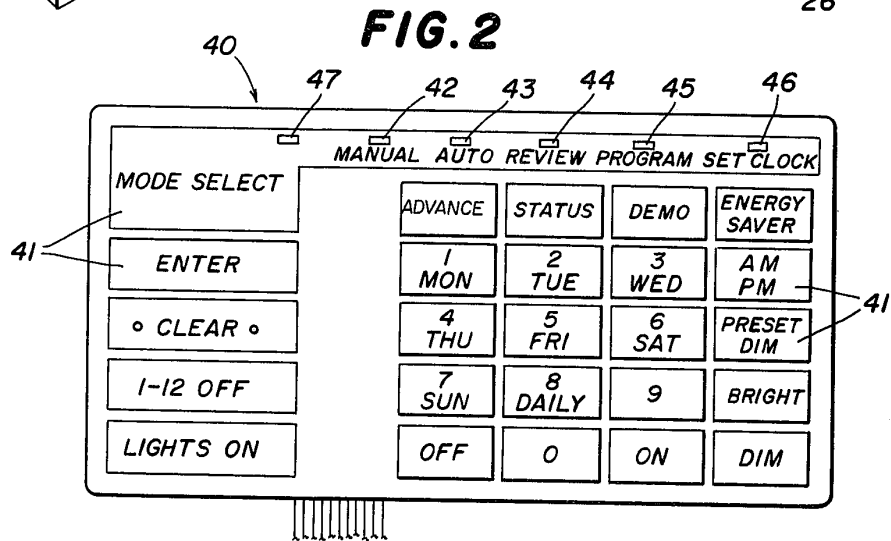
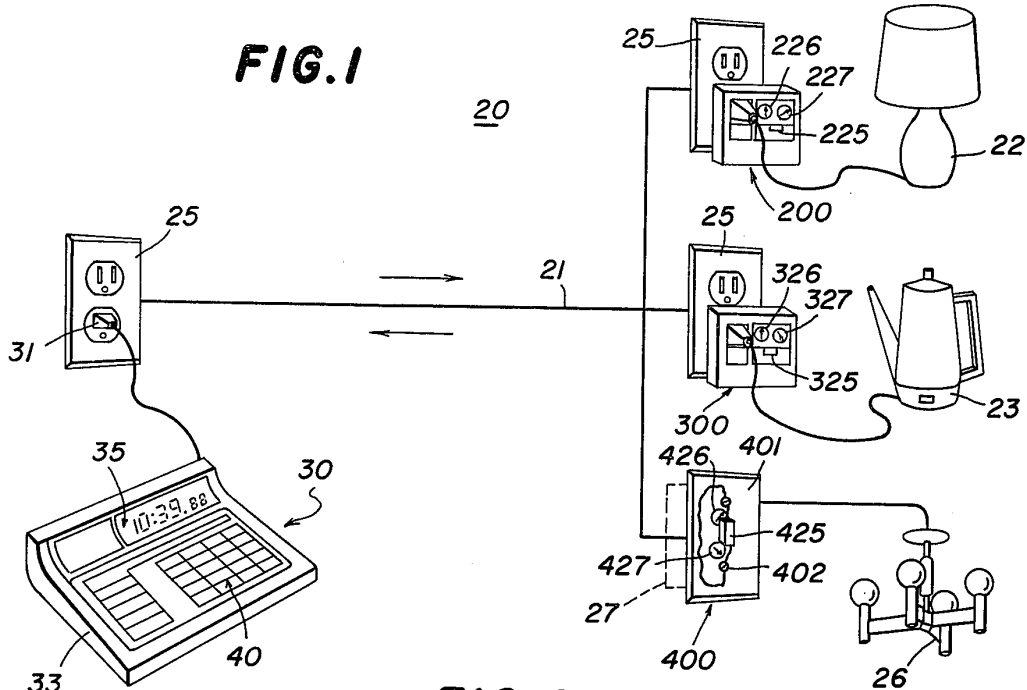
Primary Examiner—Donald J. Yusko  
Attorney, Agent, or Firm—Dithmar, Stotland, Stratman & Levy

[57] ABSTRACT

An appliance control system includes a central control unit and a plurality of slave units each including a user-programmable microprocessor and respectively plugged into outlet sockets of a power main in a building, appliances being respectively coupled to the slave units. The system permits manual or automatic transmission of command signals and status request signals from the central control unit to individually addressed slave units, and transmission of status signals from the slave units to the central control unit. Certain slave units include lamp dimmers which can be operated either remotely from the central control unit or locally at the slave unit, the microprocessors of these slave units being programmable to remember a predetermined brightness level, so that the lamp can be remotely turned on to that predetermined level. Means are provided for turning the appliance off at the remote appliance site while maintaining the appliance under the control of the central control unit. Means are also provided for reviewing and testing a pre-programmed schedule of command instructions.

33 Claims, 20 Drawing Figures





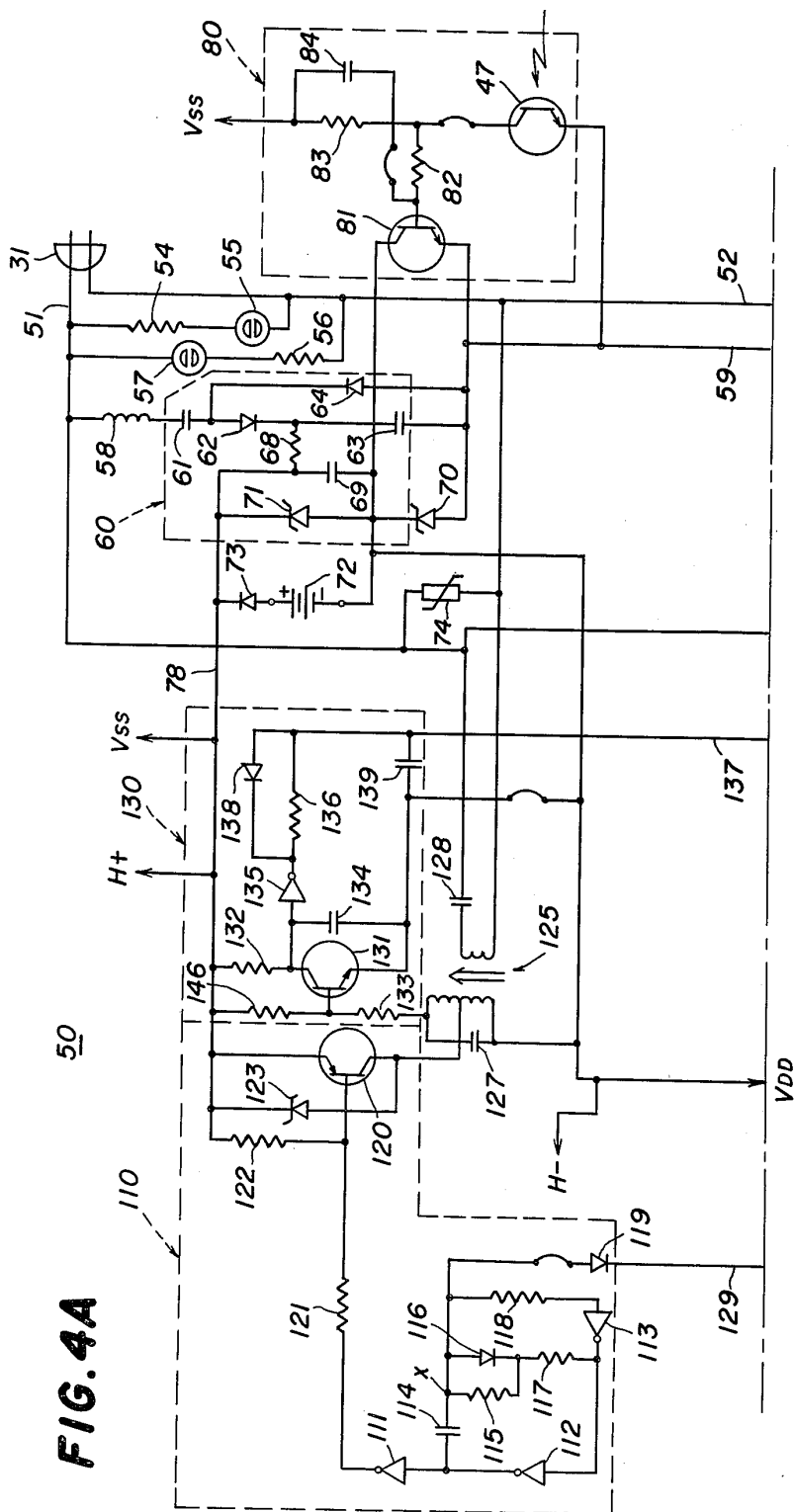
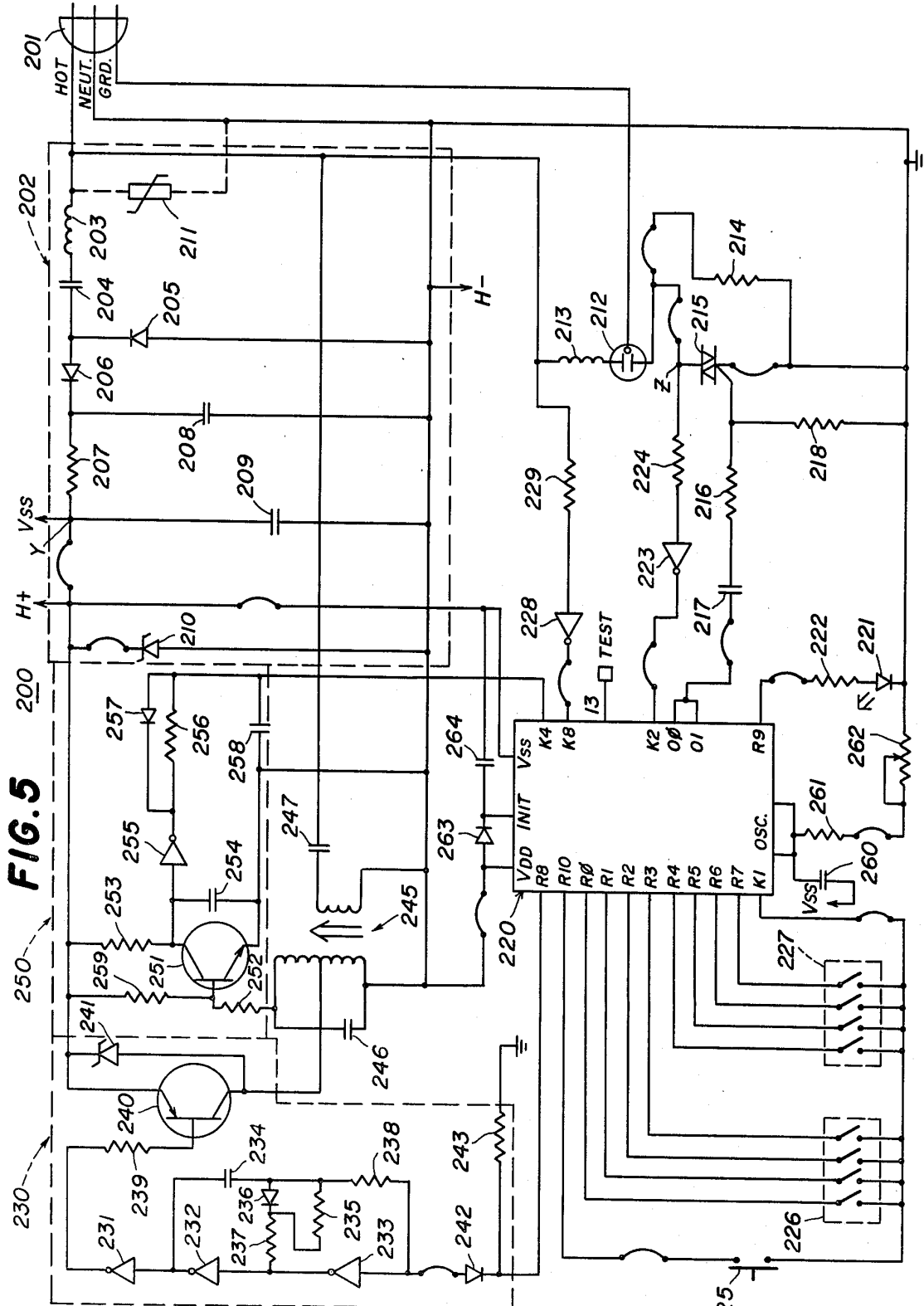


FIG. 4A





# Explore Litigation Insights

Docket Alarm provides insights to develop a more informed litigation strategy and the peace of mind of knowing you're on top of things.

## Real-Time Litigation Alerts



Keep your litigation team up-to-date with **real-time alerts** and advanced team management tools built for the enterprise, all while greatly reducing PACER spend.

Our comprehensive service means we can handle Federal, State, and Administrative courts across the country.

## Advanced Docket Research



With over 230 million records, Docket Alarm's cloud-native docket research platform finds what other services can't. Coverage includes Federal, State, plus PTAB, TTAB, ITC and NLRB decisions, all in one place.

Identify arguments that have been successful in the past with full text, pinpoint searching. Link to case law cited within any court document via Fastcase.

## Analytics At Your Fingertips



Learn what happened the last time a particular judge, opposing counsel or company faced cases similar to yours.

Advanced out-of-the-box PTAB and TTAB analytics are always at your fingertips.

## API

Docket Alarm offers a powerful API (application programming interface) to developers that want to integrate case filings into their apps.

## LAW FIRMS

Build custom dashboards for your attorneys and clients with live data direct from the court.

Automate many repetitive legal tasks like conflict checks, document management, and marketing.

## FINANCIAL INSTITUTIONS

Litigation and bankruptcy checks for companies and debtors.

## E-DISCOVERY AND LEGAL VENDORS

Sync your system to PACER to automate legal marketing.