

[54] SINGLE-ELECTRODE CAPACITANCE TOUCHPAD SENSOR SYSTEMS

[75] Inventor: Wesley K. Waldron, Scotia, N.Y.

[73] Assignee: General Electric Company, Schenectady, N.Y.

[21] Appl. No.: 952,705

[22] Filed: Oct. 19, 1978

[51] Int. Cl.³ H03K 3/26; G08B 13/26

[52] U.S. Cl. 328/5; 307/116; 307/308; 340/562

[58] Field of Search 328/5; 307/308, 116; 331/65; 340/552, 365 C; 202/DIG. 1

[56] References Cited

U.S. PATENT DOCUMENTS

3,846,780	11/1974	Gilcher	340/562
3,846,791	11/1974	Foster	307/308
3,893,035	7/1975	Higgins	307/307
4,016,490	4/1977	Weckenmann et al.	200/DIG. 1
4,107,555	8/1978	Haas et al.	328/5
4,136,291	1/1979	Waldron	307/308

OTHER PUBLICATIONS

IBM Tech. Discr. Blttn., Touch-Sensing Circuit, J. A. Williams vol. 17, No. 1, 6/74 pp. 166 & 167.

Primary Examiner—Stanley D. Miller, Jr.

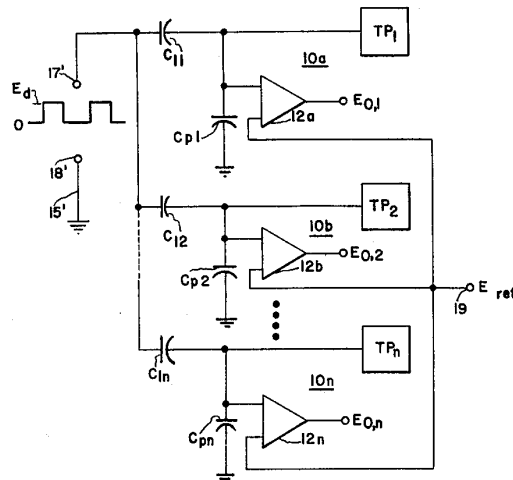
Assistant Examiner—B. P. Davis

Attorney, Agent, or Firm—Geoffrey H. Krauss; Marvin Snyder; James C. Davis

[57] ABSTRACT

Each of an array of capacitive touchpad sensors has a single touchpad electrode fabricated upon a substrate and accessible to user personnel, with series coupling and shunt capacitance being provided respectively between a driving generator and the touchpad electrode, and the touchpad electrode and an array ground. Each capacitive touchpad sensor operates with a sense amplifier to provide a high density sensor array requiring relatively low driving voltage amplitudes and may be utilized with driven shields and a normalization network to provide reliable capacitance sensing with reduced sensitivity to contamination of the surface of the sensor array.

20 Claims, 8 Drawing Figures



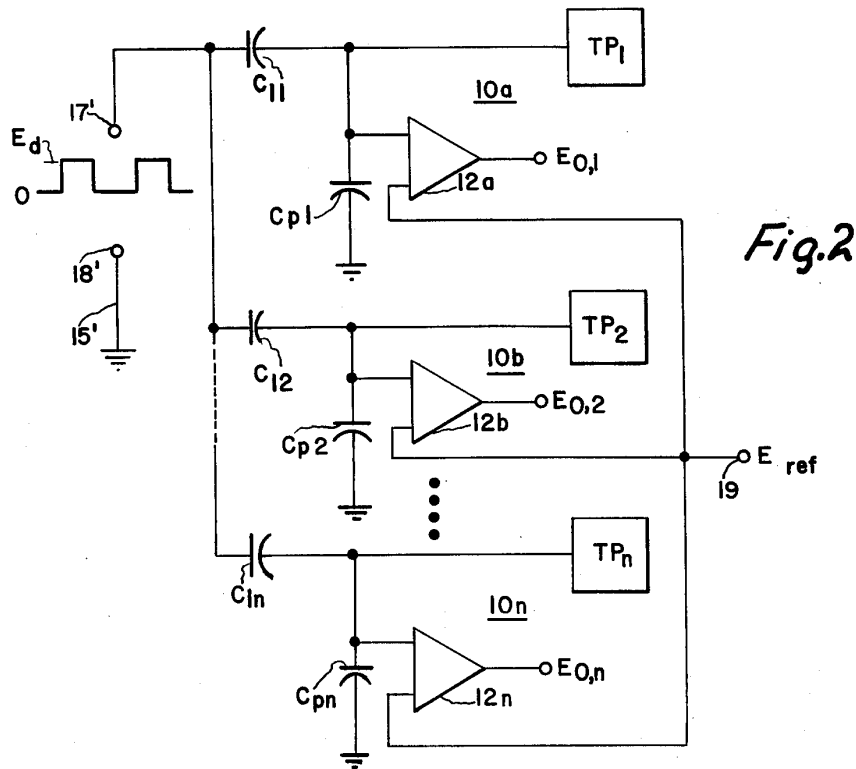
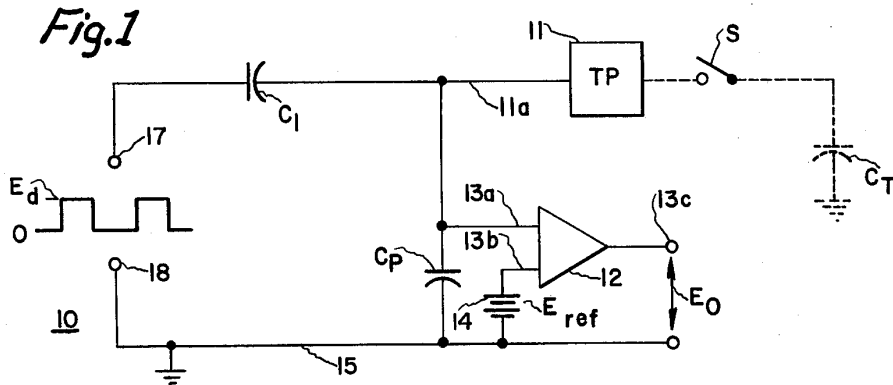


Fig. 3

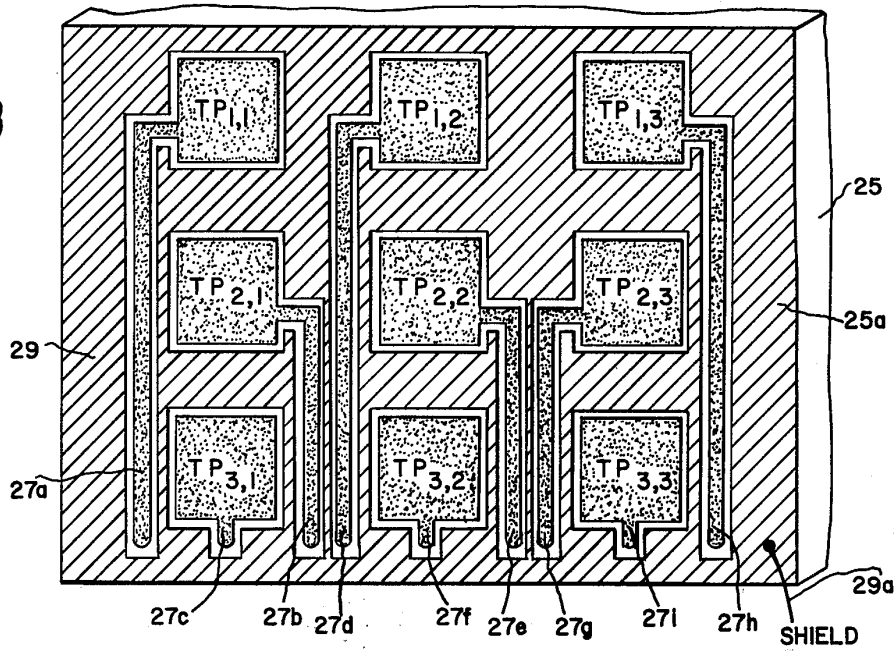


Fig. 4

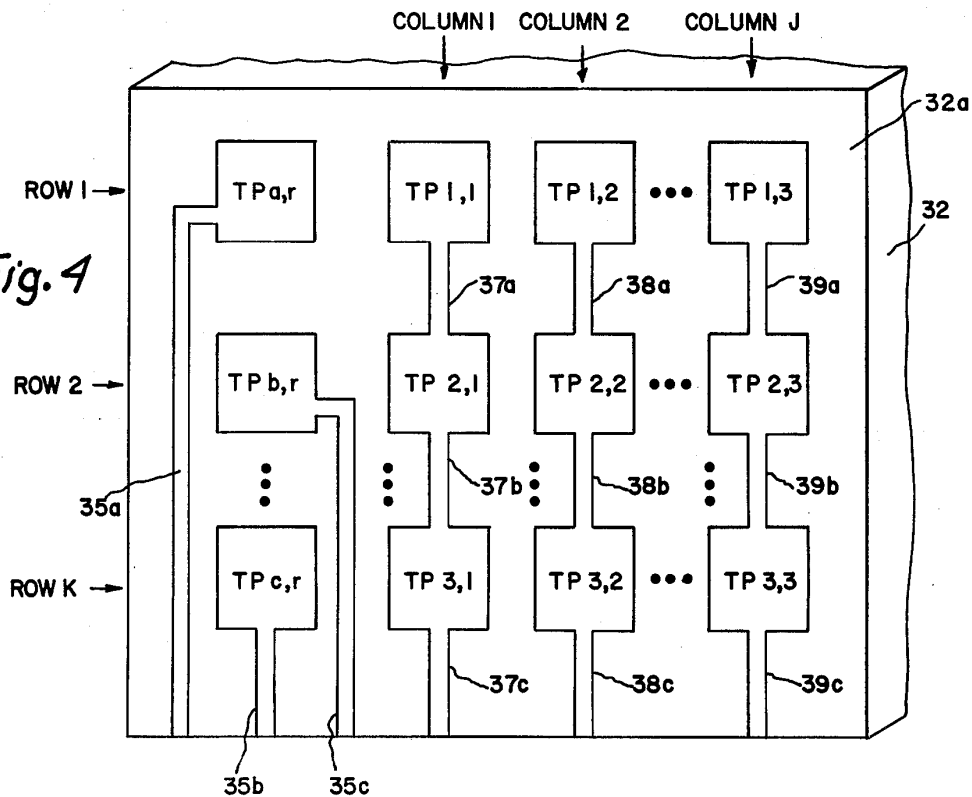
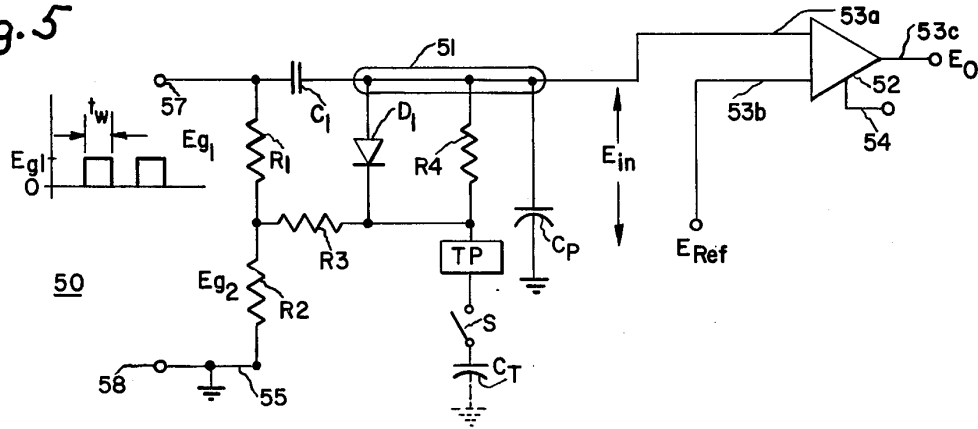
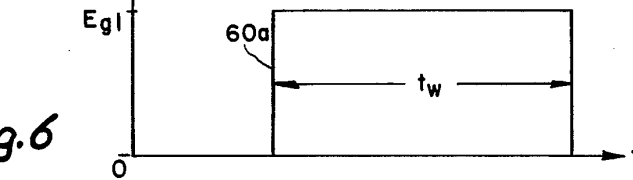


Fig. 5



WAVEFORM A

Fig. 6



WAVEFORM B

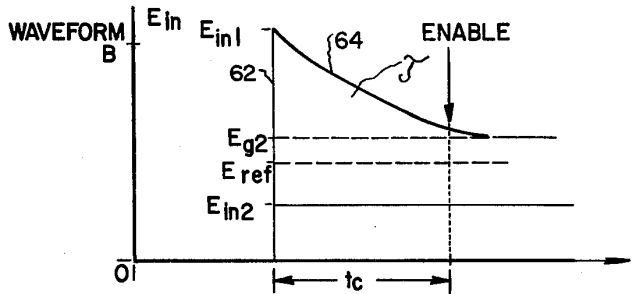


Fig. 7

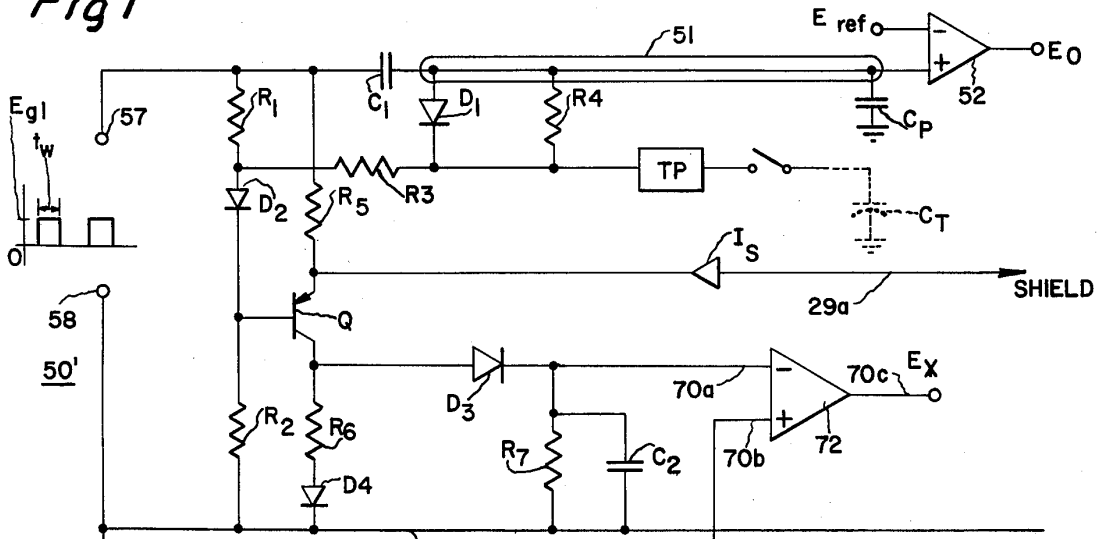
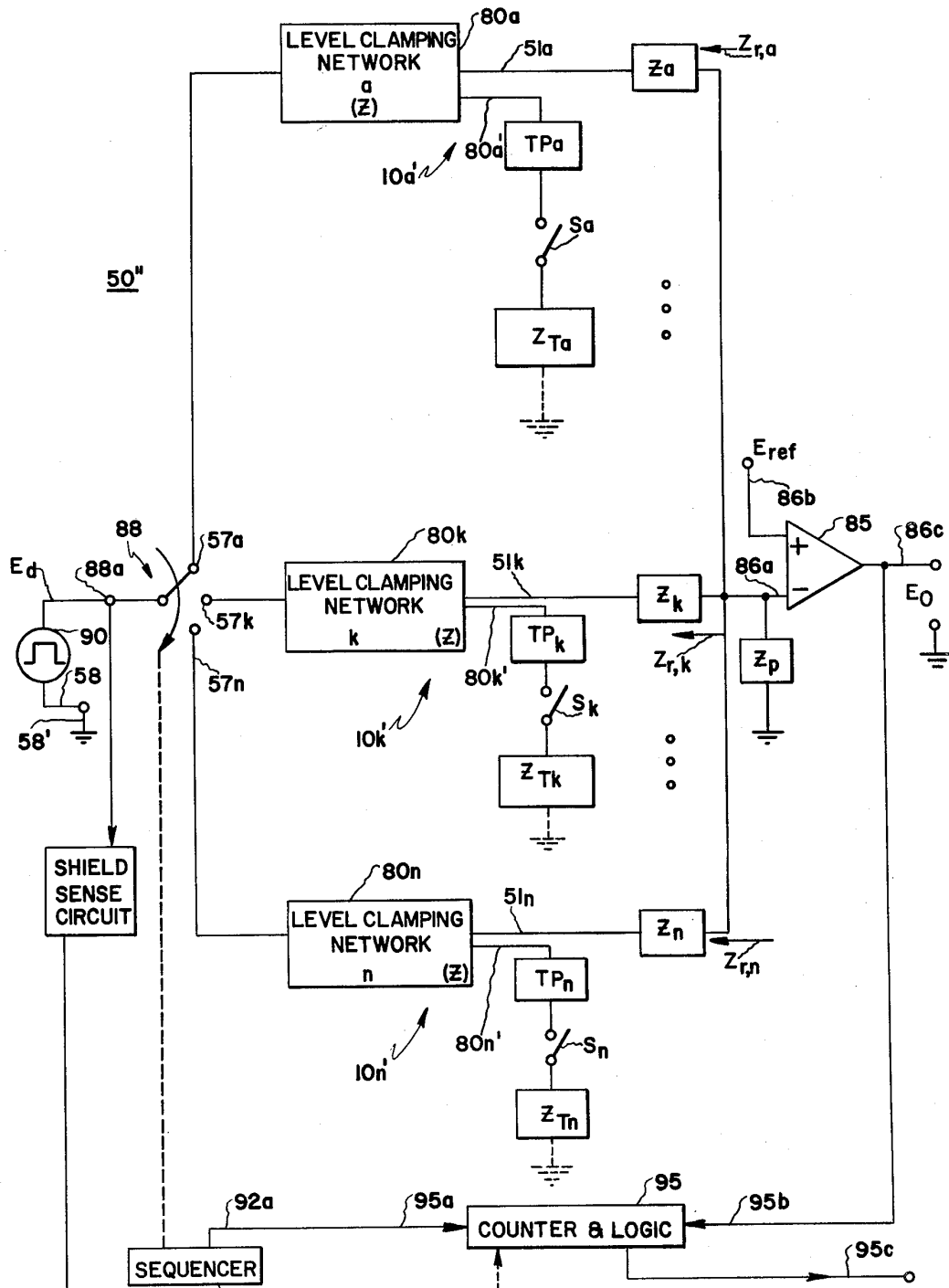


Fig. 8



Explore Litigation Insights

Docket Alarm provides insights to develop a more informed litigation strategy and the peace of mind of knowing you're on top of things.

Real-Time Litigation Alerts



Keep your litigation team up-to-date with **real-time alerts** and advanced team management tools built for the enterprise, all while greatly reducing PACER spend.

Our comprehensive service means we can handle Federal, State, and Administrative courts across the country.

Advanced Docket Research



With over 230 million records, Docket Alarm's cloud-native docket research platform finds what other services can't. Coverage includes Federal, State, plus PTAB, TTAB, ITC and NLRB decisions, all in one place.

Identify arguments that have been successful in the past with full text, pinpoint searching. Link to case law cited within any court document via Fastcase.

Analytics At Your Fingertips



Learn what happened the last time a particular judge, opposing counsel or company faced cases similar to yours.

Advanced out-of-the-box PTAB and TTAB analytics are always at your fingertips.

API

Docket Alarm offers a powerful API (application programming interface) to developers that want to integrate case filings into their apps.

LAW FIRMS

Build custom dashboards for your attorneys and clients with live data direct from the court.

Automate many repetitive legal tasks like conflict checks, document management, and marketing.

FINANCIAL INSTITUTIONS

Litigation and bankruptcy checks for companies and debtors.

E-DISCOVERY AND LEGAL VENDORS

Sync your system to PACER to automate legal marketing.