

[54] CAPACITIVE TOUCH SWITCH ARRANGEMENT

[75] Inventor: Norman H. Chiu, Louisville, Ky.

[73] Assignee: General Electric Company, Louisville, Ky.

[21] Appl. No.: 412,737

[22] Filed: Aug. 30, 1982

[51] Int. Cl.⁴ G08C 9/00

[52] U.S. Cl. 340/365 C; 200/5 A; 200/DIG. 1; 340/365 R

[58] Field of Search 340/365 C, 365 E, 365 R, 340/365 S, 365 A; 400/479.1; 200/DIG. 1, 5 A; 179/90 K; 219/10.77

4,237,421 12/1980 Waldron 340/365 C

4,288,786 9/1981 Ledniczki 340/365 C

4,290,061 9/1981 Serrano 340/712

4,394,643 7/1983 Williams 340/365 C

4,398,181 8/1983 Yamamoto 340/365 C

4,413,252 11/1983 Tyler 340/365 C

4,415,781 11/1983 Frame 340/365 C

4,441,097 4/1984 Anderson 340/365 A

4,446,350 5/1984 Mizukawa 340/365 E

Primary Examiner—John W. Caldwell, Sr.
 Assistant Examiner—Michael F. Heim
 Attorney, Agent, or Firm—H. Neil Houser; Radford M. Reams

[56] References Cited
 U.S. PATENT DOCUMENTS

3,482,241	12/1969	Johnson	340/365 C
3,653,038	3/1972	Webb	340/365 C
3,668,417	6/1972	Sessler	340/365 C
3,691,555	9/1972	Looschen	340/365
3,750,149	7/1973	Sessler	340/365 C
3,786,495	1/1974	Spence	340/365 C
3,846,791	11/1974	Foster	340/365 C
3,971,013	7/1976	Challoner et al.	340/337
4,027,306	5/1977	Hackmeister	340/365 C
4,053,789	10/1977	Schultz	307/116
4,125,783	11/1978	Sifton	307/116
4,136,291	1/1979	Waldron	307/308
4,145,748	3/1979	Eichelberger et al.	364/862
4,157,539	6/1979	Hunts et al.	340/365 C
4,221,975	9/1980	Ledniczki	340/365 C
4,233,522	11/1980	Grummer et al.	307/116

[57] ABSTRACT

A capacitive attenuator type touch switch cell arrangement employs a touch responsive pad or electrode and a receiver electrode of comparable surface area on opposing surfaces of a dielectric substrate for capacitive coupling therebetween, which capacitive coupling is alterable by the human touching of or proximate to the touch pad. A scan signal is coupled from signal generating circuitry to the touch responsive pad by a separate transmitting capacitor. Signal detection circuitry senses the signal coupled to the receiver electrode to detect attenuation of the coupled signal signifying the touching of the touch pad. The use of a separate capacitor to provide the transmitting capacitance reduces the touch pad area requirement, thereby permitting closer spacing of touch switch cells for greater switch density on a control panel.

10 Claims, 15 Drawing Figures

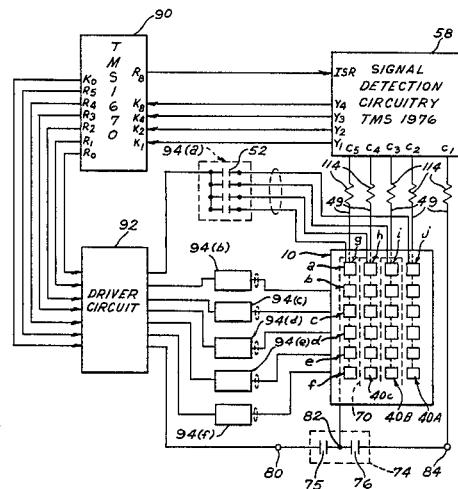


FIG. 1

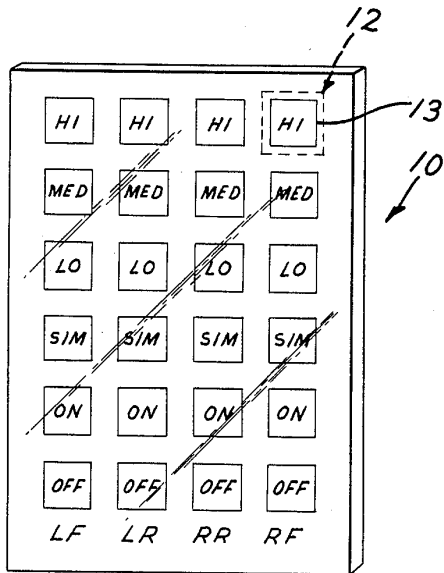


FIG. 9

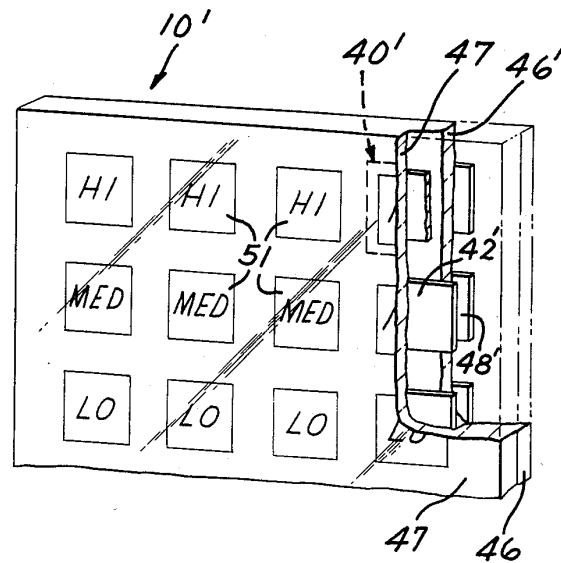
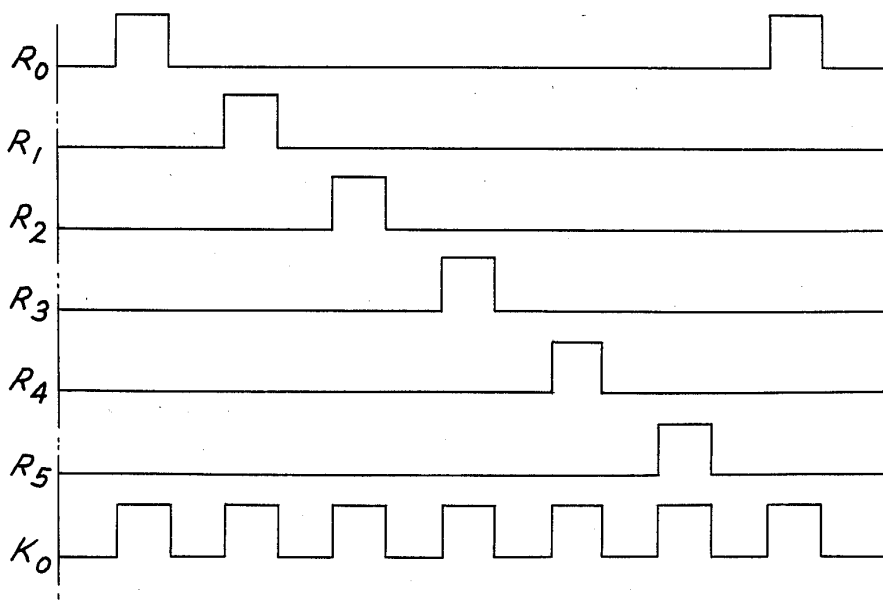
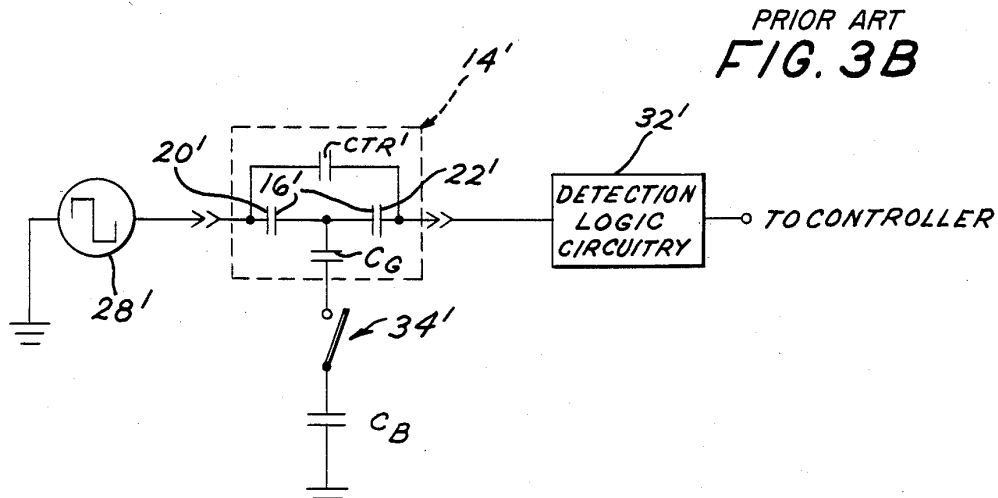
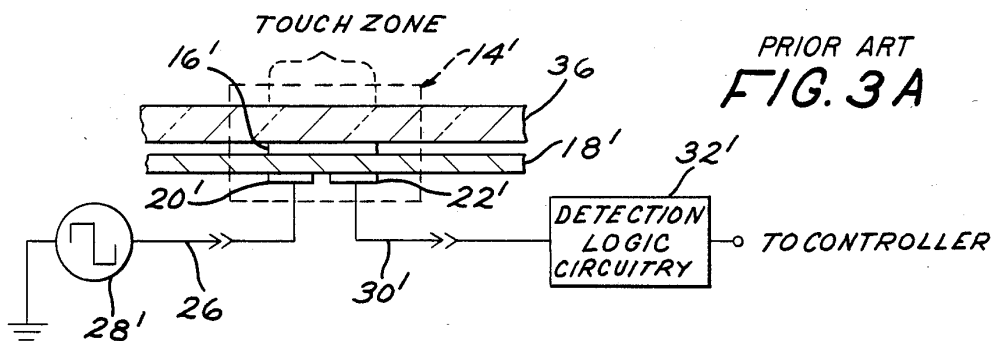
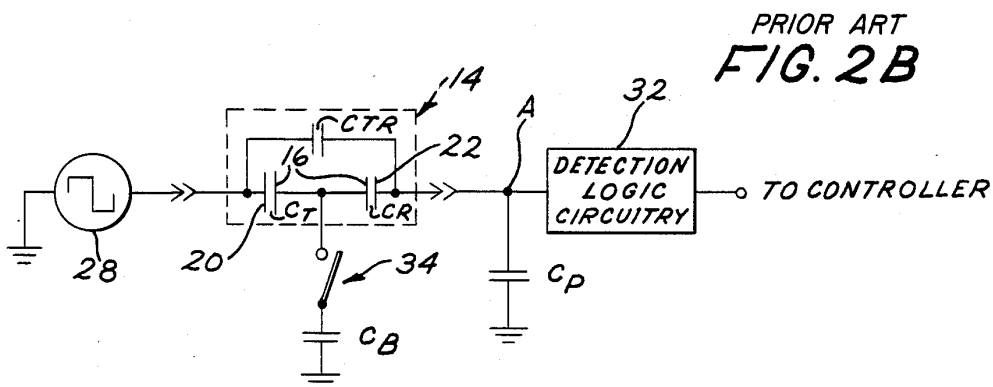
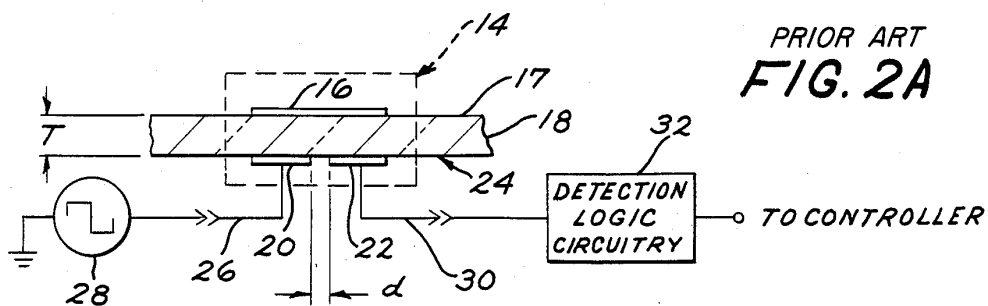


FIG. 7





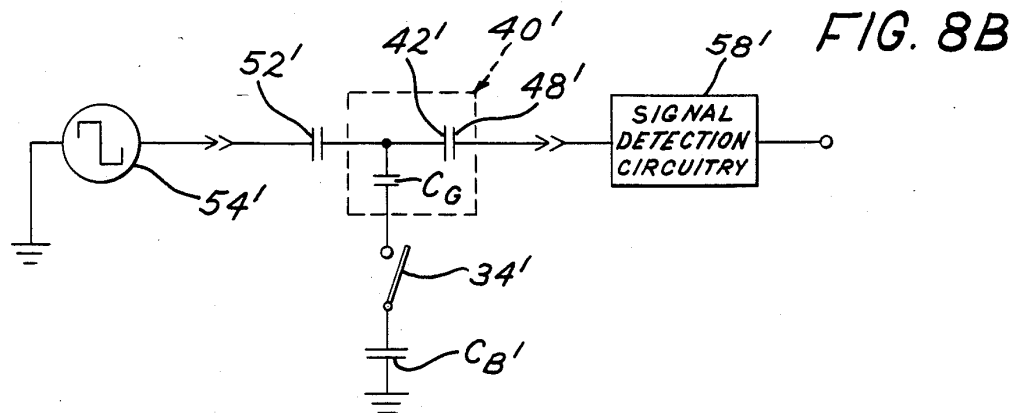
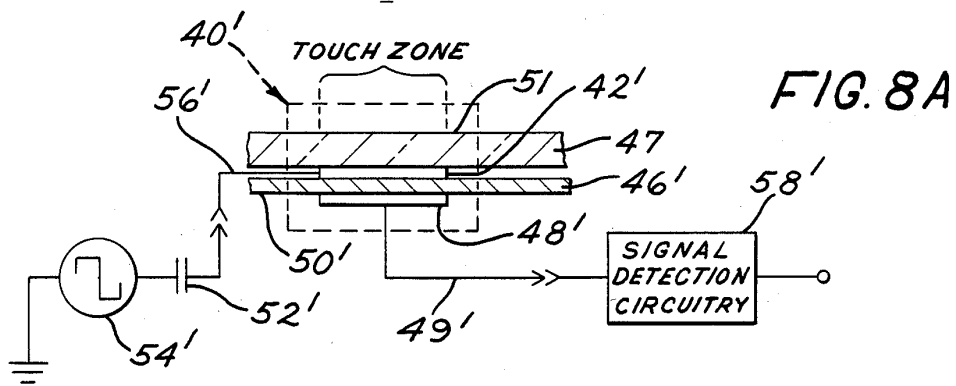
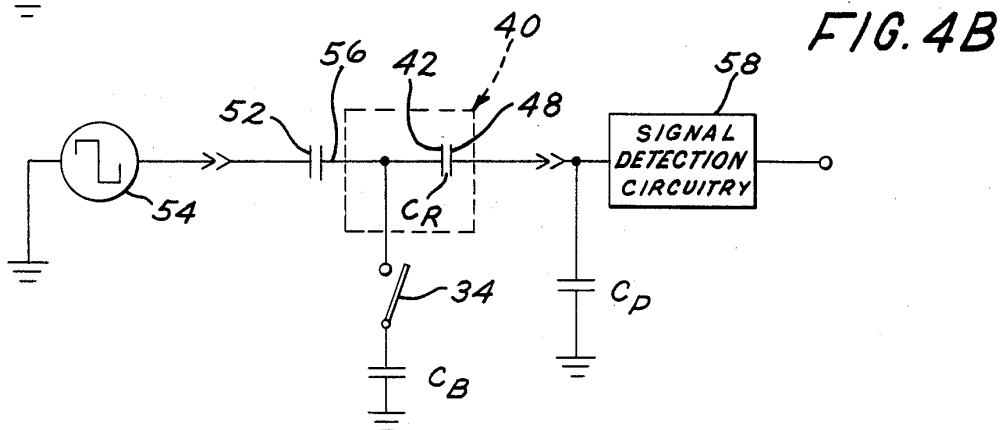
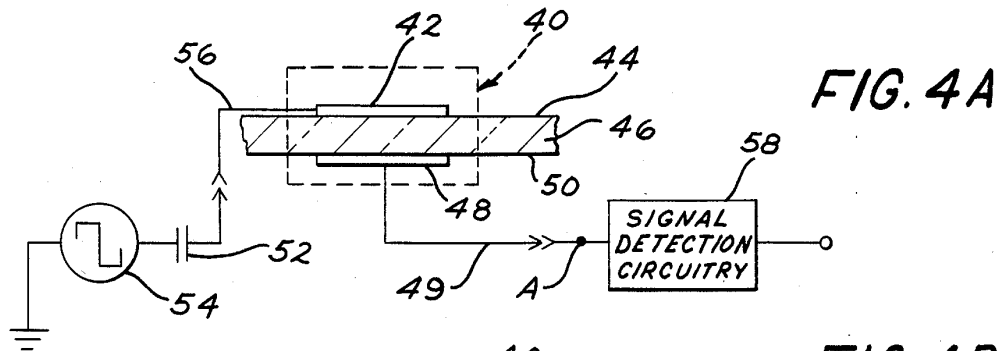


FIG. 5A

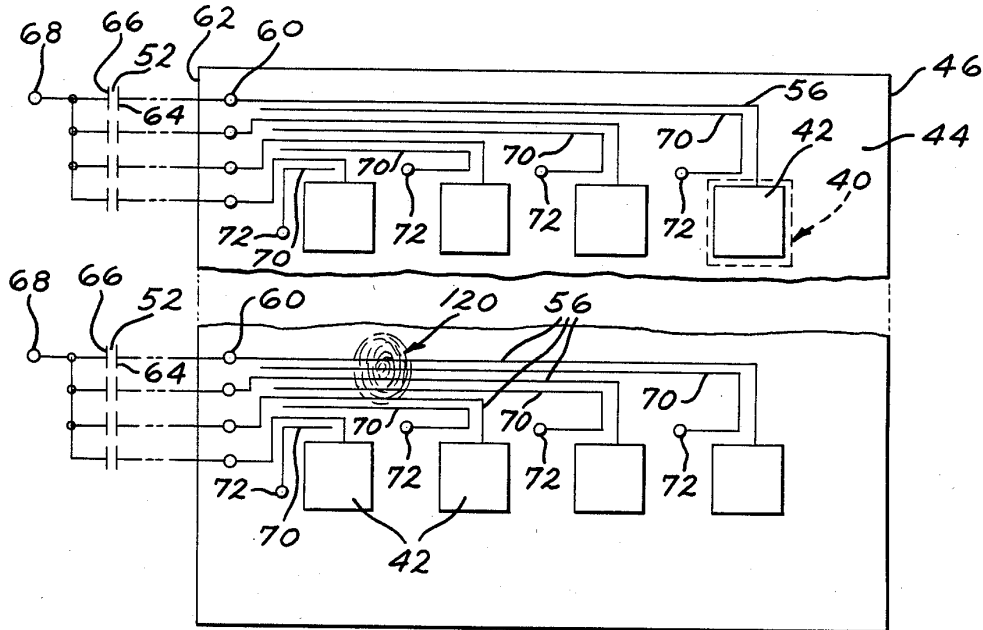
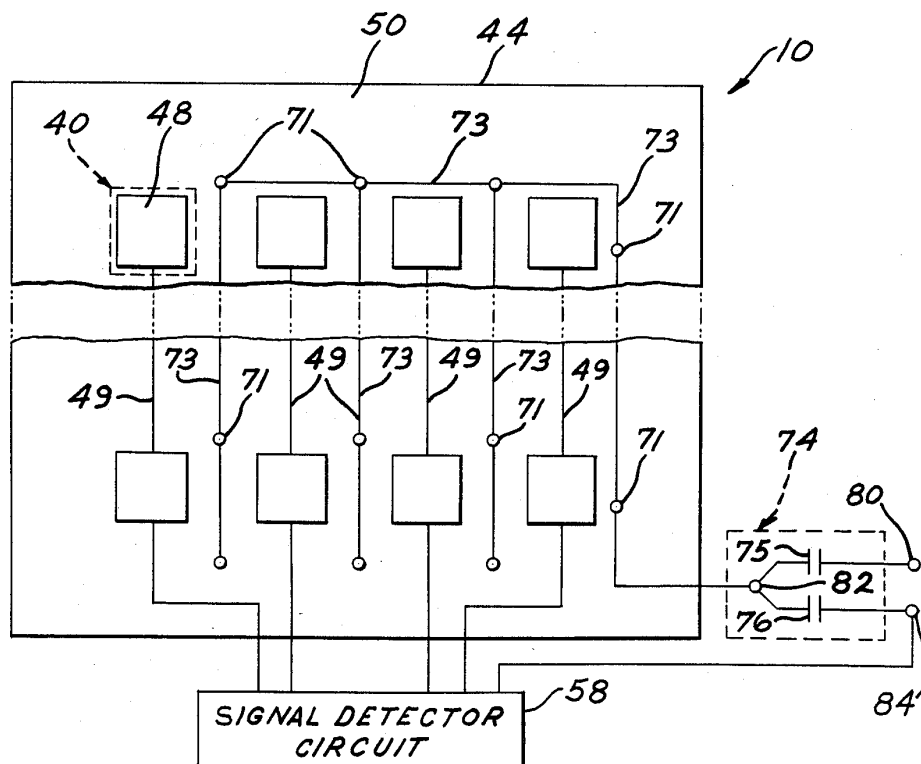


FIG. 5B



Explore Litigation Insights

Docket Alarm provides insights to develop a more informed litigation strategy and the peace of mind of knowing you're on top of things.

Real-Time Litigation Alerts



Keep your litigation team up-to-date with **real-time alerts** and advanced team management tools built for the enterprise, all while greatly reducing PACER spend.

Our comprehensive service means we can handle Federal, State, and Administrative courts across the country.

Advanced Docket Research



With over 230 million records, Docket Alarm's cloud-native docket research platform finds what other services can't. Coverage includes Federal, State, plus PTAB, TTAB, ITC and NLRB decisions, all in one place.

Identify arguments that have been successful in the past with full text, pinpoint searching. Link to case law cited within any court document via Fastcase.

Analytics At Your Fingertips



Learn what happened the last time a particular judge, opposing counsel or company faced cases similar to yours.

Advanced out-of-the-box PTAB and TTAB analytics are always at your fingertips.

API

Docket Alarm offers a powerful API (application programming interface) to developers that want to integrate case filings into their apps.

LAW FIRMS

Build custom dashboards for your attorneys and clients with live data direct from the court.

Automate many repetitive legal tasks like conflict checks, document management, and marketing.

FINANCIAL INSTITUTIONS

Litigation and bankruptcy checks for companies and debtors.

E-DISCOVERY AND LEGAL VENDORS

Sync your system to PACER to automate legal marketing.